



WINPOL
Interreg Europe



European Union
European Regional
Development Fund

Treatment of biodegradable waste in Mehedinti County

Drobeta Turnu Severin City Hall & Mehedinti County Council

19th November 2019

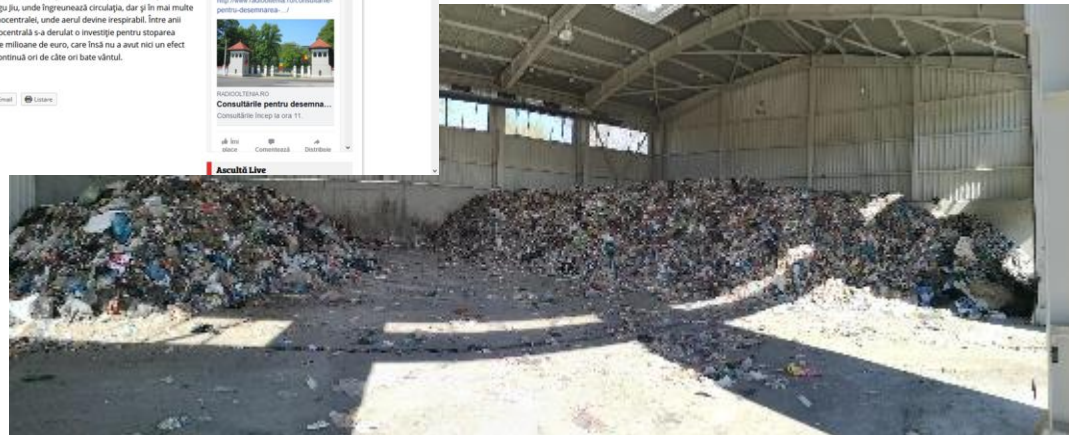
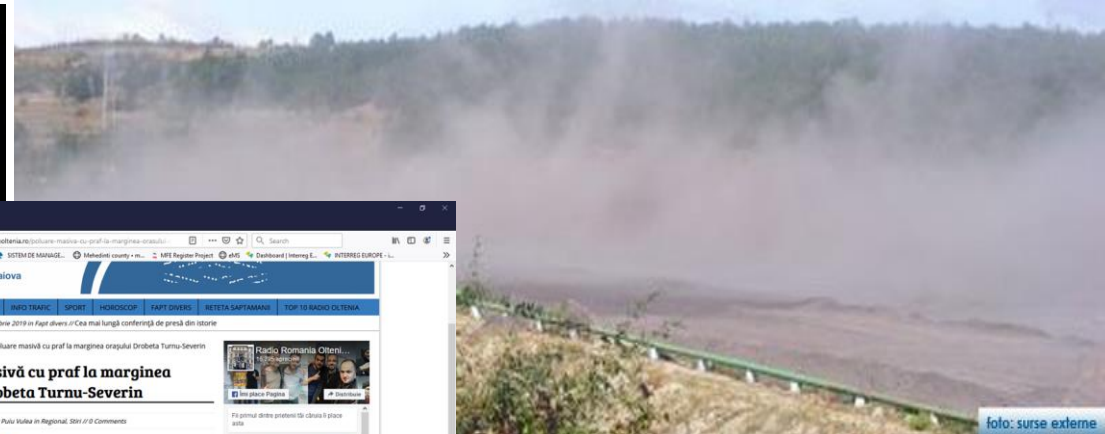
Thematic Seminar 2

“Innovative Models for Waste Collection, Prevention and Recycling”

Description:

Problem addressed:

- Significant quantities of waste are taken to landfill
- The existence of an ash and slag deposit of a closed power plant - a frequent polluter in the area.



Description:

- Context where the practice was introduced

Mehedinți County Council implemented the project “Integrated Solid Waste Management System in Mehedinți County”, a project aimed to resolve the significant environmental and operational problems related to waste generation and management and develop of integrated waste management system in the County.

One of the most important activity was the treatment of biodegradable waste, so that the storage in the landfill to be less and less.

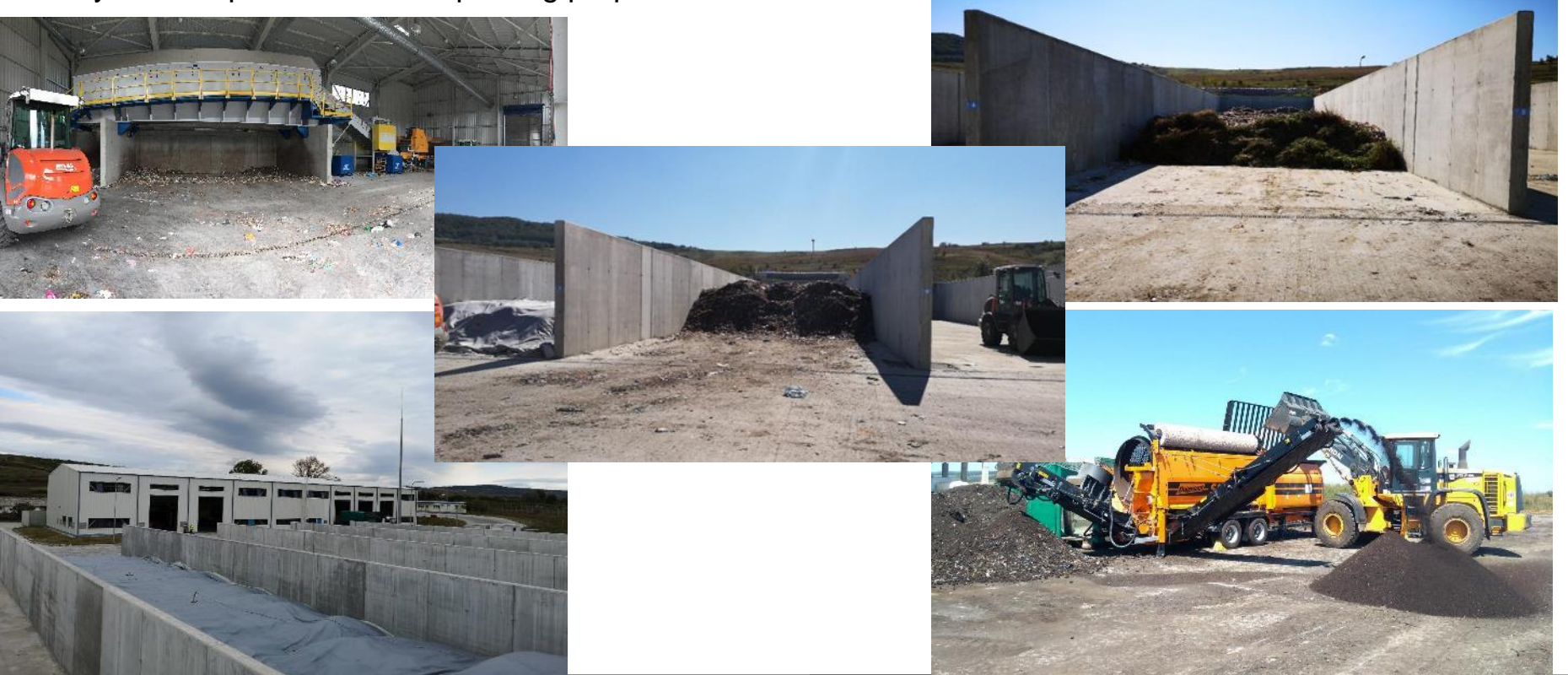


Description:

Thus, we developed a simple MBT / biostabilization plant for biodegradable fraction of waste including market and garden waste near Drobeta Turnu Severin with a capacity of 54.843 tn/y. The treatment includes mechanical pre-treatment (shredding, recovery of ferrous metals and screening), biostabilization of the humid fraction, refining and maturation.

After a mechanical pre-treatment and biostabilization the humid fraction lost about 25% of the incoming mass resulting a low quality compost called CLO (Compost Like Output).

It is expected that in the beginning, the impurities are expected to be high, but gradually, since the public participation will be improved, the quality of produced compost like output will be also improved, and it may be acceptable for soil improving purposes.



Description:

- Objective:
 - Decreasing storage in the landfill
 - Covering the existing ash and slag deposit of closed power plant with CLO



Implementation:

- Timescale:
22.08.2013 - 31.12.2015

- Resources needed :
About : 21 mil Euro

- Stakeholders involved:
 - Local and regional administration
 - Waste processing companies
 - Environmental agency
 - Power plant operator

Evidence of success:

- Results achieved
 - Smaller quantities deposited on the landfill.
 - Removing the pollution produced by the slag and ash deposit of the closed power plant

- Stakeholders acceptance
 - The environmental agency noticed the progress of local authorities in implementing environmental protection measures
 - The tasks of power plant operator became easier by eliminating a polluter.
 - Local authorities appreciated that a problem of local communities has been solved.

Lessons learned:

- Key success factors

- Involving all stakeholders in such activities;
- European financing of the project;

Negative aspects:

- Low quality of compost;
- For the beginning a small amount of CLO leading to a longer duration of deposit coverage

- Challenges:

- Connection rate to sanitation services in urban and rural areas of 100% (without biodegradable fraction we don't have compost),
- The beginning of an optimized separate collection of waste (packaging waste vs. biodegradable fraction)

Contact details:

Silviu Tamis

silviu_tamis@yahoo.co.uk

Mehedinti County Council

Romania



WINPOL

Interreg Europe



European Union
European Regional
Development Fund

Thank you!

Questions welcome



www.interregeurope.eu/winpol