

# INNO INFRA SHARE

Interreg Europe



European Union  
European Regional  
Development Fund

## Map, Learn, Act

**Valeria Bandini**

ASTER, Head of Unit, Europe and Internationalisation  
Bologna, Emilia-Romagna (Italy)

[valeria.bandini@aster.it](mailto:valeria.bandini@aster.it), [www.aster.it](http://www.aster.it)

Webinar 6<sup>th</sup> June 2018

 **ASTER**  
innovazione attiva

# TOPICS

1. **INNO INFRA SHARE PROJECT**
2. **RII MAPPING & GOOD PRACTICES**
3. **EMILIA-ROMAGNA EXPERIENCES:**
  - RII MAPPING
  - BIG DATA: FROM VOLUME TO VALUE
  - INDUSTRY 4.0
4. **LEARN → CONNECT**
5. **LESSONS LEARNT**

# INNO INFRA SHARE

Axis 1: Research and Innovation

Phase 1: 2017-2018

Phase 2: 2019-2020

**Main objective:**  
**to improve the accessibility and the  
exploitation of local Research and  
Innovation infrastructure (RII) by SMEs**

***Partnership:***

ASTER Stock Joint Consortium (LP)

Brainport Development (NL)

Vidzeme Planning Region (LV)

Tartu City Government (EE)

Flanders Make (BE)

Region Skane (SE)

Brno University of Technology (CZ)

Chemnitz University of Technology (DE)

INNO INFRA  
SHARE  
Interreg Europe

INNO INFRA  
SHARE  
Interreg Europe



An interregional cooperation project for  
improving innovation infrastructure policies.

**Project Partners**

ASTER (IT)  
Flanders Make (BE)  
Brno University of Technology (CZ)  
Chemnitz University of Technology (DE)  
Tartu City Government (EE)  
Vidzeme Planning Region (LV)  
Brainport Development (NL)  
Region Skåne (SE)



[www.interregueurope.eu/innoinfrashare/](http://www.interregueurope.eu/innoinfrashare/)

# Shared definition of RII

*Research and Innovation Infrastructures are organisations that offer **services** to users to support the **translation** of **technologies** into actual **business**, useful **products** and **solutions**.*

*Core to the organisation is the availability of **state-of-the-art** and **innovation-oriented technology** infrastructure and experts than can provide support to business' innovation activity.*

(agreed among partners during the kick-off meeting after extensive discussion)

# RII MAPPING AND GOOD PRACTICES SELECTION

Mapping of Research and Innovation Infrastructures in partner areas, according to a common methodology:

[RII Mapping Template](#)

Identification of Good Practices:

[Good Practice Template](#)

Collection of good practices:

[Good Practices e-booklet](#)



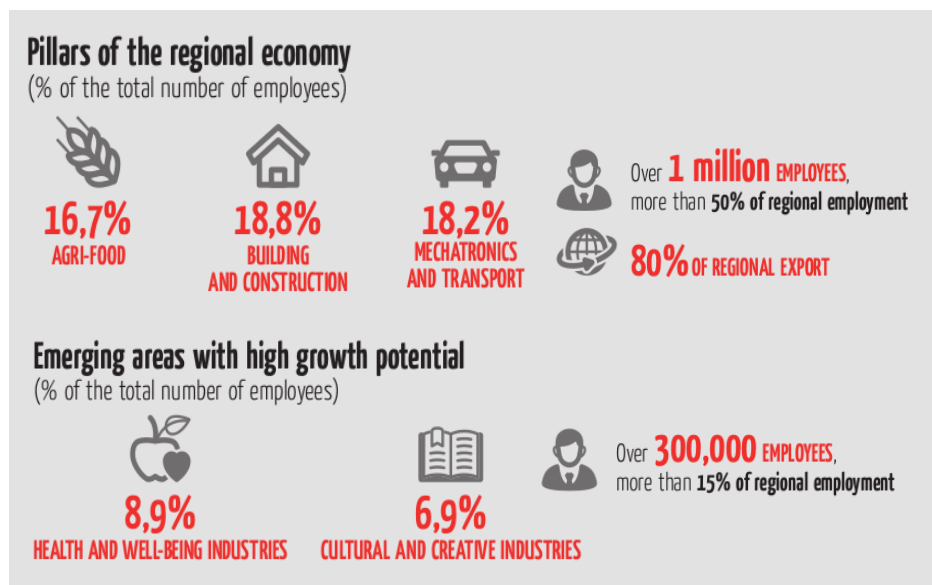
# RII MAPPING IN EMILIA-ROMAGNA

REGIONAL PROGRAMME FOR RESEARCH **AND INNOVATION** INFRASTRUCTURES (ERDF ROP 2014-2020)

Exploitation of the existing RI in order to improve their innovation potential coherently with the S3

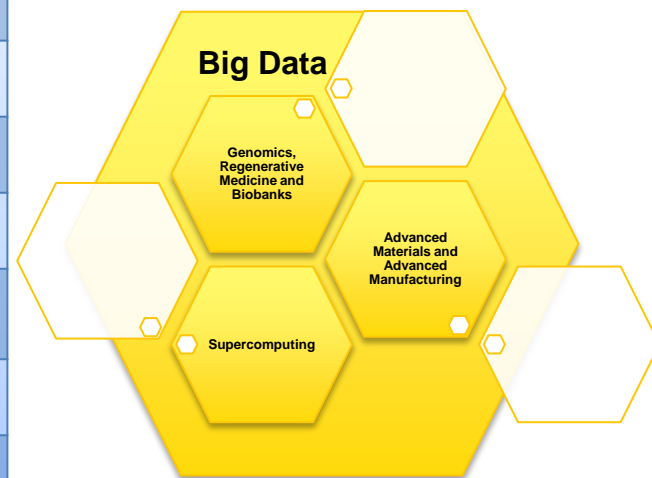
## THE METHODOLOGY

- **STEP 1 – MAPPING OF RII**
  - ✓ Indicators
  - ✓ Desk analysis
  - ✓ Field analysis
- **STEP 2 – SUMMARY AND PROGRAMMING**



# MAIN RESULTS

<b>RESEARCH AND INNOVATION INFRASTRUCTURES</b>	<b>116</b>
<b>TOTAL VALUE OF SCIENTIFIC FACILITIES</b>	<b>196,9 M€</b>
<b>FOREIGN RESEARCHERS HOSTED</b>	<b>2614</b>
<b>PERSONNEL FTE</b>	<b>1182</b>
<b>VALUE OF THE COLLABORATIVE (APPLIED) RESEARCH CONTRACTS</b>	<b>79,3M€</b>
<b>VALUE OF RESEARCH CONTRACTS</b>	<b>284,8M€</b>
<b>PATENTS</b>	<b>258</b>
<b>SPINOFF</b>	<b>37</b>



**INDUSTRIE CULTURALI E CREATIVE**

**30**

**INDUSTRIE DELLA SALUTE E DEL BENESSERE**

**63**

**MECCATRONICA E MOTORISTICA**

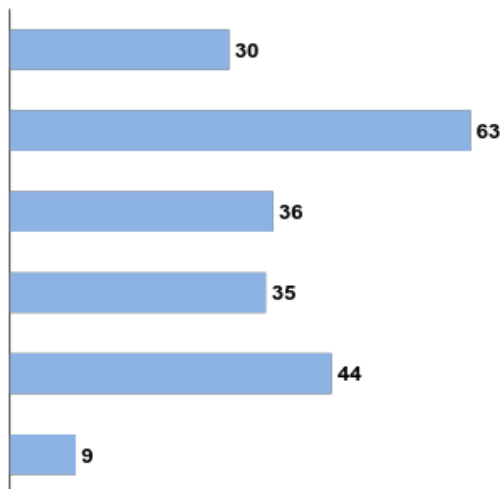
**36**

**EDILIZIA E COSTRUZIONI**

**35**

**AGROALIMENTARE**

**44**





# BIG DATA: FROM VOLUME TO VALUE

## *Objectives:*

- gather information on figures, expertise, technologies and facilities existing in the Emilia-Romagna region as for supercomputing and big data
- to exploit the potential of available resources to generate new opportunities in terms of scientific progress, as well as social and economic growth
- aligned with regional S3

"70% of the super-calculation capacity of the country is concentrated in Emilia-Romagna. On big data alone we have a network of 1,800 engineers, 230 foreign researchers on a permanent basis and 60 higher education courses. The future of manufacturing, sciences, medicine is based on the ability to manage huge amounts of data. We don't have to invent anything. We already have everything, it just needs to be put into the system"

Patrizio Bianchi (Councillor Region E-R)



[From Volume to Value](#)

[Video: ECMWF Data Centre in Bologna and Additional information](#)



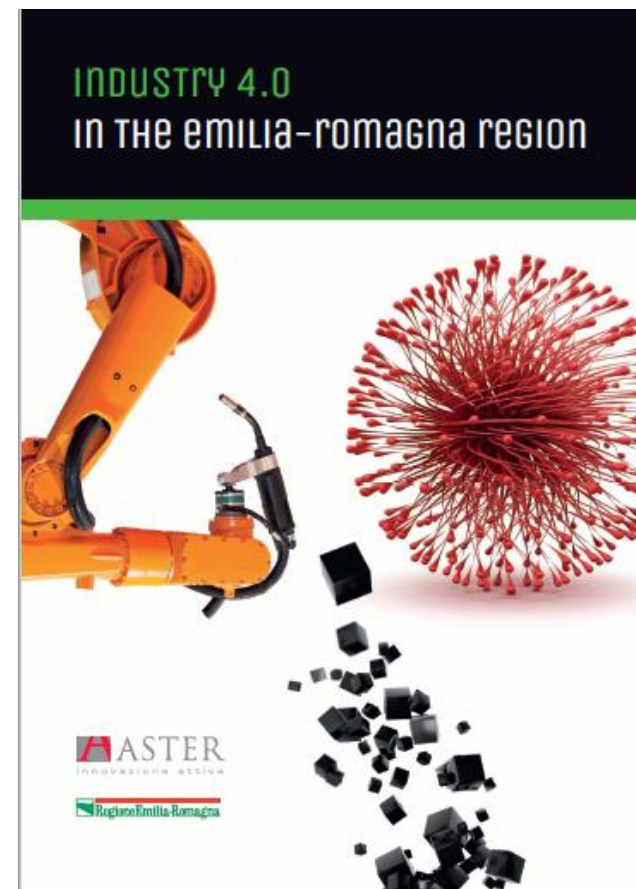
# INDUSTRY 4.0 MAPPING

## Objectives:

- map Industry 4.0 regional assets
- identify regional perimeter of the **Industry 4.0 enabling technologies and related competencies**
- **develop a vision** on Industry 4.0 for the strategic sectors of the Region

## Contents:

- Infrastructures
- Education and training
- Competencies supporting innovation
- Project development skills
- Market oriented activities (patents and spin-offs)
- Synergies and vision for Emilia-Romagna S3



**Industry 4.0 in the Emilia-Romagna Region**

# LEARN → CONNECT

*MAPPING for LEARNING (and ACTING) is useful to:*

- *have a precise **knowledge** about existing assets and their potential*
- *create (more) **connections** between scientific and technology assets with the (regional) **innovation ecosystem**, taking also into account the wider national, European, international perspective*
- ***mobilise and engage actors** (key players - regional stakeholders) and **join forces** (on converging interests, with synergies of resources)*

*CONNECT for DEVELOPING NEW ACTIONS:*

- *Exchange experiences and focus on **priorities** and **common objectives***
- *Promote **collaboration** at regional and interregional level*
- *Develop feasibility (short-medium-long terms) plans and **new actions***

# LESSONS LEARNT

MAPPING, based on a collaborative approach, is useful to collect information and to:

- discover the unknown
- let stakeholders gain visibility and create a networking space
- share views and ideas
- provide the policy maker with 'bottom up' views

*and also*

- contribute to S3 implementation
- get prepared to 'scale up' at the European level (ESSP)

Collective LEARNING enables diffused KNOWLEDGE and create the conditions to ACT FASTER, exploit OPPORTUNITIES, plan and implement NEW SERVICES, JOINT ACTIONS, INTERREGIONAL COLLABORATION, etc.

*Sharing commitment, competencies and skills make the difference*



# INNO INFRA SHARE

Interreg Europe



European Union  
European Regional  
Development Fund

## Thank you!

Questions welcome!

