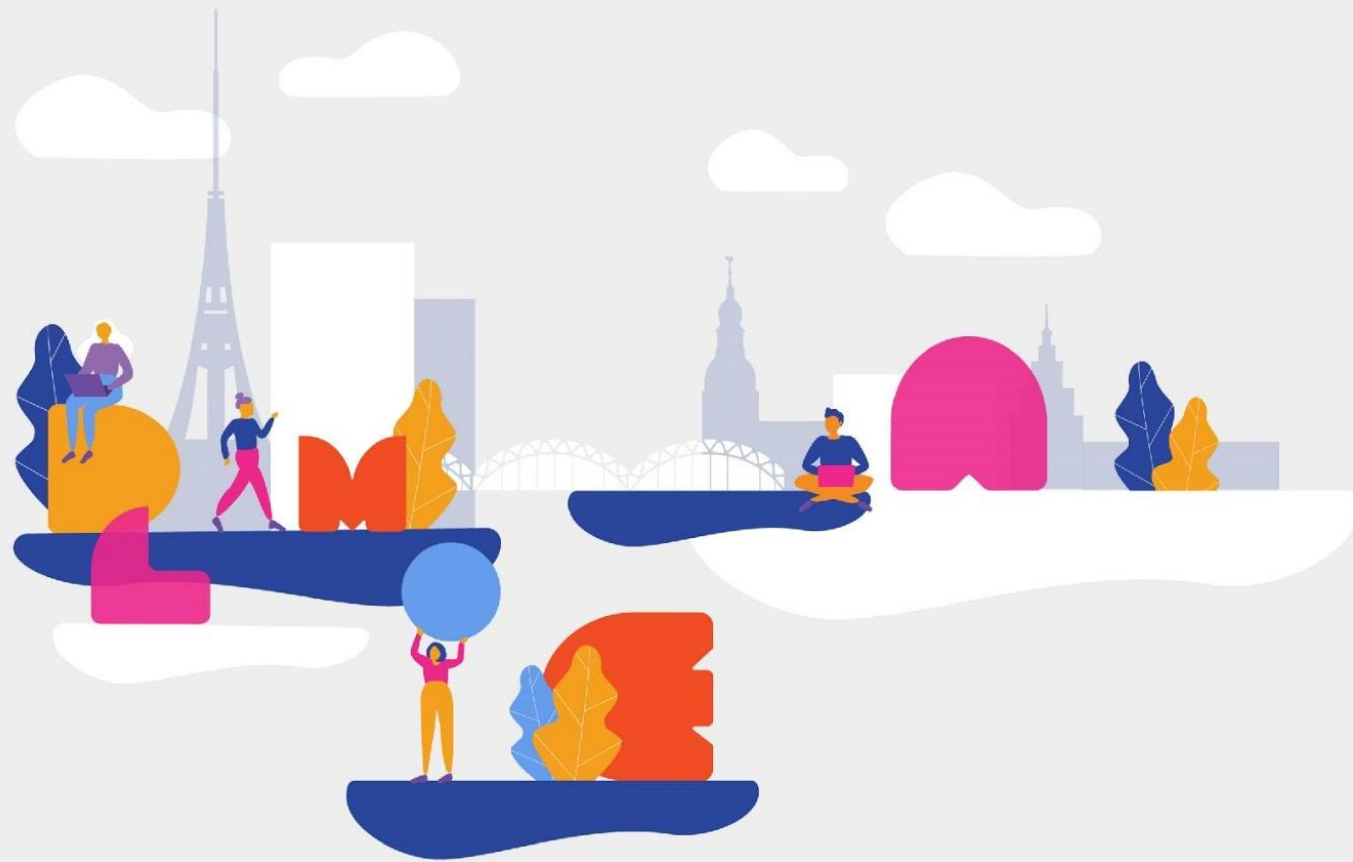


DEMOLA Latvija



DEMOLA

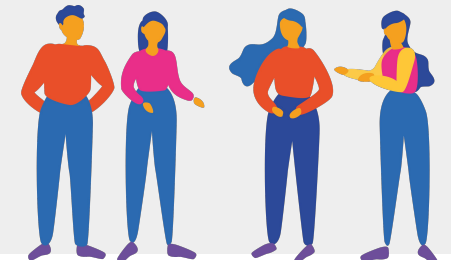


DEMOLA Latvia is an international innovation platform that unites students and leading Latvian brands.

Companies submit **real business challenges** to Demola.

Students develop **solutions** to given challenges, working in **multidisciplinary, international** teams.





Spring season

February - June

Fall season

September - January

**12 weeks' intense design process
based in design thinking methodology**

What's in it for COMPANIES?

- **INNOVATIVE SOLUTION** for the **FUTURE** based in research and validation
- Meet bright young minds & possible future **EMPLOYEES**
- Create a **MODERN** and innovative company image
- Get an insight into future **TRENDS**
- New insider **INFORMATION** about the industry
- Gain **KNOWLEDGE** about innovation management



What do we PROVIDE?

- **SELECTION** of the best student teams
- **FACILITATION** of the process
- **EXPERTISE** from each field
- **COMMUNICATION** between teams & companies & communities
- **WORKSHOPS, LECTURES, SEMINARS** both for students and companies
- An **INFRASTRUCTURE** for work
- Individual **CONSULTING and MENTORING** for each team



Value Proposition



Company participation fee



scholarships for students

**1500 EUR
per
challenge**

**4000 EUR
per team**



support fund for research and prototyping

In case of a successful solution, to licence results, company pays additional licencing fee evaluating and choosing one of 3 levels

**Level 1 – 1000 EUR
Level 2 – 1500 EUR
Level 3 – 2000 EUR**

**2500 EUR
per team**

Results since 2019 (4 seasons)



200-300

student applications per season



17

universities



40

companies



43

challenges



24

licences bought

**excluding the current season with 13 cases*

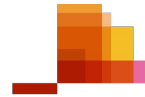


28 000

euro paid to students for solutions

**excluding the current season with 13 cases*

Luminor



MAXIMA



SAULES VESELĪBAS CENTRS

ELVA

pwc

httpool
ACCELERATE GLOBAL GROWTH



Swedbank



Latvenergo



the MUNIO

CONEXUS
BAL TIC GRID

DIMECC

MEŽPILS
ALUS



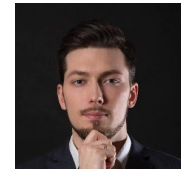
MANUFACTURING
SINCE 1998



vizULO



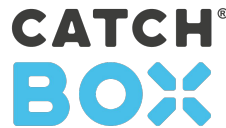
T2T



ANDŽEJA GRAUDA
BUNGU
SKOLA



forevers



omniva



SEB



laitecom

MaxTraffic

ERGO



Johnson & Johnson





How did it all start?

- Introduced in Latvia in 2014 after a visit of university and business representatives to Finland
- Lead by IT Cluster till 2017
- Supported by Ministry of Economics and Investment and Development Agency of Latvia
- It took a while to get first cases from companies due to a new and unexpected form of cooperation

But how did it all start?

- Since 2017 run by Riga Technical University and University of Latvia after IT Cluster transfers ownership
- First years supported by the Investment and Development Agency of Latvia
- Since 2019 - supported by ERDF under “Student innovation grants programme”



Wednesday 27 January 2021

13:00

Emission movement

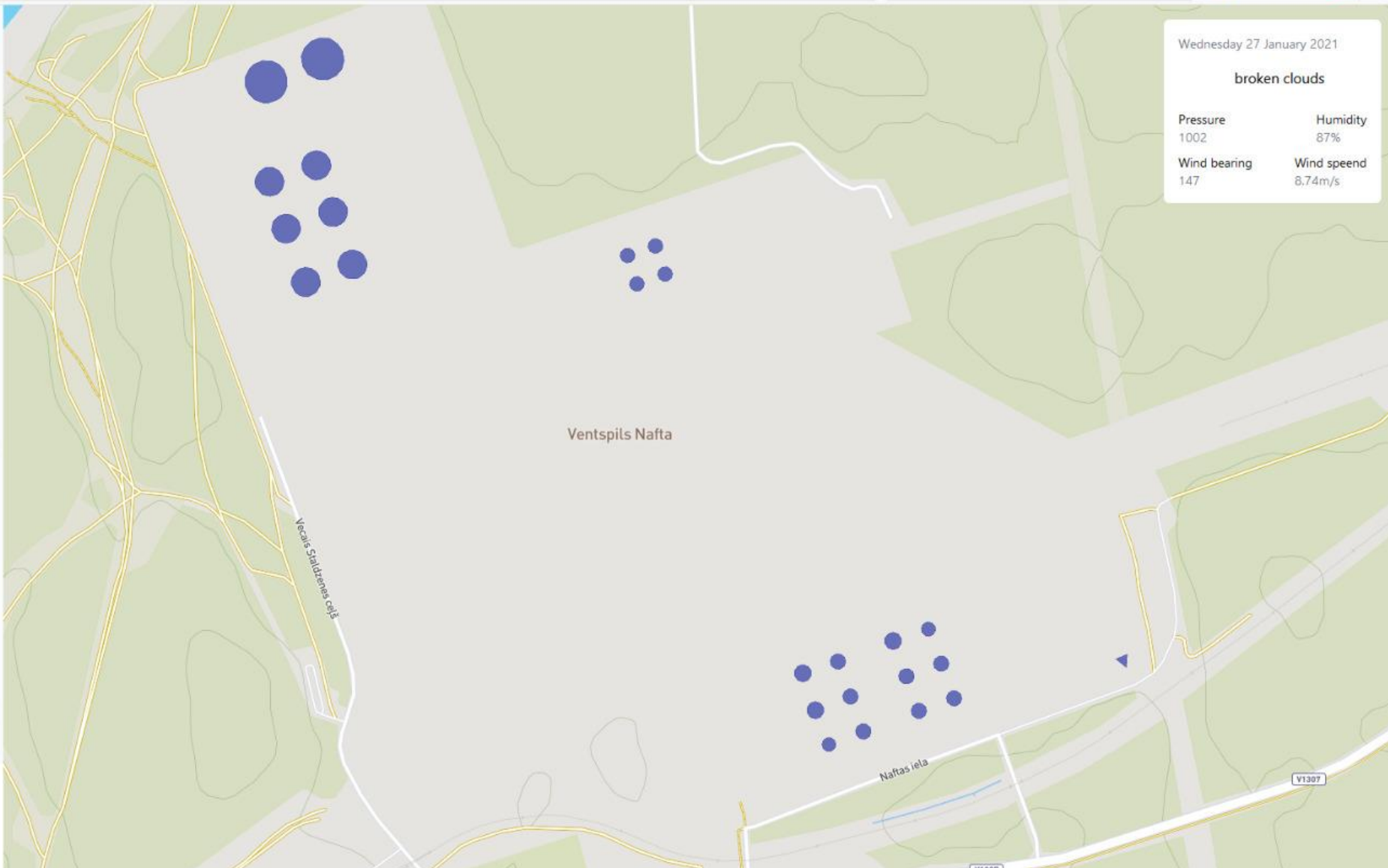
Select one of rendered predictions.

- Heatmap
Rendered as heatmap
- Hexagon
Rendered in hexagon clusters

Layers

- Bearing Overlay
Show wind bearing overlay
- Wind Overlay
Show wind overlay
- Temperature Overlay
Show temperature overlay
- 3D Building Overlay
Show extruded building models

Show Operations



+ Add Operation

<input type="checkbox"/>	REFERENCE	PRODUCT	TRANSITION	QUANTITY	DATE & TIME
<input type="checkbox"/>	OP001	Ether	130 > 119	5000m ³	29/12/2020



Problems We Defined Based on the Research



● Old-fashioned inner applicant data storing system

● Too many online application channels

● Application processing is inefficient

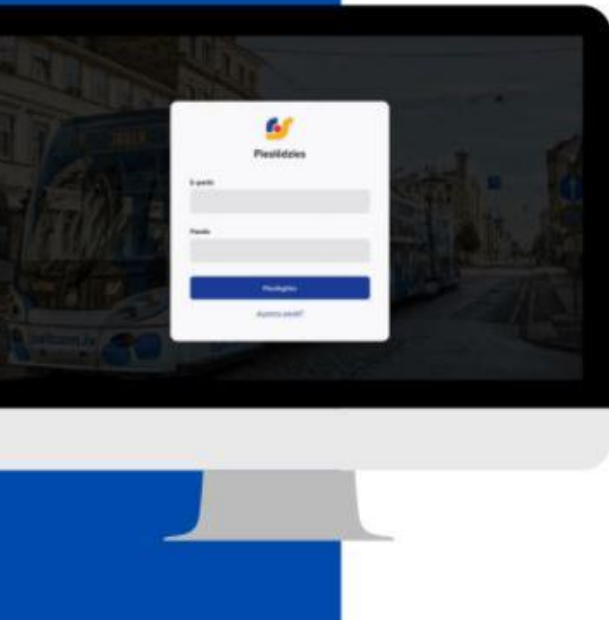
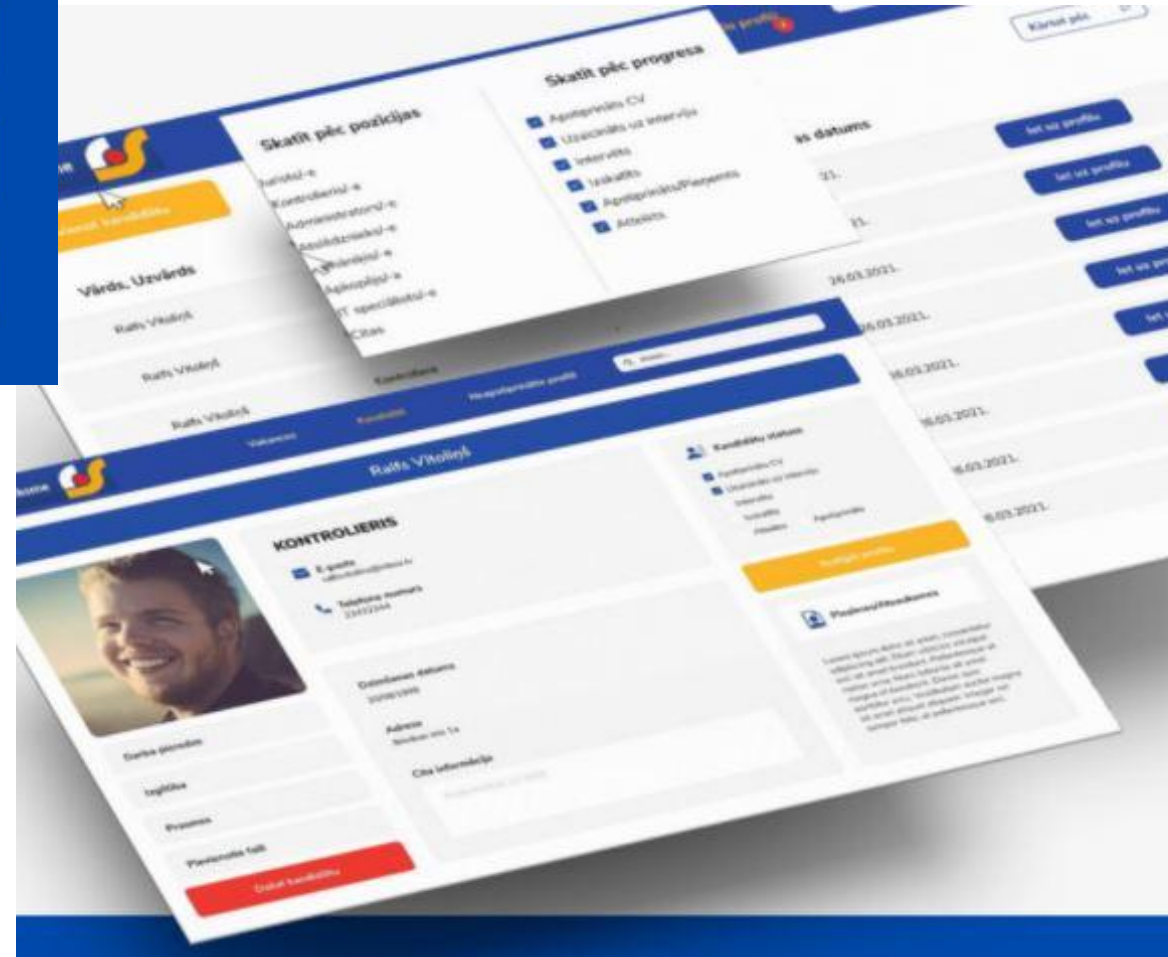
● System is not built for so many applications

OUR SOLUTION

Fully functional and designed wireframe of an internal recruiting software

Features:

- Overview of all vacancies & candidates
- Candidate & vacancy profiles
- Automated application entry
- Excel report extraction





Signe Adamoviča

signe.adamovica@rtu.lv

+371 29393928

Lilita Sparāne

lilita.sparane@ba.lv

+371 29180042