

**Interreg
Europe**



European Union | European Regional Development Fund



Collection and recycling of construction and demolition waste

Circular waste management series IV

Online webinar, 17 February 2022

Astrid Severin

Thematic Expert Environment & Resource Efficiency |
Interreg Europe Policy Learning Platform

a.severin@policylearning.eu



Agenda

- **Welcome & Introduction**

- Astrid Severin, Interreg Europe Policy Learning Platform

- **Keynote presentation**

- Jean-Benoît Bel, ACR+ on 'Improved resource efficiency through better policies for construction & demolition waste'

- **Interreg Europe policy changes & good practices**

- **Estimating quantities and types of waste in construction** (CONDEREFF) – Vicente López Mateu, Polytechnic University of Valencia (ES)
- **Memorandum of Understanding for construction and demolition waste** (CIRCE) – Sara Grassi, ANCE Lombardy (IT)
- **Austrian Recycling Building Materials Ordinance** (CONDEREFF) – Ingrid Winter, Regional Government of Styria (AT)

- **Panel Discussion**

- **Wrap up & Conclusions**



Interreg Europe 2021-2027

Key objective stays the same:

Improving regional development policies through exchange of experience, innovative approaches and capacity building

Slight evolution in eligible area & budget

2014-2020

30

**countries
involved**

MEUR 359

2021-2027

29

**countries
involved**

MEUR 379



Interreg Europe 2021-2027

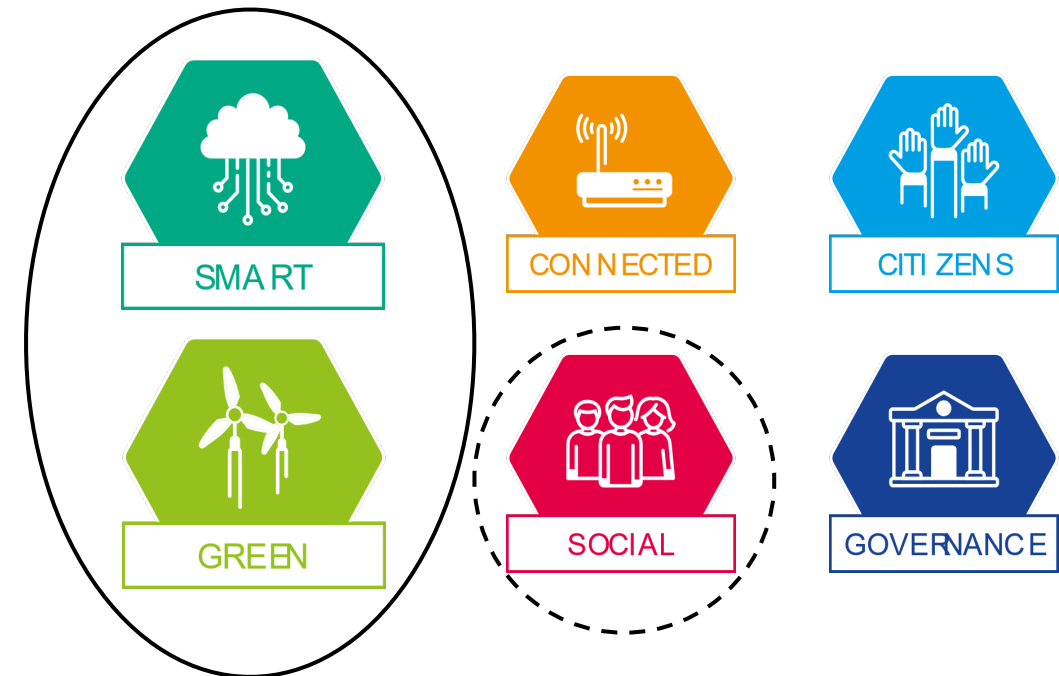
2014-2020

4 thematic priorities



2021-2027

1 cross cutting priority on capacity building



Concentration principle (80%)



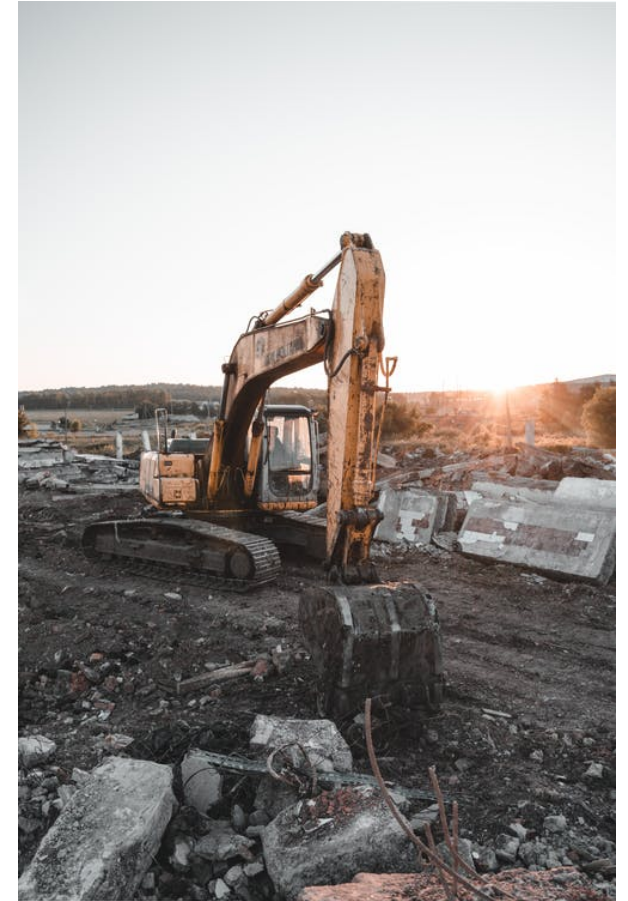
Get ready for the first call for project proposals

- The call will **open on 5 April and close on 31 May 2022** at noon.
- Check the related documents on the website
- Join **#europecooperates on 5 April 2022** to get more information about the call and pitch your project ideas
- Find out whether there is an **information day** in your country presenting our new programme and the call



Construction and demolition waste facts and figures

- **More than a third of all waste generated in the EU (over 35%)**
- **Wide variety of materials**
 - Concrete, bricks, wood, glass, metals, plastics, ...
 - Also hazardous materials such as asbestos
- **Recycling and material recovery varies greatly across the EU, from less than 10% to over 90%**
- **About 450-500 million tonnes of construction and demolition waste (CDW) generated every year in Europe**
 - Concrete at least one third





European framework for CDW

- **Waste Framework Directive**
 - Target to increase re-use/recycling/recovery of CDW to a minimum of 70% by 2020
 - Promote selective demolition to enable removal and safe handling of hazardous substance
 - Minimize waste generation
 - **Construction and Demolition Waste Management Protocol** (guidelines on how to manage CDW)
 - **Guidelines on audits before demolitions**
- **Circular Economy Action Plan**





Policy solutions for management of construction and demolition waste

- **Policy solutions from CIRCE, CONDEREFF, SMART WASTE on**
 - Collection
 - Use of recycled construction materials
 - Tenders and incentives
 - Estimation of quantities
 - And more...



Get inspired!



**Interreg
Europe**



European Union | European Regional Development Fund

Thank you!

Astrid Severin

Thematic Expert Environment & Resource Efficiency

a.severin@policylearning.eu



[interregeurope](https://www.interregeurope.eu)