



European Union
European Regional
Development Fund



RETRACE ADDITIONAL ACTIVITIES

Réseau Consigne

A network of «*deposit systems*» initiatives

January 26th, 2023

Tyl Benjamin

APESA

Contact: Justine Roux (Les Retournées)





Description of the Network

■ Context about waste management in France

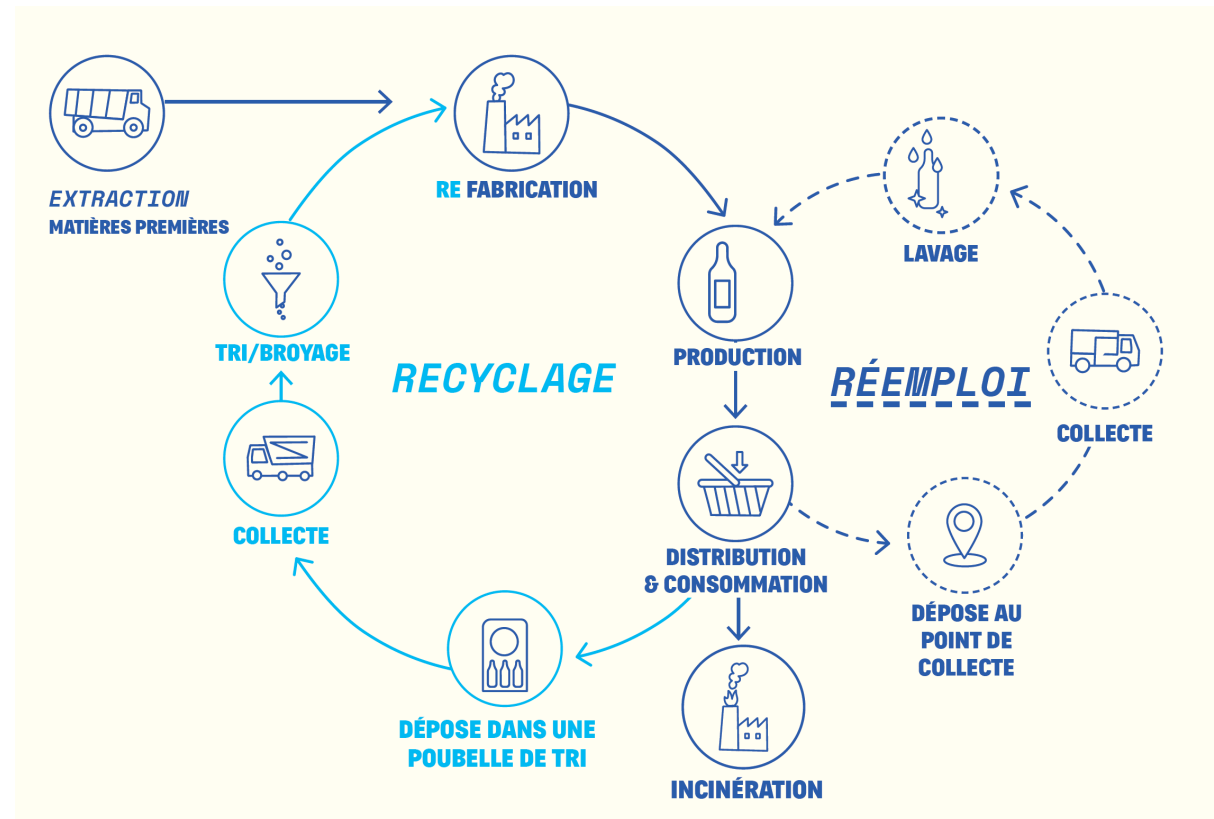
- In France, the deposit for re-use **gradually disappeared** in the 1980s with the arrival of disposable packaging
- Re-use of packaging has seen **a new boom in recent years**, thanks to the deployment in the territories of **operators who collect, wash and make available** re-usable packaging.
- Strong reglementation (AGEC regulation):
 - 10% of **re-used packaging** in 2027
 - 20% **reduction** of single-use plastic packaging en 2025, among which 20% obtained through reuse and **prohibition** of single-use plastic packaging in 2040
- 90% of the population want **the return of the deposit** for reuse on glass bottles.

Description of the Network



The deposit system

- Reusing packaging consists of **collecting, washing and putting back into circulation** packaging
- A reusable glass bottle can be reused up to 30 to 50 times before finally being recycled.
- The **deposit** refers to the **additional sum paid by the consumer** at the time of purchase and which is returned to him/her when he/she brings the packaging back to the collection point.
- **The deposit is a tool to ensure the return of packaging, without being the only one.**



Practical details of the initiative



■ Réseau Consigne: A network

Réseau Consigne is the **association** which federates the stakeholders of reuse and reuse of packaging in France:

- Project leaders, operators of the reuse sector and industrial washers, producers and distributors of foodstuffs or cosmetics, and suppliers for equipment (washing machines, label printers, packaging manufacturers, etc.).

Objectives:

- Supporting project holders, who should implement deposit systems and reuse packaging;
- Animating a network of actors, documenting good practices and inspiring experiences;
- Supporting the evolution of the policies to promote and facilitate the development of deposit systems
- Promote the reuse of packaging with citizens and federations professional



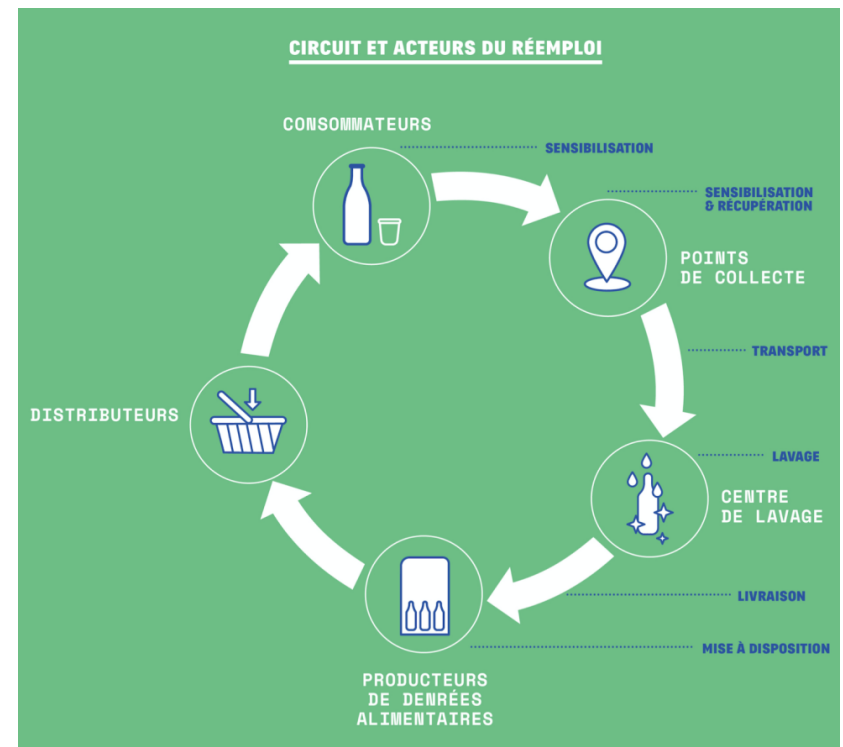
Practical details of the initiative

Practical details

- Created in 2012, today structured as an association since July 2019
- Around 80 members (operators in the reuse sector (bottles, jars, lunch boxes), industrial washers, producers and distributors of foodstuffs and cosmetics, service and equipment suppliers, and local authorities.)
- 2 employees

Learning potential

- Network of individuals and companies around an initiative that promotes the circular economy, allows to increase the knowledge of all actors regarding its practice
- Value chain logic
- Supporting policies and call of projects



<https://www.reseauconsigne.com/>