



GOVERNMENT OF MALTA
MINISTRY FOR EDUCATION,
SPORT, YOUTH, RESEARCH
AND INNOVATION



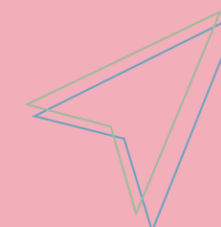
**NATIONAL
EDUCATION
STRATEGY**
2024 - 2030



ELET
EARLY LEAVING FROM
EDUCATION & TRAINING

Inclusive Futures: Preventing ELET and Supporting NEETs in Malta

Dr Pamela Marie Spiteri
Director Planning and Strategic Foresight



DIRECTORATE PLANNING
&
STRATEGIC FORESIGHT

Definition

“Early leavers are defined as individuals aged 18-24 who have completed at most a lower secondary education and were not in further education or training” (Eurostat, 2024)

WHAT IS ELET?



Impact

Personal: Limited career prospects and socio-economic challenges

Societal: Affects workforce readiness and social inclusion efforts



EARLY LEAVING FROM
EDUCATION AND TRAINING
STRATEGY

THE WAY FORWARD
2023-2030



GOVERNMENT OF MALTA
MINISTRY FOR EDUCATION, SPORT, YOUTH
RESEARCH AND INNOVATION
CONTRIBUTE FOR RESEARCH, LEARNING AND EMPLOYABILITY

The new ELET policy is one of the 5 main policies linked to the National Education Strategy (NES).

OVERALL GOAL: ACHIEVING THE EU-LEVEL TARGET

Decrease ELET rate to 9% by 2030

17%

2014

14%

2017

13%

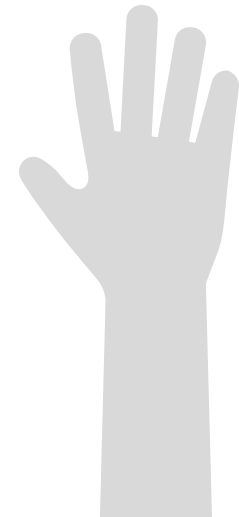
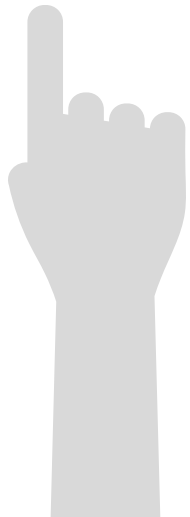
2020

9.6%

2024

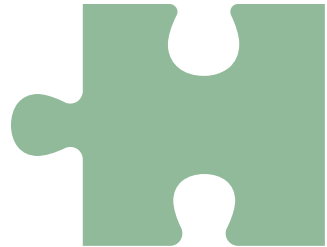
>9%

2030



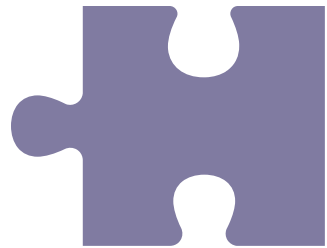
Aims and Objectives

A whole school approach to tackle ELET



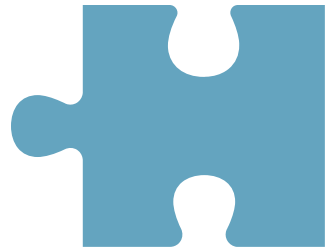
‘Ensure inclusive and equitable quality education and promote lifelong learning opportunities for all’

SDG4



Develop an Early Warning System (EWS) to monitor and target ELET risk indicators

A



Foster a whole school approach (WSA) to tackle ELET

B



Less than 9% by 2030

%

Early Leaving From Education And Training Strategy 2023-2030



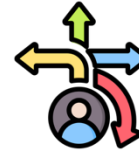
PREVENTION

TACKLING CAUSES EARLY



COMPENSATION

TARGETING POST-
COMPULSORY
EDUCATION

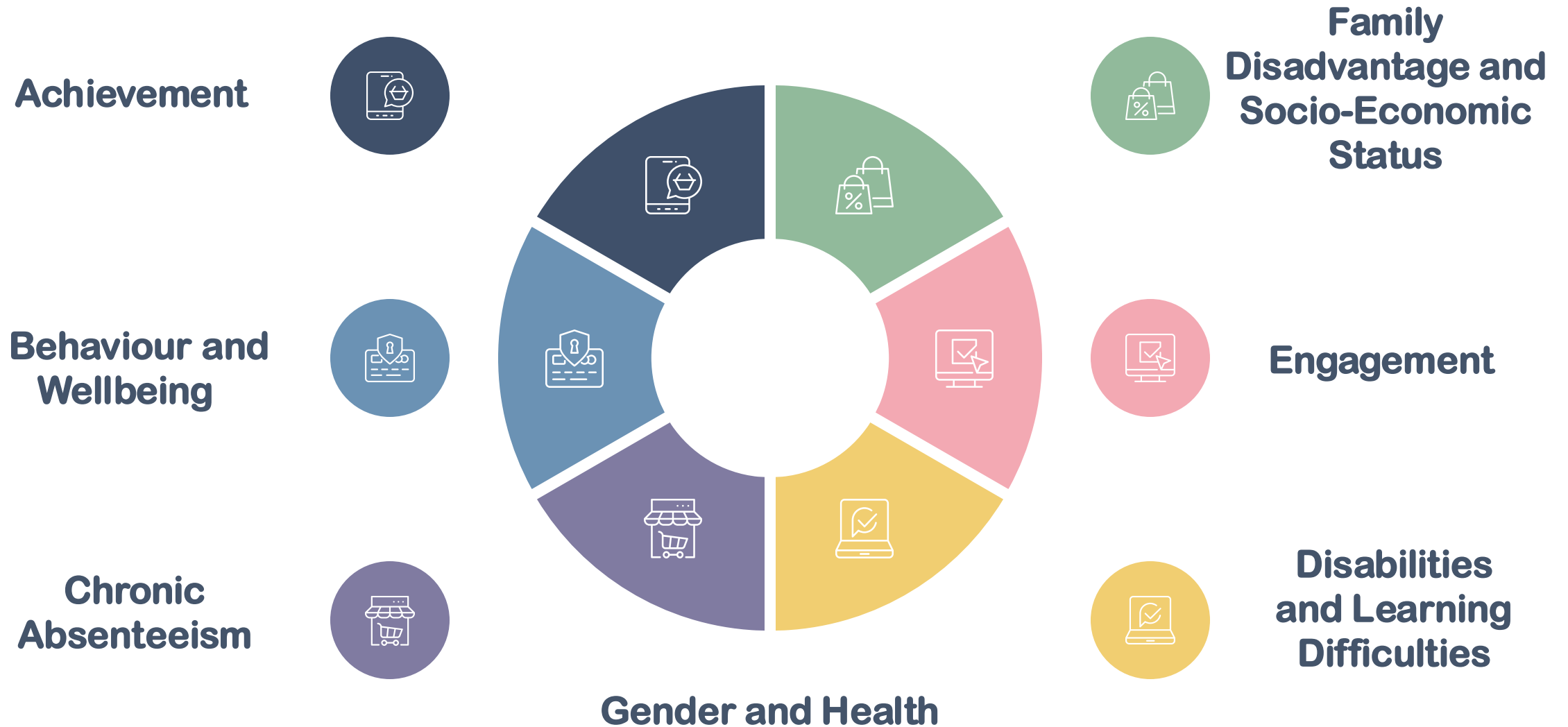


INTERVENTION

SUPPORTING AT-RISK
STUDENTS

WHAT TRIGGERS ELET?

RISK INDICATORS



KEY ACHIEVEMENTS FOLLOWING LAUNCH OF STRATEGY

Action Plan
(15 strategic actions and
88 deliverables)



FCSL Programme
(rollout and pilot)



FAMILY-COMMUNITY-SCHOOL LINK

FCSL

Data Warehouse
(evidence-informed)

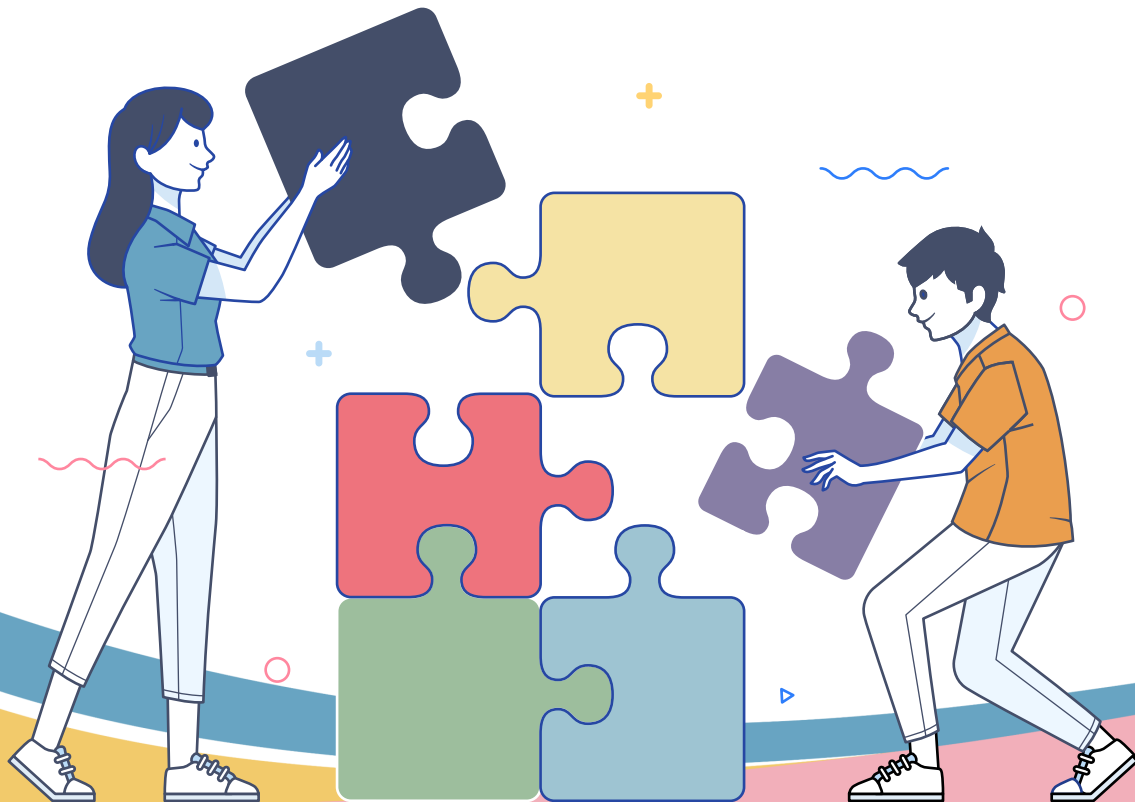


A paradigm shift to PREVENTION & EARLY INTERVENTION

PREVENTION

INTERVENTION

COMPENSATION



Flagship of the ELET Strategy



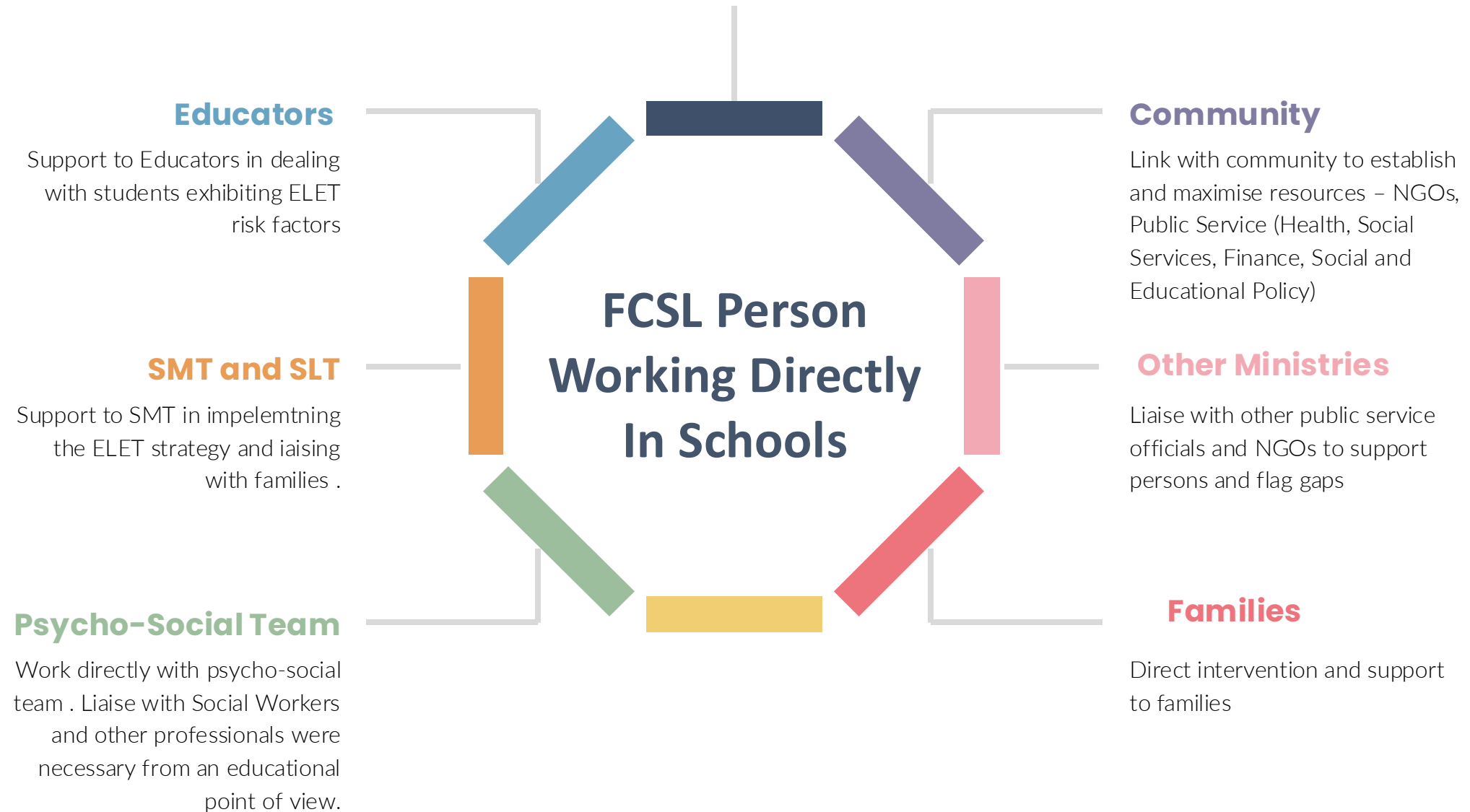
FAMILY-COMMUNITY-SCHOOL LINK

FCSL

FAMILY-COMMUNITY-SCHOOL LINK PROGRAMME (FCSL) –

A robust and methodical link between the school, the family and the community for a more holistic and homogenous approach to wellbeing. (NES, 2024-2030)

Transforming the link between school and home: Differentiated support in relation to ELET



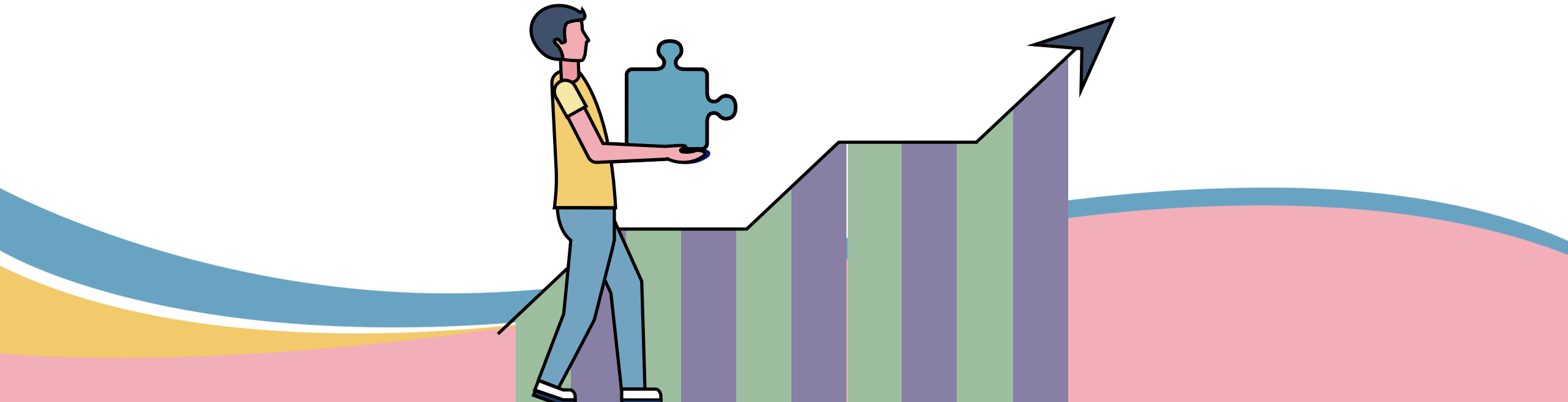
Statistics FCSL (Oct 2024- Jan 2025)

Total number of interventions since start of service

804

Total number of cases since start of service

191



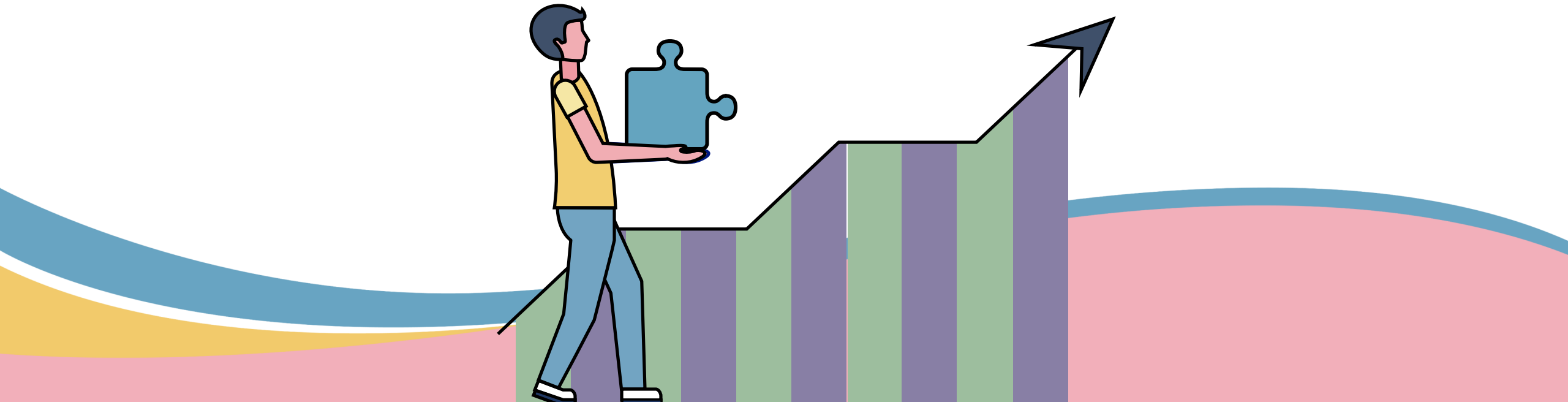
STATISTICS FCSL (Oct 2024- Apr 2025)

Total number of interventions since start of service

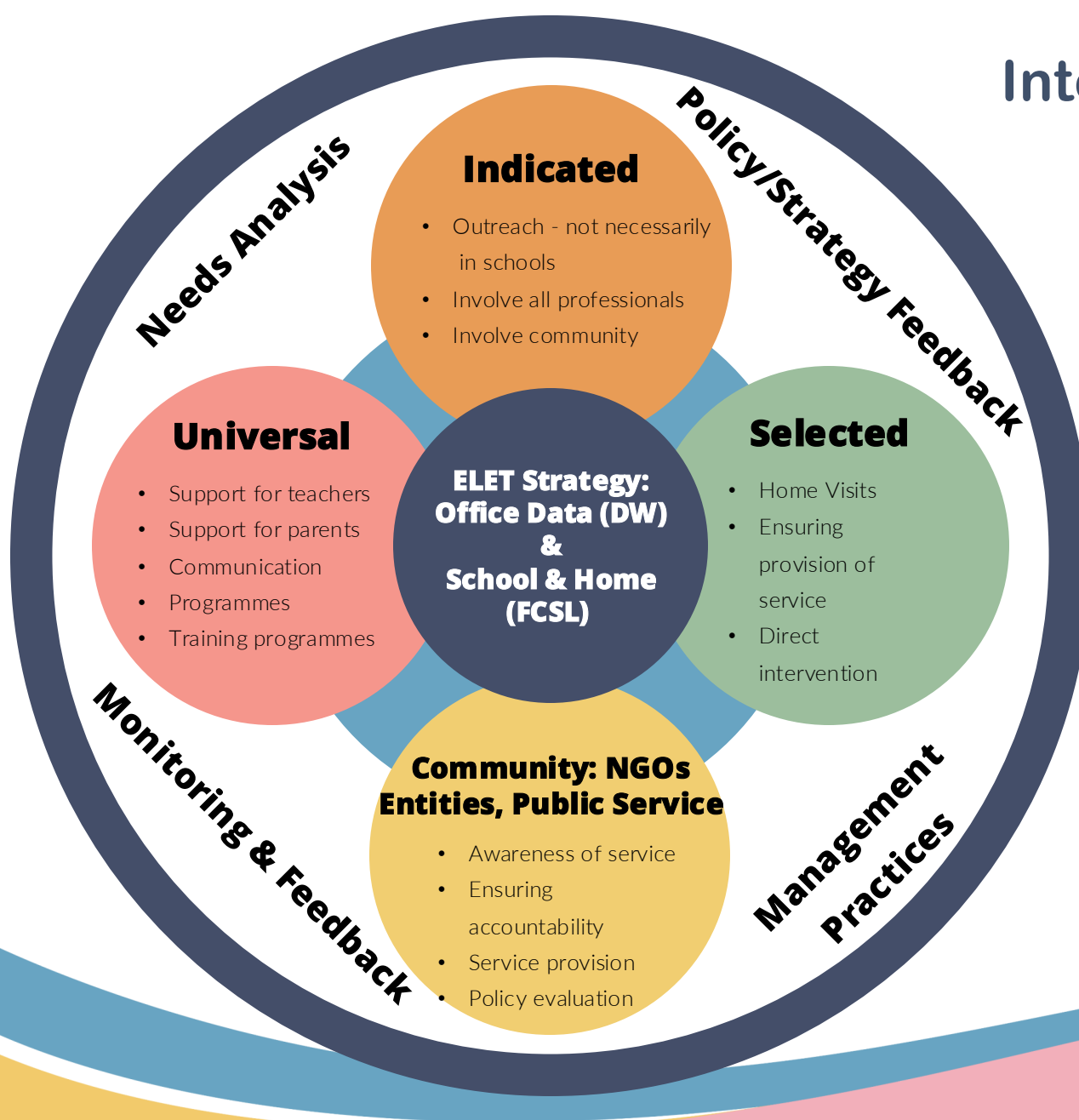
3,127

Total number of cases since start of service

839



Integrated Approach through the FCSL – Family, Community, School Link Programme

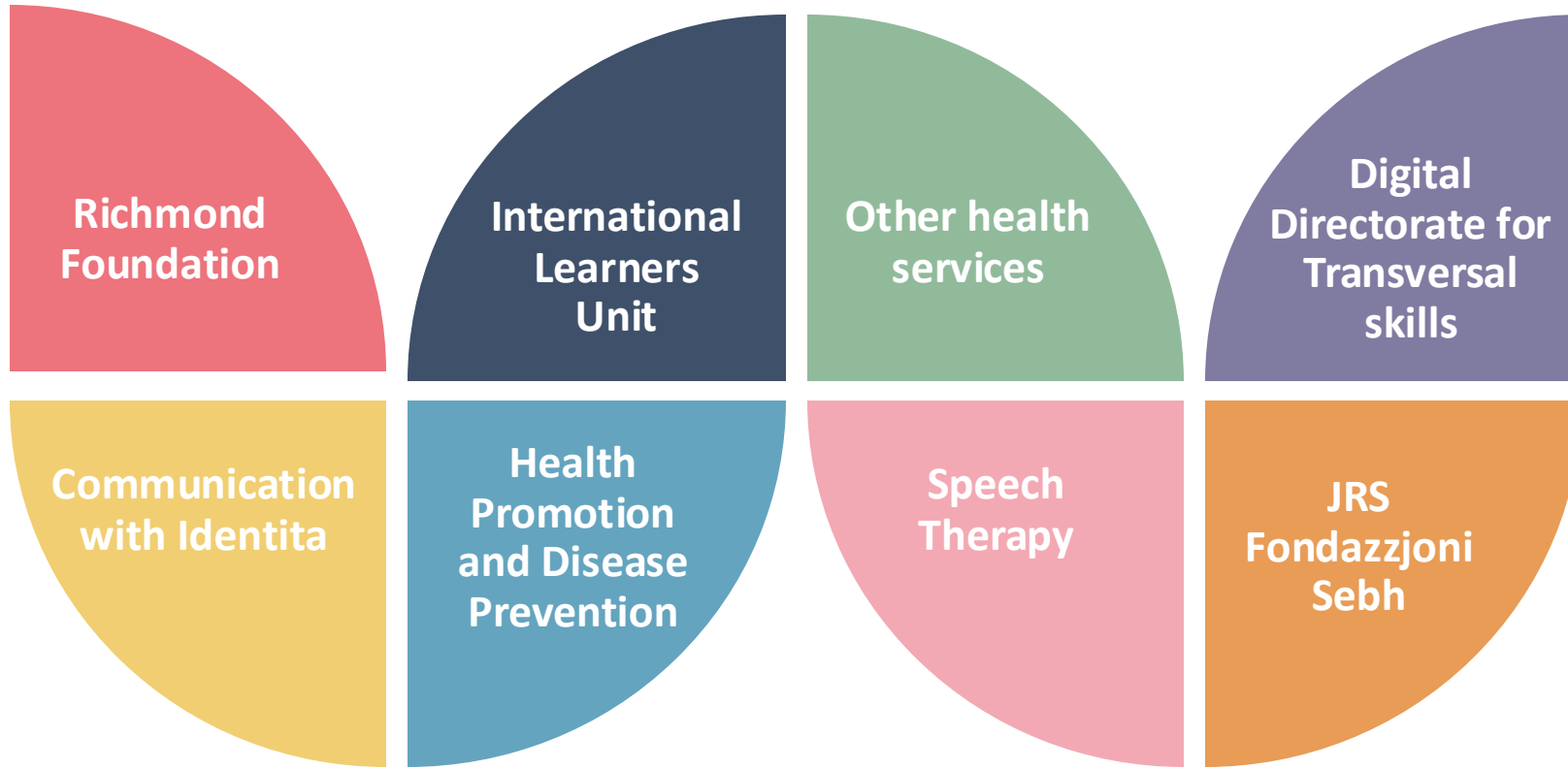


100+ services

At least 4
Ministries

Multiple NGOs

LIAISON WITH OTHER COMMUNITY SERVICES:



KEY INITIATIVES IN 2025

The graphic consists of three horizontal bars of different colors (yellow, pink, and blue) stacked vertically. Below these bars is a large, wavy shape that fills the bottom half of the page. This shape is composed of three overlapping layers: a yellow layer at the bottom, a pink layer in the middle, and a blue layer at the top. The waves are smooth and flowing, creating a modern, abstract look.

KEY ACTIONS

PILLAR 1 - PREVENTION

Free Childcare Scheme: Liaising with stakeholders to extend scheme.

Student aspirations: Targeting at-risk students to develop career aspirations, enhanced career guidance networks, address barriers in accessing post-compulsory education.

EduVoices Conference: Focus on foresight for addressing risk factors (integrated approach).

FCSL Programme: Continue targeted support for at-risk students through a whole school approach.

Evaluation of Pilot Project: The FCSL programme 2024-2025 will be evaluated to develop a strategic plan for extended implementation in 2025-2026 and beyond.

KEY ACTIONS

PILLAR 2 - INTERVENTION

Profiling Exercise: Analysing SSC&P achievement trends (levels 0-3) to identify risk patterns.

Reading Instruction: Liaising with internal stakeholders to develop specific reading guidelines focusing on increased reading time for language and reading instruction in schools.

Implementation Report: Reader-friendly version is being developed.

KEY ACTIONS

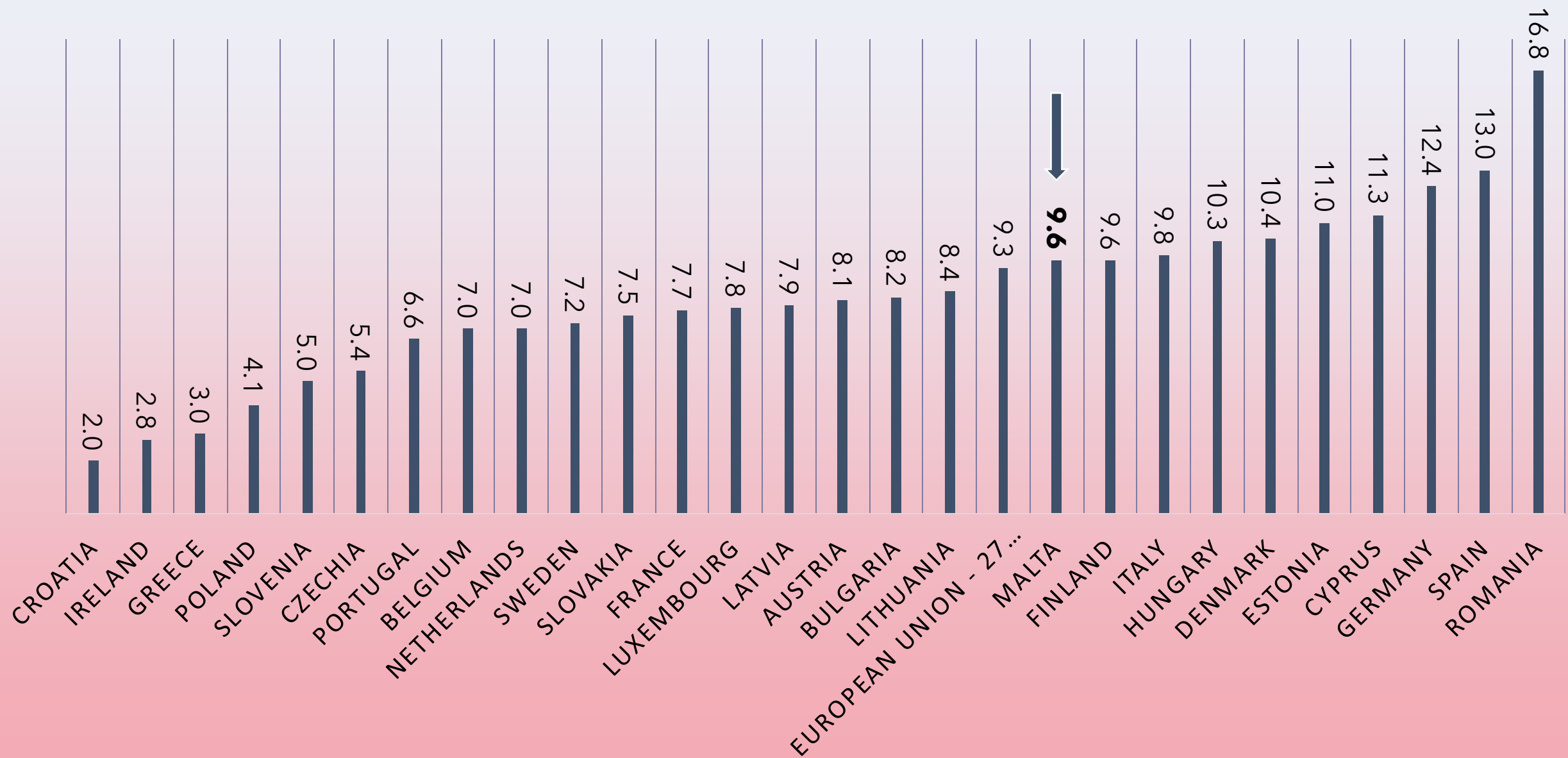
PILLAR 3 - COMPENSATION

Student Retention and Achievement: finalise the dropout study analysis to identify challenges and develop recommendations.

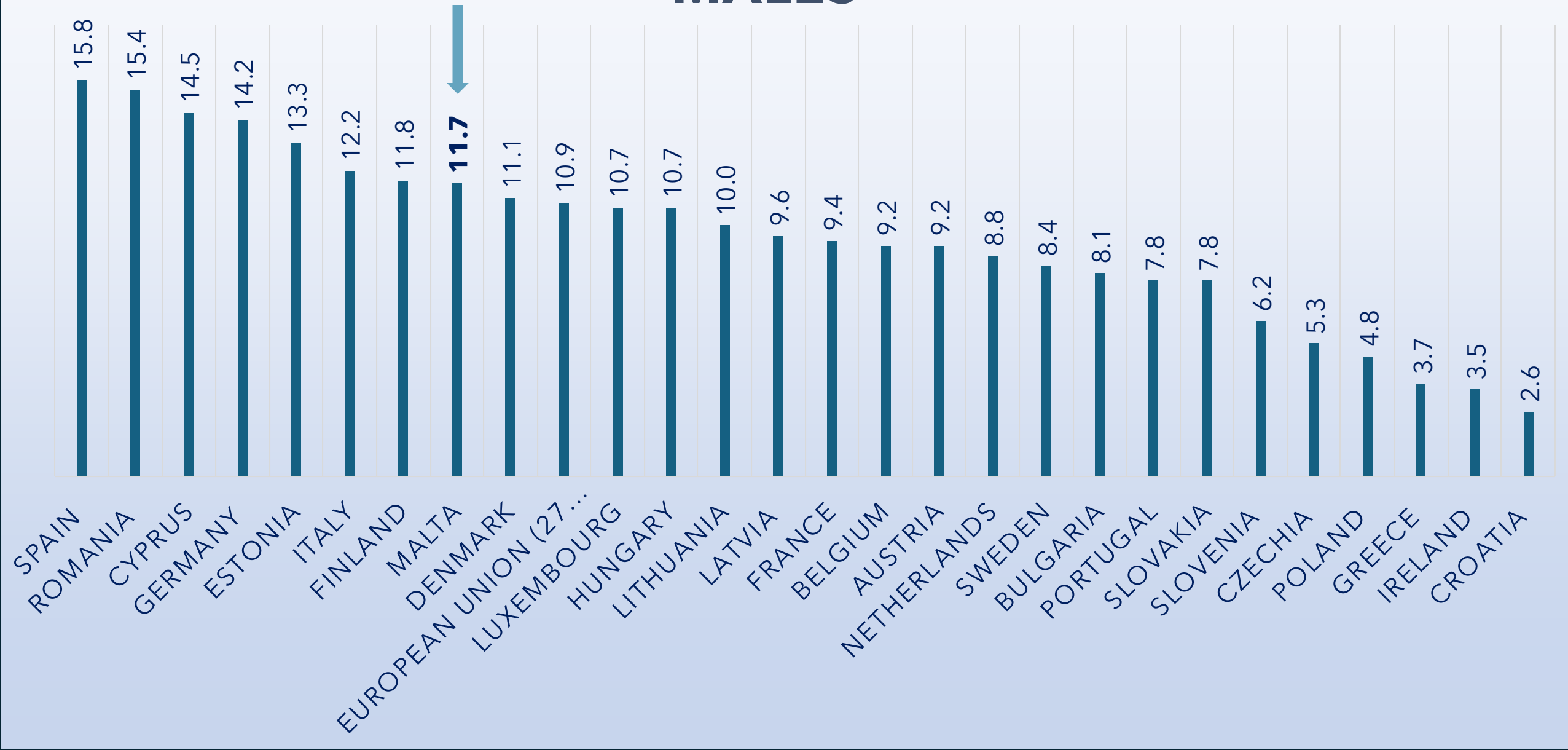
Post-Compulsory Education Working Group: consolidation the WG to discuss strategies aligned with the ELET strategy goals for post-compulsory education. This will include:

- Career aspirations development
- Eliminating barriers in accessing post-compulsory education
- Recommendations derived from dropout study
- Recommendations derived from evaluation of the Covid-19 period digital learning in post-compulsory and adult institutions
- Student enrolment and retention and role of career guidance
- Offering diverse course delivery modules

EU MEMBERS STATES' ELET RATES - 2024

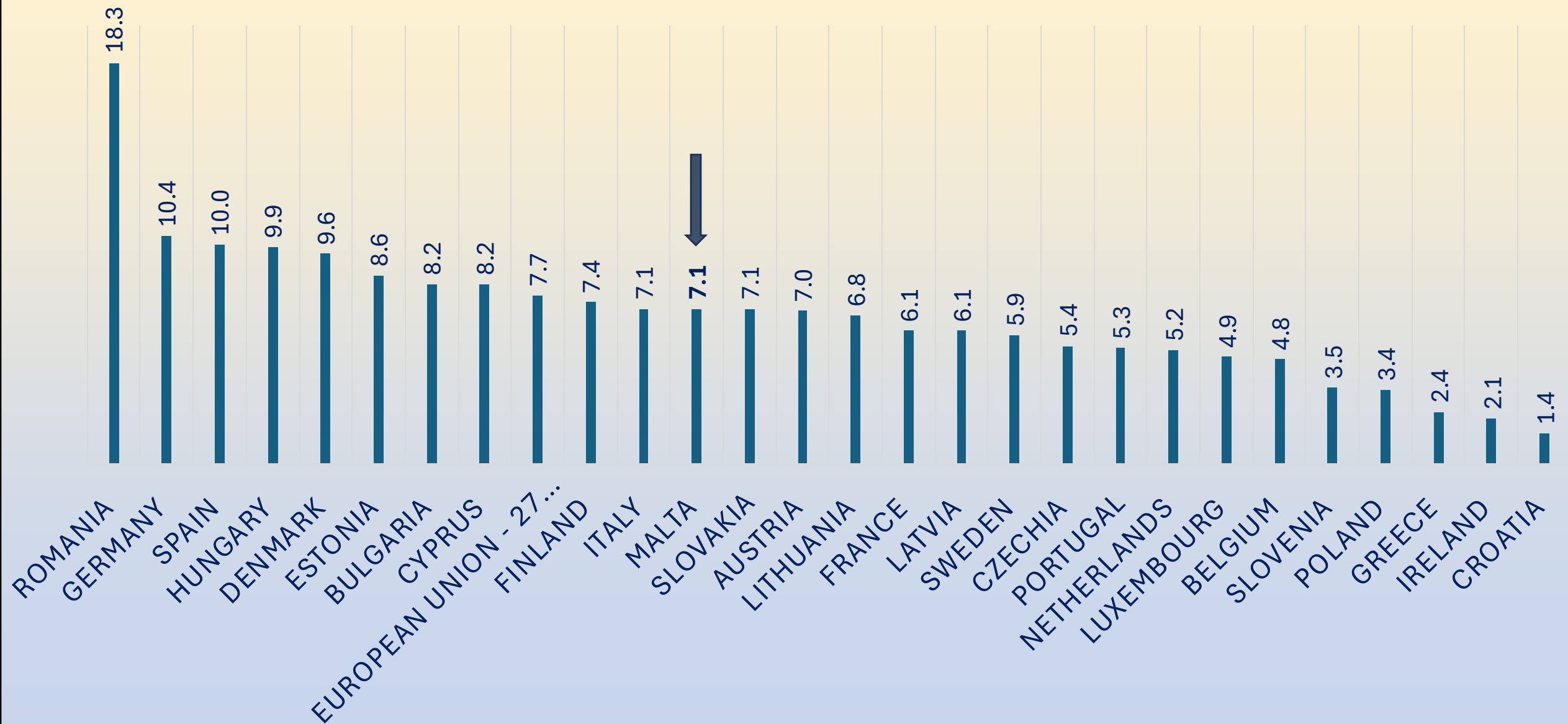


EU MEMBER STATES' ELET RATE 2024 - MALES

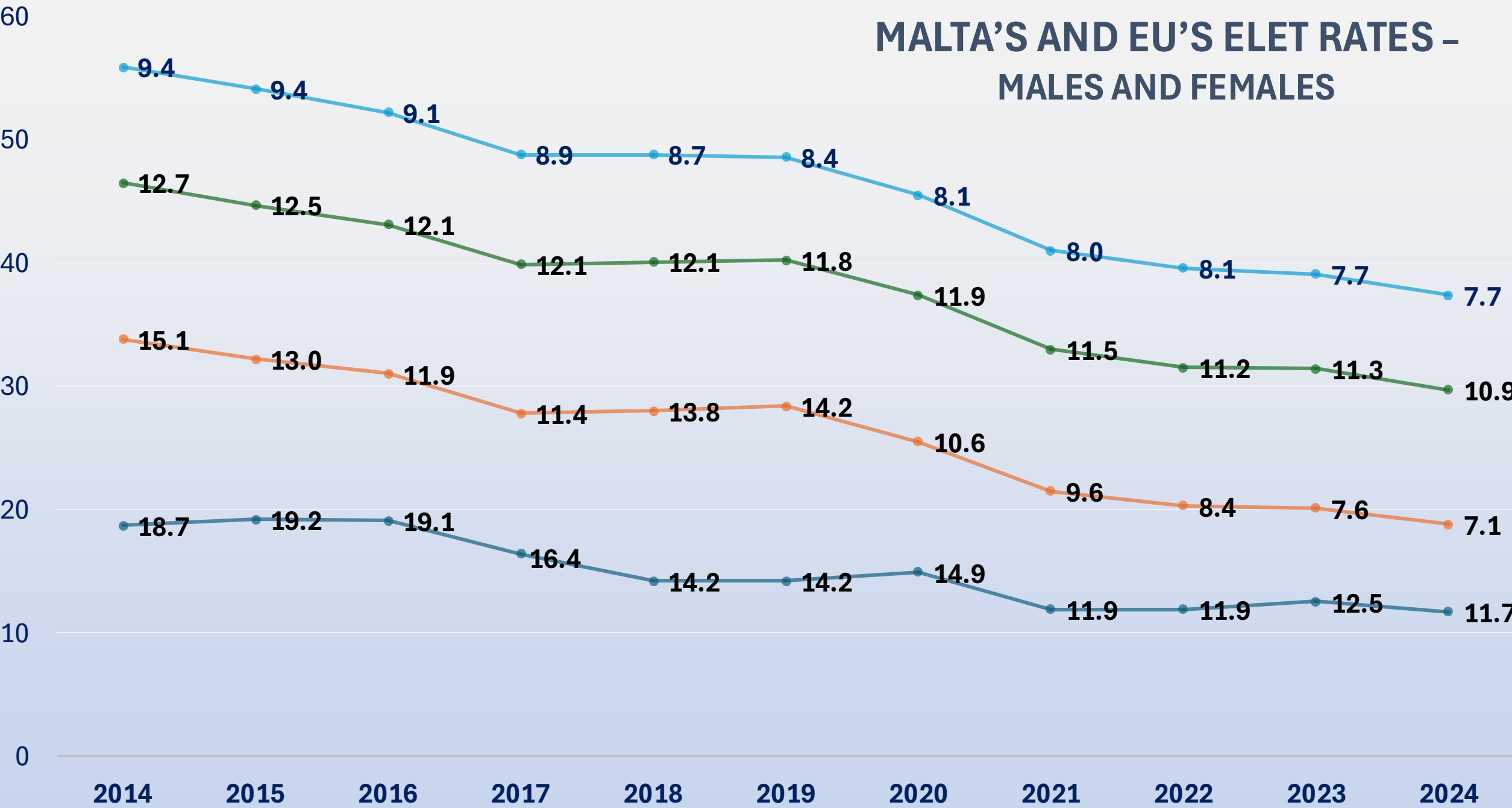


EU MEMBER STATES' ELET RATES 2024

- FEMALES

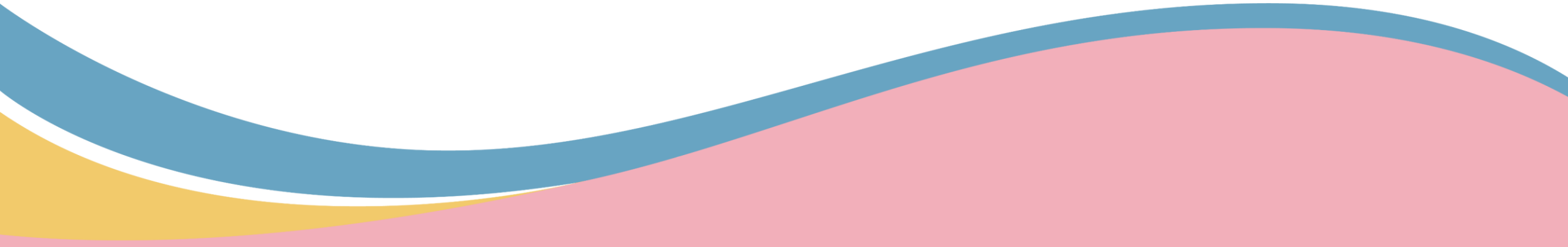


MALTA'S AND EU'S ELET RATES – MALES AND FEMALES



—●— Malta FI ET Males —●— Malta FI ET Females —●— EU FI ET Males —●— EU FI ET Females

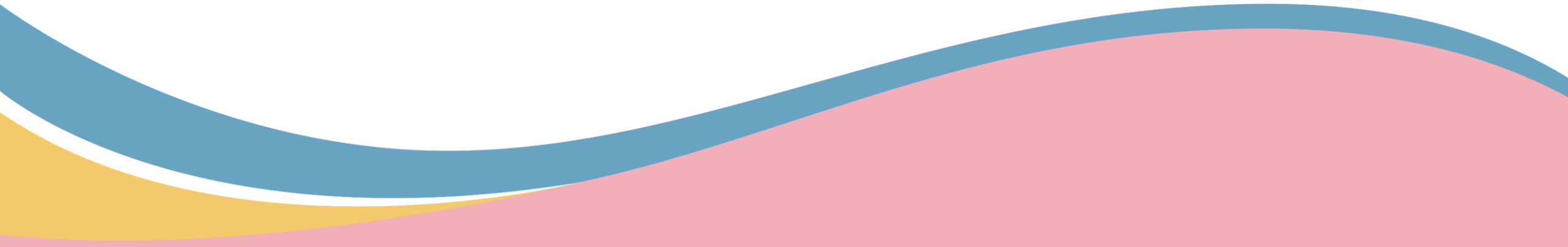
NEETs



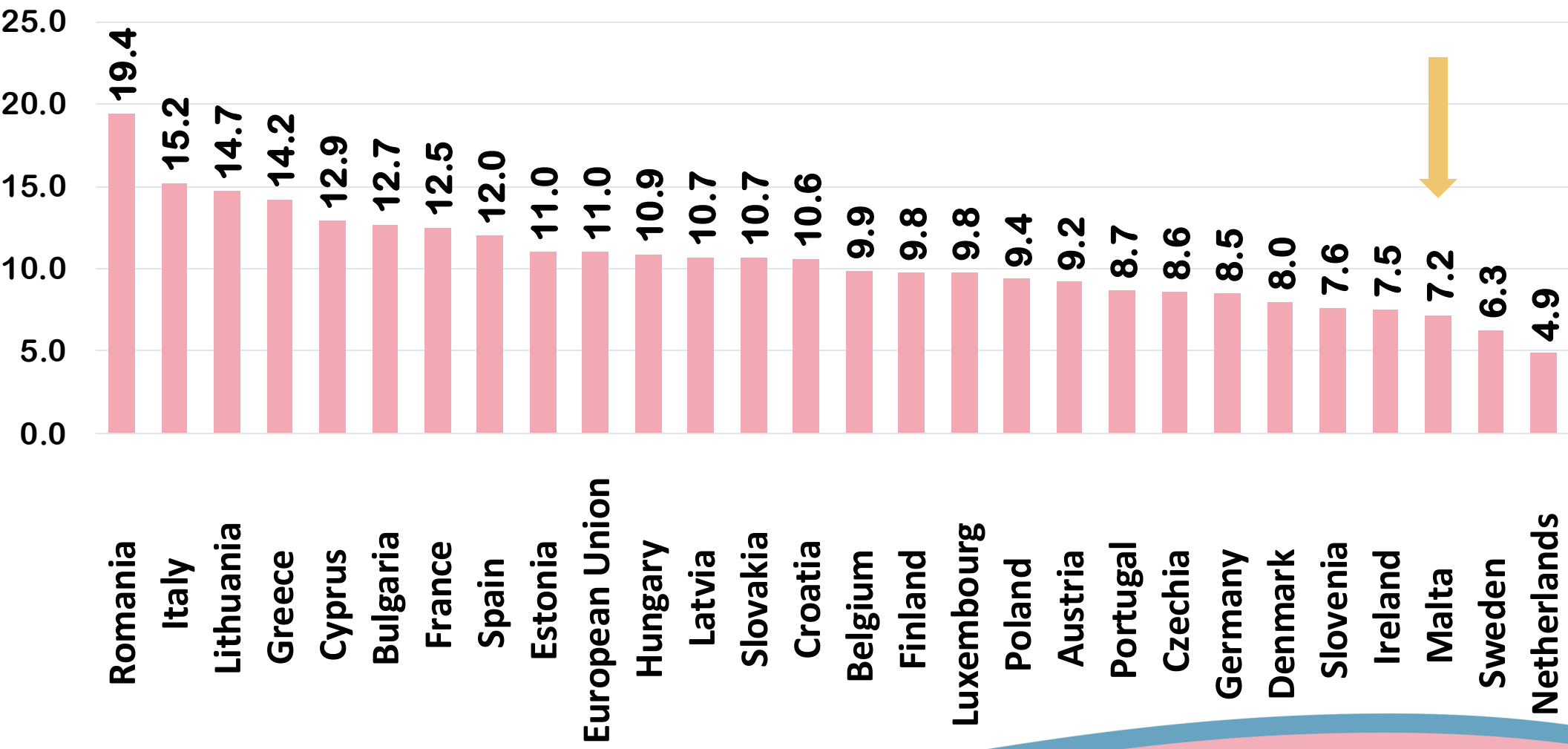
DEFINITION



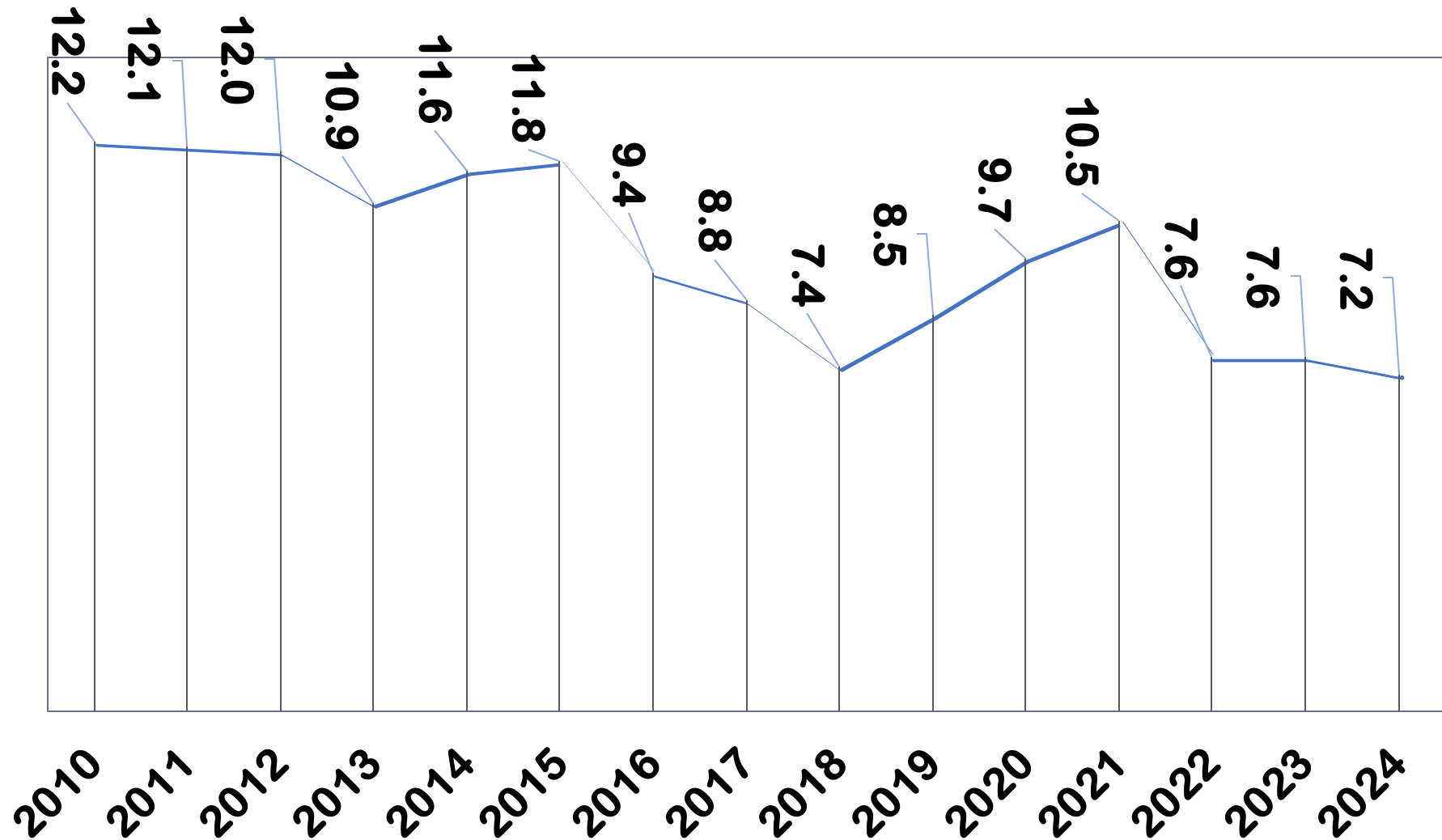
NEET is an acronym for '**not in employment, education or training**', used to refer to the situation of many young persons, aged between 15 and 29, in Europe. The aim of the NEET concept is to broaden understanding of the vulnerable status of young people and to better monitor their problematic access to the labour market.



EU MEMBER STATES' NEET RATES - 2024




MALTA'S NEET RATE 2010-2024



MALTA – ELET AND NEET MITIGATION MEASURES

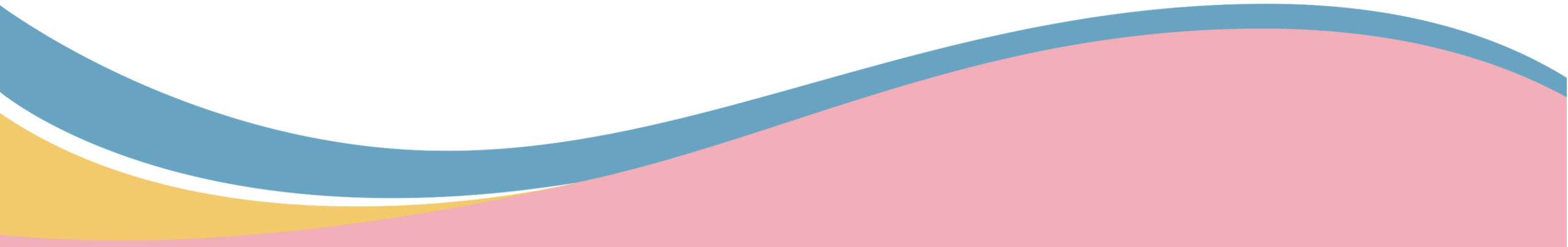


The graphic consists of three horizontal bars in yellow, pink, and blue, stacked vertically. Below these bars is a large wavy shape composed of three overlapping areas in blue, pink, and yellow, creating a dynamic, flowing effect at the bottom of the slide.



Malta has implemented a comprehensive approach to address the NEET issue, combining policy reforms, targeted programmes, and strategic partnerships.

The **Ministry for Education, Sport, Youth, Research and Innovation (MEYR)** is responsible for the provision of career guidance.



National Career Guidance Network – Malta

- **Launched on 24 April 2024** *‘Looking Beyond the European Year of Skills’*
- **Organised by:** Ministry for Education, Sport, Youth, Research and Innovation & the **National Skills Council**
- **Aim:** To build a cohesive and efficient career guidance system linking education and employment
- **Network includes:** Guidance offices from all institutions working together to provide a seamless user experience

•Steps:

- Consultations with education institutions, employers, and agencies
- Development of a national framework for lifelong guidance and career progression



•**CareerScape Events (8–9 May 2024):**

- Brought together guidance professionals & stakeholders from 13 sectors
- Focused on emerging careers, green & digital skills, and future work pathways

•**Upcoming:** National campaign on emerging careers to raise awareness and align skills with labour market needs

National Skills Council – Basic Skills Strategy (Malta)

•**Objective:** To address foundational skills gaps in literacy, numeracy, digital competencies, and life skills among adults, thereby reducing unemployment, poverty, and social exclusion.

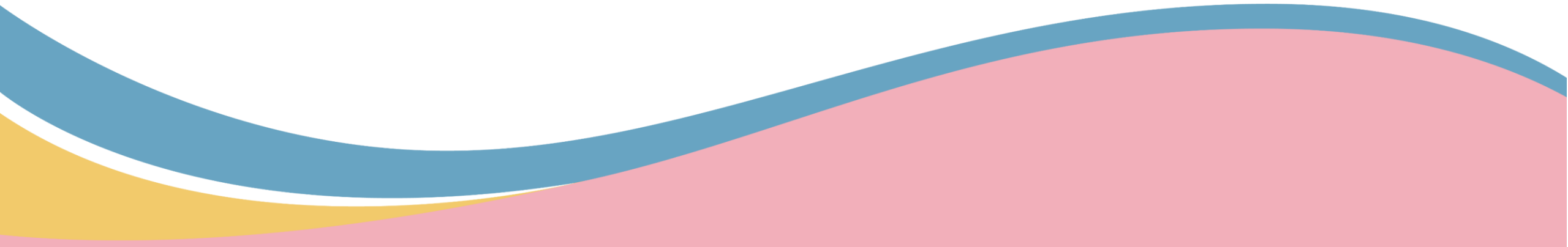
•**National Basic Skills Guidelines for Young Adults and Adults:**

- Development and adoption of comprehensive guidelines to standardize basic skills education across the country.

Second Chance Education Programmes in Malta

Provided through post-compulsory institutions to support re-entry into education and training

Key institutions involved:

- **Giovanni Curmi Higher Secondary School**
 - **GEM 16+** – Flexible paths for early school leavers
 - **Sir Michelangelo Refalo Sixth Form (Gozo)**
 - **MCAST** Malta College of Arts, Science and Technology – Foundation and introductory vocational courses
 - **Institute for Tourism Studies (ITS)** - Foundation and introductory vocational courses
 - **New Trade Institute** – Offering **micro-credentials** to support upskilling
 - The **Directorate for Lifelong Learning** offers courses for **young adults and adults**, supporting continued education
 - **JobsPlus** provides training programmes **linked to labour market needs**, helping individuals gain job-ready skills
- 

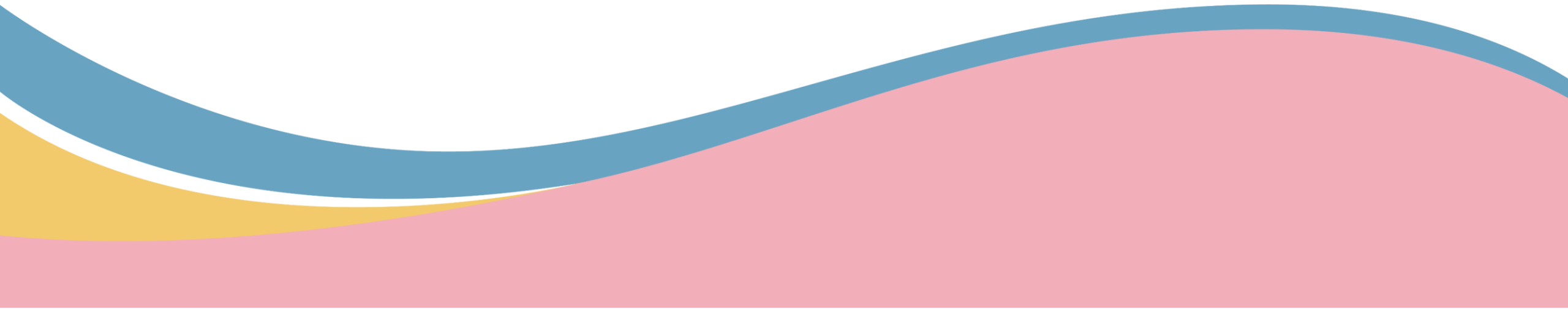
The National Youth Policy 2021–2030

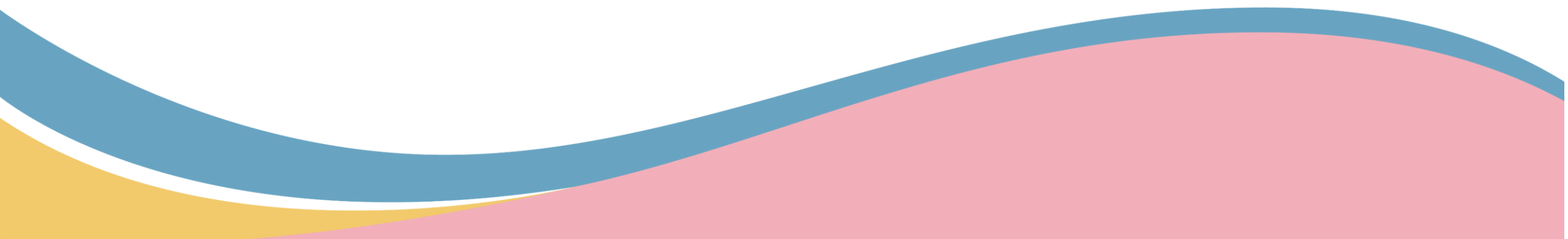
- The policy falls under the overarching responsibility of the [Parliamentary Secretariat for Youth, Research and Innovation](#) within MEYR.
- [Aġenzija Żgħażaġh](#), the [National Youth Agency](#), is responsible for the strategic planning and day-to-day operational matters related to youth policy.
- The agency is also responsible for promoting, coordinating and facilitating cross-sectoral initiatives. The implementation of the National Youth Policy is over the period 2021-2030, the implementation will be monitored on an ongoing basis.



Youth Guarantee Scheme

Administered by Jobsplus, this EU-funded initiative supports NEETs. Participants receive personalised guidance and access to training, apprenticeships, or job placements.

- Mobility programmes like **Alma** (Aim. Learn. Master. Achieve)
 - **SEC Revision Classes**
 - **Empower YOUTh** - a financial allowance up to €2000 during their training and on-the-job placement
- 

- **The Intercept Project (Jobsplus)** – The Intercept Project offers young individuals 25 hours of comprehensive training and a remarkable opportunity to embark on 240 hours of paid work placement in the green labour market.
 - **Youth Prop-Up Programme** - This programme connects NEETs with support services through a broad network of partners, offering individualised assistance without the need for personal data disclosure, ensuring accessibility for all young individuals. It is an ESF project 'Inclusion of youth at risk of social exclusion and improvement of youth employability'.
- 

EU-Funded Collaborative Projects

The **NEXT Project** (co-funded by the EU through the Citizens, Equality, Rights and Values (CERV) Programme).

The Malta Crafts Foundation is participating in **“NEXT – Young NEETs shaping EXpectations for The future of Europe”**.

- Partners from eight EU countries, including Malta.
- Engages NEETs aged 18–30 in discussions about their future, focusing on themes like gender equality and equal opportunities.
- Foresees nine transnational events combined with activities and workshops at a local level in each country.



EU-Funded Collaborative Projects

atWork4NEETs



- Focuses on data collection and analysis to identify and support NEETs, ensuring that interventions are tailored to the specific needs of different sub-groups within the NEET population.
- The atWork4NEETs partners engaged their stakeholders in a consultation through surveys, meetings, interviews and workshops.
- The data acquired is used for **The NEETs Census, outreach, and dissemination purposes**, aiding the NEET population with the services offered by Jobsplus.

Community Engagement and Support

The graphic consists of three horizontal bars of different colors (yellow, pink, and blue) stacked vertically. Below these bars is a large, wavy shape that fills the bottom half of the image. This shape is composed of three overlapping layers: a yellow layer at the bottom, a pink layer in the middle, and a blue layer at the top. The waves are smooth and flowing, creating a dynamic and modern look.

The Youth Employment Support Programme (YESP)



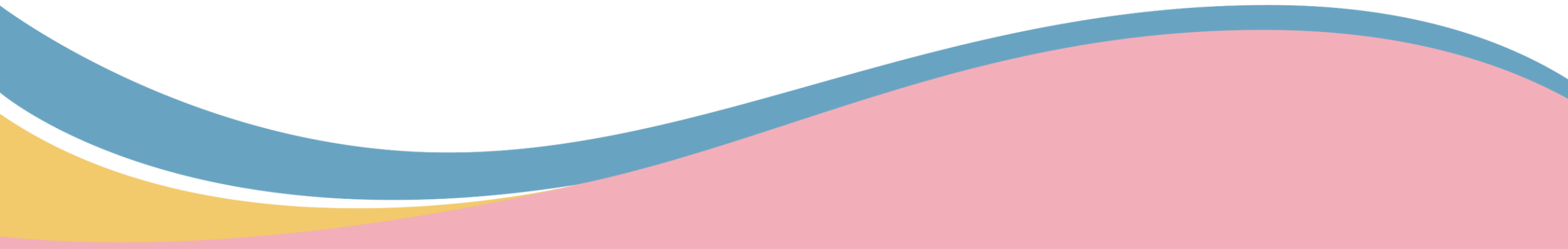
- Provides supported employment to young people (16 to 35 years) who had some type of disadvantage (poverty and social exclusion, mental health issues and out-of-home care) which limited their access to employment.
- Empowers jobseekers with relevant soft skills like job market awareness, CV writing, interview skills, time management and a sense of commitment.

Enhance (Malta Trust Foundation)



- An initiative that offers different scholarship opportunities to young people coming from a disadvantaged socio-economic background.
- The Malta Trust Foundation believes in inclusive education as a prerequisite for an inclusive society.
- Enhance seeks to break the cycle of poverty and inequity by supporting and empowering young people to reach their full potential through formal education.

MILESTONES & NEXT STEPS



MOVING FORWARD



Successful
implementation of
the FCSL Pilot
Programme

Host 'EduVoices' and
incorporate findings
into future strategies

Consolidate the Post-
Compulsory
Education Working
Group

Evaluate the FCSL
pilot in 2025-2026
and expand its
implementation

Embed data and
strategic foresight
into policy for
sustained reduction
of ELET and NEETS





GOVERNMENT OF MALTA
MINISTRY FOR EDUCATION,
SPORT, YOUTH, RESEARCH
AND INNOVATION

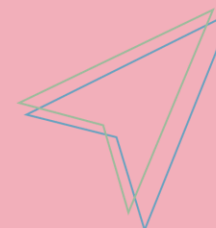


**NATIONAL
EDUCATION
STRATEGY**
2024 - 2030



ELET
EARLY LEAVING FROM
EDUCATION & TRAINING

THANK YOU



DIRECTORATE PLANNING
&
STRATEGIC FORESIGHT