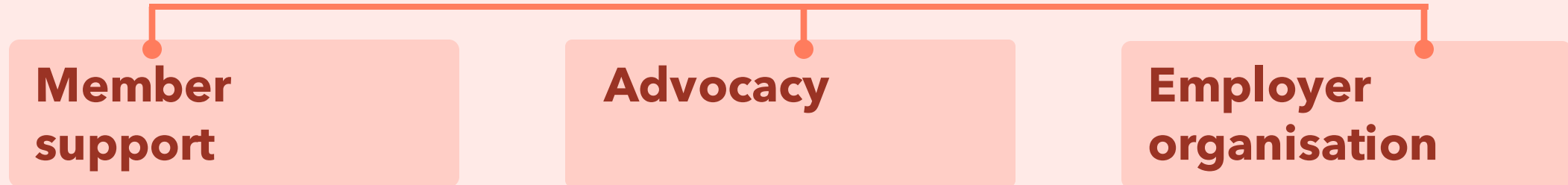


This is

**the Swedish Association
of Local Authorities and
Regions**

The Swedish Association of Local Authorities and Regions

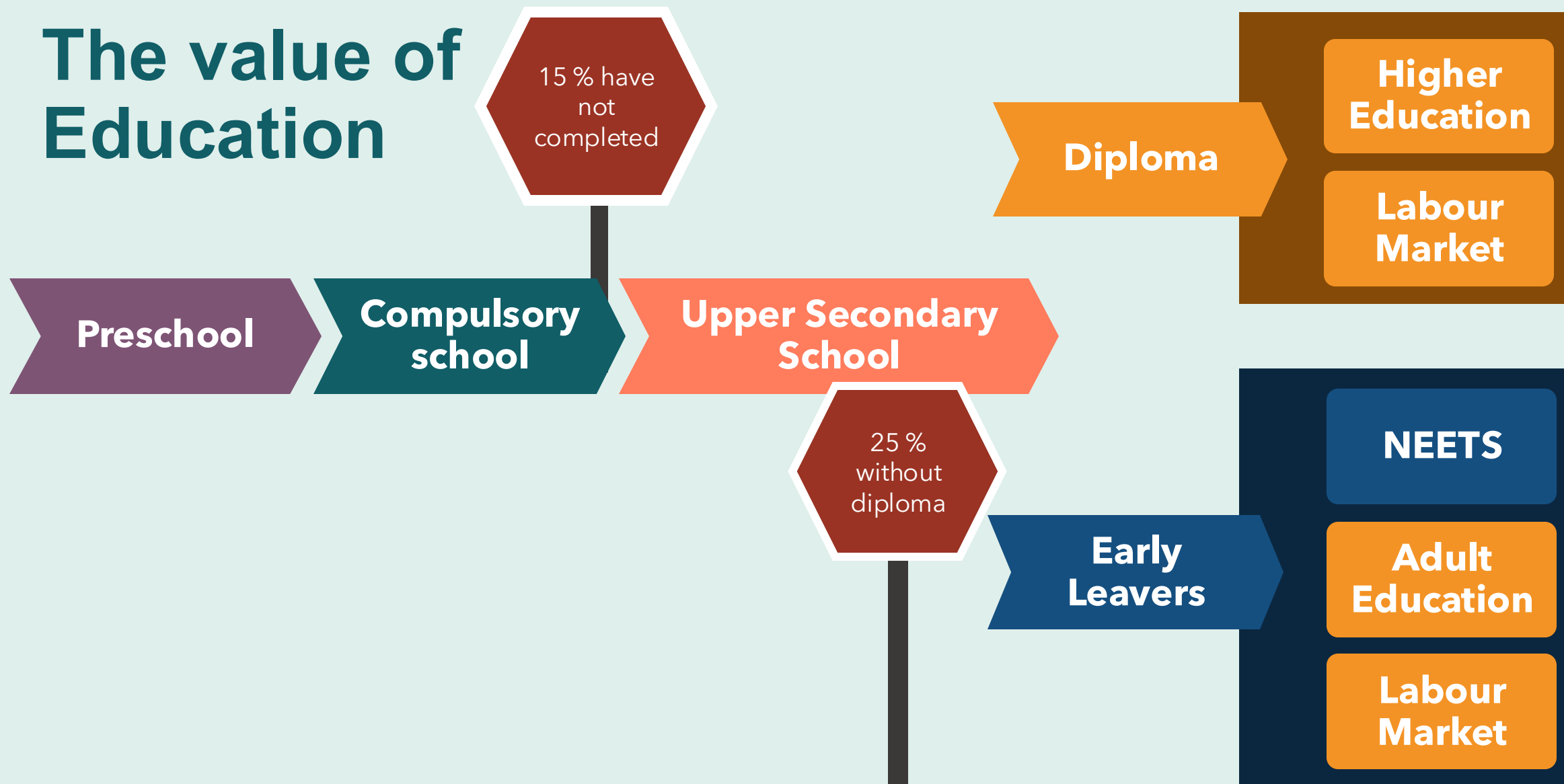


SALAR Initiative: Completed Education 2013-2025

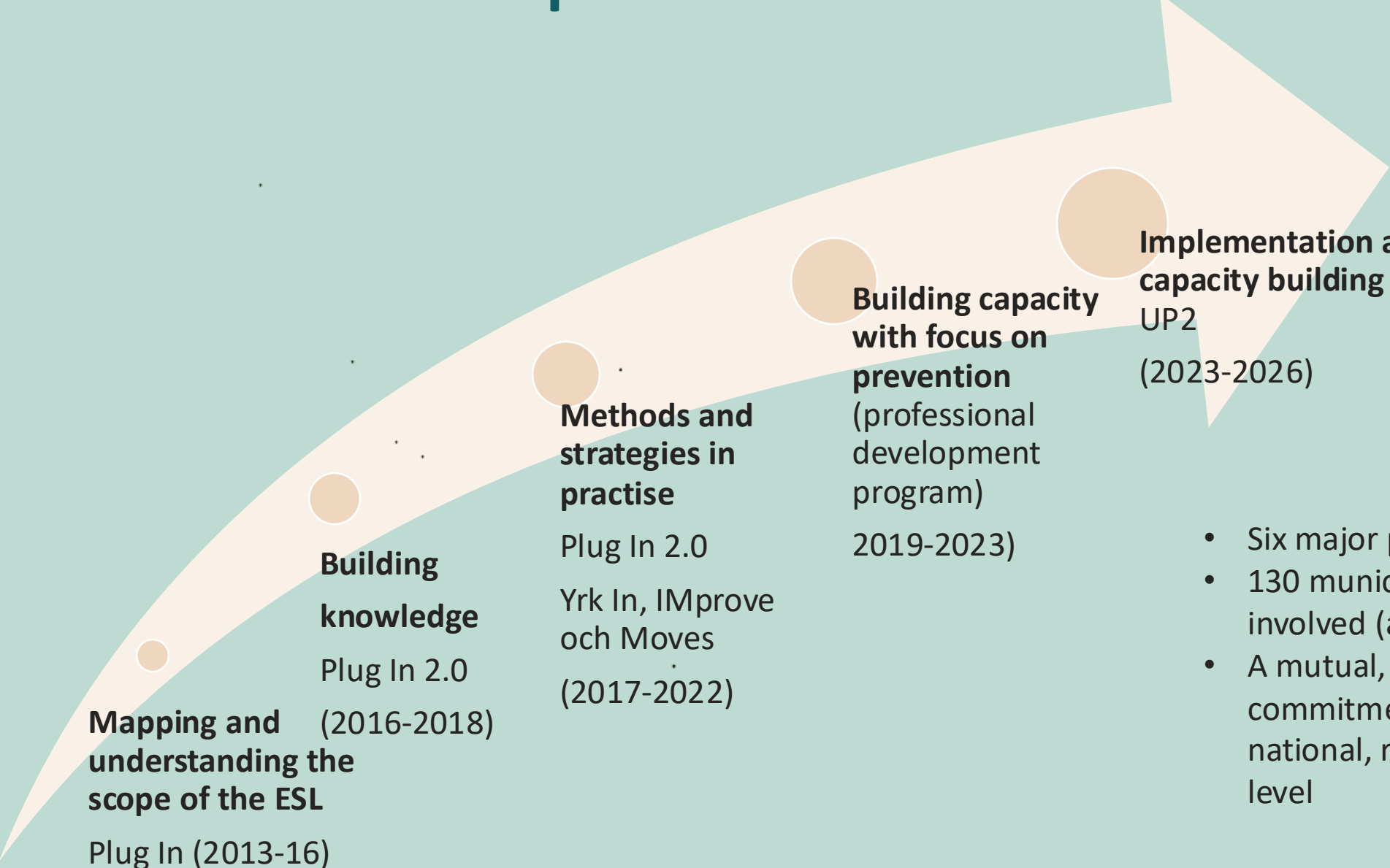
**Reducing early school
leaving
with a Multi-Level
Governance Approach**



The value of Education



SALAR Initiative: Completed Education 2013 - 2024



Mapping and understanding the scope of the ESL
Plug In (2013-16)

Building knowledge
Plug In 2.0
(2016-2018)

Methods and strategies in practise
Plug In 2.0
Yrk In, IMprove
och Moves
(2017-2022)

Building capacity with focus on prevention
(professional development program)
2019-2023)

Implementation an capacity building UP2
(2023-2026)

- Six major projects
- 130 municipalities have been involved (about 50% of total)
- A mutual, multi-level commitment and learning at national, regional and local level

Moving from interventions towards a whole school approach

- Coordinated efforts based on a holistic perspective of the student's needs.



Intensive interventions
individuals

- Broad range of interventions based on a holistic perspective of students' needs, with the support of school specialists.

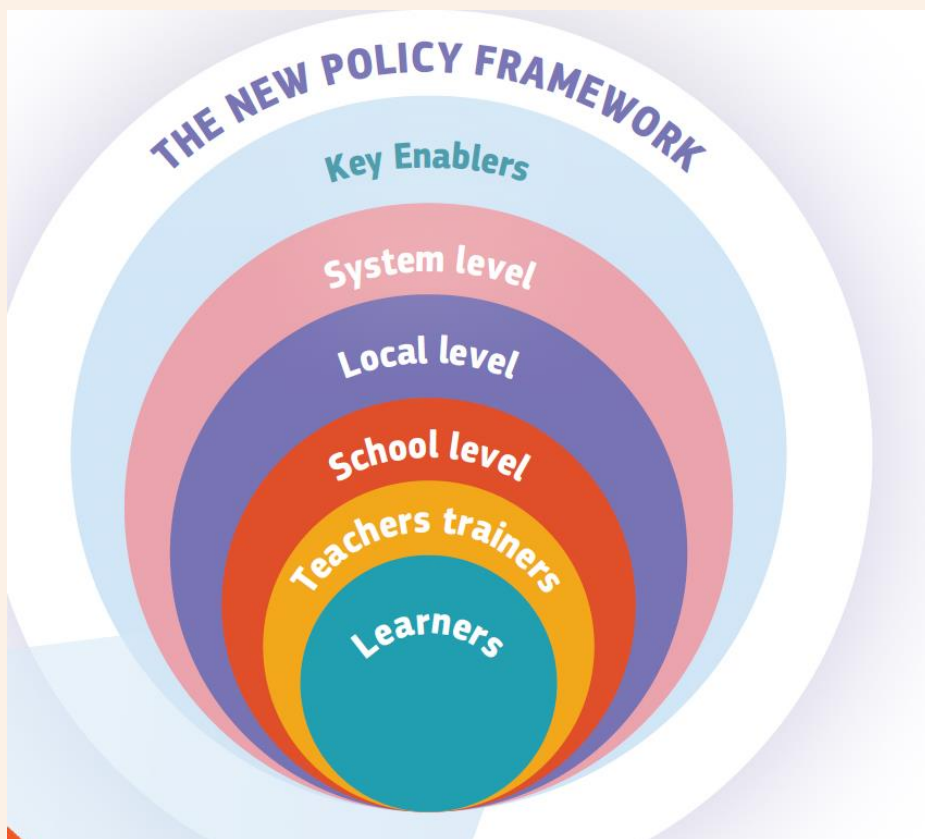
Interventions
groups or individuals

- Early Warning Systems(EWS) monitoring attendance, behaviors, course results and additional engagement indicators
- Safe and inclusive climate
- Study and career guidance
- Cooperation with caregivers and families

Universal stage
all students

(Adapted from systematic reviews eg Dale, 2010 and Mac Iver & Mac Iver, 2009)

Pathways to School Success: a Framework for Action



In 2022, the Ministries of education of the European Union adopted a Council Recommendation on Pathways to School Success, supported by a handbook.

The Recommendation aims to promote better educational outcomes for all learners, by lifting the performance of basic skills, reducing early leaving from education and training and promoting well-being at school.

<https://education.ec.europa.eu/education-levels/school-education/pathways-to-school-success>

Staying one step ahead!

Prevention is most effective. Early interventions can reduce suffering for the individual as well as costs for society.