

► What is Interreg Europe?

Interreg Europe helps regional and local governments across Europe to develop and deliver better policy. By creating an environment and opportunities for sharing solutions, the aim is to ensure that government investment, innovation and implementation efforts all lead to integrated and sustainable impact for people and place.

► Regional Policy Instruments

The European Union is working to reduce disparities in development and quality of life in European regions. Policy instruments include actions that helps European regions to be more innovative, more sustainable, and more inclusive; thus improving quality of life for its peoples and communities.

► Partners



CITTÀ METROPOLITANA DI CAGLIARI



CITY OF
VILNIUS



Comhairle Cathrach Chorcaí
Cork City Council



Cork
Environmental
Forum



VILNIUS



občina
LJUTOMER



RAZVOJNA AGENCIJA
SINERGIJA
DEVELOPMENT AGENCY



Stadt Leipzig



Tampere University



ITALIA
Italian ITS
Association



universidade
de aveiro

www.interregeurope.eu/embracer



Interreg
Europe



Co-funded by
the European Union

EMBRACER



EMBRACER (interconnecting MoBility acRoss europeAn CitiEs and subuRbs) is a region-driven project where seven underserved regions have committed to integrate public transport with informal modes (cycling, ride-hailing, car/bike/scooter sharing, on-demand transport, autonomous shuttles) to enhance the interconnection with urban areas and achieve seamless intelligent climate-resilient regional and local intermodal mobility.



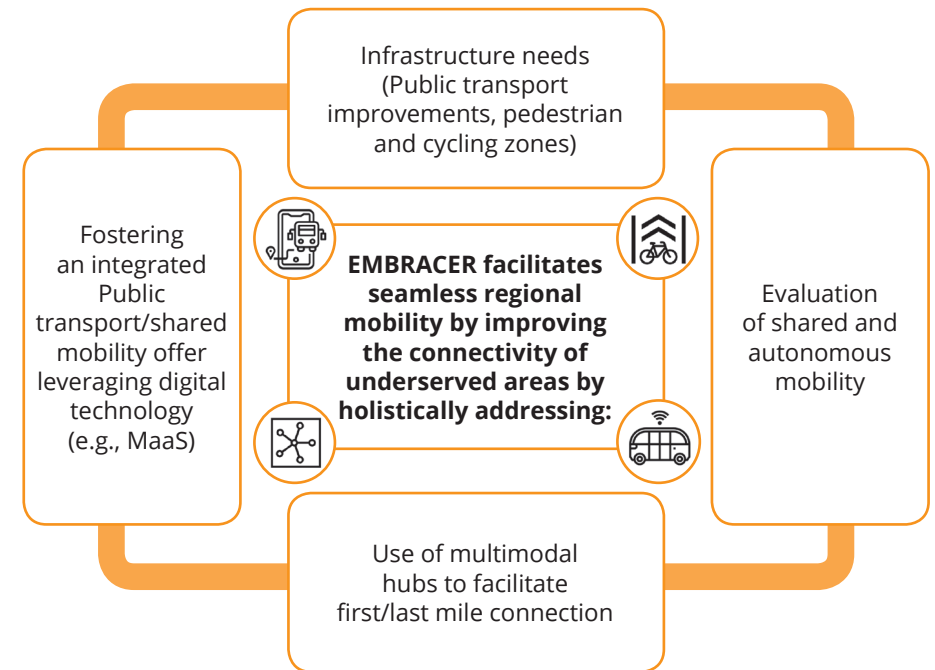
► EMBRACER main challenges

EMBRACER works towards Policy Instruments improvements and by 2026 the goal is to have new projects, improved management or structural change:

- *Integrated Strategy for Territorial Development of Coimbra Region 2021-2027*
- *Strategic Territorial Plan of the Metropolitan City of Cagliari*
- *Bucharest-Ilfov Regional Operational Programme Investment in Growth and Jobs ERDF 2021-2027*
- *Sustainable Urban Mobility Plan of the Municipality of Ljutomer*
- *Leipzig - City for Intelligent Mobility*
- *Sustainable Urban Mobility Plan for Vilnius*
- *Cork City Development Plan 2022-2028*

► EMBRACER objectives

European regions need a radical transition toward seamless intermodal mobility to motivate people to choose sustainable forms of travelling; moreover, underserved communities in peripheral and rural areas face a diverse range of mobility challenges; limitations in digital connectivity, transport infrastructure and services can in fact have significant social and economic consequences for communities in terms of reducing travel horizons and hindering access to opportunities such as employment, education and social activities.



The Interregional learning within **EMBRACER** will be facilitated by a structured cooperation process that fosters a multi-stakeholder co-creation approach to the identification of innovative multimodal mobility solutions (relating to planning, policies, digital technologies), which is further enriched by a pilot testing the viability of an autonomous shuttle service to interconnect with Public Transport and enhance travel in remote areas.