

**Interreg
Europe**



Co-funded by
the European Union



PROMOTER

Partner 7: Municipality of Sintra

Good practices/ Study Visit

8th February 2024

Doc. 4C-PR-35

Study Visit - Dates

We will shortly Welcome you
in Sintra!

04/03/2023 to 6/03/2024




PROMOTER

1ST STUDY VISIT



 4th - 6th of March

 Sintra, Portugal

With the support of

Sintra will host the 1st study visit of PROMOTER Project. The main goals are aligned with the following activities of the Project:

- Activity 2 – Definition and validation of the good practices template, considering a total of 18 good practices in the Project
- Activity 3 – Selection of the most relevant good practices and content validation in the context of 9 study visits

DAY 01 | AGENDA

4TH OF MARCH

14H00	REGISTRATION AND NETWORKING
14H30	SINTRA GREENING PLAN
15H15	REAVIVA FUNDING PROGRAMME
15H45	COFFEE BREAK
16H00	INTERMODAL SOCIAL MOBILITY FRAMEWORK IN SINTRA
16H30	I4EFFICIENCY PROJECT PRESENTATION
17H00	DEBATE AND CONCLUSIONS OF THE DAY
20H00	20H00 – JOINT DINNER

* Dinner covered by each partner



**Meetings on the 4th
and 6th of March in
Palácio Valenças**

DAY 02 | AGENDA

5TH OF MARCH

9H30	VISIT TO TABLAB (SMILE PROJECT)
11H30	MEETING WITH LOCAL STAKEHOLDERS AND PROJECT PARTNERS
12H30	LUNCH
14H00	PRESENTATION AND VISIT TO THE LOCATIONS RELATED TO "EIXO VERDE AZUL" (GREEN BLUE AXIS) *
16H30	VISIT TO MUSEU DA ÁGUA E RESÍDUOS - MAR (MUSEUM OF WATER AND WASTE)
20H00	JOINT DINNER **

* This visit considers a walk of around 3,5 km
An alternative will considered in case there are mobility concerns

** Dinner covered by Sintra Municipality



Venue

SMILE – Sintra Motion & Innovation for Low Emissions

It aims to implement significant improvements in the Bairro da Tabaqueira through the generation and use of renewable sources of electricity in buildings, sustainable urban mobility and circular economy practices.

Water and Waste Museum

This new museum is a point of reference in the areas of education and environmental awareness, as well as scientific and technological dissemination within the scope of the urban cycle of water and waste.



Travel in Sintra tram

DAY 03 | AGENDA

6TH OF MARCH

- 9H30 FINAL MEETING AND WORKSHOP WITH STAKEHOLDERS
- What were your main take outs on the good practices?
 - How did you benefit from the Study Visit?
 - Assessing the need for tutoring sessions from Sintra Municipality
 - Would you like to replicate some of the visited practices?
 - Q&A from the visited good practices

12H30 LUNCH

14H00 STEERING COMMITTEE MEETING (CLOSED SESSION)

16H00 CLOSING THE MEETING *

* If someone needs to leave earlier, please make sure at least one representative per partner stays in the meeting



Venue

Free afternoon for stakeholders

In case some of your stakeholders are interested in a Visit to Sintra Palaces or Quinta da Regaleira please let us know as the municipality can facilitate access to such monuments.



Good Practices



- Sintra Greening Plan / Plano de ecologização de Sintra
- Reaviva Funding programme
- Intermodal Social Mobility
- I4efficiency
- SMILE Project
- Green Blue Axis / Eixo Verde Azul

Good practices

Category 2. Behavioural / Organisational



Sintra Greening Plan – wil be presented by the team in charge, on the 4th of March

PEU-Sintra Plano de Ecologização Urbana/ Greening Plan is a municipal strategy that aims at creating a network of green spaces in the Municipality of Sintra

This plan wants to promote biodiversity in the urban environment and improve the life quality, directly and indirectly, for the population. It aims to create ecological refuges for nature, reduce urban pollution (air, sound, water). Protect against flooding and drought and contribute to re-establish the connection between humans and nature.

It will achieve it by analysing and characterising the territory, identifying existing green spaces and interruptions in the connection between those, and determining new areas that lack green spaces, and modifying existing square. It will also formulate new intervention proposals for these spaces.

It is currently under consultation with local actors such as local parishes and internal services.

Good practices

Category 1. Legislative



Reaviva Funding programme (<https://reaviva.sintra.pt/>) – **wil be presented by the team in charge, on the 4th of March**

As part of the urban regeneration actions that have been launched, namely through the systematic and simple delimitation of various Urban Rehabilitation Areas and the drawing up of the respective strategic programmes, the Municipality of Sintra **intends to encourage a management and intervention model in the territory that values urban regeneration and the revitalisation of areas considered to be priorities**, particularly with regard to the rehabilitation of the built-up area, in conjunction with the requalification of the public space.

To this end, the **ReaVIVA Sintra Regulation** was implemented – A Programme to subsidise works on properties in ARU's (Urban rehabilitation areas).

The number of applications has been growing and is now at a total of **190 applications. From those, 99 were approved.**

Good practices

Category 1. Legislative



Reaviva Funding programme

The municipality supports up to 30.000 € the interventions that promote the following:

- Energy efficiency
- Mobility and social inclusion
- Rehabilitation of common areas

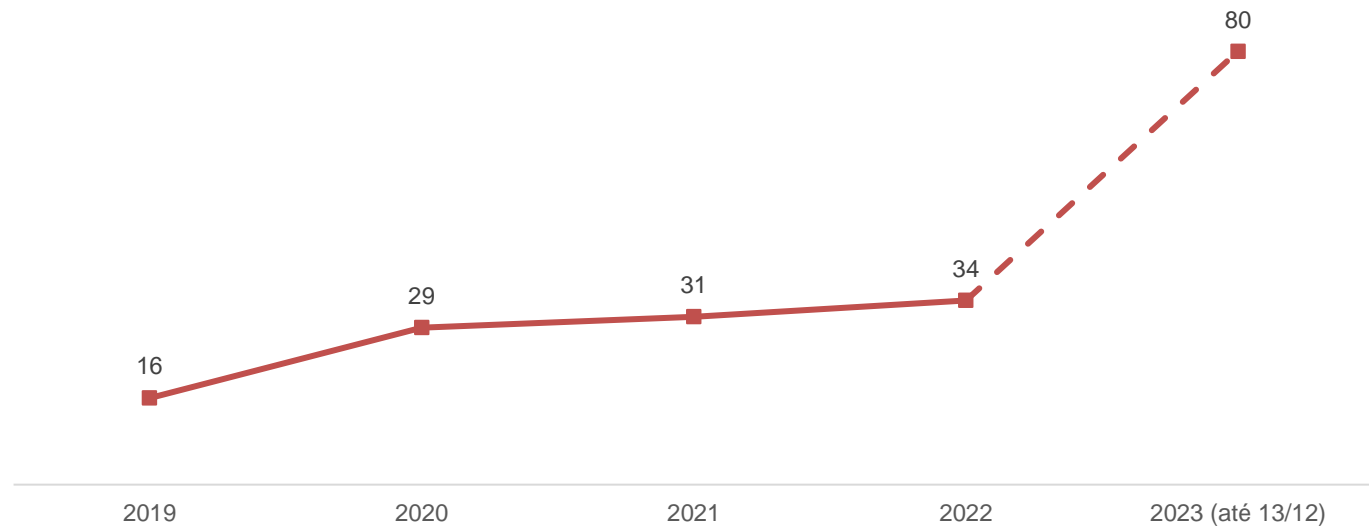
Good practices

Category 1. Legislative



Reaviva Funding programme

Applications received, per year



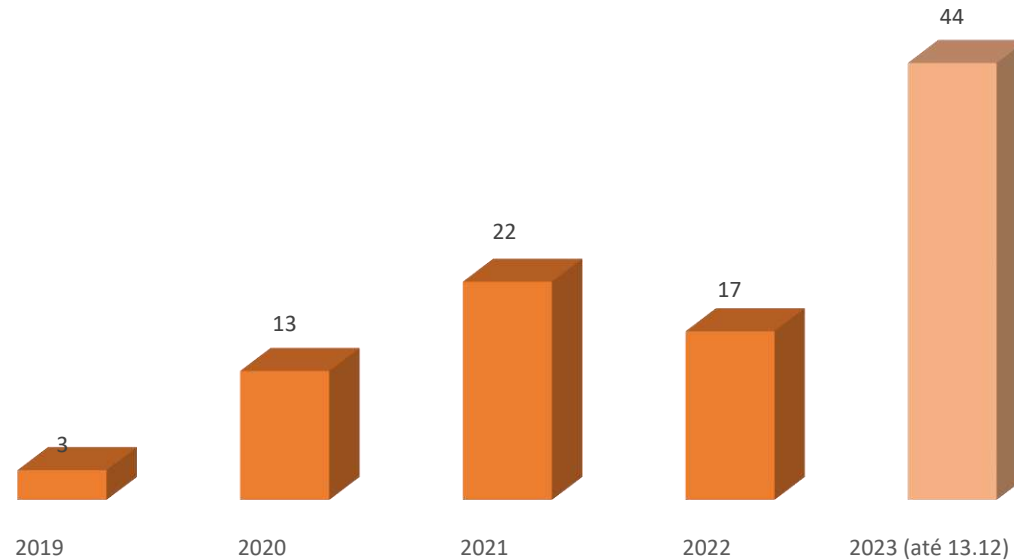
Good practices

Category 1. Legislative



Reaviva Funding programme

Applications approved per year

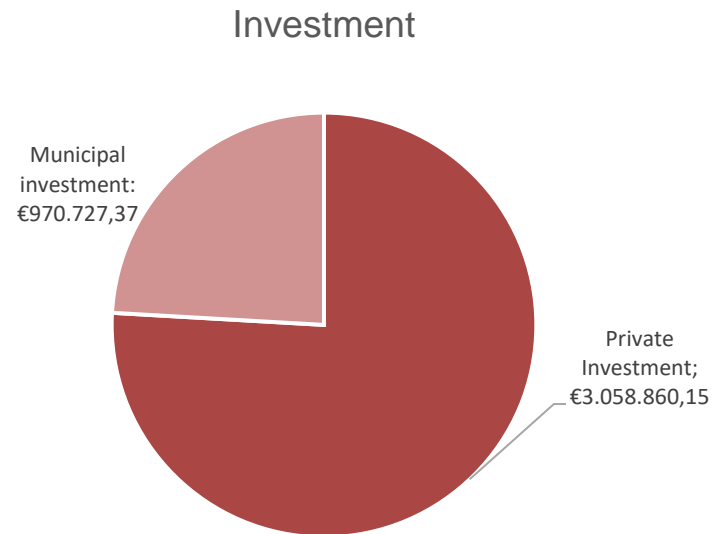


Good practices

Category 1. Legislative



Reaviva Funding programme



Number of houses covered: 1326

Good practices

Category 1. Legislative



Intermodal Social Mobility – **wil be presented on the 4th of March**

In April 2019, the biggest fare change in recent years was established in the Lisbon metropolitan area. The new Navegante passes represented a substantial price reduction compared to the prices that had previously been charged along with reformulating fleets and routes previously established to connect the metropolitan area under one service.

Since April 2019, 19 new passes have been available: one Navegante Metropolitano pass and 18 Navegante Municipal passes (one for each municipality).

The Navegante Metropolitano pass allows you to use all regular public passenger transport services in all 18 municipalities in the Lisbon metropolitan area.

It costs 40 euros and is valid monthly, i.e. from the first to the last day of the month for which it was purchased. The Navegante Metropolitano has the Navegante 12 variant, with the same characteristics as the Navegante Metropolitano. It allows you to use all regular public passenger transport services free of charge in all 18 municipalities in the Lisbon metropolitan area. Navegante 12 is **free for all children up to and including the age of 12.**

Good practices

Category 1. Legislative



Intermodal Social Mobility

Navegante Metropolitano also has the +65 variant, which is aimed at the over-65s, pensioners and retired people, and allows you to use all regular public passenger transport services in all 18 municipalities in the Lisbon metropolitan area. It costs 20 euros and is valid monthly.

The Navegante Metropolitano Família has the same characteristics as the Navegante Metropolitano, and allows each household to **pay a maximum of two Navegante Metropolitano passes, or 80 euros**, regardless of the number of members in the household.

It is valid on all regular public passenger transport services in all 18 municipalities in the Lisbon metropolitan area.

Good practices

Category 4. Technological



I4efficiency (<https://iue.pt/en/>) - will be presented on the 4th of March by the coordinator of the project

The project funded by EEA Grants programme focuses on promoting efficiency of urban logistics services which include operations such as the delivery and collection of goods, waste processing and also services involving couriers, such as utility meter readings.

The project proposes an integrated approach, comprising several intelligent logistics solutions. The two pilots are located in the following parishes: União de Freguesias de Sintra and União de Freguesias de Massamá e Monte Abraão.



Good practices

Category 4. Technological



I4efficiency

The project proposes an integrated approach, including various intelligent logistics solutions, based on collaboration and sharing, which optimise the number of vehicles and resources needed for operations.

The project is therefore based on 3 integrated core elements:

1. A digital solution that allows all urban logistics processes to be orchestrated and managed in an optimised way.
2. The development of a Unique Address Identifier (UEI), a code that unequivocally identifies a physical address, promoting increased effectiveness and efficiency in logistics activity.
3. Implementation of a combination of complementary initiatives at the level of living labs that will maximise the impact of the platform and the UDI

Good practices

Category 4. Technological



Efficiency

The project is expected to have the following impacts:

- **Estimated annual reduction in CO₂ emissions:** 2,076 tonnes/year;
- **Reduction in kms travelled by vehicles involved in urban logistics operations in living laboratories:** 13% to 16%
- **Increase in vehicle occupancy rate for last mile deliveries:** occupancy rate of over 70 per cent
- **Number of jobs created:** 11 jobs;
- **Number of people benefiting from the implementation of mitigation/decarbonisation measures:** 24,722 beneficiaries of the pilot urban logistics services;
- **Number of innovative mitigation/decarbonisation measures supported:** 5.

Good practices

Category 2. Behavioural / Organisational



SMILE: Sintra Motion and Innovation for Low Emissions – *Visit to the project on the 5th of march*

Project funded by EEA Grants programme. A partnership promoting activities on energy efficiency, buildings, mobility, circular economy and engaging with the community. The living lab is located in Bairro da Tabaqueira.

Iceland
Liechtenstein
Norway grants

SMILE

Sintra Motion & Innovation
for Low Emissions



Economia Circular
e Ambiente



Energia e
Edifícios



Mobilidade urbana
sustentável



Comunidade,
Arte e Cultura



● **Operator of the programme**



● **Coordinator**



● **Public authority**



● **Donnor country**



● **Implementation Partners**



Goals of the project

May 2021



April 2024

- To test integrated technologic solutions that increase efficiency and reduce energy consumption and overall resources
- To mitigate CO₂ emissions through the active involvement of citizens, companies, public authorities and universities
- To promote significant improvement in Bairro da atabqueira through the use of alternative sources of energy, more sustainable mobility and circular economy based solutions





PROJECT ACTIVITIES

— Circular economy and environment

- **Community** Urban **Garden**
- **Collection system for rainwater**
- **Composting** goes to school
- **Repair Café and Bike Workshop**
- **Intelligent** Automatic Irrigation **System**
- Waste **management system**



PROJECT ACTIVITIES

Sustainable urban transport

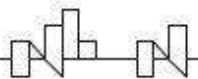
- **Electric Minishuttle** on a flexible/"on-demand" basis for people, goods and small goods
- **Bicycle sharing** and electric charging station
- **Safe parking** for bicycles

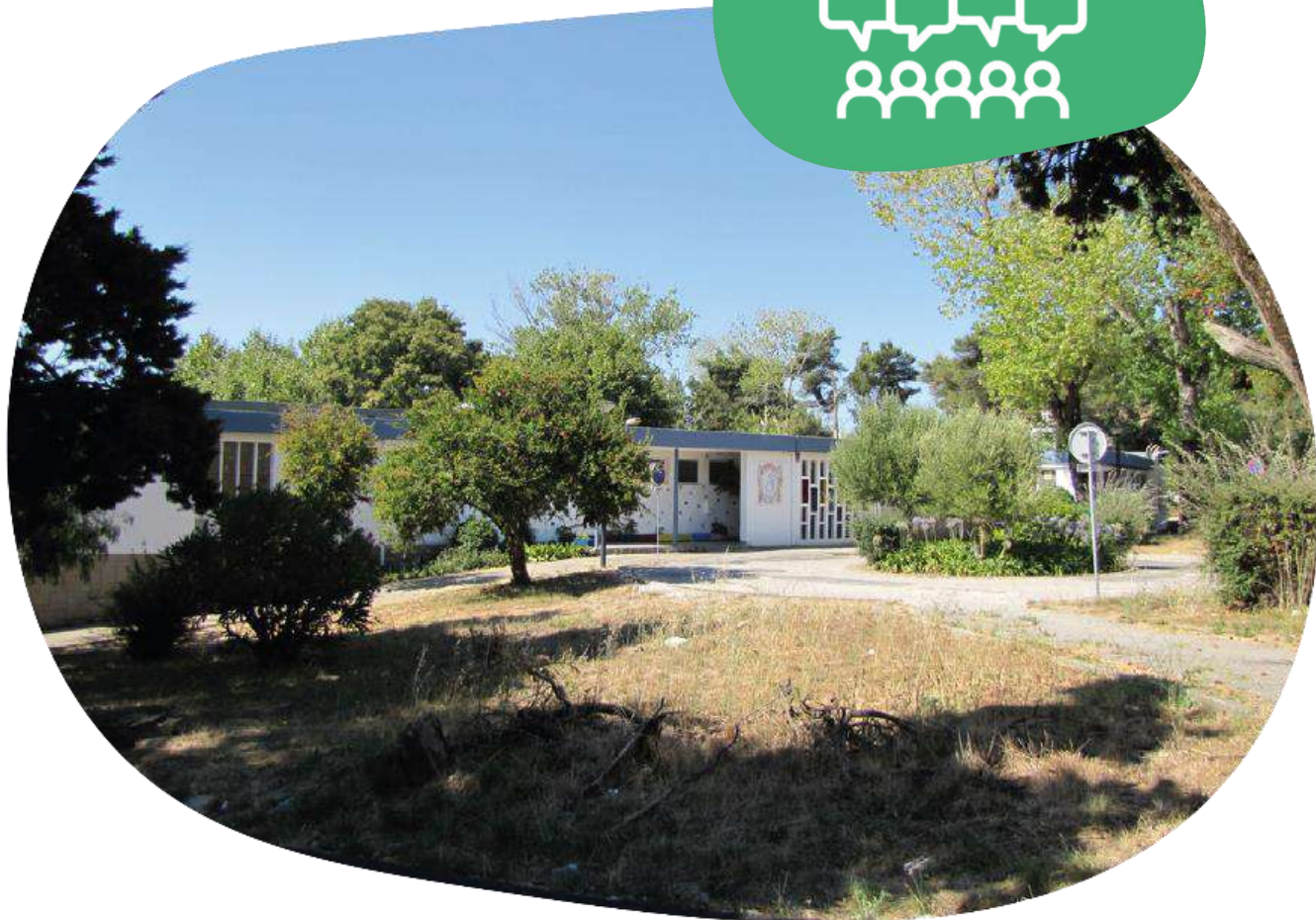


PROJECT ACTIVITIES

Energy and Buildings

- Installation and maintenance of a **renewable energy community**
- Monitoring
- Application based on artificial intelligence and community involvement to fight **energy poverty**
- Promoting a group of **citizen-scientists** for energy efficiency
- **Energy Literacy** Programme

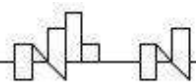




PROJECT ACTIVITIES

Transversal activities

- **SintraSMILE**
- Steering Committee
- Community Assemblies
- Urban Art
- Living Lab management platform



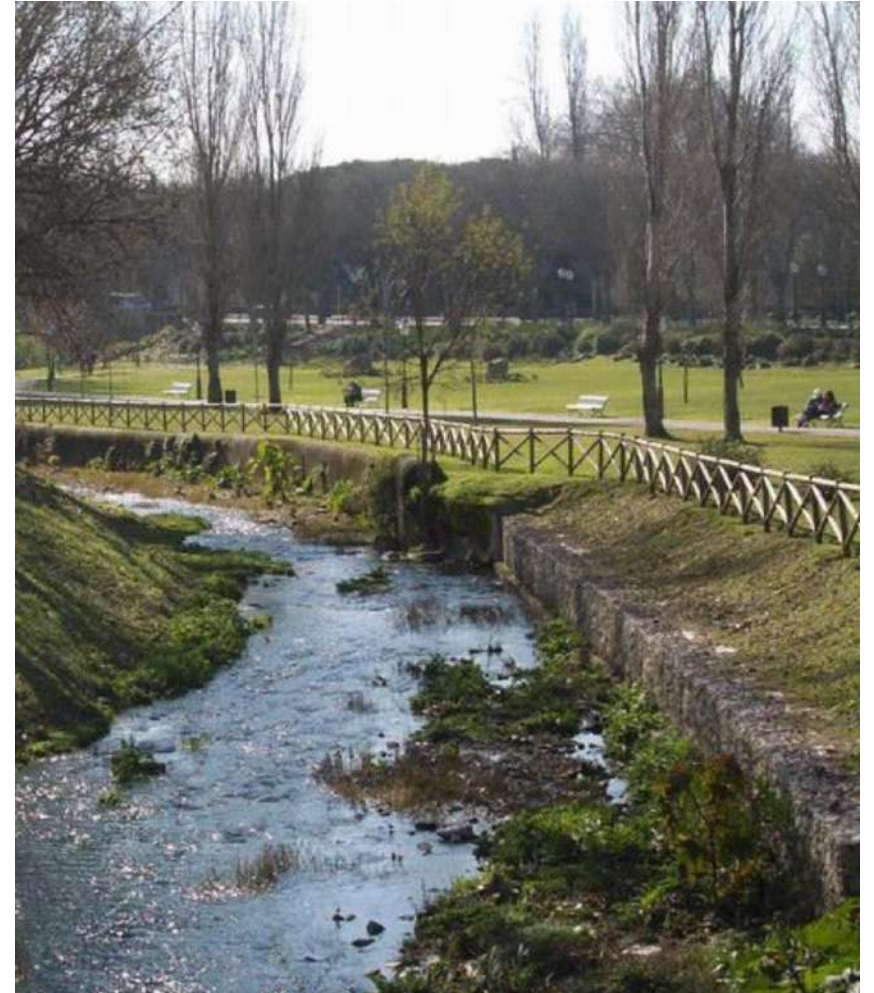
Good practices

Category 5. Operation Scope and Environment

Green Blue Axis – *To be visited on a walk on the 5th of march*

The goal was to create an ecological and soft mobility corridor along the River Jamor stretching for more than 16 km, from the river's source in the Serra da Carregueira to its estuary in Caxias.

The Green and Blue Axis reflects a vision of the territory supported by multifunctional corridors. Corridors for the circulation of water, nature and people, in everyday life and leisure. This route intersects major transport links: the Sintra and Cascais lines, the IC-19 and the A-5. Access to railway lines reinforces sustainable mobility by connecting people to a high-value architectural and scenic heritage.



Good practices

Category 5. Operation Scope and Environment

Green Blue Axis

The Green and Blue Axis includes a set of actions aimed at promoting the improvement of the water quality and its tributaries and ensuring the control of water flows, with a view to the safety of people and goods in areas currently at risk of flooding.

It also enables easier access of the population to the enjoyment of Nature and Heritage, through the creation of green spaces and a soft mobility circuit.

The Green and Blue Axis is a joint project involving the municipalities of Sintra, Oeiras, Amadora and Parques de Sintra Monte da Lua.



Good practices

Green Blue Axis

HIDROGRAPHY



MUNICIPALITIES



FREEWAYS AND RAILROADS



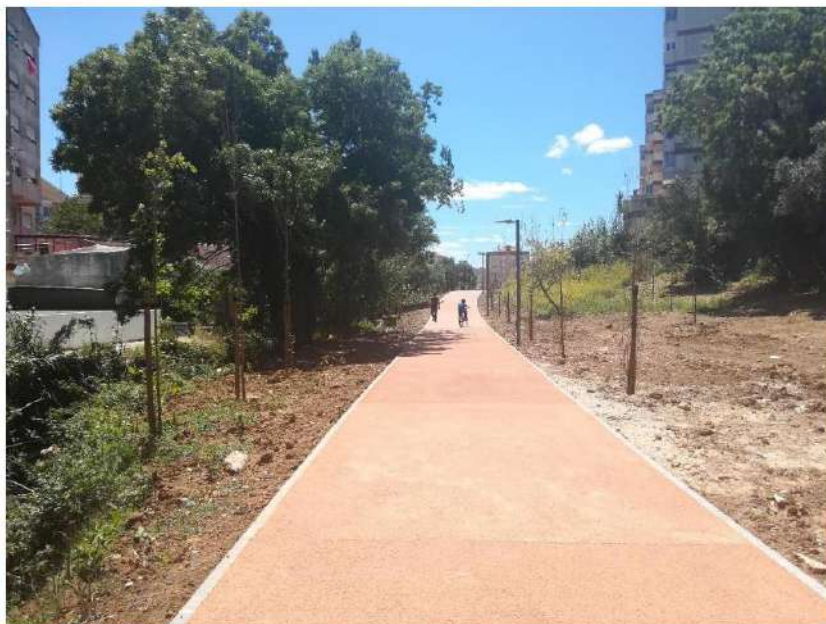
Good practices

Green Blue Axis



Good practices

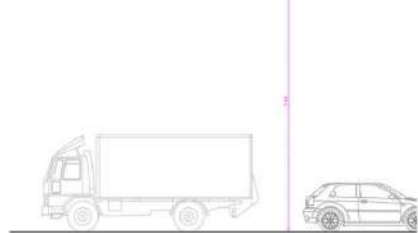
Green Blue Axis



Good practices

Green Blue Axis

Queluz Green bridge



IC19
◀ SINTRA LISBOA ▶



The Green Blue Axis



Good practices

Green Blue Axis

Queluz's Woods



BIODESIGN, Ambiente e Paisagem, Lda.

Good practices

Green Blue Axis

New green spaces (ha):

Existing	New	Total
50,3	43,4	93,7

86% increase in green area equipped and formally open to the public, surrounding the Queluz Nacional Palace

Good practices

Green Blue Axis

STRUCTURING PROJECTS

LANDSCAPE AND ENVIRONMENTAL ENHANCEMENT OF JAMOR RIVER

New routes (ml):

Sintra	Oeiras	total
7.350	7.450	14.800

Treated water lines (ml):

Sintra	Oeiras	total
7.250	6.850	14.100

(Note: Oeiras, includes Complexo Desportivo do Jamor)

Thank you!

Pedro Flores

pedro.flores@cm-sintra.pt

Elsa Nunes

elsa.nunes@irradiare.com

Flávia Duarte

www.interregeurope.eu/PROMOTER