

**Interreg  
Europe**



European Union | European Regional Development Fund



# Implementing S3

*The implementation of a sub-regional S3 aligned to the RIS3  
Leire Seara Izagirre  
Leartibai Foundation*

## Online Workshop

16 March 2022 | Online





# 1. Policy instrument and S3

**POLICY INSTRUMENT:** COUNTY-LEVEL COMPETITIVENESS STRATEGY OF THE DEPARTMENT OF ECONOMIC PROMOTION OF BIZKAIA PROVINCIAL COUNCIL (NUTS 3)

**CHALLENGE:** To advance towards a competitive and territorially-balanced Bizkaia, based on a collaborative, multi-level governance model.

## BIZKAIA AT BALANCE.

- Improving the implementation of the regional S3 by adding a horizontal territorial-based approach to the vertical cluster-based approach
- This demands a further coordination between the vertical (sector-based) and horizontal (territorial) levels.

## BIZKAIA S3

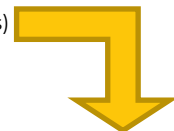
### TRASVERSAL PRIORITIES

- Increasing advanced/innovative entrepreneurship
- Fostering SME innovation, internationalisation & advanced investments
- Foreign investment attraction
- Development of future talent & skills

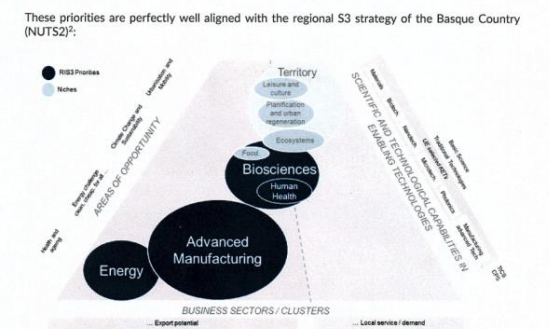
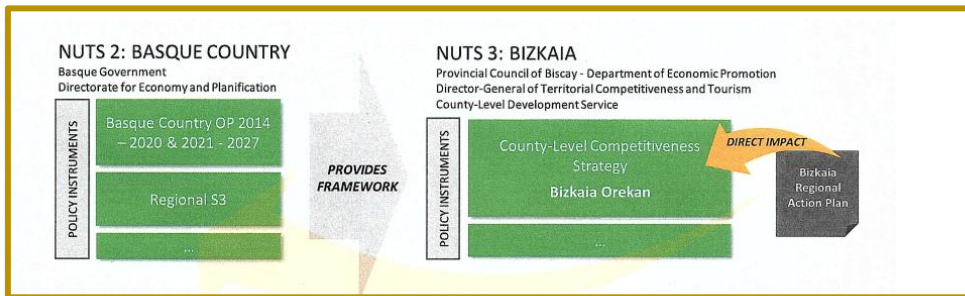
### SECTOR-SPECIFIC PRIORITIES

- Automotive & Aeronautics
- Metal-mechanics industry (supporting activities)
- Health & biosciences
- Fintech
- Design & creative industries
- Tourism

- **Promoters**  *Bizkaia* *Bizkaia*  
foru aldundia diputación foral beaz
- **Recipient/ Players: 24 local economic promotion agents** 
- **Advisory partners:**
  -  ORKESTRA, Basque Institute of Competitiveness,
  -  INNOBASQUE, Basque Innovation Agency
  -  Cluster Energia
  -  Cluster Associations of priority sectors, BASQUE ENERGY CLUSTER and BASQUE AUTOMOTIVE CLUSTER



## RIS 3



We are indirectly improving the implementation of the Regional S3 and the policy instrument by the ERDF OP 2014-2020 and the 2021-2027 of the Basque Country



## 2. Design a sub regional s3

The good practice consists of designing a **sub regional (supra-municipal) S3 based** on 4 key areas:





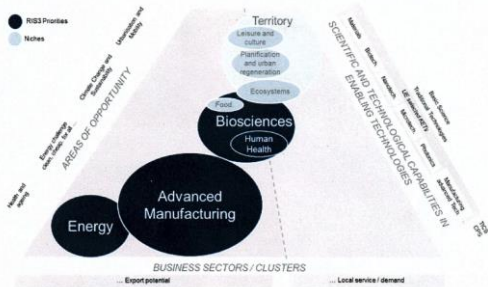
# 2. Design a sub regional s3

## LEA ARTIBAI BIO BERDEA- 4 STRATEGIC AREAS

Lea Artibai **Bioberdea**

### REGIONAL S3 (BASQUE GOVERNMENT)

These priorities are perfectly well aligned with the regional S3 strategy of the Basque Country (NUTS2):



### PROVINCIAL S3 (PROVINCIAL COUNCIL OF BIZKAIA)

#### TRASVERSAL PRIORITIES

- Increasing advanced/innovative entrepreneurship
- Fostering SME innovation, internationalisation & advanced investments
- Foreign investment attraction
- Development of future talent & skills

#### SECTOR-SPECIFIC PRIORITIES

- Automotive & Aeronautics
- Metal-mechanics industry (supporting activities)
- Health & biosciences
- Fintech
- Design & creative industries
- Tourism



aclima



Leartiker  
MEMBER OF BASQUE RESEARCH & TECHNOLOGY ALLIANCE

Euskadiko Elikaduraren Clusterra  
Basque Food Cluster

Leartiker  
MEMBER OF BASQUE RESEARCH & TECHNOLOGY ALLIANCE

BASQUE HEALTHCLUSTER

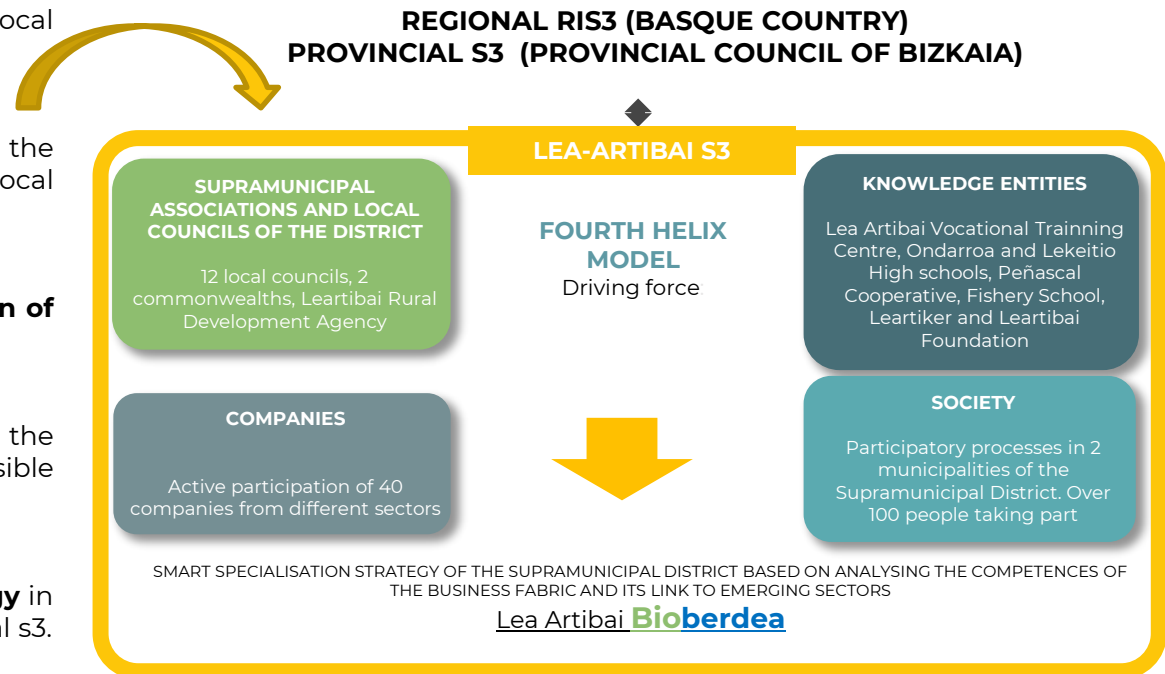
BASQUE TOUR  
turismoaren euskal agentzia  
agencia vasca de turismo



# 2. Design a sub regional s3

## THE PROCESS

1. **Agreement** by the innovation agents to design a common strategic plan for local development.
2. **Definition of a participatory process** for the design of the strategic plan for local development.
3. Implementation of the process and **design of the strategic plan** for local development.
4. Definition of the **governance model** of the strategic plan, where each agent is responsible for the challenges that correspond to it.
5. Design of the **smart specialisation strategy** in line with the strategic plan and the regional s3.
6. Each agent carries out the **deployment of the strategic plan and the s3**, integrating the challenges defined in its own strategic plan.





# 3. Recommendations

In order to **improve the deployment of the Regional S3** in a cohesive and territorially-balanced way, by **integrating the territorial dimension into S3 governance together with the cluster-based approach**, we recommend to:

## REGIONAL OR PROVINCIAL GOVERNMENT

**Empowering the local economic development agent in the deployment of RIS3 by:**

1. Involve local economic promotion agents
2. Provide local economic promotion agents with methodologies
3. Provide the local economic promotion agents with funds
4. Create collaborative spaces for reflection
5. Create an effective system to measure the results

## LOCAL AGENT FOR ECONOMIC PROMOTION

**Keys to defining a subregional s3**

1. Define a clear Territorial Governance Model.
2. Design a participatory process
3. Duly embrace the Common Project
4. Design and offering value-added services and create working groups with businesses
5. Appoint a leader who promotes the sub-regional S3
6. Participate in working groups outside the sub-provincial area