

[View this email in your browser](#)



### **InnoHEIs continues!**

Due to the pandemic the physical partnership meetings, stakeholder meetings and site visits have been cancelled this semester. However, most of the meetings that were scheduled have been taken place online! Indeed, interesting ideas, good practices, innovations and developments can still be exchanged with our partners. Some of the scheduled site visits have been postponed to coming semesters.

Read all about these diverse meetings in this 5th newsletter!

---

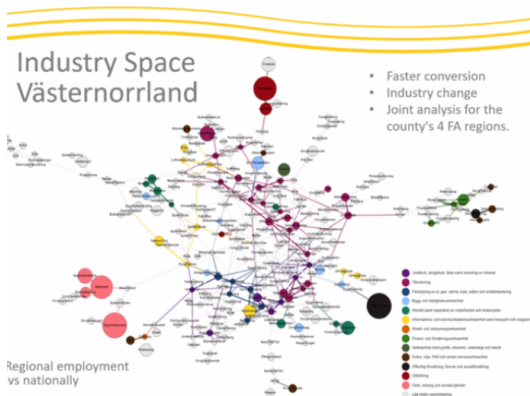
### **Partner meeting in Sweden**

On the 19-20th of January a [partner meeting was hosted by the Swedish partner Mid Sweden University in the region of Middle Norrland](#). There were about 45 participants from stakeholders in the region as well as representatives from partners from all seven countries. Mid Sweden University's role in regional development was in focus when a large number of experts, partners in InnoHEIs gathered for a digital conference. The InnoHEIs project involves a screening of the Mid Sweden University's collaborative work linked to the European Development Fund.



**Gaps identified in Middle Norrland  
Conclusions 1:**

- 1 The innovation system of the Middle Norrland region is atomized or filled with gaps. The different innovation support and policy making agencies are not necessarily coordinated.
- 2 Many stand-alone actors who are by themselves creating value but they are not integrated into a common ecosystem strengths.



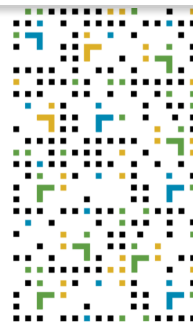
**InnoHEIs impact workshop**

During the [project meeting organised by Tampere University of Applied Sciences in May 2021](#), there was special interest from InnoHEIs partners to [discuss the topic of Impact measurement](#) further. Therefore, Hanze University of Applied Sciences, Mid Sweden University and Tampere University of Applied Sciences, cooperated in November 2021 to develop this workshop to give InnoHEIs partners the opportunity to discuss impact more in depth.

*picture: unsplash*

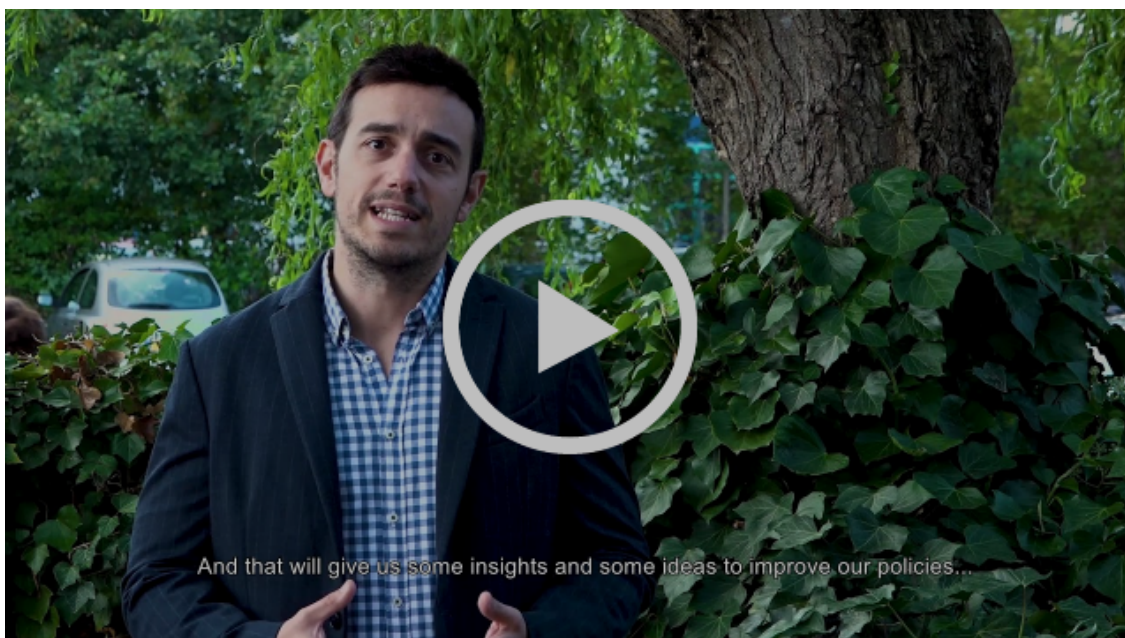
## Design workshop

On October 11, 2021, the Marshal's Office of the Silesian Voivodeship, together with the Central Mining Institute, organized a workshop meeting entitled: [key research infrastructure, european and regional dimension](#). Addressed to enterprises, business support institutions, research institutes, universities and research organizations. In total, 32 people participated in this successful meeting.



## Innowacji Województwa Śląskiego RIS WSL 2030

- integruje wewnętrzny potencjał w zakresie polityki innowacyjnej
- nadaje kierunek rozwoju
- wskazuje kluczowe i konkurencyjne obszary wzrostu: inteligentne specjalizacje w procesie przedsiębiorczego odkrywania (PPO)



## Watch the InnoHEIs video!

During the kick off meeting in Groningen in the Netherlands the project partners shared what InnoHEIs will mean for their regions.

## About the project

### **InnoHEIs: Improving Research and Innovation Infrastructure Performance - From Fragmented to Integrated and Sustainable Cooperation.**

Eleven partners work together on enlarging the role of higher education institutions (HEIs) and their research and innovation infrastructure in European regions. How can HEIs act as key stakeholders for regional innovation development? [Visit our website](#) for more information and follow us on social media.



Subscribe for the InnoHEIs newsletter

Copyright © 2022 InnoHEIs Interreg Europe, All rights reserved.

Want to change how you receive these emails?  
You can [update your preferences](#) or [unsubscribe from this list](#).

