

Welcome to Birmingham

Lloyd Broad

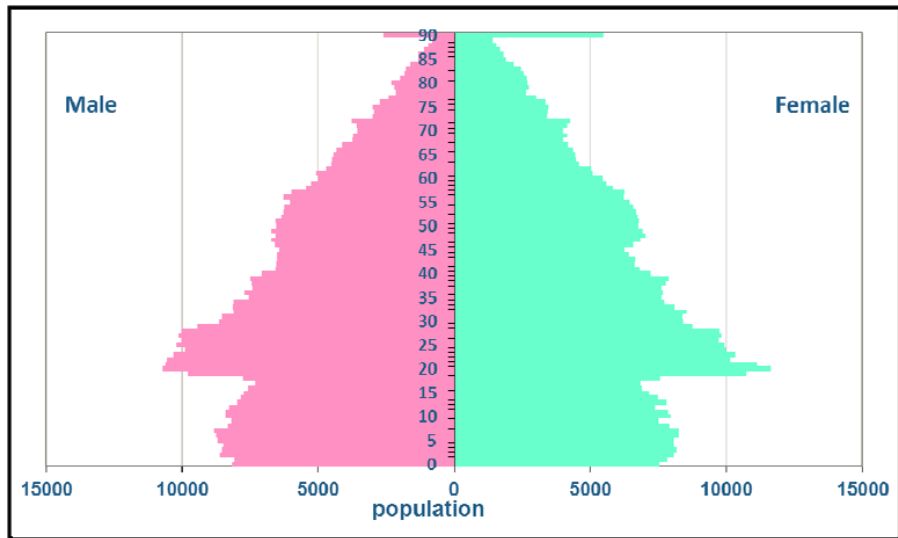
Head of European and International Affairs

Birmingham City Council





The Office for National Statistics (ONS) estimates that Birmingham's resident population was **1,141,800** in 2019



Mid-year population estimates

Making a **positive difference** every day to people's lives



DID YOU KNOW THAT...



A HISTORY OF INNOVATION



1700 Gun Quarter – Napoleonic, Crimea and American Civil War	1880 Dr Joseph Sampson – Surgical Dressings
1774 Joseph Priestley – Discovery of oxygen	1893 Charles Dickens – A Christmas Carol
1776 Boulton and Watt – Steam Engine/Industrial Revolution	1902 George Andrew Derby – Smoke Detector
1798 William Murdock – The first to make extensive use of coal gas for illumination and a pioneer in the development of steam power.	1920 Joseph Lucas – 1 st electric car
1840 George and Henry Elkington – Founder of the electroplating	1930s World's biggest manufacturer of motorbikes
1856 Alexander Parkes – Invention of what would later be developed into plastics	1939 Microwave oven
1873 Joseph Chamberlain – Mayor of Birmingham/modern civic government	1940 Spitfire planes -20,000
1875 Acme Whistles - manufacturing and selling many different whistles	1951 Rupert Billingham and Peter Medawar – skin grafts
1779 James Watt - invented document copier (photocopier)	2012 'Birmingham Made Me' initiative

Birmingham City Council Plan: 2018-2022

Challenges and opportunities

BIRMINGHAM HAS
1,141,000
CITIZENS
46%
UNDER 30



Our population is expected to rise to 1.31million by 2039 (15% rise from now) and 24% predicted rise in adults aged 85+ by 2028.

90
A

DIFFERENT
LANGUAGES
ARE SPOKEN

Birmingham has a young and richly diverse population with 25% of the population under-18 and 42% from Black and Minority Ethnic communities.

OUTSIDE OF LONDON
OUR CITY IS THE
MOST
ETHNICALLY &



CULTURALLY
DIVERSE



1,789
CHILDREN
IN CARE
(UNDER 18)

1 in 3 children live in poverty and there is a gap in life expectancy between the wealthiest and poorest wards. English is not the first language for 42% of school children.

1,836
FAMILIES
SUPPORTED BY
FAMILY SERVICES*

(*THINK FAMILY)



Unemployment is higher than the UK average – 6.4% in Birmingham compared to 2.6% in the UK. Unequal employment rates across Birmingham – e.g. Hodge Hill at 46% compared to 78% in Sutton Coldfield. Air pollution causes up to 900 premature deaths (deaths before the age of 75) per year.



61,818

COUNCIL HOUSES

89,000 new homes are needed by 2023: street homelessness is on the rise and 1 in 88 people (12,785) are homeless.



MOST RAPIDLY
IMPROVING CITY

to live and work in with exciting new developments in Birmingham city centre, delivering almost 13,000 new homes, over 40,000 jobs and adding £2billion to the local economy.

COMMONWEALTH
GAMES

will reposition Birmingham globally.

GENERATING
£526m

for the regional economy and creating 1,000 new homes.



Wide ranging lively cultural offer, including world class theatres, Town Hall and Symphony Hall and a rich tapestry of festivals.

CITIZENS'
TOP PRIORITIES

#1

Clean
Streets
(57%)



#2

Refuse
Collection
(55%)



#3

Child Protection
and Safeguarding
(37%)



#4

Road and
Pavement Repairs
(37%)



#5

Care and Support
for Older and
Disabled People
(36%)



HOME TO OVER

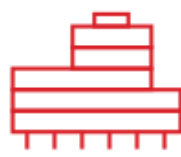
20
MUSEUMS



571
PARKS



More than any other European city.



4 MILLION VISITORS TO
CITY'S 37
LIBRARIES
ANNUALLY



12,373
ADULTS (18+)
RECEIVING
LONG-TERM SUPPORT

35 MILES
OF WATERWAYS
MORE CANALS
THAN VENICE



HOME TO
5

UNIVERSITIES
with 87,400
students
(aged 16-64).

IN 2017, MORE THAN

12,000
NEW COMPANIES
OPENED THEIR DOORS
FOR NEW BUSINESS
IN BIRMINGHAM

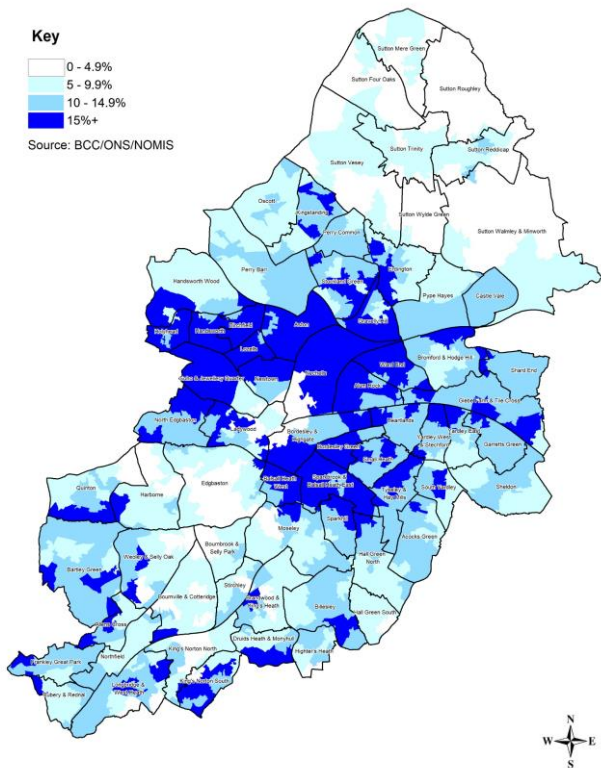


ECONOMIC RECOVERY



Labour Market Impacts

Map 1 Birmingham Claimant Count Unemployment Proportions March 2021



Highest Levels of Unemployment Since 1980s

- 83,490** Claimant Unemployed (Apr21)

Birmingham	WMCA (3LEPS)	UK
15.3%	10.3%	7.8%

- 16.225** Youth (18-24) Claimants

Birmingham	WMCA (3LEPS)	UK
19.6%	16.6%	13.2%

- Unemployment rate is nearly double the national rate and the highest amongst the core cities
- Highest rate of youth unemployment amongst core cities

Constituency Claimant Count Apr 2021

Constituency	Rate	National Rank
Ladywood	28.2	2
Hodge Hill	27.3	3
Erdington	21.6	5
Yardley	21.6	6
Hall Green	18.2	12
Northfield	15.1	26
Perry Barr	14.5	34
Selly Oak	8.5	191
Edgbaston	8.3	201
Sutton Coldfield	3.5	521

- High levels of entrenched unemployment in areas of the city
- Ladywood, Hodge Hill, Erdington & Yardley in the top 10 for highest unemployment rates of all Parliamentary Constituencies in the country.

Labour Market – Covid Impacts

Unemployment - Covid Impact

+34,930 (+72%)

Total Claimants

+7,385 (+84%)

Youth Claimants

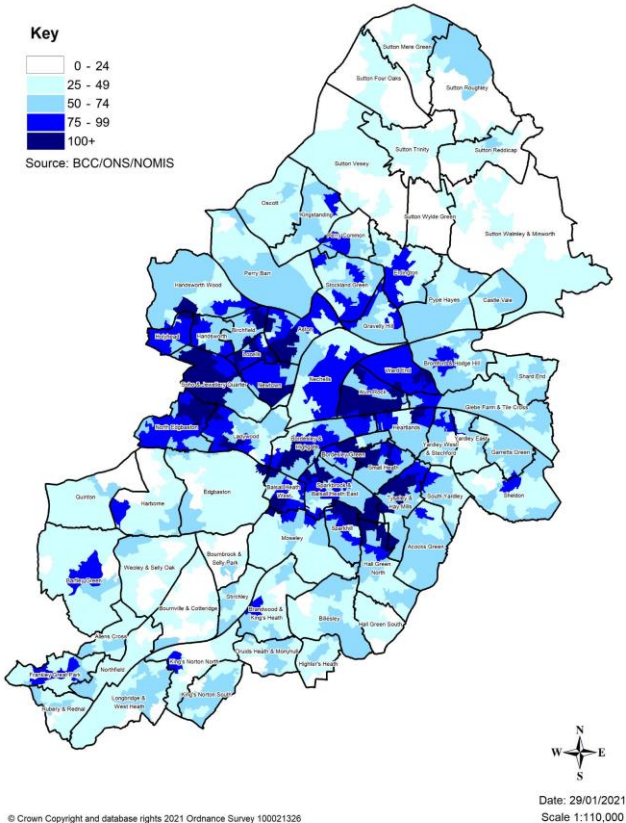
+13,380 (+70%)

Female Claimants

Groups Disproportionately Impacted by Covid

BAME Workers	Young Workers
Lower Skilled/Income Occupations	Temporary/Gig Economy Workers

Areas with existing high levels of unemployment and residents in the above groups have seen the largest increase in claimants.



Growth in Claimants Top 10 Wards

Soho & Jewellery Quarter	1,290
Alum Rock	1,195
Sparkbrook & Balsall Heath East	1,120
Aston	1,095
North Edgbaston	1,065
Ladywood	1,020
Small Heath	960
Sparkhill	925
Glebe Farm & Tile Cross	900
Stockland Green	860

Growth in Youth Claimants Top 10 Wards

Alum Rock	265
Sparkbrook & Balsall Heath East	265
Small Heath	220
Soho & Jewellery Quarter	220
Aston	215
Sparkhill	215
Glebe Farm & Tile Cross	210
Bromford & Hodge Hill	205
North Edgbaston	200
Ladywood	200

Pre Covid Economic Baseline & Trends

Economic Output (2018)



£31.9bn

Annual Economic Growth

4.0% **1.8%** **1.4%**

Birmingham **Core Cities** **UK**

Workplace Employment



524,000

Annual Growth

1.0% **1.5%** **1.1%**

Birmingham **Core Cities** **GB**

Business Base



38,370

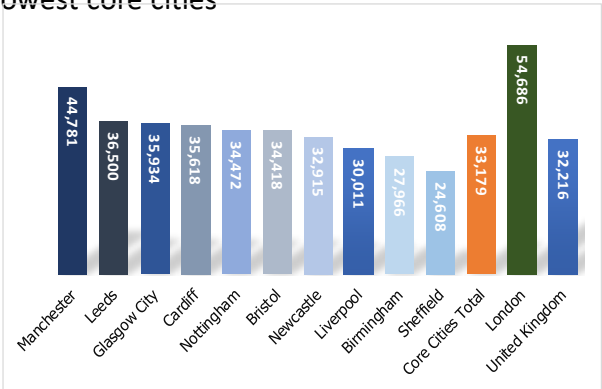
Enterprises

Annual Growth

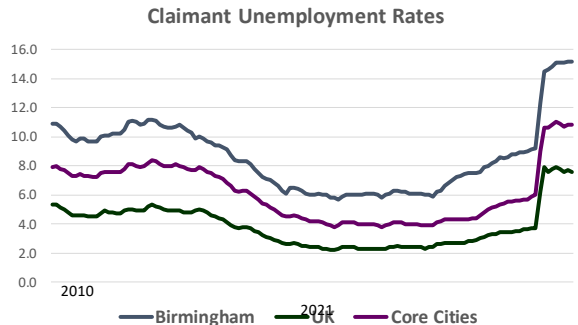
4.5% **2.5%** **1.2%**

Birmingham **Core Cities** **UK**

Strong recent economic growth but GDP per head is well below national level and one of the lowest core cities



Persistent high levels of claimant unemployment in the city



Resident Workforce (16-64)

Residents have lower skill levels than national and core city average and lower levels of economic activity, especially within some groups and communities

Skill Levels (2019)

NVQ3+

51.3%

59.0%
Core Cities

58.4%
UK

No Qualifications

12.1%

10.1%
Core Cities

7.9%
UK

Employment Rates (2019)

All People

65.2%

69.7%
Core Cities

BAME

55.3%

75.6%
UK

56.4%
Core Cities

66.2%
UK

Economic Inactivity Rates (2019)

All People

28.4%

26.2%
Core Cities

Females

36.6%

21.2%
UK

30.9%
Core Cities

25.62%
UK

Furlough Scheme

At 31st March

62,000

Birmingham
Workers

15%

of Eligible
Workforce

Self Employment Income Support Scheme R3

At 31st January

32,000

Self-Employed

70%

Take up

Rate

Unique Job Postings (Vacancies)

56,600

62,800

Apr 2021

2020

Feb

6,200 (-10%)

Sector Exposure & Resilience

	Jobs	Enterprises	GVA	% of Staff Furloughed At 31st January	Exposure
Hospitality & Culture	50K	3K	£1bn	56%	<div></div>
Retail	74K	7K	£3bn	21%	
Construction	19K	3.5K	£1.6bn	19%	
Advanced manufacturing	19K	1K	c£2bn	13%	
Logistics & Transport	24K	2K	c£1.6bn	12%	
Business Professional & Financial Services	130K	14K	£8.5bn	12%	
Low Carbon & Environment	9K	1K	c£0.5bn	9%	
Digital	31K	4K	c£1.5bn	6%	
Public Sector & Education	78K	1K	£4.1bn	4%	
Life Science & Healthcare	54K	1.5K	c£2bn	4%	

ONGOING PROJECTS – EU FUNDING



Background: Current EU Funding Picture in BCC

BCC in the current EU funding programme period has secured approximately £100m of EU funds (ERDF and ESF)

Examples include:

- Youth Promise Plus - £27m
- World of Work (WoW) - £2m
- PURE - £6m
- Supplier Excellence Programme - £6m
- Business Growth Programme - £15m



€278m ESIF 2014 – 2020



European Union
European Structural
and Investment Funds

PA 1

AMCASH

ARLI

BSEEN

Demand Hub

D14M

Promoting Functional Materials

Smart Fub

Think Beyond Data

Total: £41million ERDF

EUROPEAN FUNDING IN BIRMINGHAM AT OVER: £1.3 BILLION

- £50 million ERDF: ICC
- £25.6 million ERDF: Millennium Point
- £3 million ERDF: Town Hall
- £6 million ERDF: Innovation Birmingham



New Policy Instrument - UK Shared Prosperity Fund

- Launch of prospectus delayed to the autumn 2021
- Will be substantive replacement for EU Funds from April 2022
- Likely UK value £1.5bn per year
- Important to consider alignment with other funding, eg, LUF
- UKSPF consultation and key 'asks';
 - UKSPF must address imbalance between London/SE and the rest
 - Allow local flexibility to determine priorities
 - Be of at least equivalent value to EU funds
 - Devolved powers and funding (subsidiarity)
 - Single pot (integrated funding rather than institutional and operational silos)
 - Allow for local decision making flexible and responsive to local needs
 - Governance that respects the partnership principle
 - Long term multi-annual funding agreements

SECTOR STRENGTHS



Priority and Growth Sectors

- Life sciences and health
- Creative Industries
- Digital
- Financial and professional services
- Low CO2 development
- Advanced Manufacturing

A CITY LOOKING TOWARDS THE FUTURE



Route to Zero (R20) Resident survey results

Air quality: the view from Birmingham

87%

think air quality is a 'serious issue' to be
TACKLED NOW



88%

say air quality has a
**VERY SERIOUS
IMPACT ON HEALTH**



Brummies think the

TOP 3 AIR POLLUTION CULPRITS*

are:

- 1 Congestion/
vehicles idling (86%)
- 2 Lorries and vans (83%)
- 3 Diesel cars (82%)



#brumbreathes

Results taken from Birmingham City Council Be Heard 'Birmingham Air Quality' survey, March/April 2017 – percentages rounded to nearest 1 per cent; 1,104 respondents. *Respondents could choose more than one option

EFFECTS OF AIR POLLUTION*

worries include:

- 1 Impact on self
and others (67%)
- 2 Burden on the NHS (60%)
- 3 Climate change (58%)



TOP WAYS TO TACKLE AIR POLLUTION*

- 1 Using public transport (75%)
- 2 More trees and green spaces (71%)
- 3 Restricting access for
polluting vehicles (68%)

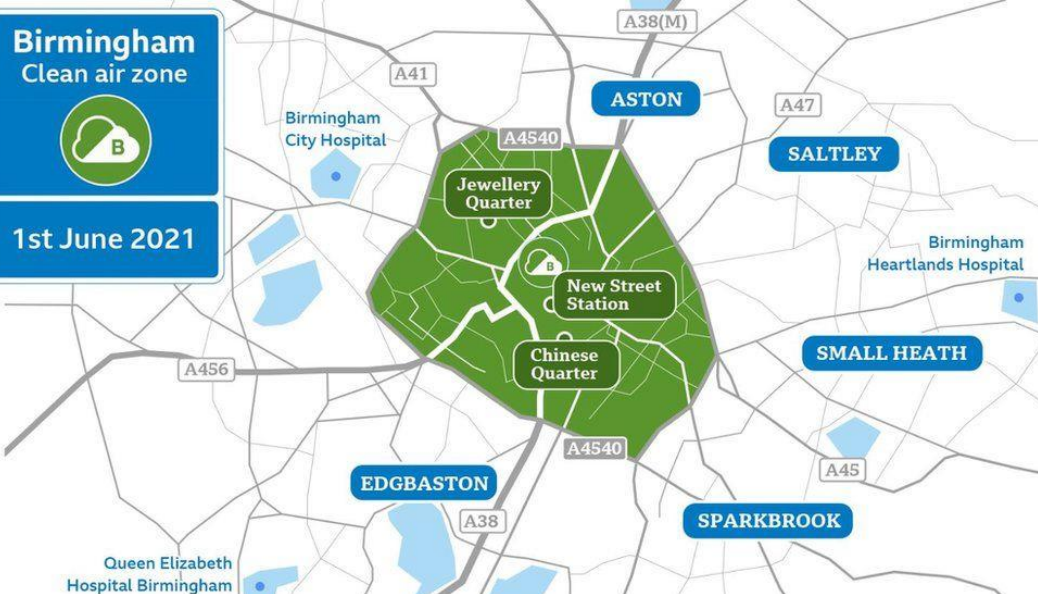


 **Birmingham
City Council**

Birmingham
Clean air zone



1st June 2021



HS2



Making a **positive difference** every day to people's lives



Thank you for listening!

