

WATER SECTOR

SELF-ASSESSMENT

FRIESLAND (THE NETHERLANDS)

iWATERMAP
Interreg Europe

RIS 3 - PRODUCTIVE / ENTREPRENEURIAL FOCUS OF A REGION



Water technology



Dairy industry

TRIPLE HELIX

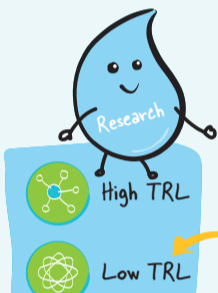
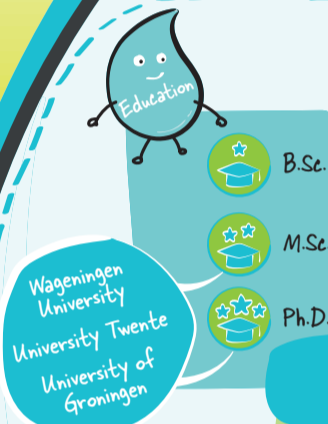
Water Campus

Demonstration

European Water Tech Week
Leeuwarden Aquatech



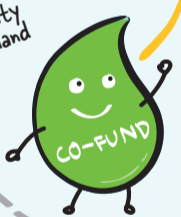
*Private and public end-users



WaterCampus Alumni working as Water Tech professionals

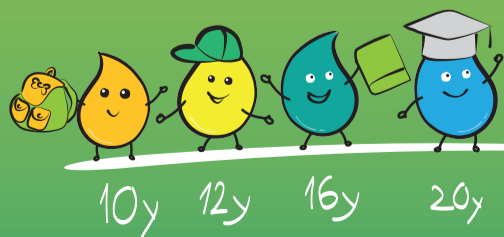


Municipality of Friesland



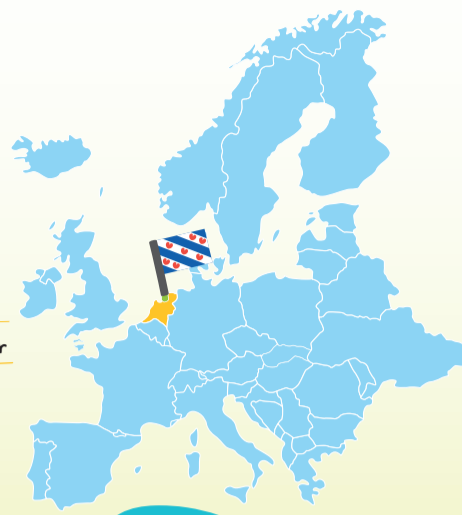
2019/2020

HUMAN CAPITAL



SENIOR

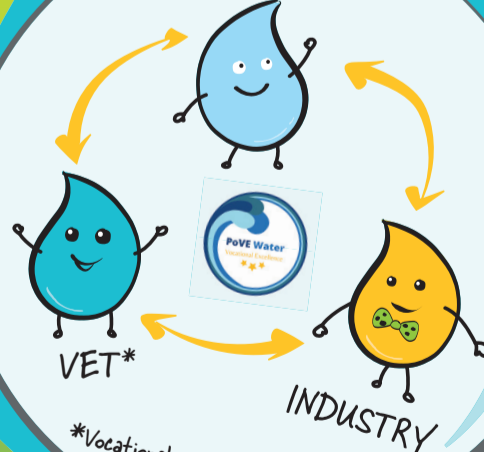
- Population 649,988
- Area 5,749 km²
- Gross Domestic Product € 29,600 per capita
- Amount of sewage treatment plants 27
- An annual fee for the availability of drinking water 45,58 € per household
- Drinking water tariff (including tax) 1.06 €/m³
- Average tax for sewage per year 199 € per household
- Average amount of treated wastewater 85 M m³/year
- Water losses:
 - distribution losses in drinking water network 6%
 - production losses in production locations 3%
- Total length of drinking water network 8619 km
- 60% population supplied by GROUNDWATER
- 40% population supplied by SURFACE WATER



CRITICAL MASS



HIGHER education



*Vocational education & training

KNOWLEDGE TRIANGLE

INTERNATIONALIZATION



Platform of Vocational Education

S3 Platform Water Smart Territories

global water tech hub alliance



This work has been supported by the project "Water Technology Innovation Roadmaps - iWatermap" (Nr. PGI05062) which is funded by the European Union Interreg-Europe ERDF