

# WATER SECTOR

SELF-ASSESSMENT

## SOUTH MORAVIAN REGION (CZECH REPUBLIC)

iWATERMAP  
Interreg Europe

### RIS3 - PRODUCTIVE / ENTREPRENEURIAL FOCUS OF A REGION



Advanced production and engineering technologies



Technology for the aerospace industry



Software and hardware development



Drugs, medical care and diagnostics

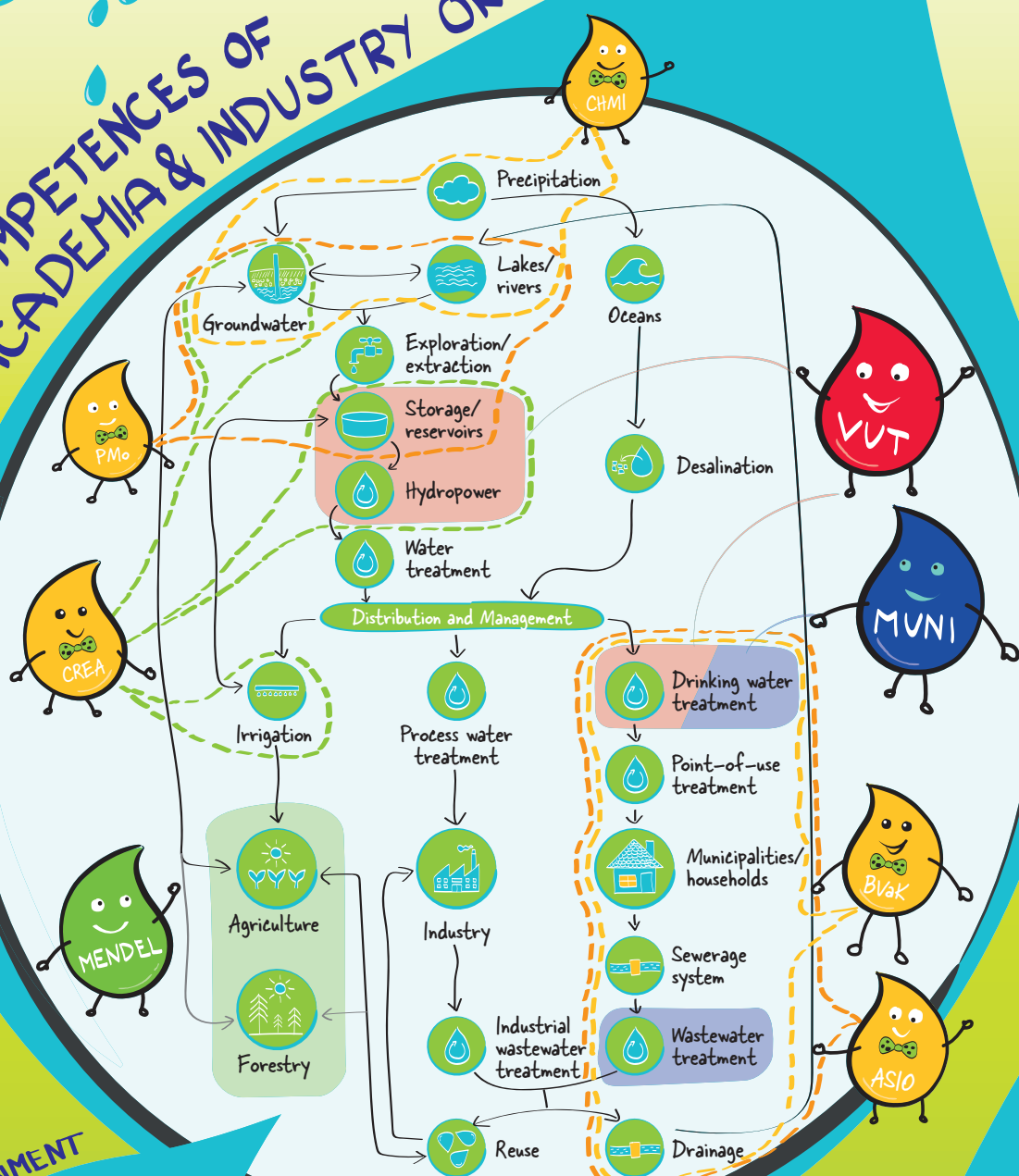


Precision instruments

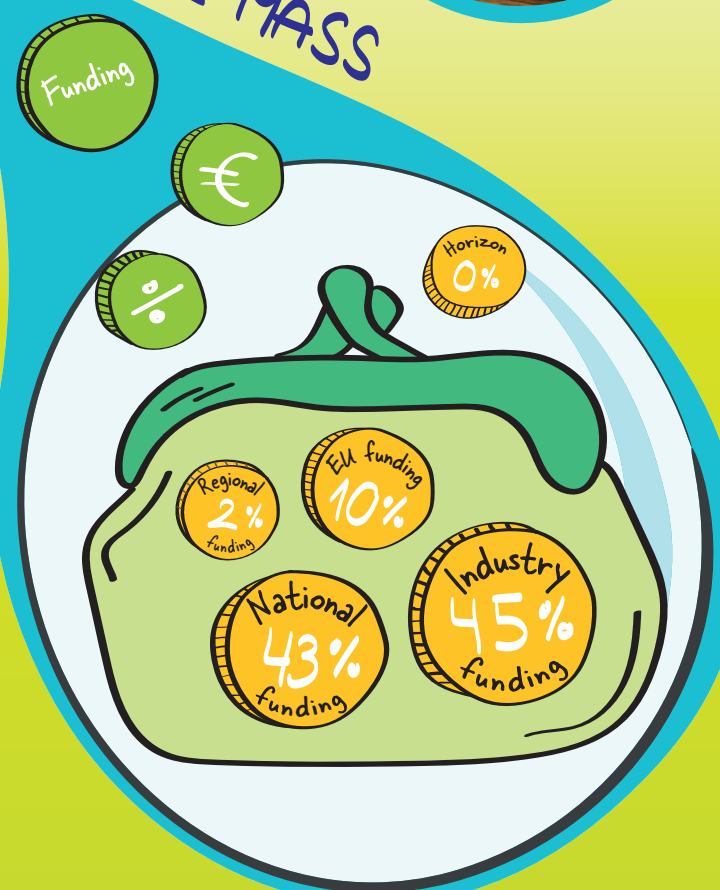
- Population 1,2 M
- Area 7200 km<sup>2</sup>
- Length of drinking water network 7879 km
- Interesting fact:
  - Nearly all water resources of SMR lie outside of region



### COMPETENCES OF ACADEMIA & INDUSTRY ORGANISATIONS



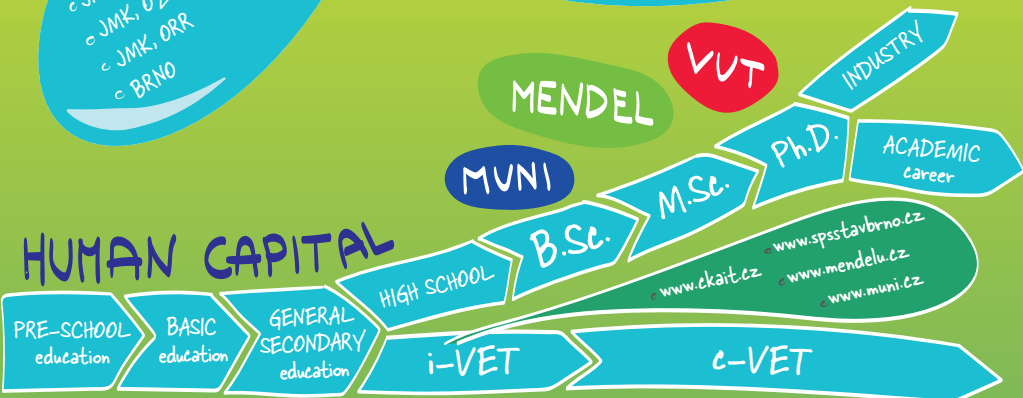
### CRITICAL MASS



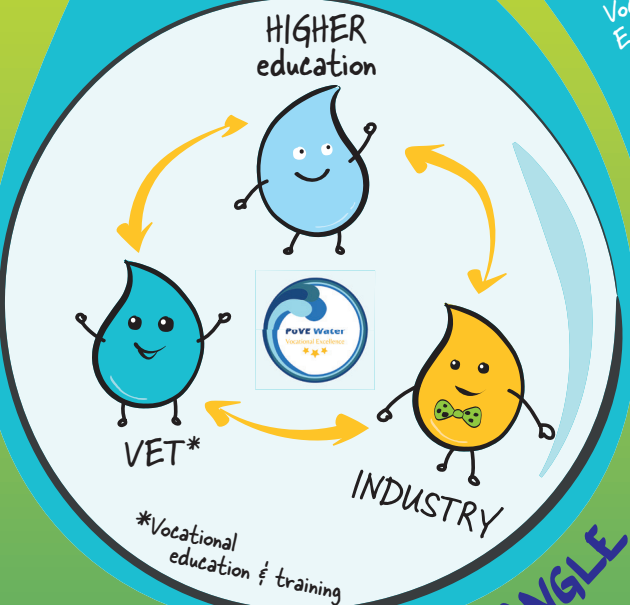
### GOVERNMENT

- JMK, OŠ
- JMK, OŽP
- JMK, ORR
- BRNO
- RRAJM
- CHMI
- PMO

### HUMAN CAPITAL



### INTERNATIONALIZATION



### KNOWLEDGE TRIANGLE

