

# WATER SECTOR

SELF-ASSESSMENT

## PORTUGAL NORTHERN REGION

iWATERMAP  
Interreg Europe

### RIS 3 - PRODUCTIVE / ENTREPRENEURIAL FOCUS OF A REGION



**Nuclear domains:**  
Culture, Creativity and Fashion (CCF)  
Mobility Industries and Environment (MIE)  
Advanced Manufacturing Systems (AMS)



**Emerging domains:**  
Health and Life Sciences (HLS)  
Symbolic Capital, Technology and Tourism (SCTT)



**Higher risk regional investments (wild-card):**  
Marine Technologies and Economy (MTE)  
Human Capital and Specialised Services (HCSS)

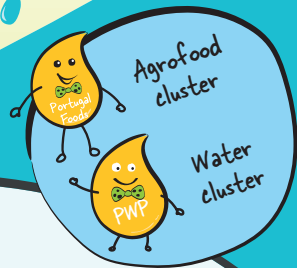


**Food and Environmental Systems**

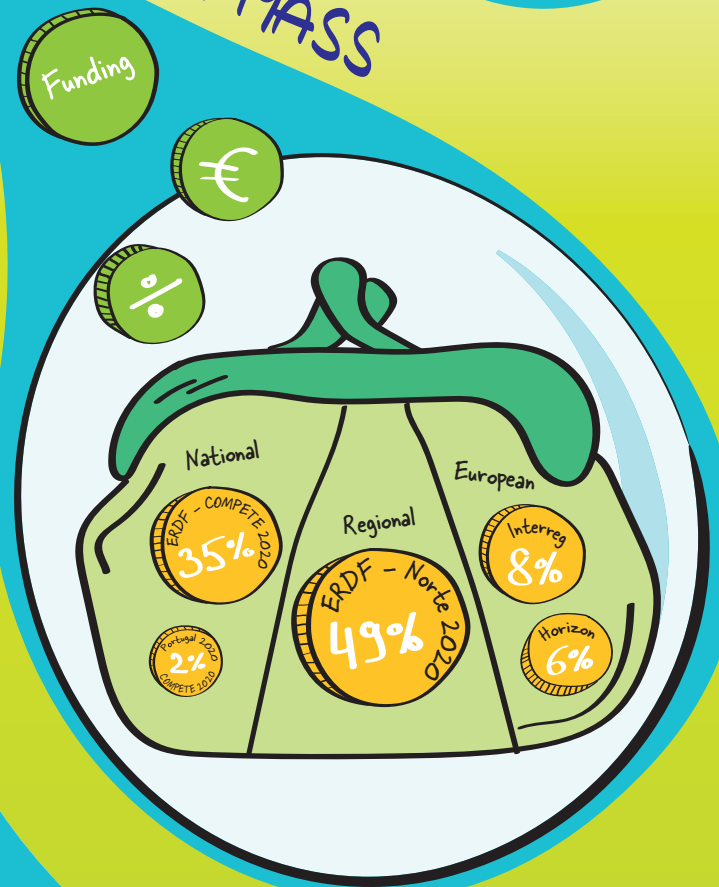
- Area 21,278 km<sup>2</sup>
- Inhabitants 3,689 M
- Water source:
  - Groundwater 7%
  - Surface water 93%
- Safe Water > 98%
- Population served by drinking water systems 93%
- Population served by wastewater drainage systems 80%
- Water and sewage tariff 1.8€/m<sup>3</sup>



### COMPETENCES OF ACADEMIA & INDUSTRY ORGANISATIONS



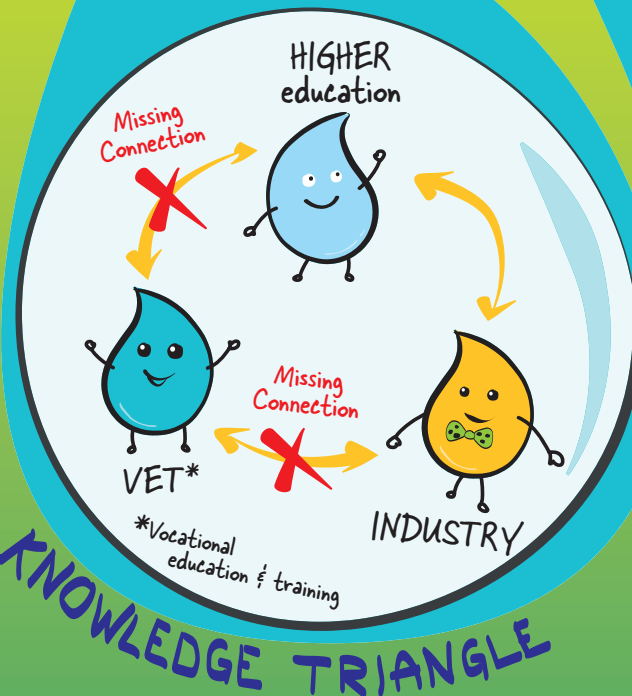
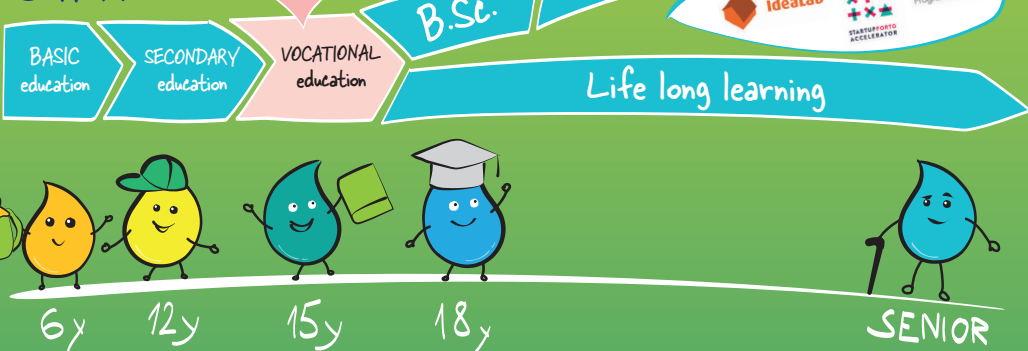
### CRITICAL MASS



### GOVERNMENT

- Regional Coordination and Development Commission (CCDR-N)
- ARH Norte - Northern Administration of Hydric Resources

### HUMAN CAPITAL



### INTERNATIONALIZATION



Northern of Portugal is member of S3P Water Smart Territories