



Digital Innovation and the Evolution of Tourism in a Challenging Environment

Dr. Caitriona Strain

Programme Manager at ERNACT

caitriona.strain@ernact.eu

04 November, 2020

County Donegal Profile

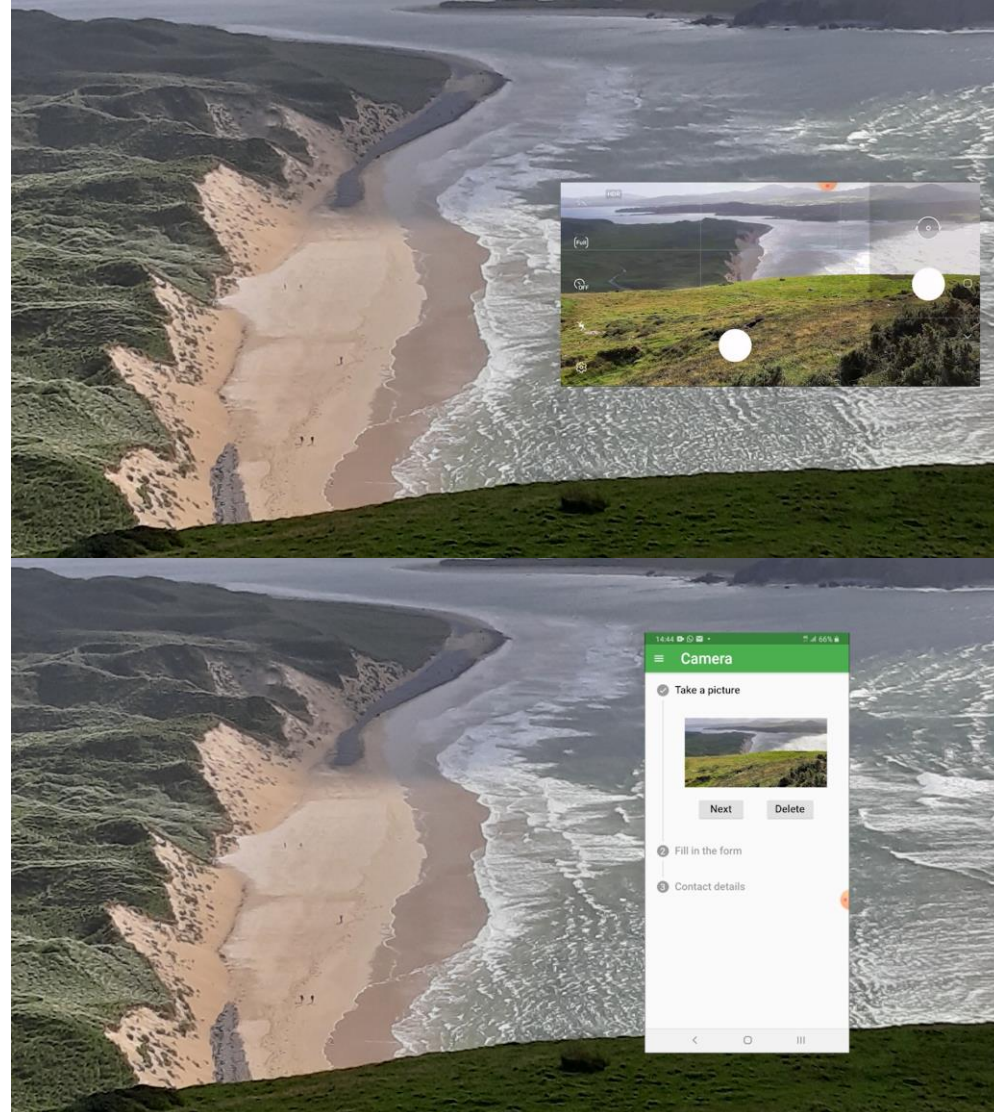
- County Donegal is the most northern county in Ireland.
- Population – 158,755 (*Census 2016*)
- 4th largest county in the Republic of Ireland and the largest county in the province of Ulster.
- Coastline 1,134km long (*Wild Atlantic Way*)
- Donegal has a border of 140km with Northern Ireland and 9 km with the Republic of Ireland (*with Co. Leitrim*)
- 6,408km of road network (152km NP)



Coastal management service

The objectives of this service are to:

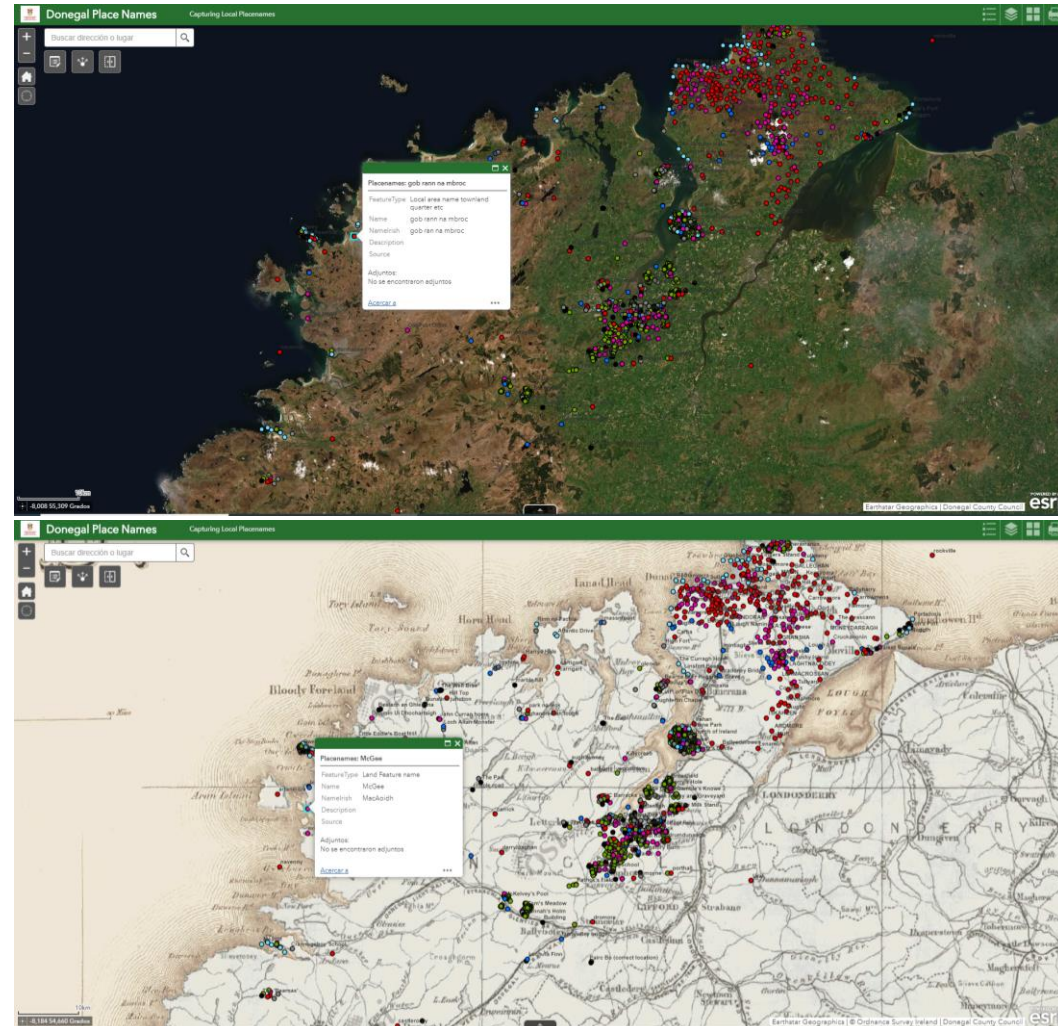
- 1) engage public participation as citizen scientists in the field of marine coastal erosion mapping through crowd-sourcing imagery.
 - 2) control and manage coastal erosion to help with coast-line development.
- The captured images will be used to monitor coastal zone fluctuations and changes over time and form a valuable baseline resource for climate adaptation and mitigation measures.
 - This service is being tested in County Donegal (Ireland).
 - The primary stakeholders are the general public, coastal residents, and visitors/tourists accessing beach areas.
 - Coastal managers and ambassadors are secondary stakeholder groups.



Cultural & heritage GIS crowdsourced tool

The objectives of this service are to:

- 1) crowdsource and preserve knowledge '*only known locally*' by working with local communities in County Donegal and employing Geographic Information Systems (GIS)
- 2) engage and empower local communities to build-up and digitize their own cultural heritage assets.





**CARPE
DIGEM**
Interreg Europe



European Union
European Regional
Development Fund

Thank you!

Questions welcome



@CARPE_DIGEM



@InterregCARPEDIGEM



@Carpe Digem Interreg



@carpedigeminterreg