



**IMPROVE**

Interreg Europe



European Union  
European Regional  
Development Fund

# North-West Regional Development Agency

**Gergely TÖRÖK**

**Beatrice Moldovan**

[torok.gergely@nord-vest.ro](mailto:torok.gergely@nord-vest.ro)

[beatrice.moldovan@nord-vest.ro](mailto:beatrice.moldovan@nord-vest.ro)

30<sup>th</sup> October, 2019 □ Steering Committee Meeting

---

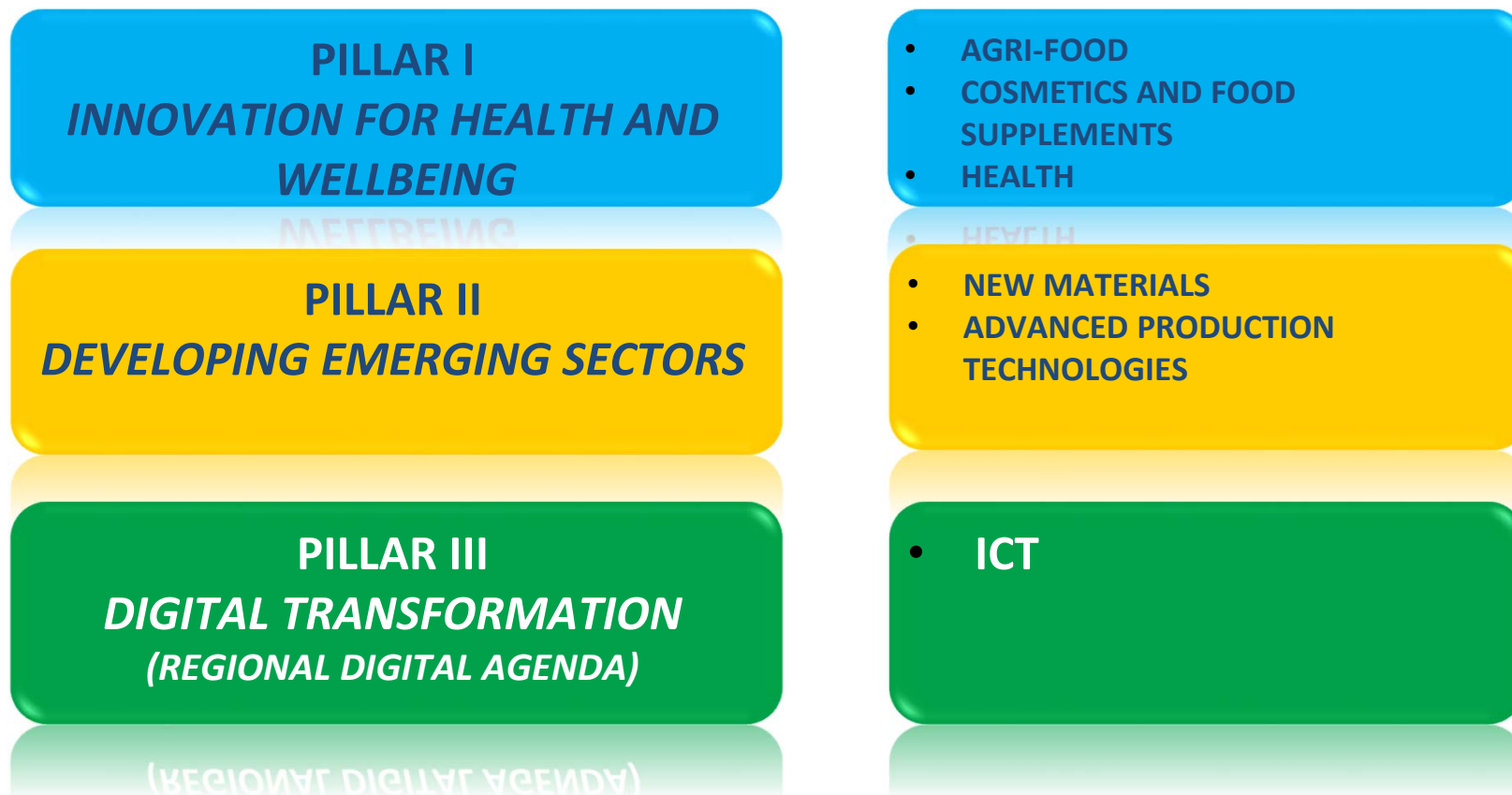
# NORTH-WEST REGION - Northern Transylvania



- located in **Central-Eastern Europe**
- **NUTS 2 region** (not administrative – voluntary association)
- **six counties:** Bihor, Bistrița-Năsăud, Cluj, Maramureș, Satu Mare and Sălaj (14% of the territory)
- **2.74 Mil inhabitants** (12,92%), of which 52.6 % living in urban areas
- **43 Cities** (4 with more than 100.000 inhabitants)
- **4 International airports**

# NORTH-WEST REGION - Northern Transylvania

## Fields of Smart Spacialization:



# The R&D&i system

- **Competitiveness:** 257<sup>th</sup> place out of 311 (3<sup>rd</sup> place at national level) – according to the European Regional Competitiveness Index
- **GDP/capita:** 16.900 euro (PPS) (4<sup>th</sup> place at national level)
- **Entrepreneurial spirit:** 2<sup>nd</sup> place at national level according to the number of SMEs
- **Gross Added Value:** 27.4% industry vs. 4.6% agriculture (almost 50% of the population living in rural areas)
- **Regional Cooperation:** 14 local/regional clusters (IT, agri-food, furniture, energy, advanced materials, etc., many of them with ESCA silver and gold label)
- **RDI infrastructure:** 7 public universities + 14 public RDI institutions of national importance, 11 RDI of regional importance (+ 8 private universities + 88 private entities with RDI activity), no functional STP
- **Innovation:** one of the weakest innovators in the EU (except for the IT sector); Regional Innovation Scoreboard – last places along with the other Romanian regions, representing 28.4% of the EU average
- **RDI financing:** 0.41% of the GDP allocated to research (0.48% at national level, 2% EU average) and only 37% of RDI expenditure coming from the private sector in 2015 (EU average 60,3%)
- **Technology Transfer:** 7 accredited EITT entities – 3 TTCs, 3 TICs, 1 Office for relations with the industry, Lack of new types of TT infrastructure – demo labs, fab labs, living labs
- **Patenting:** Only 6% of EPO Romanian patents from are from the region, 8% at OSIM



- **Established in 1998** by the Law on regional development and based on Decision no. 4/1998 of the Regional Development Council of the North-West Development Region;
- **NGO of public utility with legal personality**, acting in the field of regional development as Executive Body of the North-West Regional Development Board;
- **6 county branches** in Bihor, Bistrița-Năsăud, Cluj, Maramureș, Satu Mare and Sălaj;
- Currently reached **145 employees**;
- **Responsibilities** linked to regional development objectives of the country:
  - Diminishing of regional disparities,
  - Contributing to sustainable social and economic development by policy correlation on the regional level, initiation of development projects and capitalization of local and regional resources,
  - Stimulation of interregional, internal and international, as well as cross-border cooperation, including the cooperation within the Euro regions;

## I. Program Management

## II. Services for regional development

# Who we are

## North-West RDA:

**Gergely TÖRÖK – Project manager**

**Beatrice MOLDOVAN – Implementation expert**

**Ioana BRADEA – Head of department**

**Paul Pantiş - Implementation expert**

**Angela MAN – Financial officer**

**Ovidiu MĂRGINEAN – Communication officer**



# IMPROVE

Interreg Europe



European Union  
European Regional  
Development Fund

Thank you!

---