



Córdoba | 13 June 2018 | INTHERWASTE

Ignasi Puig Ventosa | ENT environment & management

Pay-as-you-throw in Miravet, Tarragona

CRONOLOGY

- | In 2004 door-to-door collection was implemented for refuse and biowaste in Miravet.
- | In 2008 consultancy studies started to design implementation of PAYT.
- | Before adoption of PAYT, the door-to-door collection system was extended to include also packaging, paper-cardboard, and glass.
- | On 27 December 2010 started a two-week testing period, before full implementation on 11 January 2011.

SUMMARY OF THE COLLECTION SYSTEM BEFORE PAYT

Fixed annual charge

Biowaste



Refuse

Paper



Glass



Packaging



Nappies



SUMMARY OF THE COLLECTION SYSTEM WITH PAYT

Free collection

Biowaste



Paper



Glass



Nappies



Charged collection



17 litres

Refuse

0.70€/u



35 litres

Packaging

0.30€/u



STRUCTURE OF THE NEW WASTE CHARGE

NEW WASTE CHARGE

Fixed part

Variable part

*Lower than
the previous
one*



Regular bill



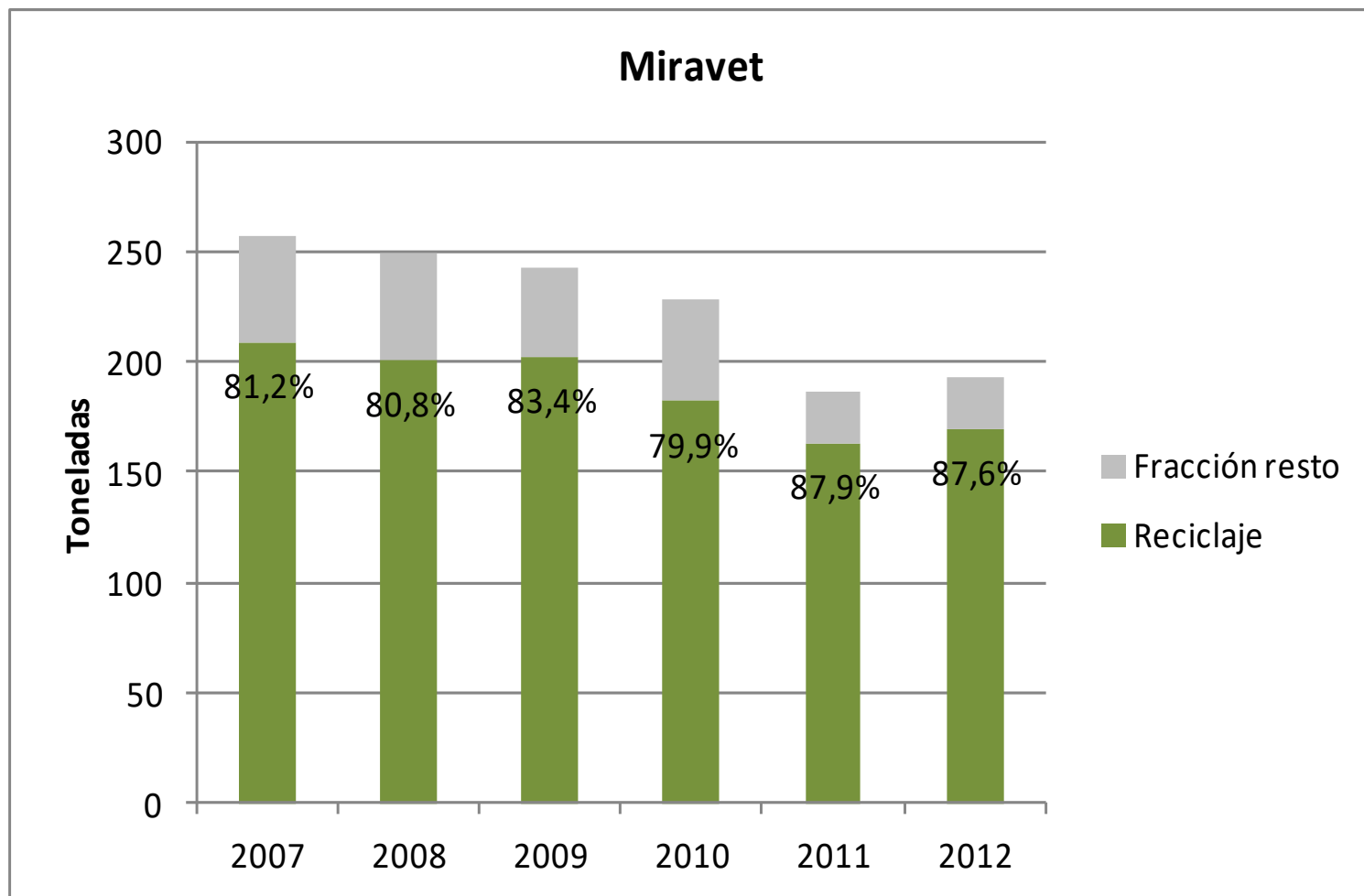
Packaging

Refuse

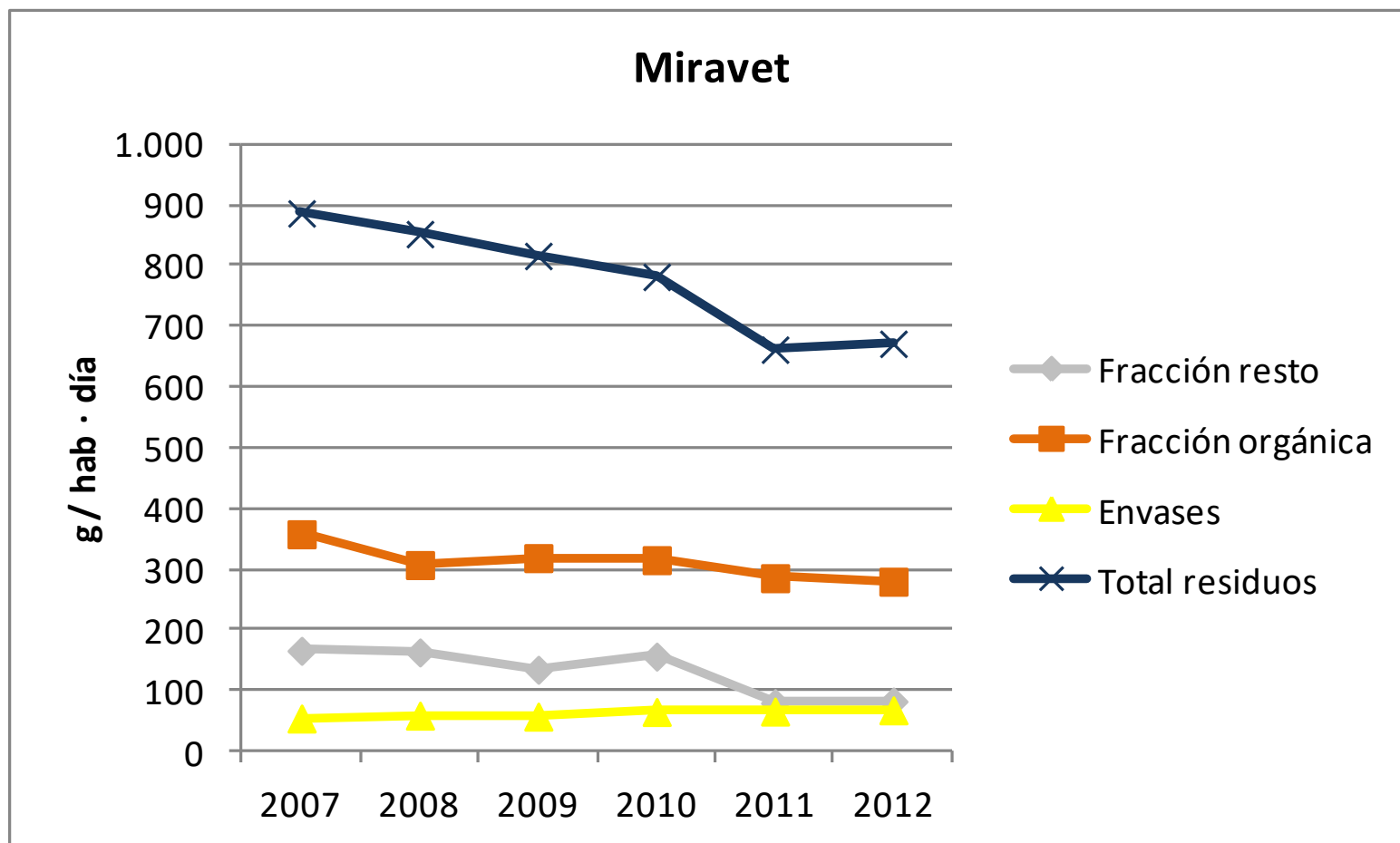


Prepaid bags

RESULTS



RESULTS



Ignasi Puig Ventosa

ipuig@ent.cat

@I_PuigVentosa

www.ent.cat



**Thanks for your
attention**