

**Interreg
Europe**



European Union | European Regional Development Fund

How to ensure a successful Phase 2?

Nicolas Singer

Head of Unit | Interreg Europe Secretariat

n.singer@interregeurope.eu

11 April 2019 | Wild Gallery , Brussels



Content



1. Context
2. Phase 2 rationale
3. Phase 2 activities
4. Reporting expectations



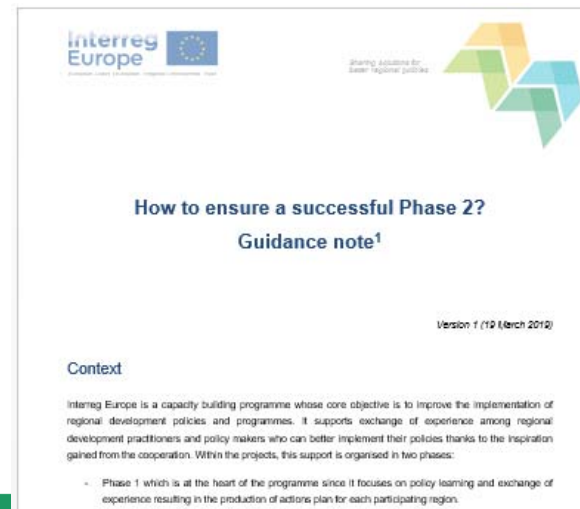
1. Context



Need for further guidance:

- Phase 2 : complete new feature of Interreg Europe
- First reporting on phase 2: July 2019
- Results of the mid-term programme evaluation

▶ Programme guidance note



2. Phase 2 rationale



Two reasons to introduce Phase 2

1. Impact of interregional cooperation takes time

Challenges of policy changes

2. Policy change: is it for the better?

Territorial effects: concrete benefits of the change

2. Phase 2 rationale

Example of territorial effect

Policy change:

A region adopts a new intelligent lighting system for its public building



Territorial effect of this adoption:

- How many public buildings / square metres equipped?
- Amount of energy saving achieved?
- Amount of CO2 emissions saved?



Policy change:

Strategy of Natural Heritage and biodiversity



Partner: Forest Sciences
Centre of Catalonia,
Government of Catalonia (ES)

An improvement of the Catalan information system of Natura 2000 :

- new prototype of open source web portal
- provide biodiversity data, to prepare the data in formats compatible with this new web portal
- to integrate data in this new platform to made them accessible to decision makers and general public

Funds influenced: 30,000 €

Inspiration from: *The Wallon workshop* and study visit to the *Public Service of Wallonia*, Wallonia region (BE)

2. Phase 2 rationale



Objective: to better demonstrate the impact of cooperation

- **Continue monitoring policy changes**
- Estimating territorial effects



3. Phase 2 activities



- Action plan implementation: under the responsibilities of the regions and not of the programme
- Although limited to monitoring, Interreg Europe support remains fully legitimate:
 - Majority of policy changes may occur in phase 2
 - Phase 2, source of further learning ('learning by doing')
 - Monitoring not possible without an active partnership

3. Phase 2 activities



Extract from programme mid-term evaluation:

*“Project partners should adopt a **pro-active approach to monitoring** the implementation of their action plans (i.e. not a passive “wait-and-see” position). This should also comprise an ongoing interaction with relevant regional or local actors, especially in those cases where stakeholder organisations are directly responsible for actually improving the addressed policy instruments.”*

3. Phase 2 activities



Recommendations

Guidance note includes possible measures to ensure proactive monitoring:

- Per type of activities
- At LP/ project level and partners level



e.g. - Prepare shared overview table

- Fix quarterly deadlines to report on the progress made
- Identify key stakeholder and invite them to annual meetings



4. Reporting expectations



Progress report template slightly adapted:

1. Insight into project's implementation
 - Overview of monitoring
 - 'Relevant' stakeholders involvement

2. Insight into project's results
 - Action plan implementation (per region/instrument)



4. Reporting expectations



Report on progress made in each action plan implementation:

- Only an overview is required
- No obligation to get details action by action



Conclusions



- Phase 2 is new but important
- JS always available for advice
- Guidance to be further developed with first practical experiences



**Time for
questions**





Thank you!

www.interregeurope.eu

