

# MATE

MAGYAR AGRÁR- ÉS  
ÉLETTUDOMÁNYI EGYETEM



DEPARTMENT OF  
**ZOOLOGY AND ECOLOGY**  
Institute for Wildlife Management and  
Nature Conservation

## OUR MAIN ACTIVITIES

### Pollinators

wild bees, ecology, conservation, ES

### Soil zoology

nematodes, potworms, springtails

### Soil ecotoxicology

heavy metals, pesticides, nanomaterials, microplastics vs. adsorbed pollutants

### Regenerative agriculture, NBS

effects on biodiversity (soil animals, decomposition, pollinators, birds)

### Plant protection

Plant-derived extracts in plant crop protection

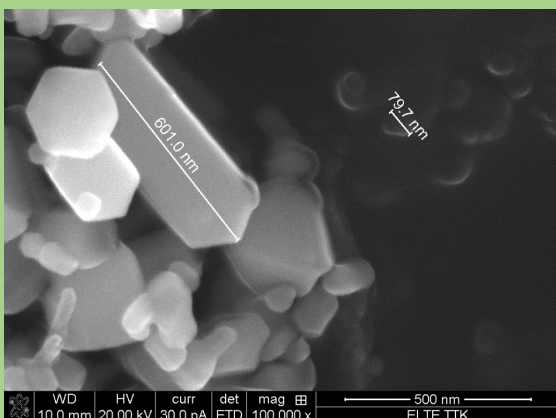
### Climate change and anthropogenic

### Disturbances

effects on soil micro-, mesofauna and decomposition

### Zoology

Study of bird communities from various aspects



## Call topics under Cluster 6

CL6-2024-BIODIV-01-1 CL6-2024-BIODIV-01-6 CL6-2024-FARM2FORK-01-1  
CL6-2024-BIODIV-01-2 CL6-2024-BIODIV-01-7 CL6-2024-FARM2FORK-02-7  
CL6-2024-BIODIV-01-3 CL6-2024-CLIMATE-01-4 CL6-2024-ZEROPOLL-02-2



### Dr. Kiss Lola Virág

[kiss.lola.virag@uni-mate.hu](mailto:kiss.lola.virag@uni-mate.hu)

Department of Zoology and  
Ecology

Páter K. u. 1., Gödöllő 2100  
Hungary

Phone: +36305330723

[www.uni-mate.hu](http://www.uni-mate.hu)