

Floating Cultures in River Deltas

Delta Lady
Interreg Europe

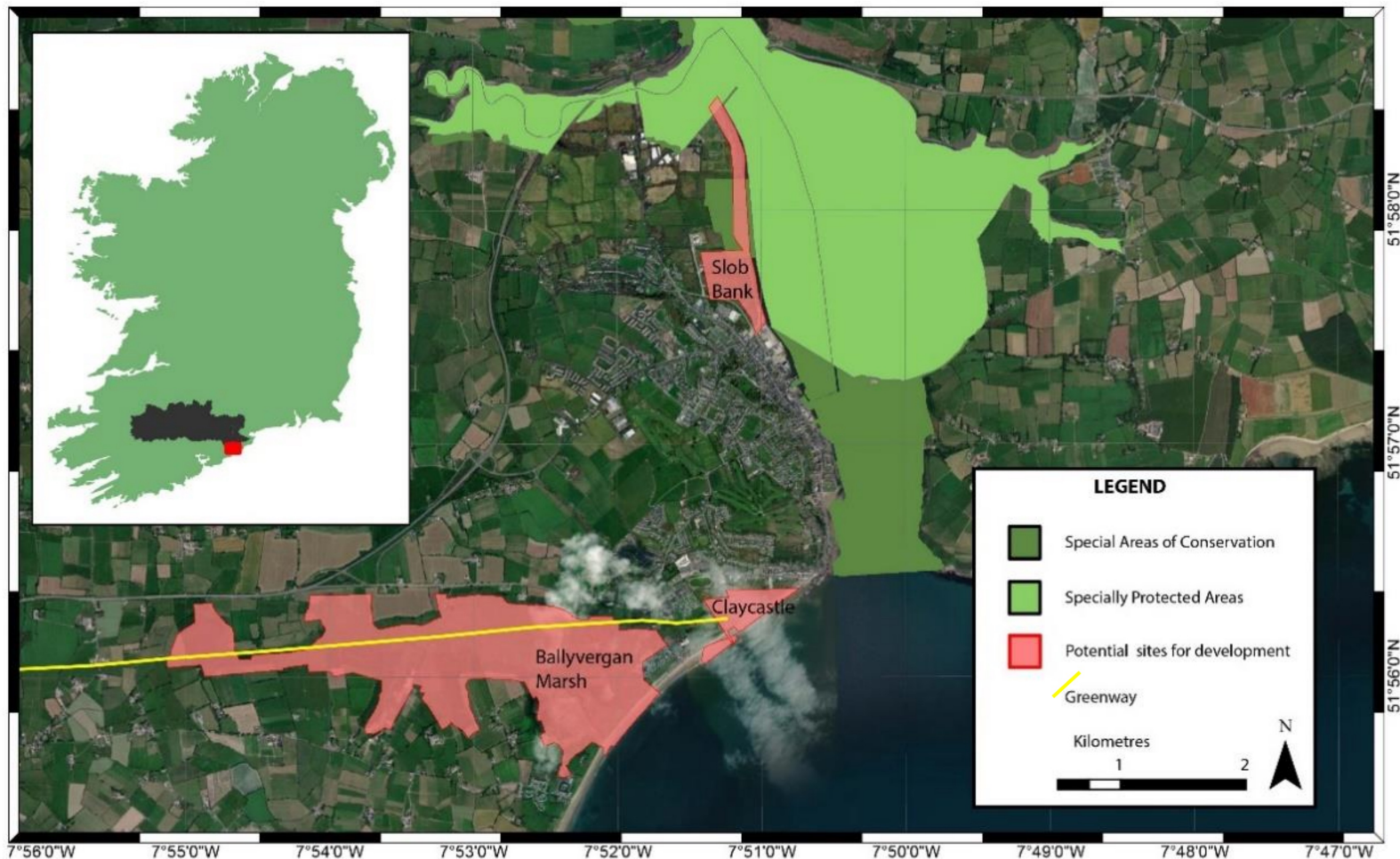
 European Union
European Regional
Development Fund

Paper:
**Applications of a Novel Method of Ecosystem
Services Assessment into Local Policy Making in
the River Blackwater Estuary, Ireland**

Authors:
David Doran (MSc)
Dr. Tim O'Higgins

The Blackwater Estuarine Area

Figure 1. River Blackwater estuary and the proposed development sites. Special Area of Conservation, Special Protection Area, Proposed Natural Heritage Area and Midleton–Youghal Greenway route indicated. The location of the Blackwater catchment on the Island of Ireland is shown in the inset.



Ecosystem Services Assessment

What framework?

- Common International Classification for Ecosystem Services (CICES) v5.1.

How do we assess?

- Regional Stakeholder Group – Cork County Council, University College Cork, EPA, Inland Fisheries, etc. – and Public Participation

What are we assessing?

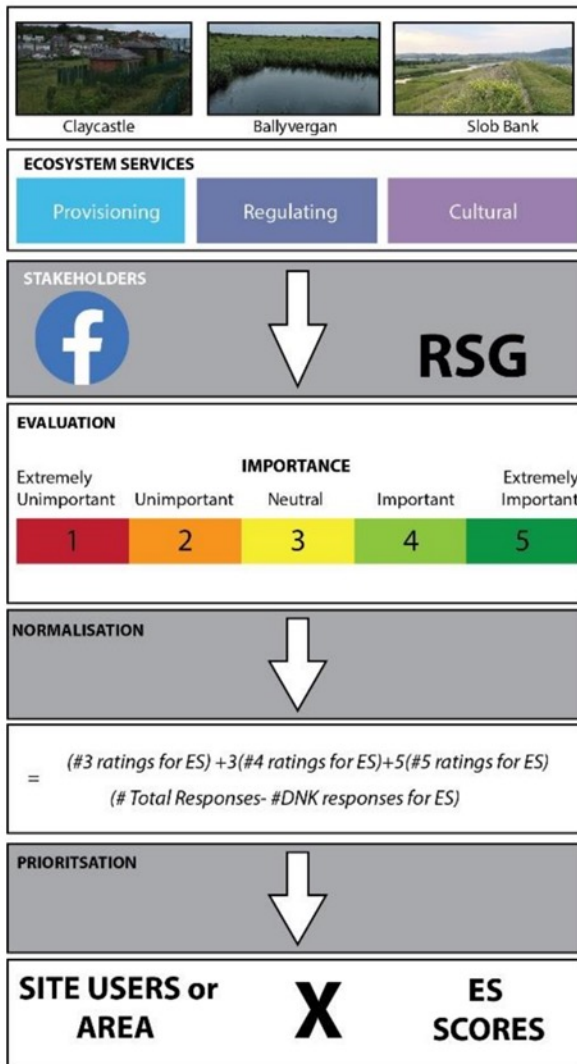
- Three sites with ES development potential

Can it be used a tool within policy to inform development?

Other considerations:

Transferability – Replication in other areas

Ecosystem Services Assessment



SITE IDENTIFICATION

Identification and characterisation of potential development sites

SERVICE IDENTIFICATION

Longlisting of ecosystem services based on the CICES v5 classification

ES ASSESSMENT

Identification of stakeholders

Construction and deployment of survey instrument

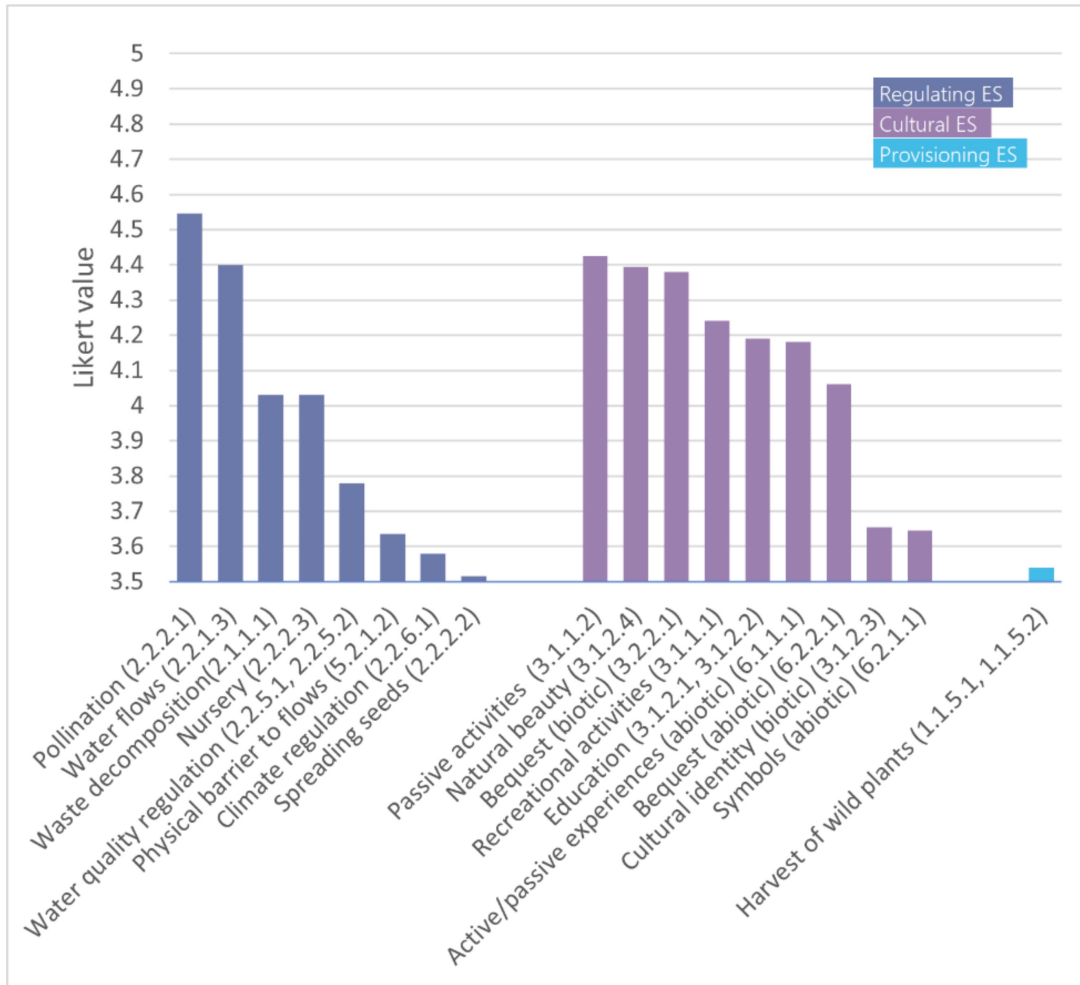
Data analysis

SITE APPRAISAL

Site appraisal and recommendations

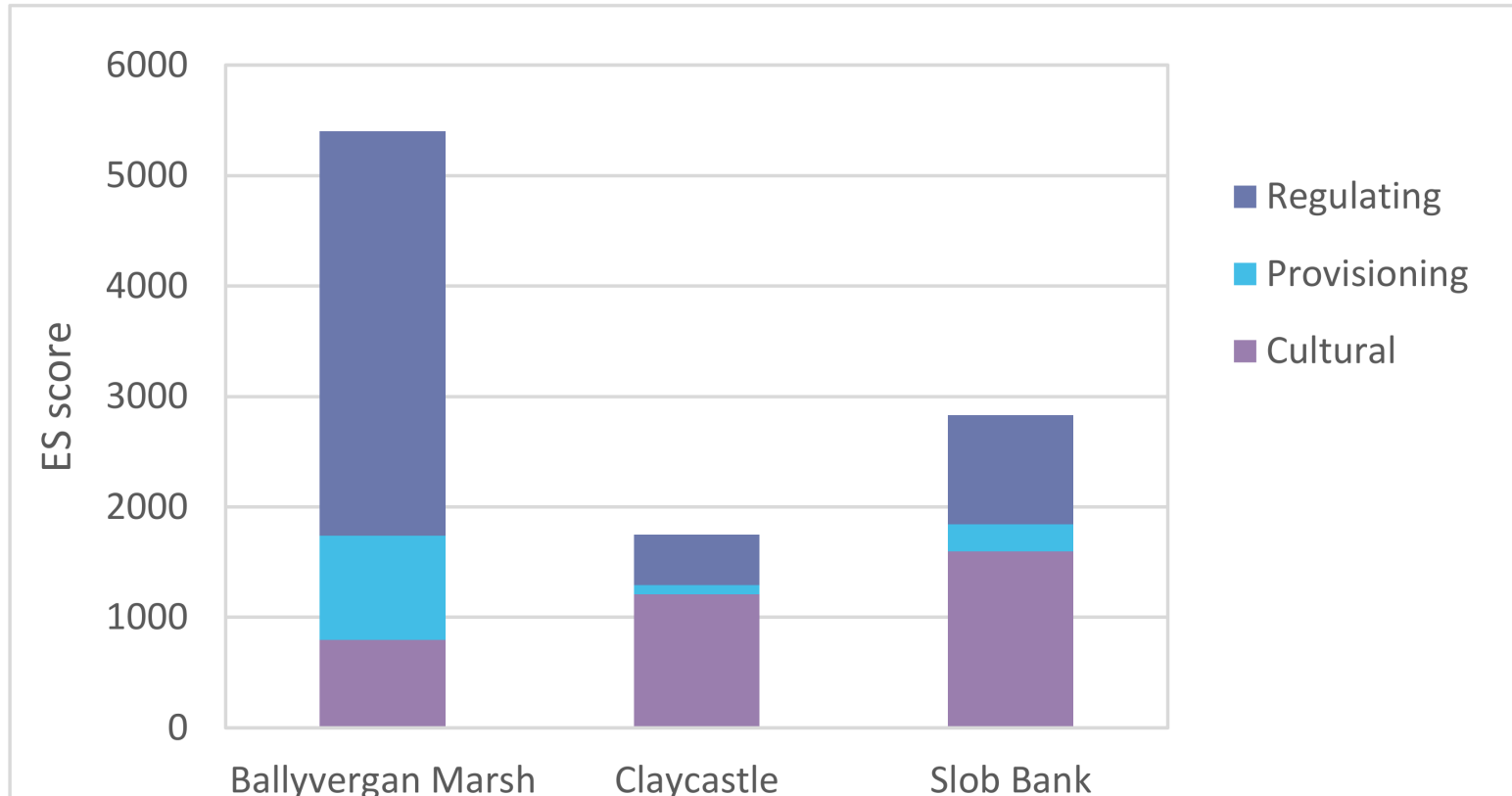
Results and Discussion

Figure 5. Average Likert values for biotic and abiotic ecosystem services considered important or extremely important in the study area



Results and Discussion

Figure 7. Aggregated abiotic and biotic ecosystem service values for the three sites.



Results and Discussion

What we found?

- 60% of respondents were unwilling or unable to respond. Our data and comments from public survey indicate that this was due to inaccessibility of the language rather than lack of engagement with the subject
 - How much do public know about regulating services?
 - How much does EPA know about cultural services in the area?

A clear requirement to improve the language for improved public communication

- Most highly valued ES was pollination (not a final ES, double counting?) followed by suite of cultural services

Possibly due to ease of understanding, without requirement for complex processes, e.g. water quality regulation

Results and Discussion

What we found?

- Learning from the success of the All-Ireland Pollinator Plan and the Rice of Albufeira good practice in the Delta Lady project, highlighting services of particular importance to a region (keystone ES) and directing extensive efforts to communicate this importance with the public is vital.

This methodology made some very simplistic assumptions about the value of different classifications of ES – Assuming highest valued cultural ES was equal to the highest valued regulating ES. Difficult to compare when quantifying.

Large number of respondents required to inform development decision.



Delta Lady

Interreg Europe



European Union
European Regional
Development Fund

Thank you!

Questions welcome