



MANUMIX
Interreg Europe



European Union
European Regional
Development Fund

3rd Learning Pillar: Monitoring and evaluation

**Welsh Government/Nesta/
Innovation Advisory Council for Wales**

- | 3rd Learning Journey in Vilnius

Welsh Government – Gavin George

Gavin.George@gov.wales

IACW – David Notley

d.notley@impact-innovation.co.uk

Nesta – Kostas Stathoulopoulos

konstantinos.stathoulopoulos@nesta.org.uk

[\(Apologies – Greg Green\)](#)

Monitoring and indicators

Visualisation and reporting

Introduction to the topic:

- Data visualization is a process that (a) is based on qualitative or quantitative data and (b) results in an image that is representative of the raw data, which is (c) readable by viewers and supports exploration, examination, and communication of the data (Azzam et al., 2013, p. 9).
- Different mechanisms could be use for **visualising and reporting qualitative or quantitative data but the main focus should be on communicating results to stakeholders**

Proposed partners to introduce the topic: Wales Government

Orientation for the presentation:

- Presentation focus on new methods for visualising results of evaluation and how to communicate this results to stakeholder.
- A reflection about how to visualise the results of innovation policy-mixes will be very welcome

Data Visualisation - WG

The aim of information visualisation is to take a dataset, and from this generate an accurate visual representation of the data.

The purpose of this is **to communicate the information in an easy to understand way**, to allow the user a full overview of the data at one time, and to afford the viewer the opportunity to explore the data in a way that highlights patterns and relationships without obscuring the original underlying data itself.

(Azzam et al.)

EU Funds National Data presentation

EU Funds: Investing in Wales

EU funds* are supporting growth and jobs, creating sustainable economic, social and environmental benefits for people, businesses and communities in Wales.

18,645 Enterprises Assisted
11,925 Enterprises Created

36,970
Jobs Created

72,700

Helped
into work

56,055

Into further
learning

234,335

Qualifications
gained

www.gov.wales/eu-funding



@wefocymru @wefowales

*Data as of 31/07/16 refers to EU projects supported through the European Structural Fund programmes 2007-2013

© Crown Copyright 2016



Regional Data presentation

EU Funds: Investing in Swansea

EU funds* are supporting growth and jobs, creating sustainable economic, social and environmental benefits for people, businesses and communities in Swansea.

2,170 Enterprises Assisted
1,160 Enterprises Created

3,790
Jobs
Created

7,120
Helped
into work

6,300
Into further
learning

19,000
Qualifications
gained

www.gov.wales/eu-funding



@wefocymru @wefowales

*Data as of 31/07/16 refers to EU projects supported through the European Structural Fund programmes 2007-2013

© Crown Copyright 2015



International Data presentation (FP/ H2020)

Wales international collaborative projects



Priority sector/programme Data presentation

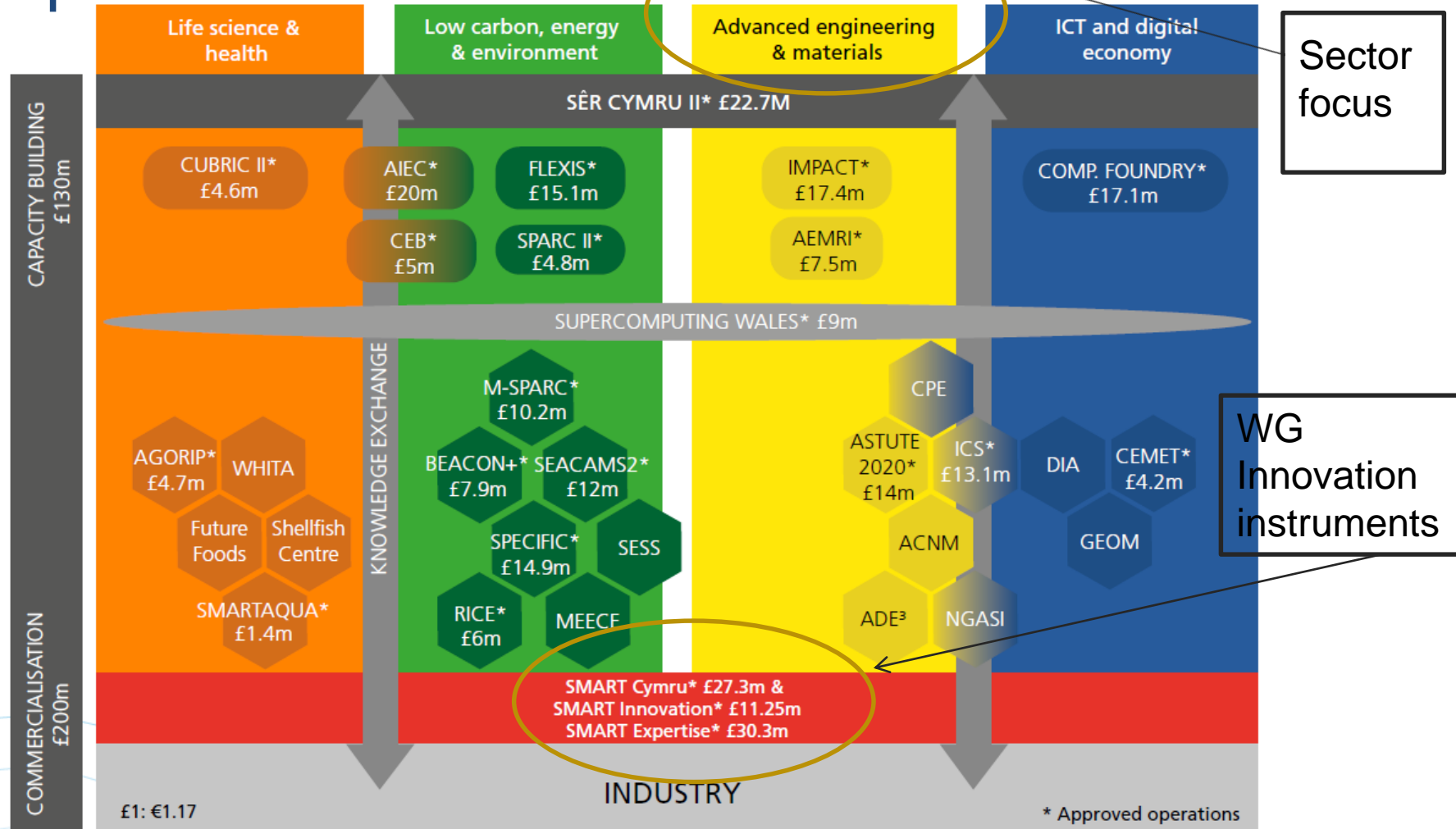
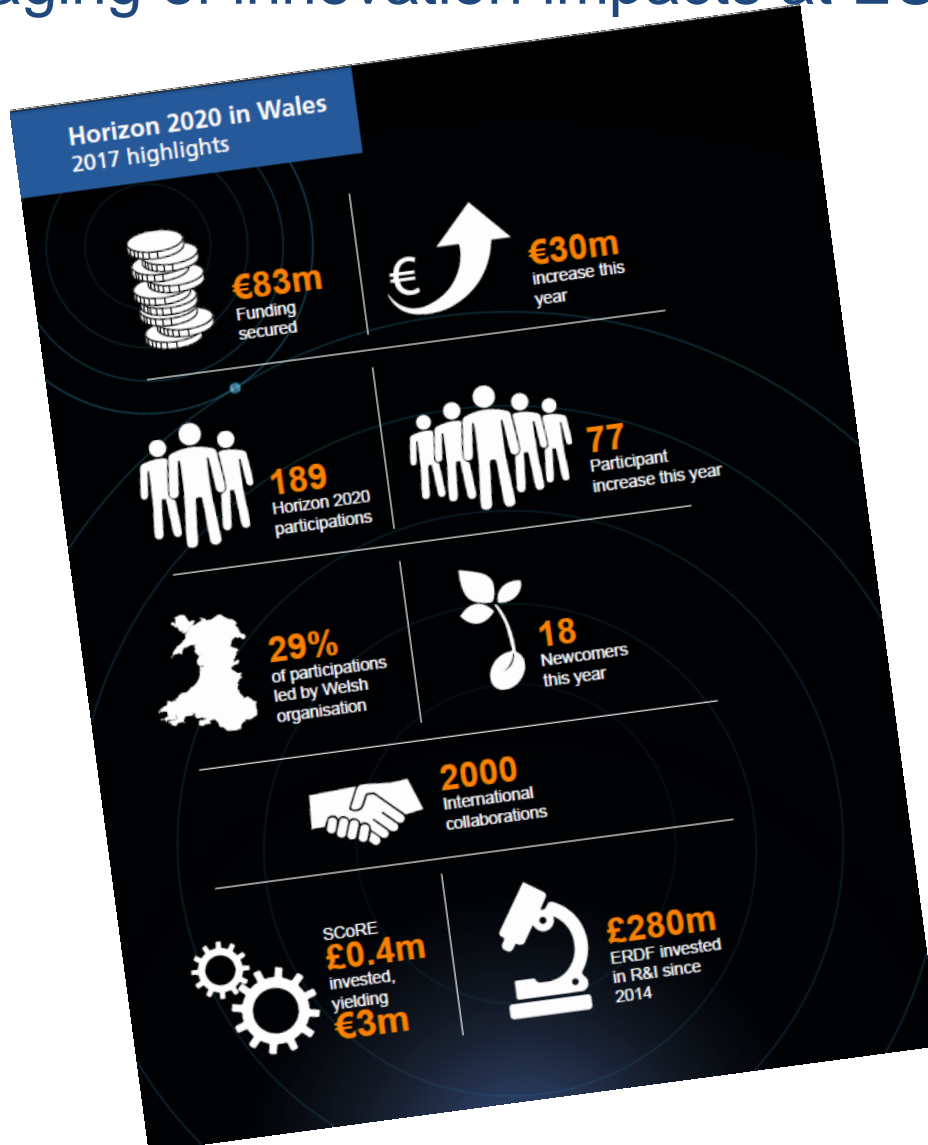


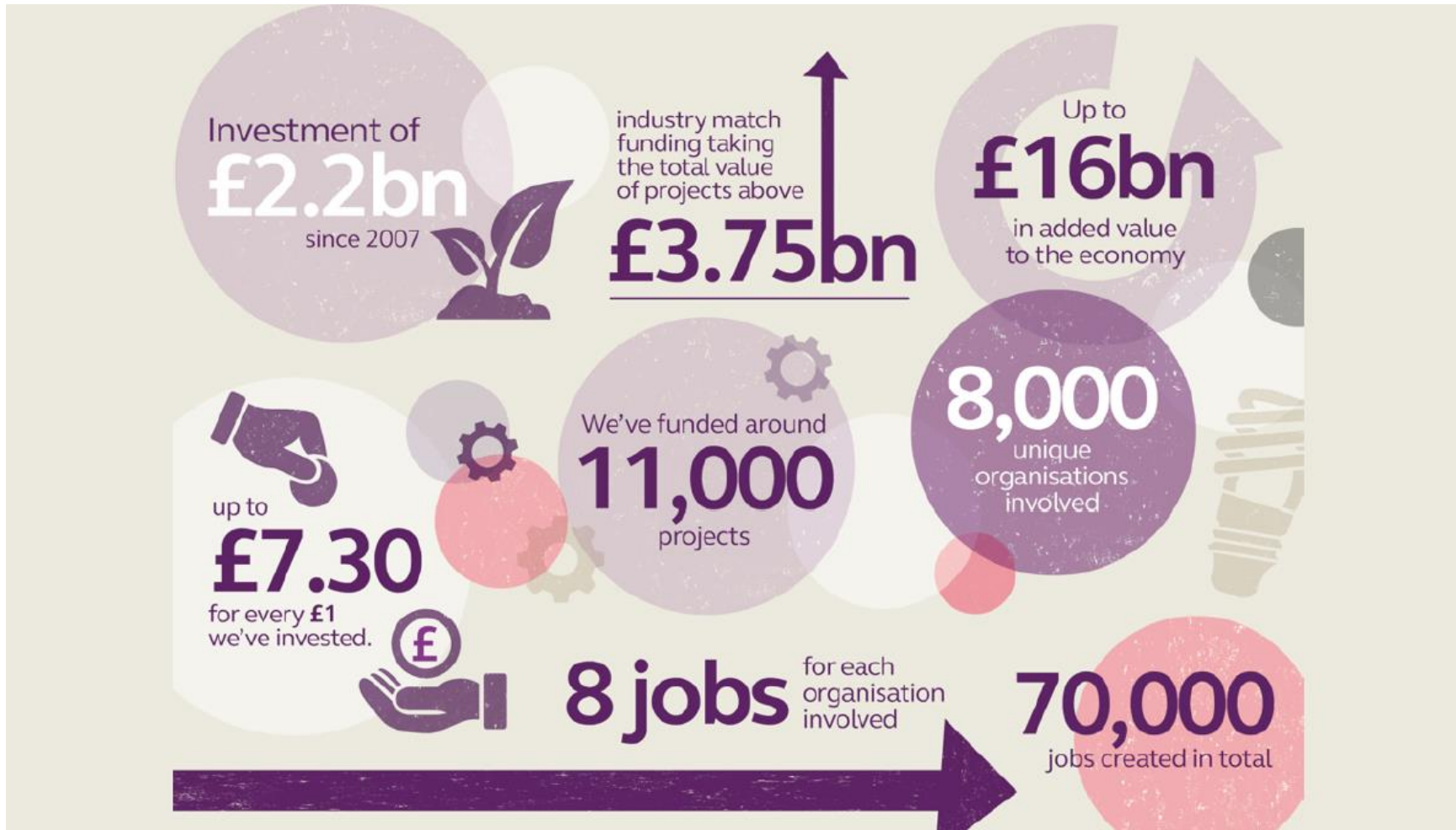
Figure 9 – ERDF research and innovation portfolio²³

21. £5m EU funding boost for Bangor University <http://gov.wales/newsroom/environmentandcountryside/2018/180118-5m-eu-funding-boost->

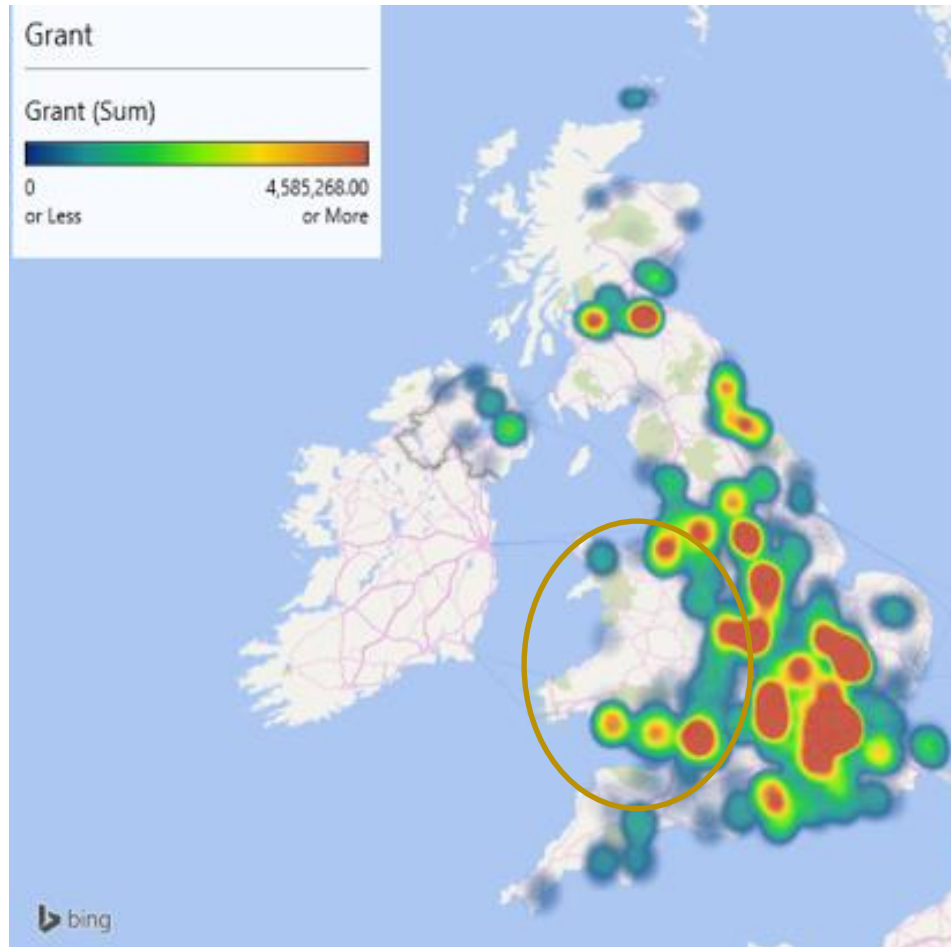
Messaging of innovation impacts at EU H2020 to Wales level



Data visualisation to stakeholders (IUK): Value and impact of innovation messaging of innovation impacts at UK level



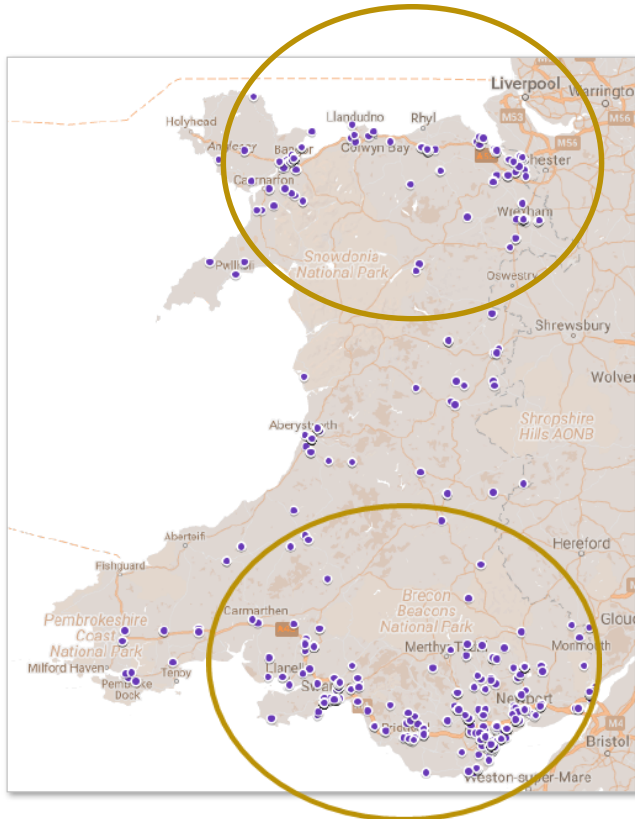
Example - Heat map. Where National funding has gone
– money awarded. Helps identify regional differences



National Innovation funding - Cluster map.

Wales project data

Regional and geographic data

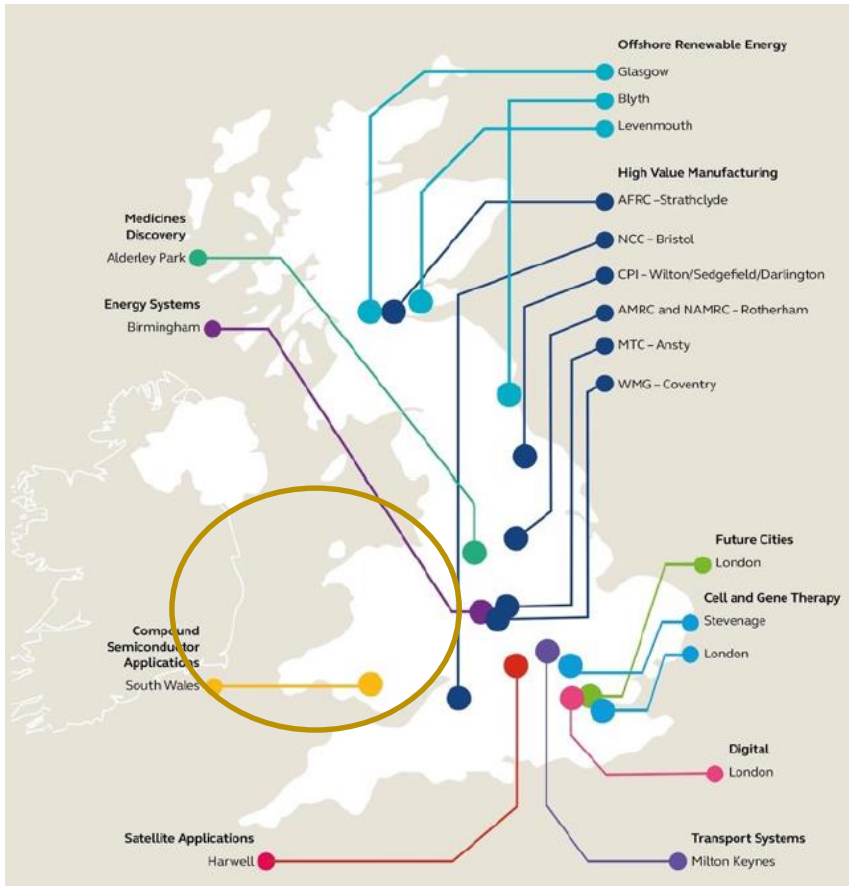


Project partners in all sectors
over the last 10 years

864 projects
>900 project partners
£108m allocated

Where Wales contributes in National innovation networks:

Compound semi conductor Catapult – putting Wales on the map.



CATAPULT
 Compound Semiconductor Applications



CATAPULT
 High Value Manufacturing



CATAPULT
 Offshore Renewable Energy

Types of innovation support instruments from Innovate UK (some co-funded by Wales)

01/01/2016 00:00
Innovate UK Projects



Arloesiadur (*'Innovation Dashboard'* in Welsh)

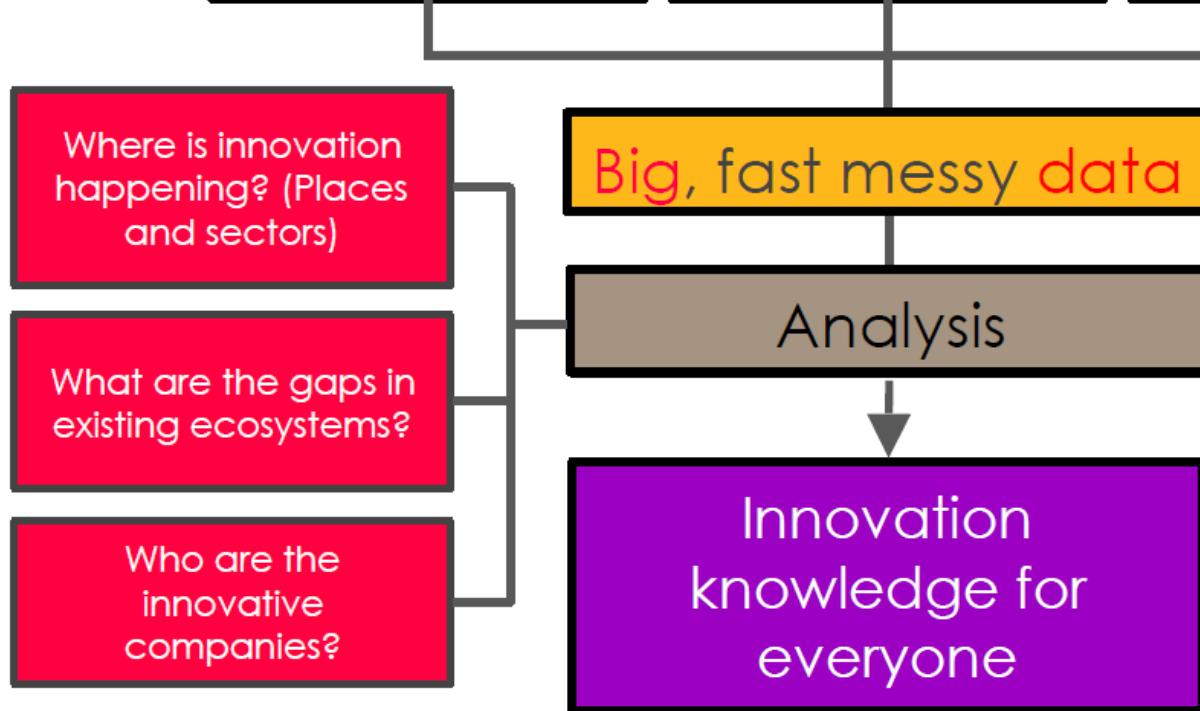
An innovation analytics project

Arloesiadur is a new Nesta project supported by Welsh Government, where we will create a data engine to automatically access, combine and analyse data to inform innovation policy in Wales.

This engine will power an online platform where users can access and interact with the data.

Innovation analysts and policymakers have for long struggled with existing data sources about economic activity, such as business and labour surveys.

This is in great part because of their interest in novelty (new ideas, businesses, industries, communities, places etc.) created by complex networks of people, organisations and knowledge.



Arloesiadur.



By collecting data from multiple sources information, data becomes more valuable for policy makers.

Some questions we can address

How have different industries evolved in Wales and its local economies?

In what industries do we detect a comparative advantage?

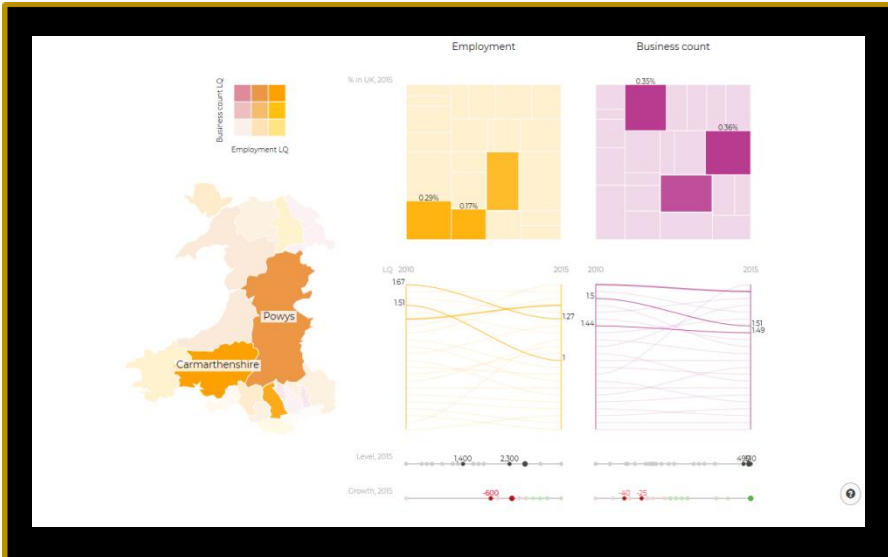
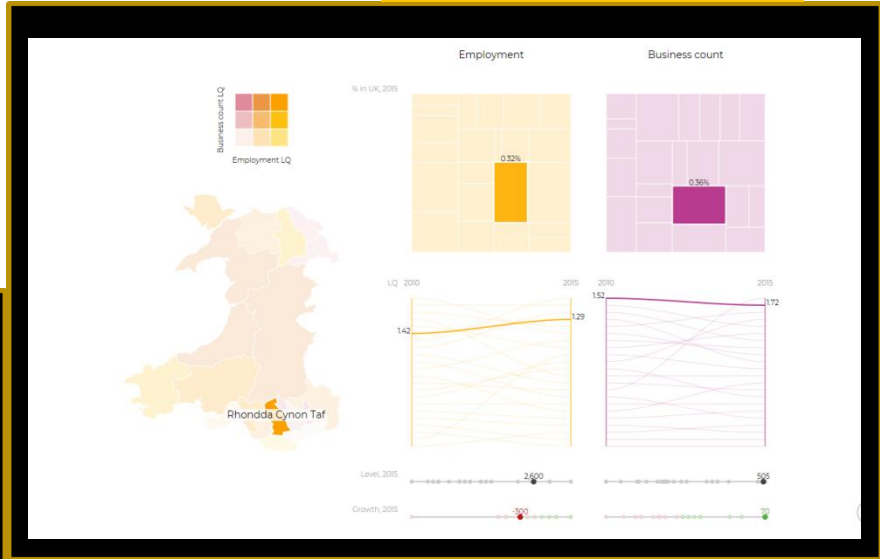
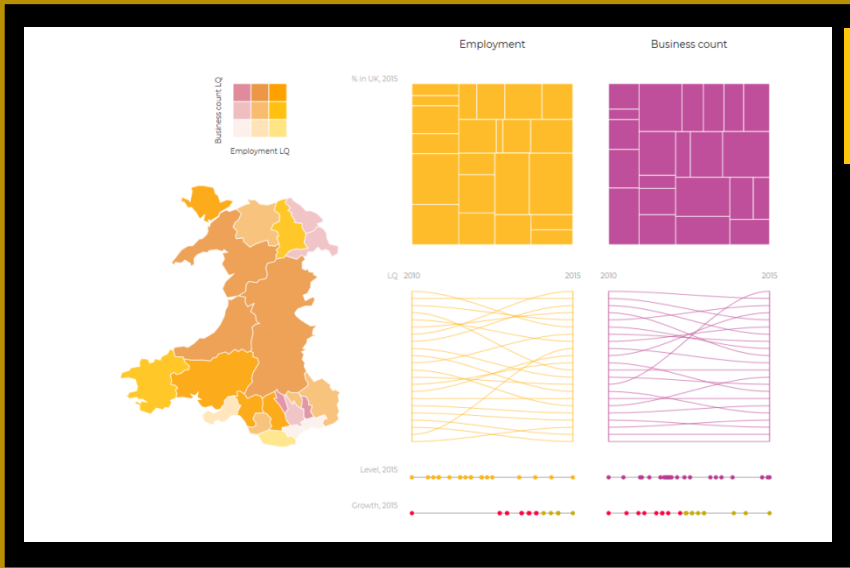
What industries cluster together?

Are local economies diversified (resilient) or fragile? What comes next?

GIS presentation of data – innovation dashboard

National performance

Details for Local Authority/Council



Comparative data and trends against your neighbours/other regions