



PROGRESS
Interreg Europe



European Union
European Regional
Development Fund

**STATE OF ACTION PLANS
PRESENTATIONS
Barcelona, 23.3.2023**

**BETTER INTEGRATION OF
ECOSYSTEM SERVICES IN
TERRITORIAL DECISION-MAKING**

23 March 2023 • PROGRESS Final Event

Summary

- Action Plan of Hungary
- Action Plan in Catalonia
- Action Plan in Latvia
- Action Plan in Tuscany
- Action Plan for the Eastern and Midland Regional Assembly, Ireland
- Action Plan in Romania, Oltenia Region



PROGRESS
Interreg Europe



Action Plan of Hungary

Balázs KISS

TCDA

kiss.balazs@tmfu.hu

Good practice to be transferred

All Ireland Pollination Plan

National
Biodiversity
Data Centre
A Heritage Council Programme



All-Ireland
Pollinator Plan

- Making Ireland pollinator friendly, raising awareness, pollinator protection measures, wide publicity.
- Is supported by 108 organisations and over 230 businesses across Ireland. It has directly influenced the development of pollinator strategies published in Scotland (2017), Norway (2018) and the Netherlands (2018), while collaborate with the EU Pollinator Initiative.

Why is it important for Hungary

AIPP

- No coordinated action so far in pollinator protection. The adaptation of the AIPP or similar pollinator protection measures even in small steps, or as possible additional activities would be an adequate answer to the dwindling numbers of pollinators. Important note that the focus of the policy instrument is to support investments into green and blue infrastructure, support National Parks in their investments, and contribute to necessary infrastructure in several risk-mitigation areas, such as inland water, or floods.

Relation to the Policy Instrument

ENVIRONMENTAL AND ENERGY EFFICIENCY OPERATIONAL PROGRAMME (EEEOP) 2021-2027

- The programme aims to support sustainable growth and contribute to achieving the Europe 2020 targets for smart, sustainable and inclusive growth. It improves flood protection, provides better waste and wastewater management services and good quality drinking water to more residents, help protect natural habitats and species, and it should improve energy efficiency and the use of renewable energy sources.
- The OP targets the development of green infrastructure and restoration of degraded ecosystems and protected natural values and areas of Community importance in order to improve its nature conservation status.

Actions performed

- Green and blue infrastructure call for applications development supported by TCDA



PROGRESS

Interreg Europe



European Union
European Regional
Development Fund

Thank you!

Questions welcome



PROGRESS
Interreg Europe



European Union
European Regional
Development Fund

Action Plan in Catalonia

Enrique Doblas

CREAF

e.doblas@creaf.uab.cat

Good practice to be transferred

All Ireland Pollination Plan



All-Ireland
Pollinator Plan

- Making Ireland pollinator friendly, Raising awareness, Managed pollinators, Expanding our knowledge.
- Is supported by 108 organisations and over 230 businesses across Ireland. It has directly influenced the development of pollinator strategies published in Scotland (2017), Norway (2018) and the Netherlands (2018), while collaborate with the EU Pollinator Initiative.

The Green Office

- Setting up a team, dedicated to protect and maintain the ecosystem of a given area within a city by carrying out administrative tasks, import practices and raise awareness.
- Involved into several international co-operations. Wide-range of interventions: green space management, energy efficiency in public buildings, green roofs, awareness-raising programs and activities, festival events...



Why is it important for the Catalonia Region

AIPP

- The governmental Plan will be better integrated to societal needs, more accepted, and most likely more successful.
- We all are beneficiaries of a healthy environment supporting the provision of ecosystem services.

Green Office

- Some municipalities have already taken steps to do so, but there are very few of them, and they are still very isolated cases.
- It may facilitate the labour of provincial councils and focus missions at lower scales, smoothing the participation of stakeholders in the process.

Relation to the Policy Instrument

NATURAL HERITAGE AND BIODIVERSITY STRATEGY OF CATALONIA 2030

- Incorporating the AIPP approach has been one of the keys to the success of the Irish Pollinators Plan 2015-2020. Catalonia wants to integrate communication and actor's engagement immediately before the drafting of the **Conservation of Wild Pollinators Plan** begins. Also, it will generate a public opinion on the subject in Catalonia, which ensures better participation during the process of drawing up the Plan.
- Local authorities can carry out initiatives for the protection and conservation of small natural areas that are crucial for creating a resilient territory, always with the involvement of the most immediate neighbourhood. The Action was not conceived to create any new office, but it is mentioned that **organised initiatives by civil society are essential for raising awareness of the importance of conserving natural heritage.**

Actions performed

AIPP

- The process of elaboration of the Plan begun in 2021 with the elaboration of a Diagnosis Report on the situation of wild pollinators in Catalonia. CREAM will participate in the different **worktables planned to draft the Plan** to transfer the AIPP in order to include communication campaigns and consider the integration of citizens concerns. Worktables were planned for 2022, but have been delayed to spring 2023.

Green Office

- CREAM would make good use of this same event attendees related to the Barcelona City Council in order to facilitate the necessary agreements with city districts prone to collaboration.



PROGRESS

Interreg Europe



European Union
European Regional
Development Fund

Thank you!

Questions welcome



PROGRESS
Interreg Europe



Action Plan in Latvia

Janis Zvirgzdins

Riga Technical University

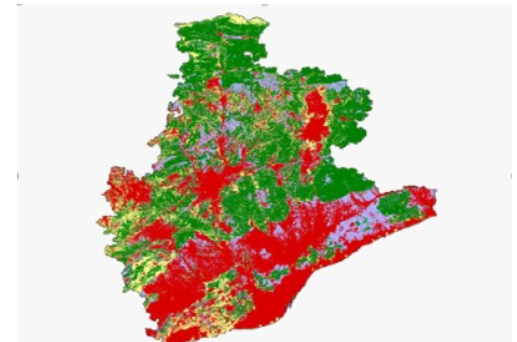
Janis.Zvirgzdins_1@rtu.lv

Good practices to be transferred (success story)

- National Ecosystem and Ecosystem Service Mapping Pilot for a Suite of Prioritised Services
 - Territorial Information System for the Network of Open Areas in the province of Barcelona (SITxell)
 - Environmental Sensitivity Mapping (ESM) - Webtool to Support Strategic Environmental Assessment and Plan-making
- ❑ **PI1 ENVIRONMENTAL POLICY GUIDELINES 2021 – 2027**
- Task 20.1. Adaptation of ecosystem services assessment approach and preparation of ecosystem services mapping and assessment for the territory of Latvia
 - Resulting indicator 6.2.3. Mapping of ecosystem services for the territory of Latvia has been prepared.
- ❖ Sustainable Development Strategy of Latvia until 2030
 - ❖ National Development Plan of Latvia for 2021-2027
 - ❖ EU Biodiversity Strategy 2030
- Commits to legally protect a minimum of 30% of the EU's land area and 30% of the EU's sea area and integrate ecological corridors, as part of a true Trans-European Nature Network. Strictly protect at least a third of the EU's protected areas, including all remaining EU primary and old-growth forests. Effectively manage all protected areas, defining clear conservation objectives and measures, and monitoring them appropriately.



Brandon Bay, County Kerry



ServicesMap, CREAF, by Mr. Joan Pino and Ms. Corina Basnou



Features of the ESM Webtool, Source: Ainhoa González

Actions performed

- **Policy instrument:**

ENVIRONMENTAL POLICY GUIDELINES 2021 – 2027

- **Practical action:**

Implemented project «**Preparation of proposals for the coverage of protected areas for the extension of protected areas in the terrestrial territory of Latvia in accordance with the EU Biodiversity Strategy 2030**» with goal: prepare a proposal for a network of protected areas in Latvia in accordance with EU Biodiversity Strategy 2030, extending the coverage of protected areas to 30% of Latvia's land area

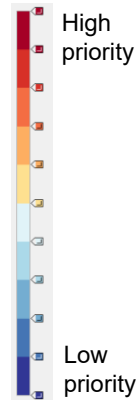
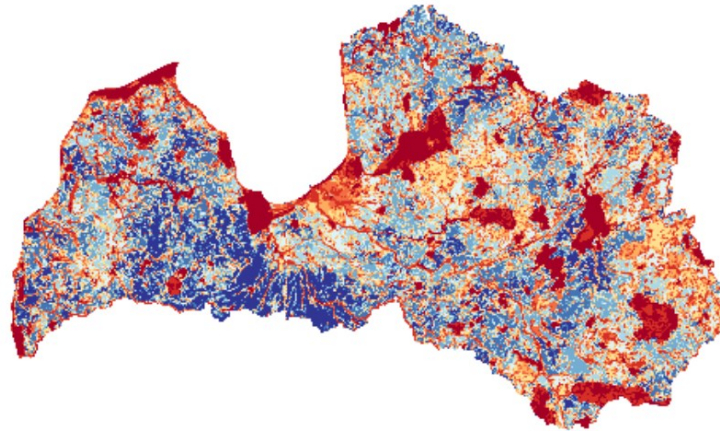
Results of the project

- An **analysis tool has been developed** that processes data according to a methodology that represents up to 30% of Latvia's land area extended potential of protected network of nature areas.
 - Automated operation of the analysis tool is ensured to minimise staff involvement
 - The possibility for staff to correct the analysis variables without IT knowledge.
- **Indicative map of protected areas** has been modeled at national level (map grid cells of at least 1 km²) describing the potential area to achieve the extension of the protected areas network to 30%.

Criteria for drawing up the indicative map:

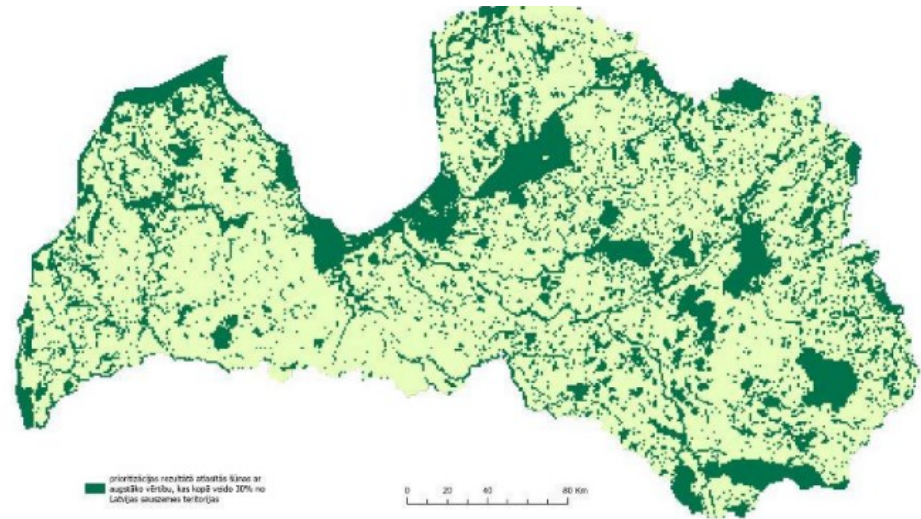
1. Ecological value
 - 1.1. Biodiversity
 - 1.2. Ecosystem services (climate control, flood control, filtration/accumulation, habitat maintenance)
2. Economic importance (costs)
3. Special Protection Areas - protected by legislation

Indicative maps



Priority range of the areas for inclusion in the protected area network

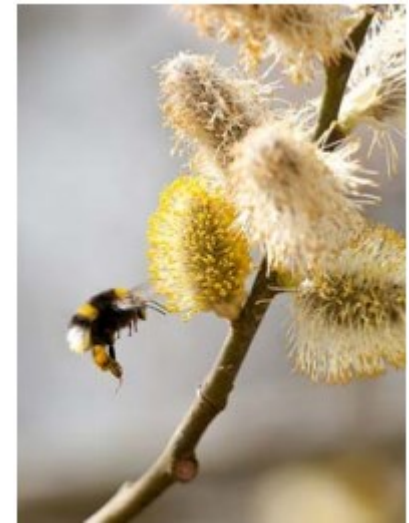
Modeled indicative map of protected areas (30% of Latvia's land area)



Good practice to be transferred (partly success story)

- All Ireland Pollination Plan
- ❑ **PI2 STRATEGIC PLAN OF THE COMMON AGRICULTURAL POLICY OF LATVIA, 2023-2027**
- Specific aim 6 (SM6 V6) - Facilitate plant pollination by promoting implementation of sustainable agricultural practices
- ❖ EU Natural Renewal Plan
- ❖ EU Farm to Fork Strategy
- ❖ EU Save Bees and Farmers
- ❖ EU Common Agricultural Policy (CAP)
- ❖ EU Environmental and Climate Goals
- ❖ EU Biodiversity Strategy 2030

Focus on the goal to reverse the decline of pollinator populations.



Bombus lucorum 'the white-tailed bumblebee'
Photo by Mr. Tom Cuffe



AIPP Stakeholders, County Cork. Source: Dr Úna Fitzpatrick, AIPP Co-Ordinator

Actions performed

- **Policy instrument:**

STRATEGIC PLAN OF THE COMMON AGRICULTURAL POLICY OF LATVIA, 2023-2027

- **Action:**

Applied project LIFE BEEscapes which aims to reverse the decline of pollinators in Baltic States by decreasing the effects of anthropogenic landscape changes and supporting policy and decision making.

Link with IE PROGRESS: To support EU policy to tackle pollinators decline the Project will cooperate with the Interreg Europe project “PROGRESS” (PROmoting the Governance of Region Ecosystem ServiceS) to promote initiatives of policy change towards the conservation of biodiversity and the maintenance of nature’s capacity. Between the PROGRESS and LIFE BEEscapes projects there is clear coherence between the specific objectives of both projects and a strong potential for collaboration and intervention to develop recommendations for Common Agricultural Policy to consider the pollinator needs and practically and economically promote and support the presence and wellbeing of the pollinating insects in their role regarding sustainable management of agroecosystems. The cooperation will promote the initiation of policy change processes by improving the implementation of policy instruments dedicated to the preservation of biological diversity and the protection of functioning of nature ecosystems and their services in the agricultural sector.

Status – reserve list

- «Having completed the evaluation, we would like to inform you that — although it has in principle received a favorable evaluation — your proposal is unfortunately currently not high enough in the ranking to be funded (given the budget limit of the call). Your proposal has however been put on the reserve list (proposals that might be invited to grant preparation if higher ranked proposals drop out or additional funding becomes available). In this case, we would contact you and invite you for grant preparation.»



PROGRESS

Interreg Europe



European Union
European Regional
Development Fund

Thank you!

Questions are welcomed!



PROGRESS
Interreg Europe



European Union
European Regional
Development Fund

Action Plan in Tuscany

Besnik Mehmeti

ANCI Toscana

Besnik.Mehmeti@ancitoscana.it

PRomoting the Governance of Regional
Ecosystem ServiceS

Action Plan in Tuscany

February 2022



- **Background**
- **Action**
- **Stakeholders involved**
- **Timeframe & funding**

Background

Main challenge: Relaunch the economy of rural and mountain areas by enhancing agricultural productions while preserving the biodiversity of species and habitats.

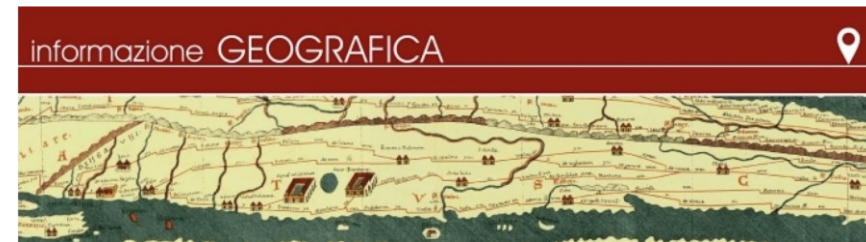
Identified solution: Account the ESs provided by inland and mountain areas and invest in PES to ensure sustainable practices and the regeneration of ecosystems and resources.

Background

Good Practice identified



Transfer of the Good Practice



Opportunity to quantify and evaluate ecosystem services by implementing additional functionalities in the Integrated Regional Information Ecosystem for the Government of the Territory of the Tuscany Region



Action

The transfer of **SITxell** responds to the following strategic objectives of the **Regional Development Plan of the Tuscany Region 2021-2025**:

- Strategic objective 5. Making communities and territories resilient, managing natural resources in a sustainable way and enhancing ecosystem services
- Strategic objective 6. Protect the territory and the landscape, in particular to the Area 2. Ecological transition

Learnings from SITxell to be embedded in the Regional Project «Policies for the mountains and inland areas».

Stakeholders involved

Administrative coordination: Tuscany Region

Technical coordination: ANCI Toscana;

Data providers (regional bodies): Tuscany Region, Park authorities, Land reclamation consortia, basin authorities, Regional Agency for Environmental Protection of Tuscany (ARPAT), Tuscan Regional Agency for disbursement in agriculture (Artea) - Regional Programming Institute Economics of Tuscany IRPET, Universities of Florence, Pisa and Siena.

Data providers (national bodies): Ministry of Ecological Transition (MiTE), Higher Institute for Environmental Protection and Research (ISPRA), National Institute of Statistics (ISTAT).

Timeframe & funding

Timeframe: 1st August 2022 - 31st December 2024

Costs: Costs to be evaluated considering the data already available in the Regional Information Ecosystem and the costs for building SITxell in Catalonia (2 MEuro for the data acquisition and 50 kEuro/year for their update).

Funding sources:

- Regional Development Program of the Tuscany Region 2021-2025 (Area 1- Digitization, innovation and competitiveness of the Tuscan system, Area 7 - Interinstitutional relations and governance of the regional system)



PROGRESS

Interreg Europe



European Union
European Regional
Development Fund

Thank you!

Questions welcome



Tionól Reigiúnach Oirthir agus Lár-Tíre
Eastern and Midland Regional Assembly



PROGRESS
Interreg Europe

Owen Douglas

EMRA

odouglas@emra.ie



European Union
European Regional
Development Fund

Action Plan for the Eastern and Midland Regional Assembly (IRE)

Good practice to be transferred

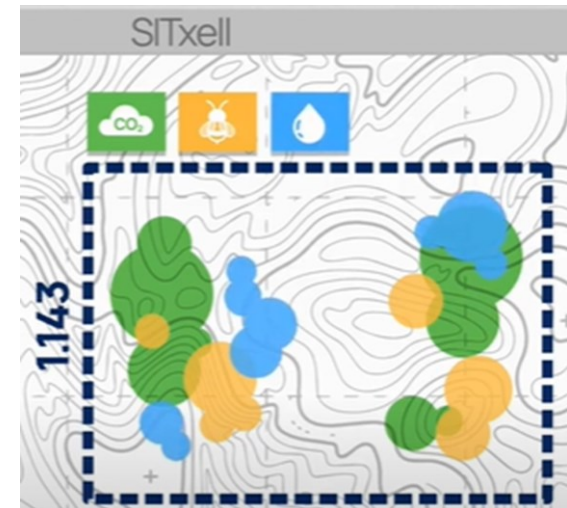
Territorial Information System for the Network of Open Areas in the province of Barcelona (SITxell)

- A cartographic and alphanumeric database organised into thematic modules used to define intrinsic and strategic ecosystem services.
- The tool has influenced the process of territorial planning in the Barcelona region, both at the municipal and regional levels, by providing accurate, reliable and up-to-date information, as well as planning criteria, to plans and projects prepared by public administrations.
- Incorporates the identification, mapping and evaluation of direct and indirect benefits that ecosystems contribute to people's well-being.



Why is it important for the EMRA Region

- No standardised Ecosystem Service (ES) or Green Infrastructure (GI) methodology or mapping approach has been advanced for local authorities in the EMRA region.
- The transfer of SITxell can assist in providing the vision for ES and GI mapping in the region.
- Specifically, it can help to support the definition of a standardised methodology and regional coordination for improved decision making for ES and GI.



Influencing the Policy Instrument

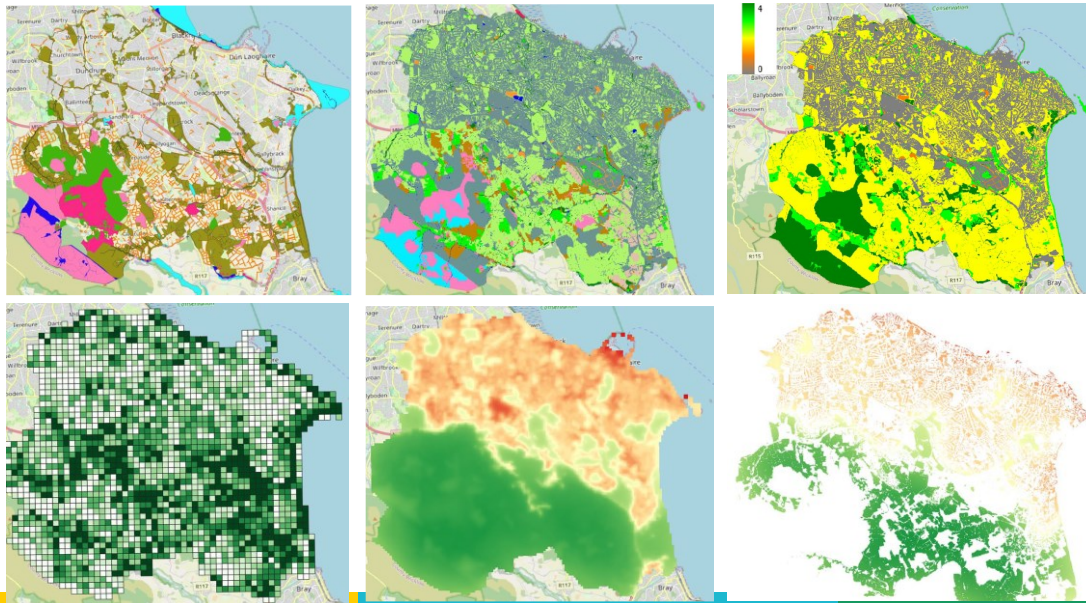
Regional Spatial and Economic Strategy for the Eastern and Midland Region 2019-2031

- Transfer of the SITxell approach can assist in the implementation of 10 Regional Policy Objectives (RPOs) contained in the RSES relating to ecosystem services, green infrastructure and riparian setbacks.
- Transfer can improve the way GI is planned, delivered and managed to maximise the provision of ecosystem services (benefits to humans) and minimise environmental degradation.



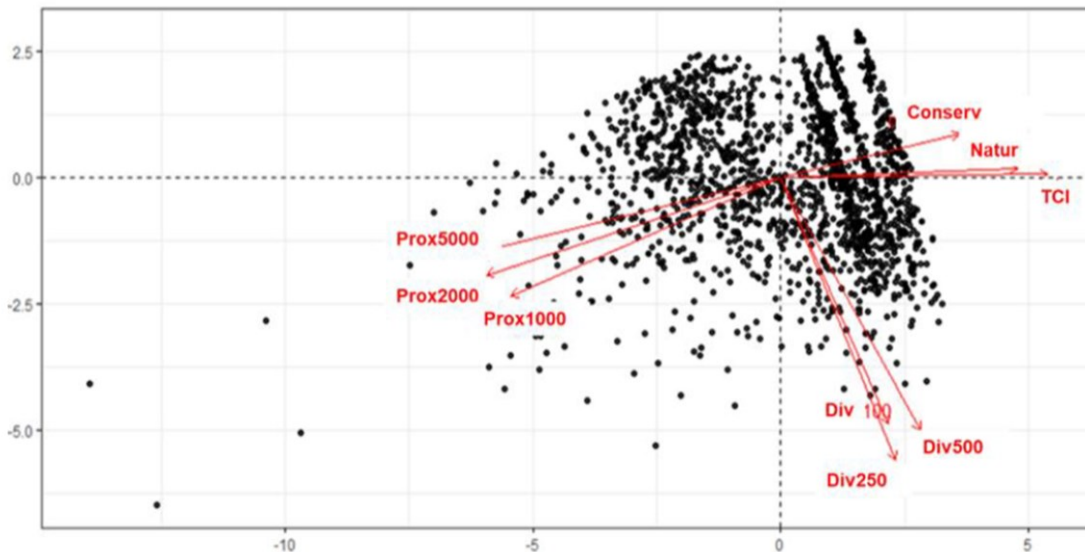
Actions performed (1)

- Implementation of the Action Plan began in September 2021 with the commencement of the project Pilot Action (Action 1) which involved testing the transfer of the SITxell methodology to the Irish context.
- A methodology was developed and criteria were established to transfer the SITxell conceptual model and methodology to an Irish Local Authority area - Dún Laoghaire-Rathdown (DLR) – EMRA, CREAM & DLR
- A range of ecosystem services for DLR were mapped on the basis of three ‘contrasting perspectives’: 1) Intrinsic value, 2) Functional value, and 3) Leisure/Cultural value.



Actions performed (2)

- The Pilot Action also tested whether these three dimensions might be combined in order to identify the areas maximizing the sum and the diversity of values.
- The Mapping Approach was evaluated by target users at 2 dedicated workshops in January 2022 and it was determined that the methodology and mapping approach was both effective and appropriate to contribute to the development of a coordinated approach for ES and GI mapping in the Dublin Metropolitan Area.



necessary
innovative

good first approach

shareable layers

learning

progressive

opportunity

useful

strategic

a good start

adaptable

Actions performed (3)

- We have identified appropriate regional structures that will ensure RSES policy for Ecosystem Services and Green Infrastructure is better implemented – **RSES Implementation Groups**
- Action Plan focuses on the Dublin Metropolitan Area, *however ongoing engagement with key stakeholders across the entire Eastern and Midland Region.*
- In line with the Action Plan, 2 meetings/workshops involving the implementation groups have been convened to discuss challenges, opportunities and funding opportunities.
- **Implementation of the Action Plan has firmly placed ES and GI mapping on the regional agenda.**



Tionól Reigiúnach Oirthir agus Lár-Tíre
Eastern and Midland Regional Assembly



PROGRESS
Interreg Europe



European Union
European Regional
Development Fund

Regional GI Coordination Meeting via Microsoft Teams
12 December 2022 // 10.00am – 12.00pm (Irish time)

Summary and Issues Emerging



Green Infrastructure Decision Support Mapping Approach for
Ecosystem Services

Technical development of a green infrastructure decision support mapping
approach for ecosystem services in Dún Laoghaire-Rathdown (DLR) using the
SITxall territorial mapping approach

Final report



Janis Corbett
Joan Finn
CREAF, May 31st 2022



PROGRESS

Interreg Europe



European Union
European Regional
Development Fund

Thank you!

Questions welcome



PROGRESS
Interreg Europe



European Union
European Regional
Development Fund

Action Plan in Romania (Oltenia Region)

Ștefănescu Dragoș Mihail

University of Craiova

Good practice to be transferred

Forest Ecosystem Services Mapping and Assessment Methodology

In Latvia, forests are the most widespread terrestrial ecosystems, the forest cover being 53%. Apart from timber resources, forests provide a number of other ecosystem services (ES), many of which in the opinion of the society are more important than wood. The aim of the Forest Ecosystem Services Mapping and Assessment Methodology (FESMAM) is to spatially map and evaluate the various benefits provided by forests, as well as the changes in the provided ecosystem services over time and in the result of anthropogenic intervention, e.g., different forest management operations. To systematize the ES, the Common International Classification of Ecosystem Services (CICES, v.5.1, 2020) was used. For the spatial evaluation of the ES, matrix model was applied (Burkhard et al. 2009, 2012, 2014). It is a flexible approach which is able to deliver comparable results in various spatial scales, depending on the geospatial units used.

Why is it important for the Oltenia Region

Ecosystem services are increasingly integrated in land use planning. Many countries have already incorporated the process of evaluation of ecosystem services in their national assessments following the MAES (Mapping and Assessment of Ecosystems and their Services), process which requires countries to make national assessments of ecosystem services.

Mapping and evaluation of ecosystem services in Natura 2000 sites can help to identify areas of high potential for ecosystem services delivery or for demand for ecosystem services, this information being essential as well for developing comprehensive and strategic development plans.

We aim to bring an improvement of management plans of Natura 2000 areas in our region / country, by including as mandatory the identification, assessment and mapping of ecosystem services, an initiative acquired in the PROGRESS project learning process through the inter-regional exchange of good practices between the partners of different regions.

Relation to the Policy Instrument

Romanian Policy
Instrument



The Large Infrastructure Operational Programme (LIOP)



The present Action Plan is targeting on **Priority Axis 4** of this policy instrument, *Environmental protection by taking measures to preserve biodiversity, air quality monitoring and de-contamination of historically contaminated sites, SO 4.1., Increasing the degree of protection and conservation of biodiversity and restoring degraded ecosystems.*

Actions performed

The action plan is ongoing, in close connection with our stakeholders, and involves, in addition to data collection mapping and assessment of forest ecosystem services in six Natura 2000 areas in the Oltenia region, according to Latvian good practice protocol.



PROGRESS

Interreg Europe



European Union
European Regional
Development Fund

Thank you!

Questions welcome

Panel 2 - Mapping of Ecosystem Services

From technical
to policy
perspective

- *Gemma Weir,
National Parks and Wildlife Service,
Ireland*
- *Andris Sirovs,
Director General, Latvia Nature
Conservation Agency*
- *Anda Ruskule,
Project Manager, Baltic Environmental
Forum*
- *Daniele Mazzotta,
Territorial government, sustainable
planning and digital transition, Tuscany
Region*
- *Claudia Măgdălina ,
Ministry of Investments and European
Projects, Romania*

*Moderator: Carles Castell, Barcelona
Regional Council*

Panel 3 - City level actions

Enhancing ecosystem
services through
Nature Based
Solutions in cities
and
neighborhoods.

- *Emese Décsi,
The Green Office, City of Budapest,
Hungary*
- *Pádraig McEvoy,
Councilor, Eastern and Midland Regional
Assembly, Ireland*
- *Marc Montlleó,
Director of Environmental Projects,
Barcelona Regional Agency, Catalonia*
- *Mariona Ferrandiz,
Researcher, CREAM*

*Moderator: Enrique Doblas, Transfer Officer
CREAF*



PROGRESS

Interreg Europe



European Union
European Regional
Development Fund

Thank you!

Questions welcome



Project smedia



PROGRESS

Interreg Europe



European Union
European Regional
Development Fund

Action Plan of Hungary

Balázs KISS

TCDA

kiss.balazs@tmfu.hu

Good practice to be transferred

All Ireland Pollination Plan

- Making Ireland pollinator friendly, raising awareness, pollinator protection measures, wide publicity.
- Is supported by 108 organisations and over 230 businesses across Ireland. It has directly influenced the development of pollinator strategies published in Scotland (2017), Norway (2018) and the Netherlands (2018), while collaborate with the EU Pollinator Initiative.

National
Biodiversity
Data Centre
A Heritage Council Programme



All-Ireland
Pollinator Plan

Why is it important for Hungary

AIPP

- No coordinated action so far in pollinator protection. The adaptation of the AIPP or similar pollinator protection measures even in small steps, or as possible additional activities would be an adequate answer to the dwindling numbers of pollinators. Important note that the focus of the policy instrument is to support investments into green and blue infrastructure, support National Parks in their investments, and contribute to necessary infrastructure in several risk-mitigation areas, such as inland water, or floods.

Relation to the Policy Instrument



ENVIRONMENTAL AND ENERGY EFFICIENCY OPERATIONAL PROGRAMME (EEEOP) 2021-2027

- The programme aims to support sustainable growth and contribute to achieving the Europe 2020 targets for smart, sustainable and inclusive growth. It improves flood protection, provides better waste and wastewater management services and good quality drinking water to more residents, help protect natural habitats and species, and it should improve energy efficiency and the use of renewable energy sources.
- The OP targets the development of green infrastructure and restoration of degraded ecosystems and protected natural values and areas of Community importance in order to improve its nature conservation status.

Actions performed

- Green and blue infrastructure call for applications development supported by TCDA



PROGRESS

Interreg Europe



European Union
European Regional
Development Fund

Thank you!

Questions welcome



PROGRESS
Interreg Europe



European Union
European Regional
Development Fund

Action Plan in Catalonia

Enrique Doblás

CREAF

e.doblas@creaf.uab.cat

Good practice to be transferred

All Ireland Pollination Plan

- Making Ireland pollinator friendly, Raising awareness, Managed pollinators, Expanding our knowledge.
- Is supported by 108 organisations and over 230 businesses across Ireland. It has directly influenced the development of pollinator strategies published in Scotland (2017), Norway (2018) and the Netherlands (2018), while collaborate with the EU Pollinator Initiative.



All-Ireland
Pollinator Plan

The Green Office

- Setting up a team, dedicated to protect and maintain the ecosystem of a given area within a city by carrying out administrative tasks, import practices and raise awareness.
- Involved into several international co-operations. Wide-range of interventions: green space management, energy efficiency in public buildings, green roofs, awareness-raising programs and activities, festival events...



Why is it important for the Catalonia Region

AIPP

- The governmental Plan will be better integrated to societal needs, more accepted, and most likely more successful.
- We all are beneficiaries of a healthy environment supporting the provision of ecosystem services.

Green Office

- Some municipalities have already taken steps to do so, but there are very few of them, and they are still very isolated cases.
- It may facilitate the labour of provincial councils and focus missions at lower scales, smoothing the participation of stakeholders in the process.

Relation to the Policy Instrument

NATURAL HERITAGE AND BIODIVERSITY STRATEGY OF CATALONIA 2030

- Incorporating the AIPP approach has been one of the keys to the success of the Irish Pollinators Plan 2015-2020. Catalonia wants to integrate communication and actor's engagement immediately before the drafting of the **Conservation of Wild Pollinators Plan** begins. Also, it will generate a public opinion on the subject in Catalonia, which ensures better participation during the process of drawing up the Plan.
- Local authorities can carry out initiatives for the protection and conservation of small natural areas that are crucial for creating a resilient territory, always with the involvement of the most immediate neighbourhood. The Action was not conceived to create any new office, but it is mentioned that **organised initiatives by civil society are essential for raising awareness of the importance of conserving natural heritage.**

Actions performed

AIPP

- The process of elaboration of the Plan begun in 2021 with the elaboration of a Diagnosis Report on the situation of wild pollinators in Catalonia. CREAM will participate in the different **worktables planned to draft the Plan** to transfer the AIPP in order to include communication campaigns and consider the integration of citizens concerns. Worktables were planned for 2022, but have been delayed to spring 2023.

Green Office

- CREAM would make good use of this same event attendees related to the Barcelona City Council in order to facilitate the necessary agreements with city districts prone to collaboration.



PROGRESS

Interreg Europe



European Union
European Regional
Development Fund

Thank you!

Questions welcome



PROGRESS
Interreg Europe



European Union
European Regional
Development Fund

Action Plan in Latvia

Janis Zvirgzdins

Riga Technical University

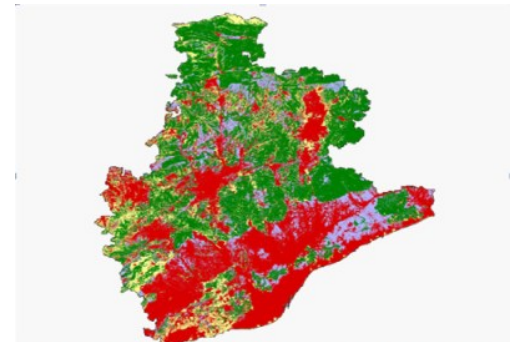
Janis.Zvirgzdins_1@rtu.lv

Good practices to be transferred (success story)

- National Ecosystem and Ecosystem Service Mapping Pilot for a Suite of Prioritised Services
- Territorial Information System for the Network of Open Areas in the province of Barcelona (SITxell)
- Environmental Sensitivity Mapping (ESM) - Webtool to Support Strategic Environmental Assessment and Plan-making
- ❑ **PI1 ENVIRONMENTAL POLICY GUIDELINES 2021 – 2027**
 - Task 20.1. Adaptation of ecosystem services assessment approach and preparation of ecosystem services mapping and assessment for the territory of Latvia
 - Resulting indicator 6.2.3. Mapping of ecosystem services for the territory of Latvia has been prepared.
- ❖ Sustainable Development Strategy of Latvia until 2030
- ❖ National Development Plan of Latvia for 2021-2027
- ❖ EU Biodiversity Strategy 2030
- Commits to legally protect a minimum of 30% of the EU's land area and 30% of the EU's sea area and integrate ecological corridors, as part of a true Trans-European Nature Network. Strictly protect at least a third of the EU's protected areas, including all remaining EU primary and old-growth forests. Effectively manage all protected areas, defining clear conservation objectives and measures, and monitoring them appropriately.



Brandon Bay, County Kerry



ServicesMap, CREAF, by Mr. Joan Pino and Ms. Corina Basnou



Features of the ESM Webtool, Source: Ainhoa González

Actions performed

- **Policy instrument:**

ENVIRONMENTAL POLICY GUIDELINES 2021 – 2027

- **Practical action:**

Implemented project «**Preparation of proposals for the coverage of protected areas for the extension of protected areas in the terrestrial territory of Latvia in accordance with the EU Biodiversity Strategy 2030**» with goal: prepare a proposal for a network of protected areas in Latvia in accordance with EU Biodiversity Strategy 2030, extending the coverage of protected areas to 30% of Latvia's land area

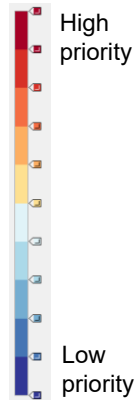
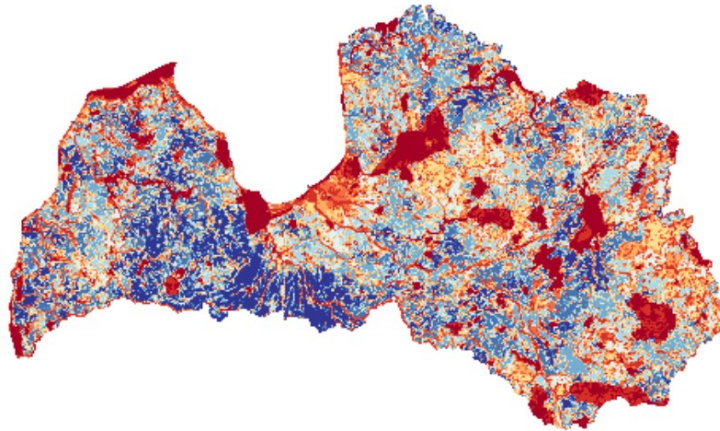
Results of the project

- An **analysis tool has been developed** that processes data according to a methodology that represents up to 30% of Latvia's land area extended potential of protected network of nature areas.
 - Automated operation of the analysis tool is ensured to minimise staff involvement
 - The possibility for staff to correct the analysis variables without IT knowledge.
- **Indicative map of protected areas** has been modeled at national level (map grid cells of at least 1 km²) describing the potential area to achieve the extension of the protected areas network to 30%.

Criteria for drawing up the indicative map:

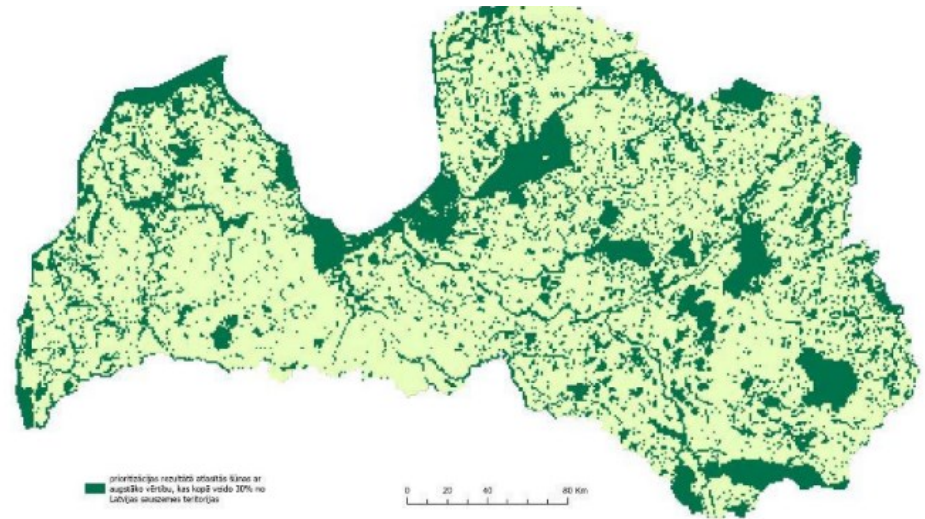
1. Ecological value
 - 1.1. Biodiversity
 - 1.2. Ecosystem services (climate control, flood control, filtration/accumulation, habitat maintenance)
2. Economic importance (costs)
3. Special Protection Areas - protected by legislation

Indicative maps



Priority range of the areas for inclusion in the protected area network

Modeled indicative map of protected areas (30% of Latvia's land area)



prioritācijas rezultāti attiecas tikai ar
suptāko vērtību, kas veido 30% no
Latvijas sauszemes teritorijas

0 20 40 60 Km

Good practice to be transferred (partly success story)

- All Ireland Pollination Plan
- ❑ **PI2 STRATEGIC PLAN OF THE COMMON AGRICULTURAL POLICY OF LATVIA, 2023-2027**
- Specific aim 6 (SM6 V6) - Facilitate plant pollination by promoting implementation of sustainable agricultural practices
- ❖ EU Natural Renewal Plan
- ❖ EU Farm to Fork Strategy
- ❖ EU Save Bees and Farmers
- ❖ EU Common Agricultural Policy (CAP)
- ❖ EU Environmental and Climate Goals
- ❖ EU Biodiversity Strategy 2030

Focus on the goal to reverse the decline of pollinator populations.



Bombus lucorum 'the white-tailed bumblebee'
Photo by Mr. Tom Cuffe



AIPP Stakeholders, County Cork. Source: Dr Úna Fitzpatrick, AIPP Co-Ordinator

Actions performed

- **Policy instrument:**

STRATEGIC PLAN OF THE COMMON AGRICULTURAL POLICY OF LATVIA, 2023-2027

- **Action:**

Applied project LIFE BEEscapes which aims to reverse the decline of pollinators in Baltic States by decreasing the effects of anthropogenic landscape changes and supporting policy and decision making.

Link with IE PROGRESS: To support EU policy to tackle pollinators decline the Project will cooperate with the Interreg Europe project “PROGRESS” (PROmoting the Governance of Region Ecosystem ServiceS) to promote initiatives of policy change towards the conservation of biodiversity and the maintenance of nature’s capacity. Between the PROGRESS and LIFE BEEscapes projects there is clear coherence between the specific objectives of both projects and a strong potential for collaboration and intervention to develop recommendations for Common Agricultural Policy to consider the pollinator needs and practically and economically promote and support the presence and wellbeing of the pollinating insects in their role regarding sustainable management of agroecosystems. The cooperation will promote the initiation of policy change processes by improving the implementation of policy instruments dedicated to the preservation of biological diversity and the protection of functioning of nature ecosystems and their services in the agricultural sector.

Status – reserve list

- «Having completed the evaluation, we would like to inform you that — although it has in principle received a favorable evaluation — your proposal is unfortunately currently not high enough in the ranking to be funded (given the budget limit of the call). Your proposal has however been put on the reserve list (proposals that might be invited to grant preparation if higher ranked proposals drop out or additional funding becomes available). In this case, we would contact you and invite you for grant preparation.»



PROGRESS

Interreg Europe



European Union
European Regional
Development Fund

Thank you!

Questions are welcomed!



PROGRESS
Interreg Europe



European Union
European Regional
Development Fund

Action Plan in Tuscany

Besnik Mehmeti

ANCI Toscana

Besnik.Mehmeti@ancitoscana.it

PRoMoting the Governance of Regional
Ecosystem ServiceS

Action Plan in Tuscany

February 2022



➤ **Background**

➤ **Action**

➤ **Stakeholders
involved**

➤ **Timeframe &
funding**

Background

Main challenge: Relaunch the economy of rural and mountain areas by enhancing agricultural productions while preserving the biodiversity of species and habitats.

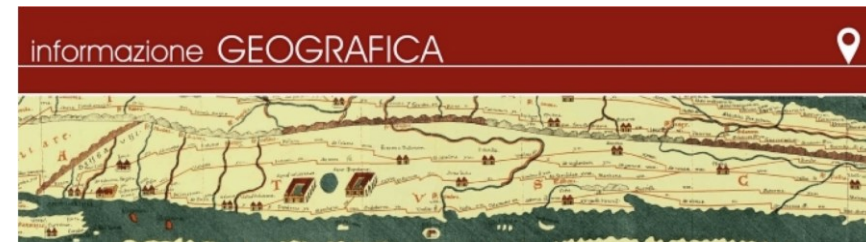
Identified solution: Account the ESs provided by inland and mountain areas and invest in PES to ensure sustainable practices and the regeneration of ecosystems and resources.

Background

Good Practice identified



Transfer of the Good Practice



Opportunity to quantify and evaluate ecosystem services by implementing additional functionalities in the Integrated Regional Information Ecosystem for the Government of the Territory of the Tuscany Region



Action

The transfer of **SITxell** responds to the following strategic objectives of the **Regional Development Plan of the Tuscany Region 2021-2025**:

- Strategic objective 5. Making communities and territories resilient, managing natural resources in a sustainable way and enhancing ecosystem services
- Strategic objective 6. Protect the territory and the landscape, in particular to the Area 2. Ecological transition

Learnings from SITxell to be embedded in the Regional Project «Policies for the mountains and inland areas».

Stakeholders involved

Administrative coordination: Tuscany Region

Technical coordination: ANCI Toscana;

Data providers (regional bodies): Tuscany Region, Park authorities, Land reclamation consortia, basin authorities, Regional Agency for Environmental Protection of Tuscany (ARPAT), Tuscan Regional Agency for disbursement in agriculture (Artea) - Regional Programming Institute Economics of Tuscany IRPET, Universities of Florence, Pisa and Siena.

Data providers (national bodies): Ministry of Ecological Transition (MiTE), Higher Institute for Environmental Protection and Research (ISPRA), National Institute of Statistics (ISTAT).

Timeframe & funding

Timeframe: 1st August 2022 - 31st December 2024

Costs: Costs to be evaluated considering the data already available in the Regional Information Ecosystem and the costs for building SITxell in Catalonia (2 MEuro for the data acquisition and 50 kEuro/year for their update).

Funding sources:

- Regional Development Program of the Tuscany Region 2021-2025 (Area 1- Digitization, innovation and competitiveness of the Tuscan system, Area 7 - Interinstitutional relations and governance of the regional system)



PROGRESS

Interreg Europe



European Union
European Regional
Development Fund

Thank you!

Questions welcome



Tionól Reigiúnach Oirthir agus Lár-Tíre
Eastern and Midland Regional Assembly



PROGRESS
Interreg Europe

Owen Douglas

EMRA

odouglas@emra.ie



European Union
European Regional
Development Fund

Action Plan for the Eastern and Midland Regional Assembly (IRE)

Good practice to be transferred

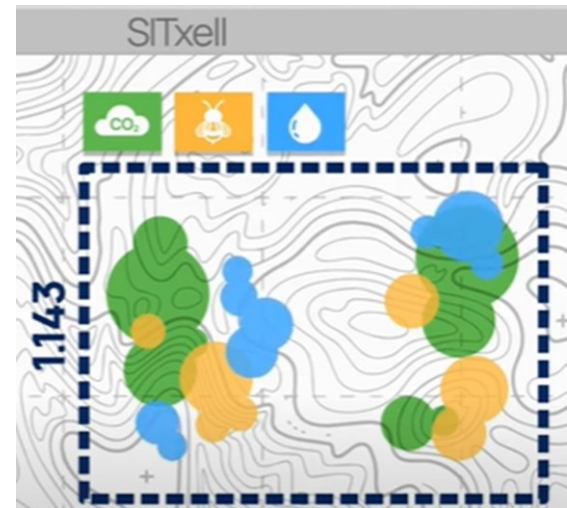
Territorial Information System for the Network of Open Areas in the province of Barcelona (SITxell)

- A cartographic and alphanumeric database organised into thematic modules used to define intrinsic and strategic ecosystem services.
- The tool has influenced the process of territorial planning in the Barcelona region, both at the municipal and regional levels, by providing accurate, reliable and up-to-date information, as well as planning criteria, to plans and projects prepared by public administrations.
- Incorporates the identification, mapping and evaluation of direct and indirect benefits that ecosystems contribute to people's well-being.



Why is it important for the EMRA Region

- No standardised Ecosystem Service (ES) or Green Infrastructure (GI) methodology or mapping approach has been advanced for local authorities in the EMRA region.
- The transfer of SITxell can assist in providing the vision for ES and GI mapping in the region.
- Specifically, it can help to support the definition of a standardised methodology and regional coordination for improved decision making for ES and GI.



Influencing the Policy Instrument

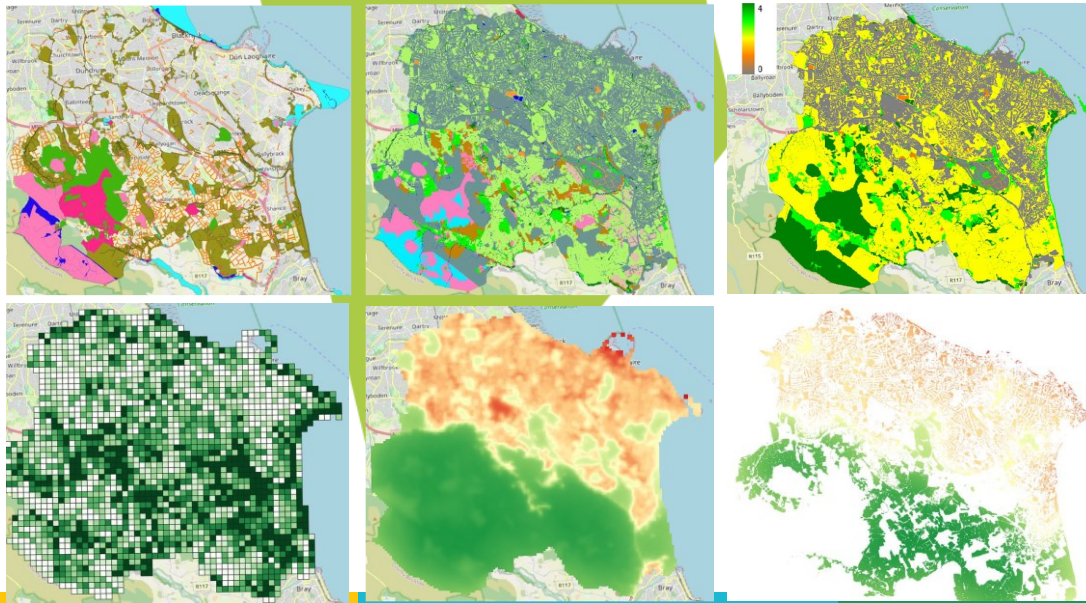
Regional Spatial and Economic Strategy for the Eastern and Midland Region 2019-2031

- Transfer of the SITxell approach can assist in the implementation of 10 Regional Policy Objectives (RPOs) contained in the RSES relating to ecosystem services, green infrastructure and riparian setbacks.
- Transfer can improve the way GI is planned, delivered and managed to maximise the provision of ecosystem services (benefits to humans) and minimise environmental degradation.



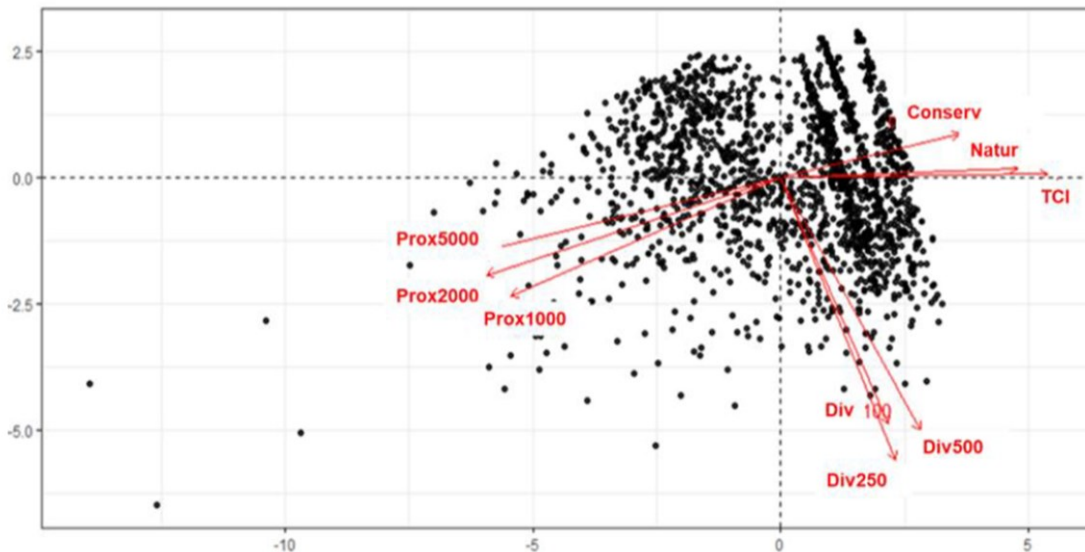
Actions performed (1)

- Implementation of the Action Plan began in September 2021 with the commencement of the project Pilot Action (Action 1) which involved testing the transfer of the SITxell methodology to the Irish context.
- A methodology was developed and criteria were established to transfer the SITxell conceptual model and methodology to an Irish Local Authority area - Dún Laoghaire-Rathdown (DLR) – EMRA, CREAM & DLR
- A range of ecosystem services for DLR were mapped on the basis of three ‘contrasting perspectives’: 1) Intrinsic value, 2) Functional value, and 3) Leisure/Cultural value.



Actions performed (2)

- The Pilot Action also tested whether these three dimensions might be combined in order to identify the areas maximizing the sum and the diversity of values.
- The Mapping Approach was evaluated by target users at 2 dedicated workshops in January 2022 and it was determined that the methodology and mapping approach was both effective and appropriate to contribute to the development of a coordinated approach for ES and GI mapping in the Dublin Metropolitan Area.



necessary
innovative

good first approach

shareable layers

learning

progressive

opportunity

useful

strategic

a good start

adaptable

Actions performed (3)

- We have identified appropriate regional structures that will ensure RSES policy for Ecosystem Services and Green Infrastructure is better implemented – **RSES Implementation Groups**
- Action Plan focuses on the Dublin Metropolitan Area, *however ongoing engagement with key stakeholders across the entire Eastern and Midland Region.*
- In line with the Action Plan, 2 meetings/workshops involving the implementation groups have been convened to discuss challenges, opportunities and funding opportunities.
- **Implementation of the Action Plan has firmly placed ES and GI mapping on the regional agenda.**



Tionól Reigiúnach Oirthir agus Lár-Tíre
Eastern and Midland Regional Assembly



PROGRESS
Interreg Europe



European Union
European Regional
Development Fund

Regional GI Coordination Meeting via Microsoft Teams
12 December 2022 // 10.00am – 12.00pm (Irish time)

Summary and Issues Emerging



Green Infrastructure Decision Support Mapping Approach for
Ecosystem Services

Technical development of a green infrastructure decision support mapping
approach for ecosystem services in Dún Laoghaire-Rathdown (DLR) using the
SITxall territorial mapping approach

Final report



Janis Corbille
Joan Pino
CREAF, May 31st 2022



PROGRESS

Interreg Europe



European Union
European Regional
Development Fund

Thank you!

Questions welcome



PROGRESS
Interreg Europe



Action Plan in Romania (Oltenia Region)

Ștefănescu Dragoș Mihail

University of Craiova

Good practice to be transferred

Forest Ecosystem Services Mapping and Assessment Methodology

In Latvia, forests are the most widespread terrestrial ecosystems, the forest cover being 53%. Apart from timber resources, forests provide a number of other ecosystem services (ES), many of which in the opinion of the society are more important than wood. The aim of the Forest Ecosystem Services Mapping and Assessment Methodology (FESMAM) is to spatially map and evaluate the various benefits provided by forests, as well as the changes in the provided ecosystem services over time and in the result of anthropogenic intervention, e.g., different forest management operations. To systematize the ES, the Common International Classification of Ecosystem Services (CICES, v.5.1, 2020) was used. For the spatial evaluation of the ES, matrix model was applied (Burkhard et al. 2009, 2012, 2014). It is a flexible approach which is able to deliver comparable results in various spatial scales, depending on the geospatial units used.

Why is it important for the Oltenia Region

Ecosystem services are increasingly integrated in land use planning. Many countries have already incorporated the process of evaluation of ecosystem services in their national assessments following the MAES (Mapping and Assessment of Ecosystems and their Services), process which requires countries to make national assessments of ecosystem services.

Mapping and evaluation of ecosystem services in Natura 2000 sites can help to identify areas of high potential for ecosystem services delivery or for demand for ecosystem services, this information being essential as well for developing comprehensive and strategic development plans.

We aim to bring an improvement of management plans of Natura 2000 areas in our region / country, by including as mandatory the identification, assessment and mapping of ecosystem services, an initiative acquired in the PROGRESS project learning process through the inter-regional exchange of good practices between the partners of different regions.

Relation to the Policy Instrument

Romanian Policy
Instrument



The Large Infrastructure Operational Programme (LIOP)



The present Action Plan is targeting on **Priority Axis 4** of this policy instrument, *Environmental protection by taking measures to preserve biodiversity, air quality monitoring and de-contamination of historically contaminated sites, SO 4.1., Increasing the degree of protection and conservation of biodiversity and restoring degraded ecosystems.*

Actions performed

The action plan is ongoing, in close connection with our stakeholders, and involves, in addition to data collection mapping and assessment of forest ecosystem services in six Natura 2000 areas in the Oltenia region, according to Latvian good practice protocol.



PROGRESS

Interreg Europe



European Union
European Regional
Development Fund

Thank you!

Questions welcome