



# LC Districts

Interreg Europe



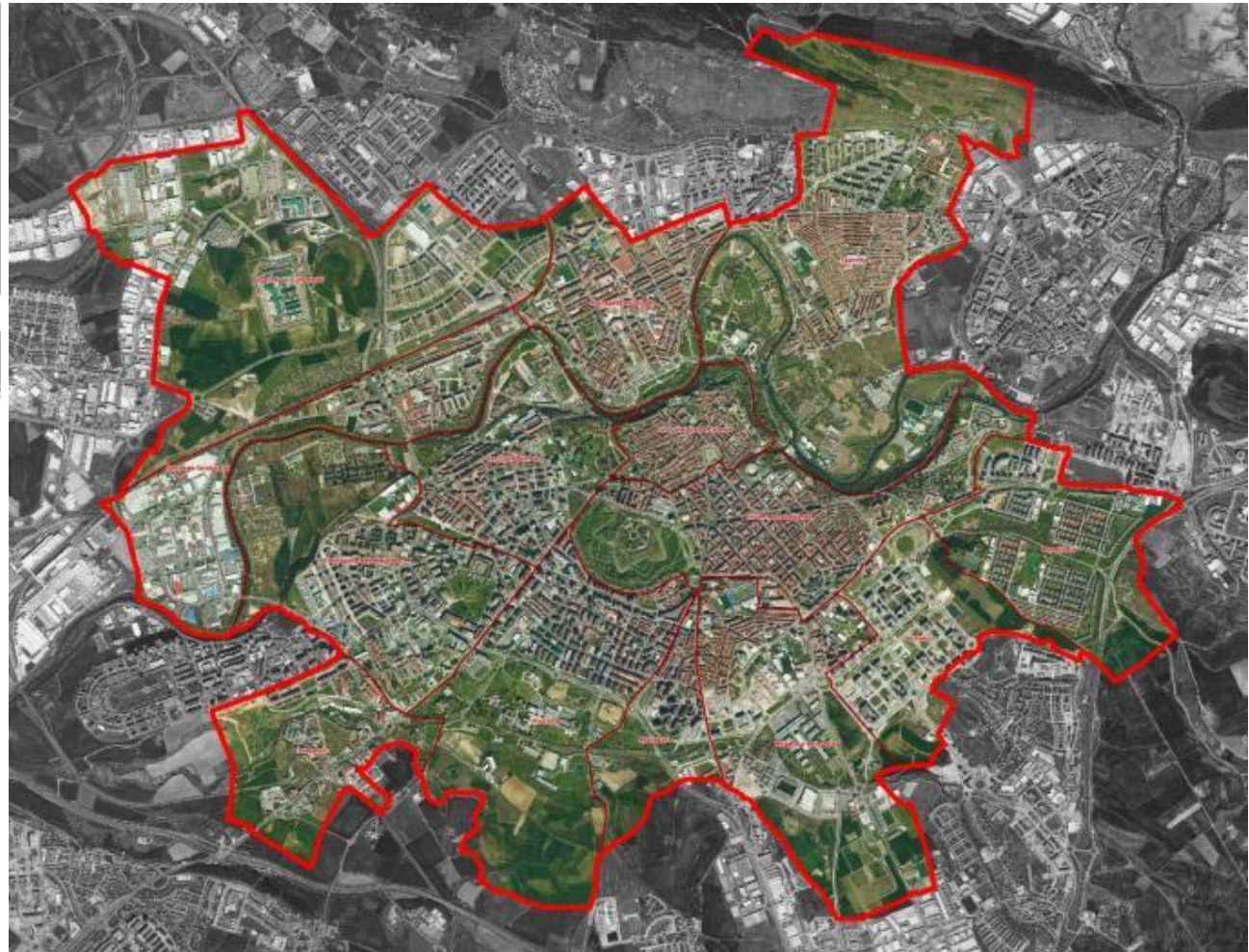
European Union  
European Regional  
Development Fund

New challenge for rebuilding: from  
Low Carbon to Positive Energy  
Districts

Jose Costero  
Pamplona City Council

**LC Districts Final Event**  
Brussels, 11th October 2022

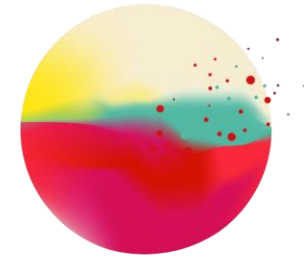
# Location and general information



# Pamplona is a green city



# Pamplona City Council



ENERGYCITIES



**EnerAgen**

Asociación de Agencias  
Españolas de Gestión de la Energía



[www.pamplona.es](http://www.pamplona.es)



# Covenant of Mayors



Covenant of Mayors  
for Climate & Energy

# Pamplona 2030 – Urban Agenda



# Energy Transition and Climate Change Strategy 2030



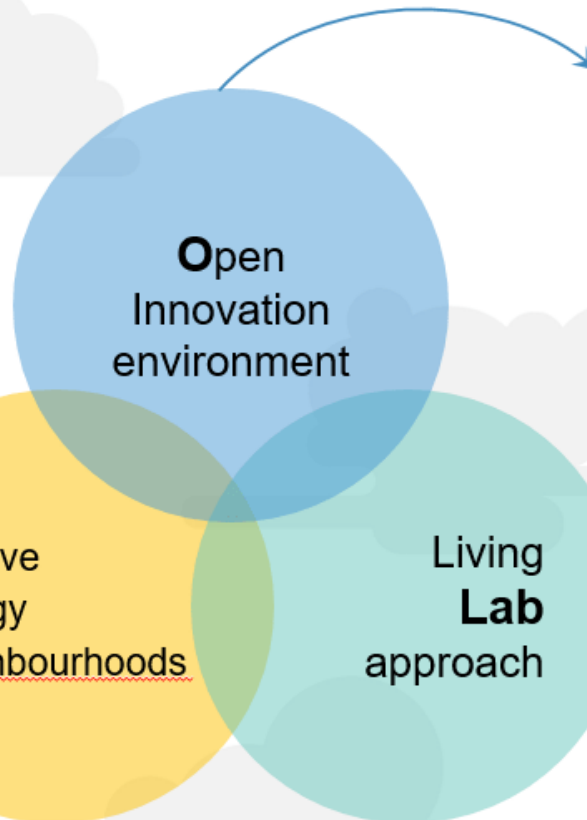
# EU funded projects





# What does oPEN Lab stand for?

- Integrated energy solutions
- Aggregated renovations on neighbourhood level
- Optimal pathways for chosen technologies



- Co-creation among companies, citizens, research organisations & governments
- Structural changes beyond what any organisation could do alone

- User oriented innovation models
- Innovation processes in real-life communities

# oPEN Lab Pamplona



- The main area of operations will be the northern district of Rochapea, a working-class neighbourhood whose origins date back to the 1940s with the establishment of industry in the lands north of the old town.
- oPEN Living Lab Pamplona will carry out **deep energy renovation of a former industrial site (IWER)**, important landmark of Rochapea, and **two apartment blocks of the San Pedro housing group**; to subsequently carry out the energy linkage between IWER and San Pedro, thereby sowing the seed of the Rochapea PEN.

# oPEN Lab Pamplona

In oPEN Living Lab Pamplona, the following activities will take place to develop a Positive Energy Neighbourhood:

- **Deploy Digital Twins** to optimise multi-energy vector operational strategies for buildings and neighbourhood energy assets.
- Deeply embed life cycle thinking from the very early stages of design to ensure that energy usage is reduced by 50%, as well as a reduction in GHG emissions of 75% by the end of the project, and towards zero by 2030.
- **Implement innovative seamless digital workflows** for design, advanced industrial manufacture, construction, or renovation that will **contribute to reducing time and cost by 40%**.

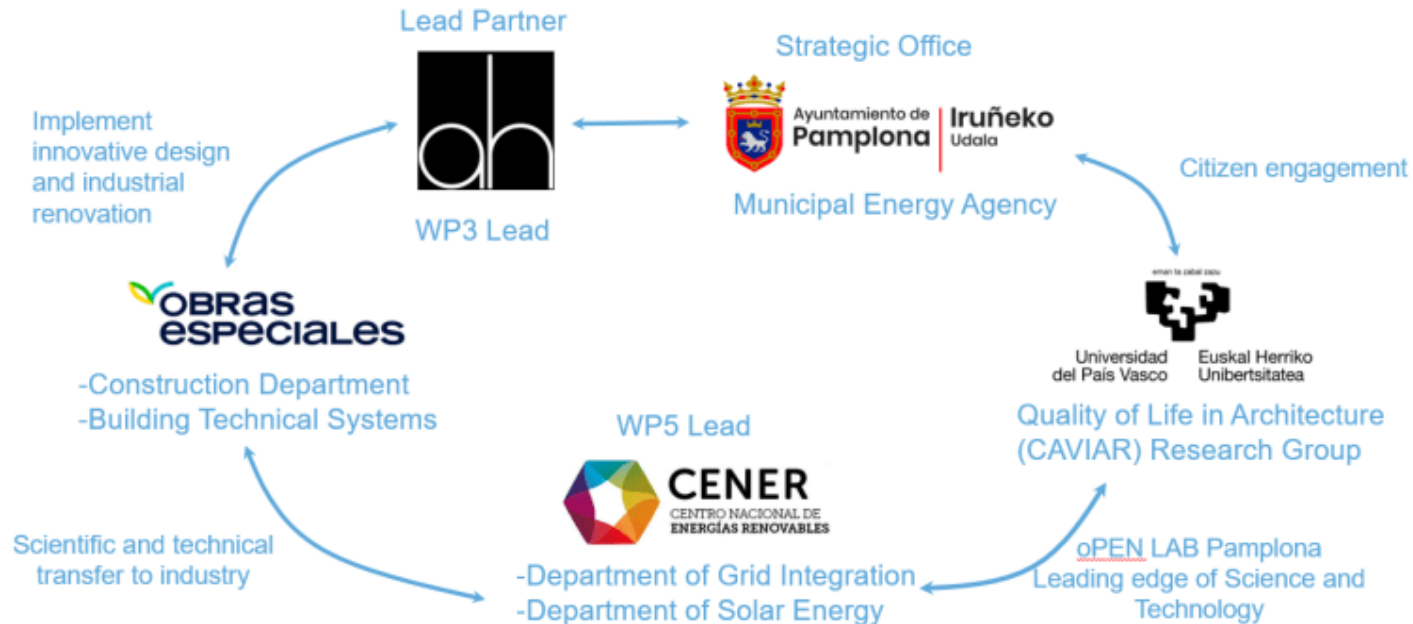


# oPEN Lab Pamplona

Local energy communities play a key role in future PEDs



# oPEN Lab Pamplona





# LC Districts

Interreg Europe



European Union  
European Regional  
Development Fund

# Thank you

Jose Costero  
j.costero@pamplona.es

[LC Districts webpage](#)



*Projects media*