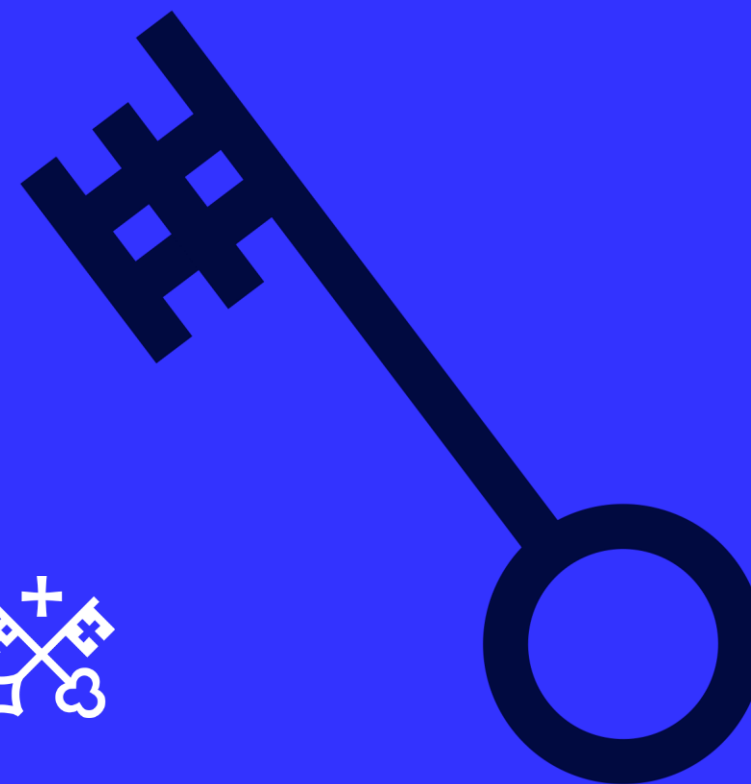
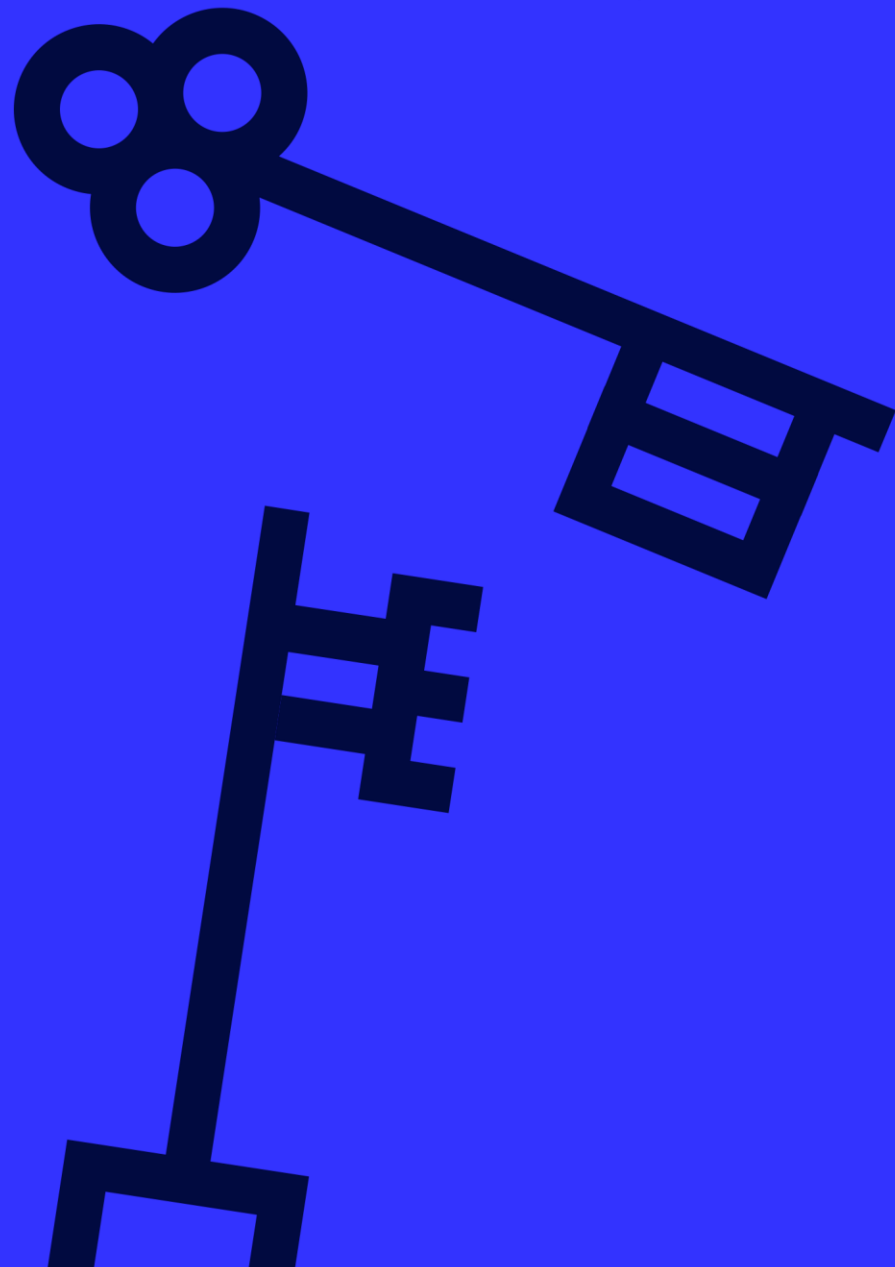


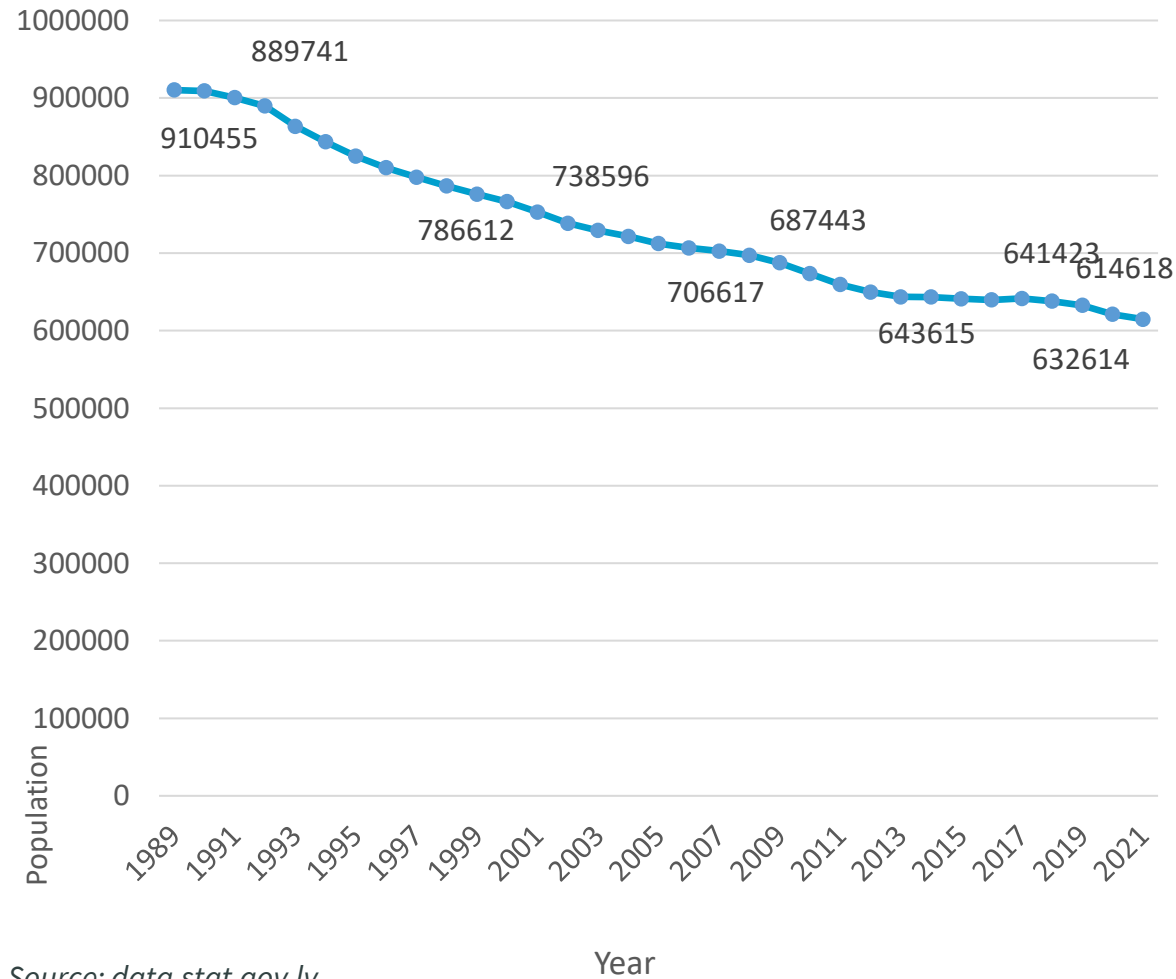
STRATEGIC PLANNING IN RIGA CITY

MAY, 2022

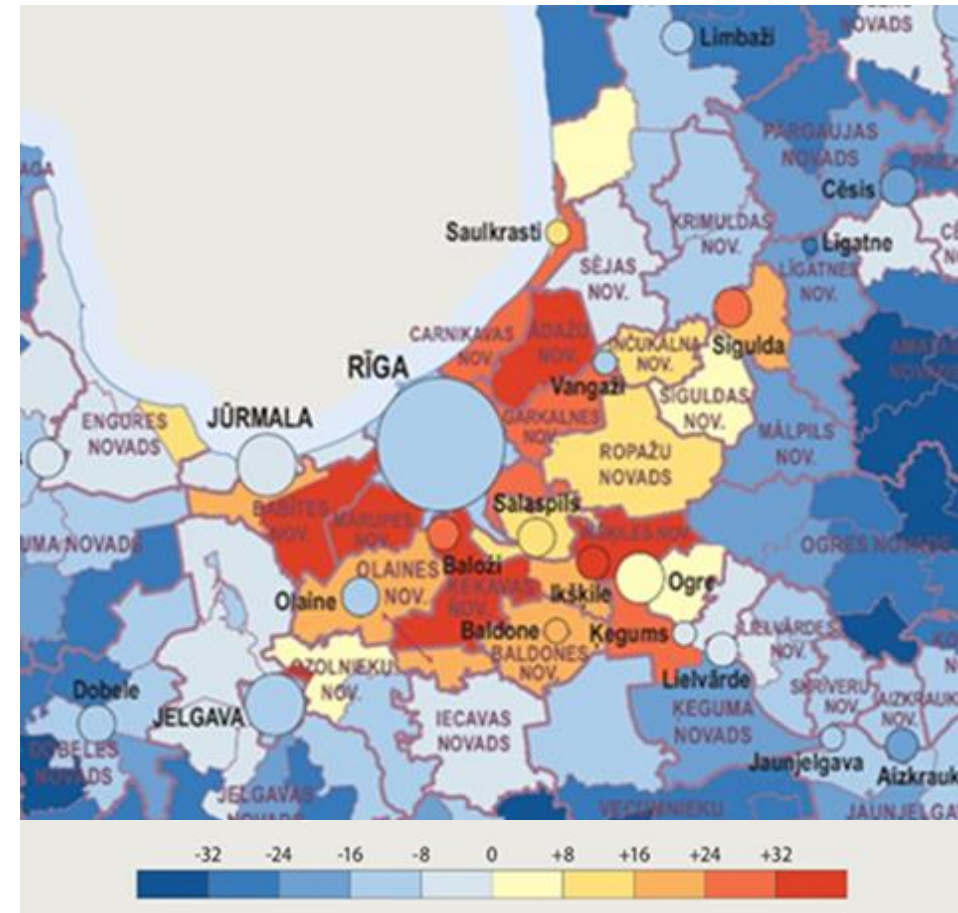


Shrinking city and growing metropolitan area

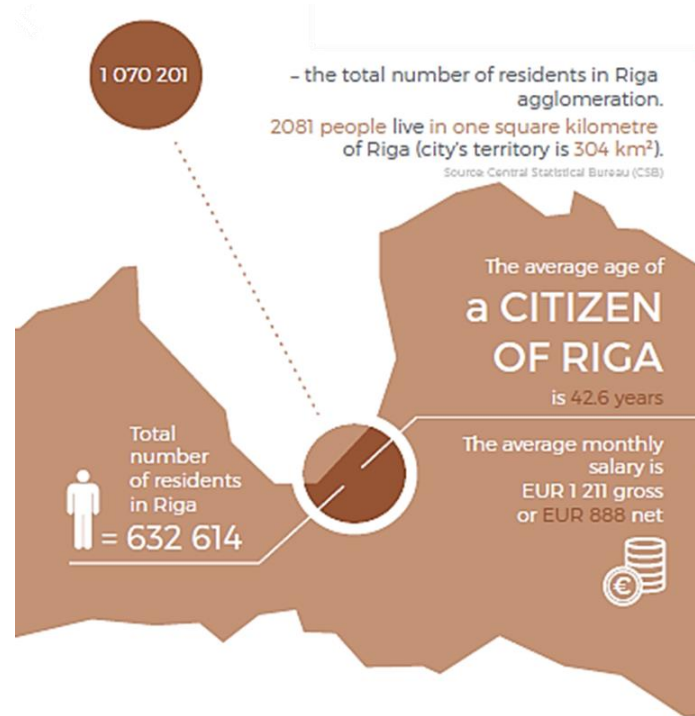
Population in Riga at the beginning of the year



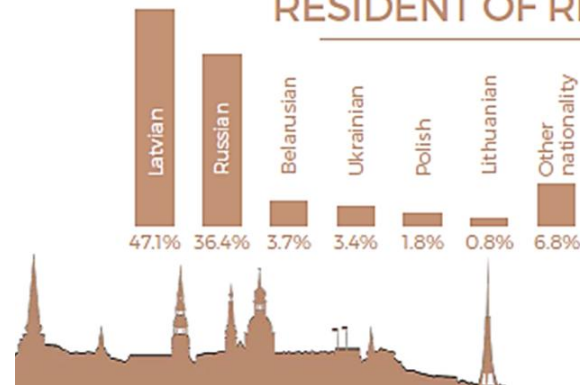
Population forecast for 2030 (% compared to 2011)



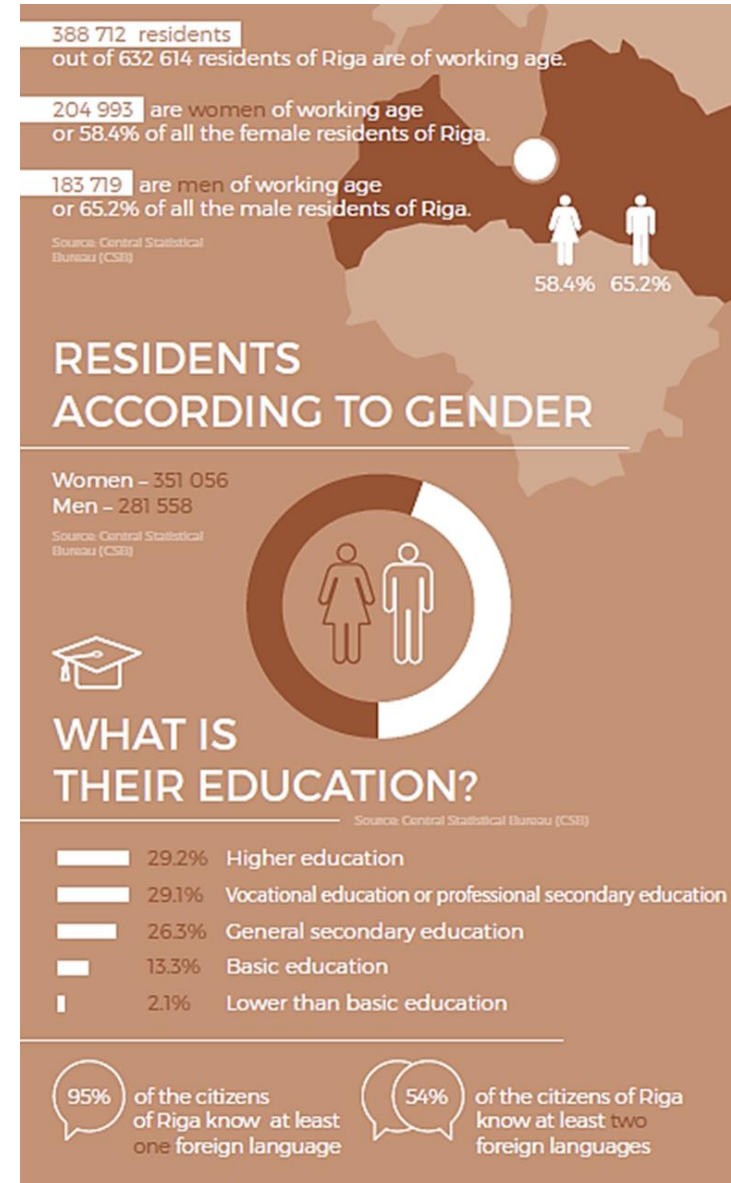
Riga city and agglomeration demography



WHO IS THE AVERAGE RESIDENT OF RIGA?



Residents of working age



Collaboration within Riga Metropolitan Area



Railway stations and mobility points

- Rail Baltica stations
- Regional mobility points

Railway lines

- Battery railway lines
- Railway lines to be upgraded
- Rail Baltica railway lines

Major roads and streets

- Existing roads and streets
- Roads and streets to be developed and rebuilt
- Roads and streets to be developed and rebuilt in perspective

- Cycling directions

- Areas important for competitiveness and economic development

Development centers

- International and national center
- National development center
- Metropolitan development center
- Circle of development centers of metropolitan significance

- Waterfronts important for recreation
- Territories managed by SIA "Rīgas meži"

- Administrative territories
- Water bodies

Map base: Latvijas OSM Riga

Political agreement



Historical centre of Riga

— UNESCO border for the historic centre of Riga – 438,3 ha (1,43% from the total city area)

— Protection belt of the historic centre of Riga – 1574,2 ha (5,13% from the total city area)

Besides beautiful urban environment and specific characteristic of the past periods sizable historical heritage means additional responsibilities and regulations as well usually extra expenses

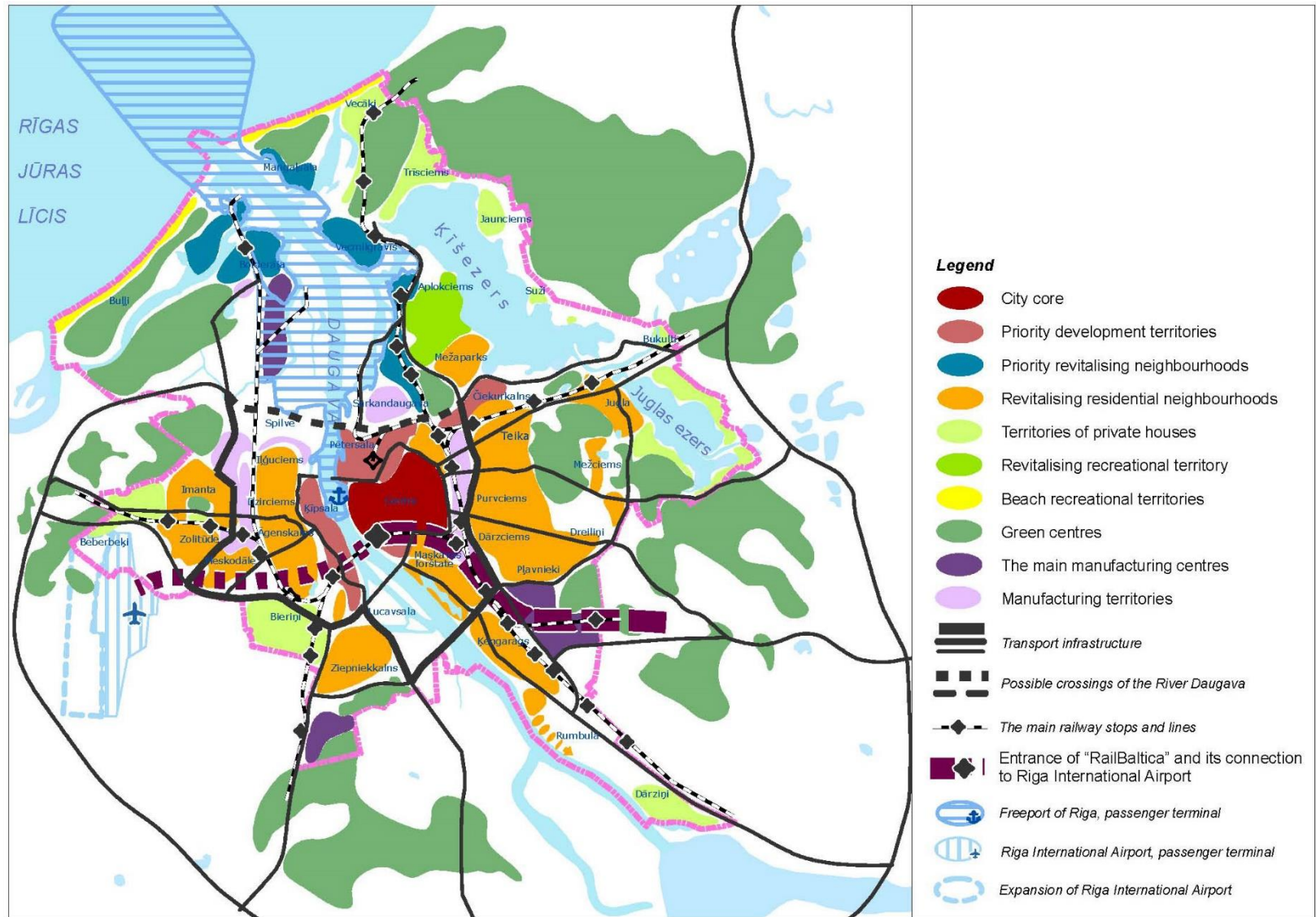


Riga Sustainable development strategy 2030

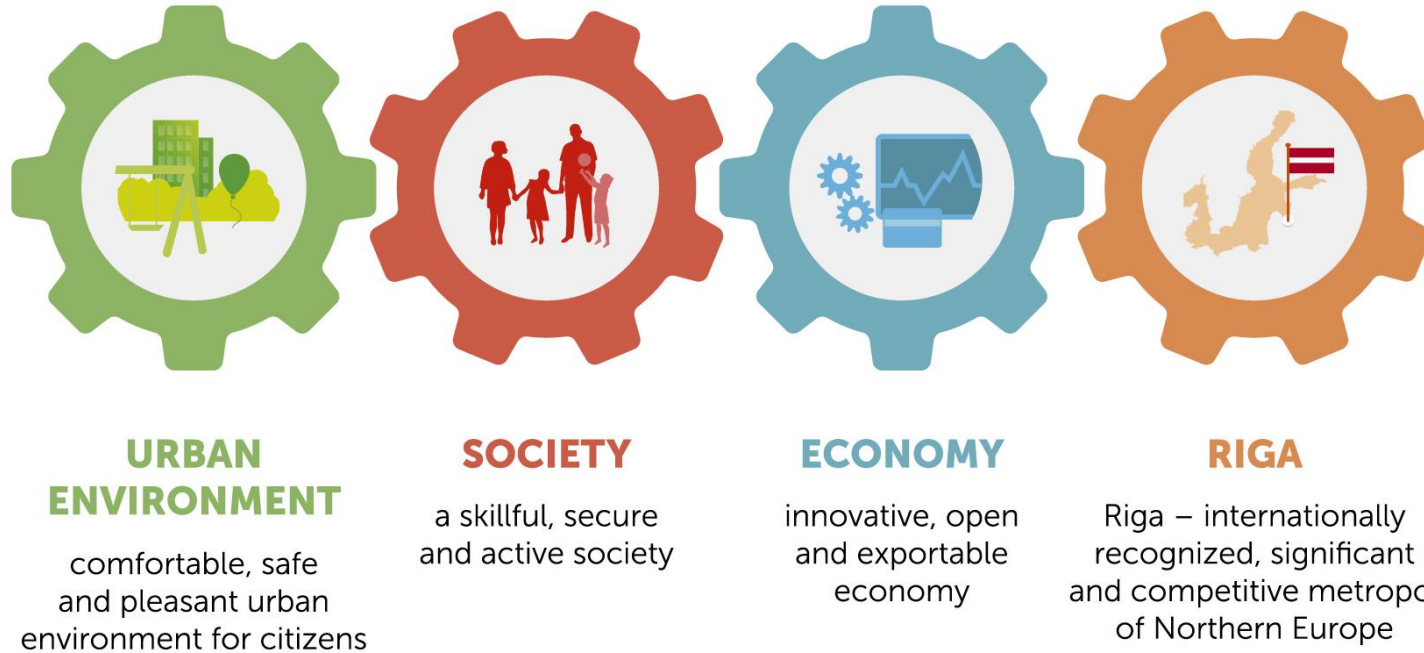


RĪGAS ILGTSPĒJĪGAS ATTĪSTĪBAS
STRATĒGIJA LĪDZ 2030. GADAM

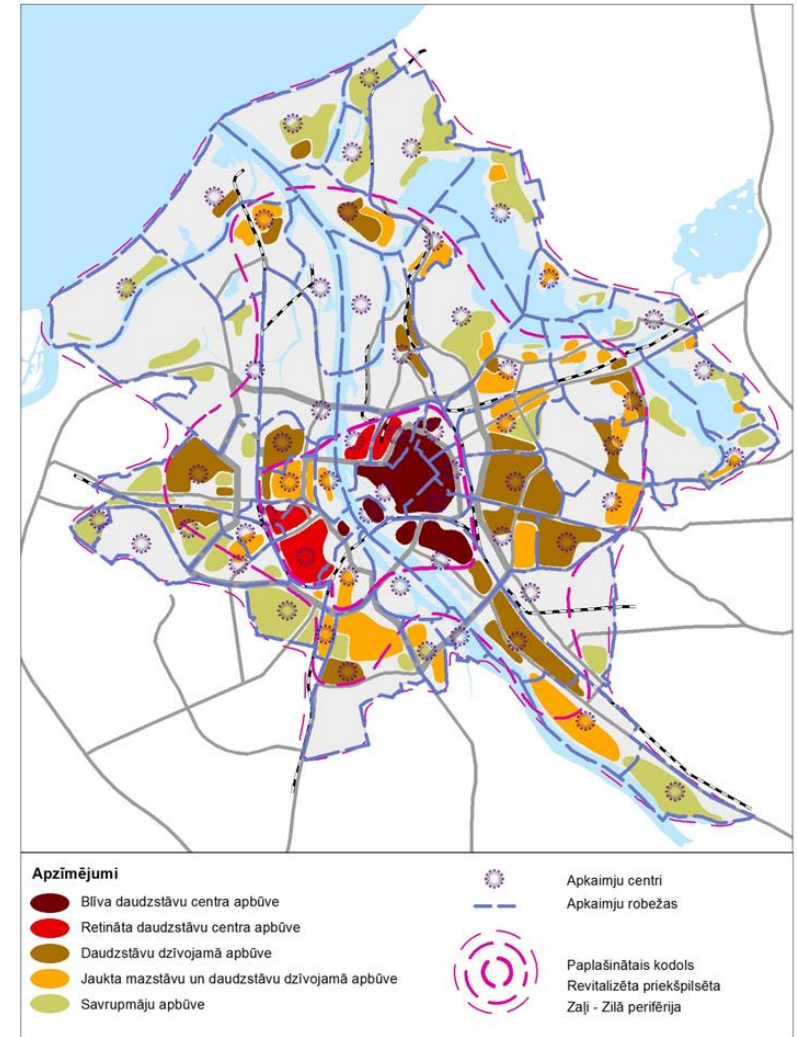
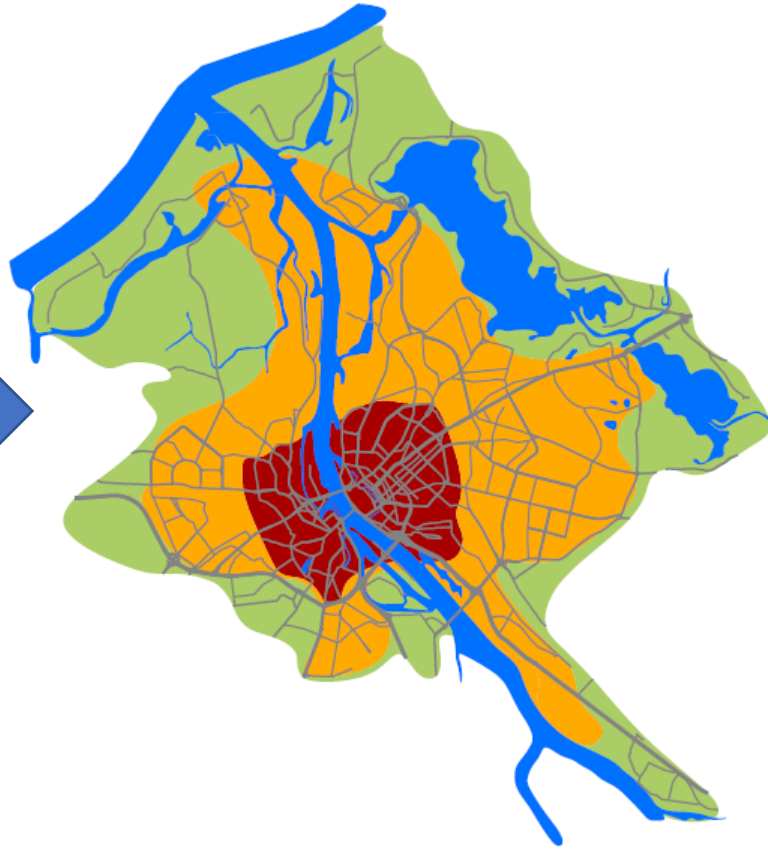
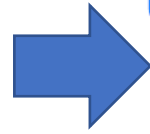
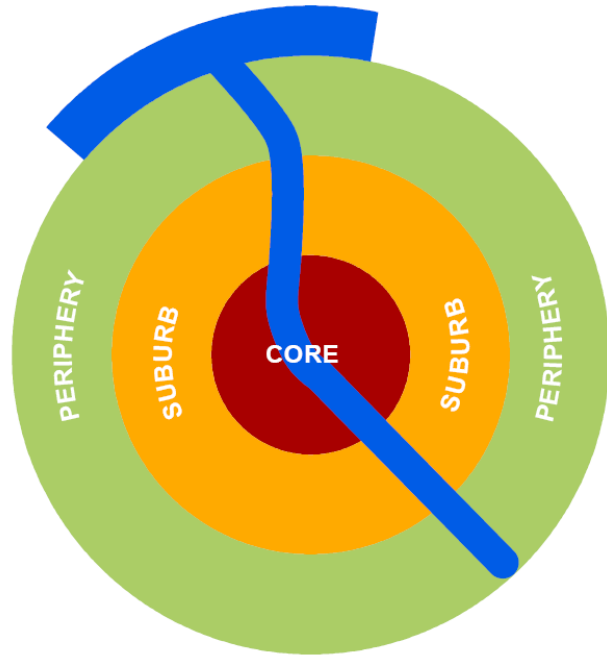
Rīga 2014



Goals set out in The Strategy

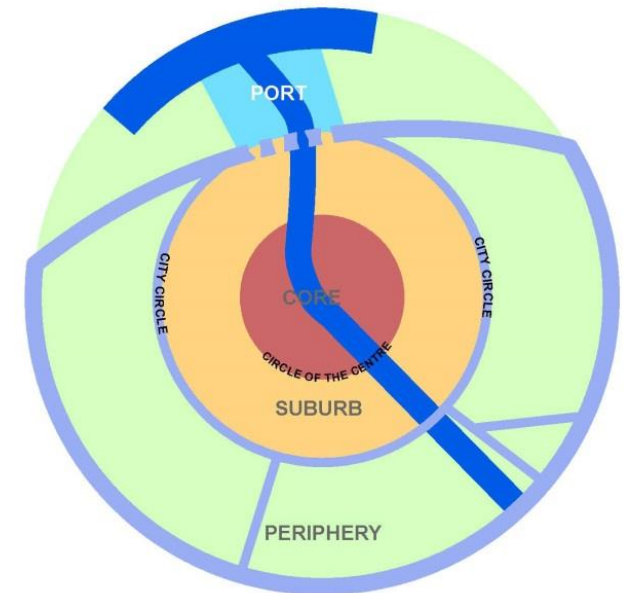
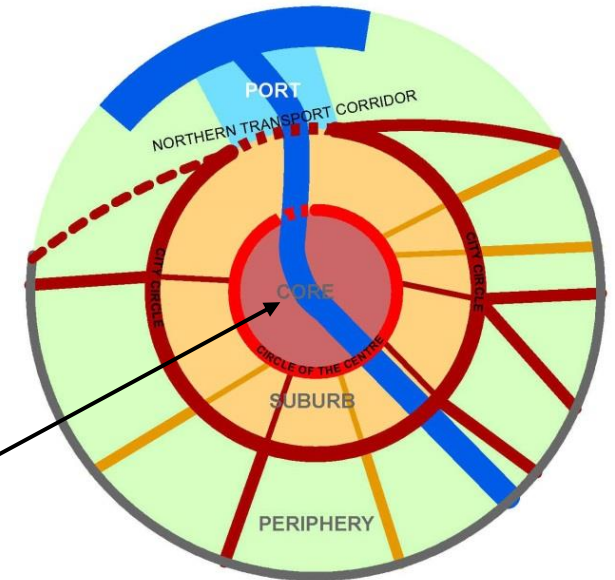
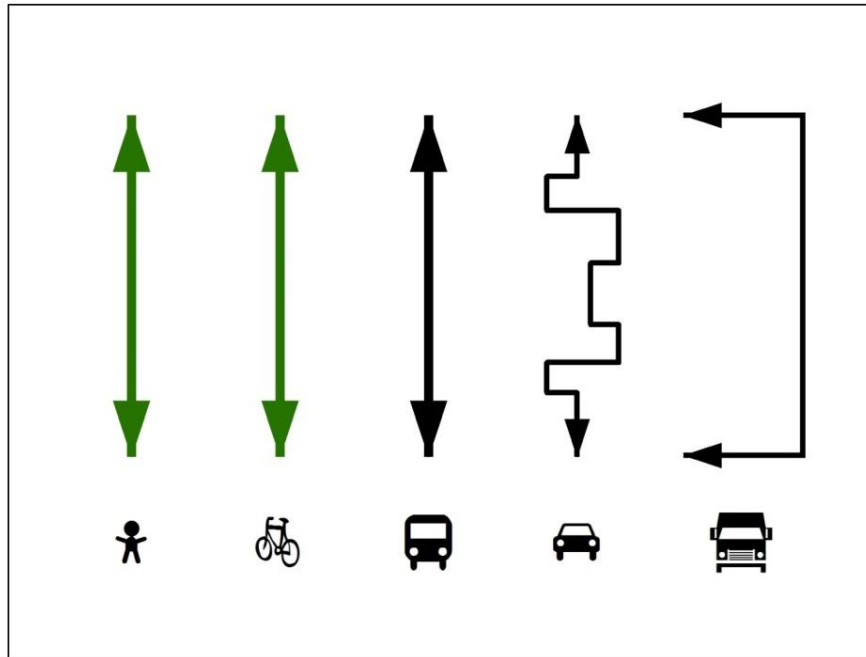


Urban structure

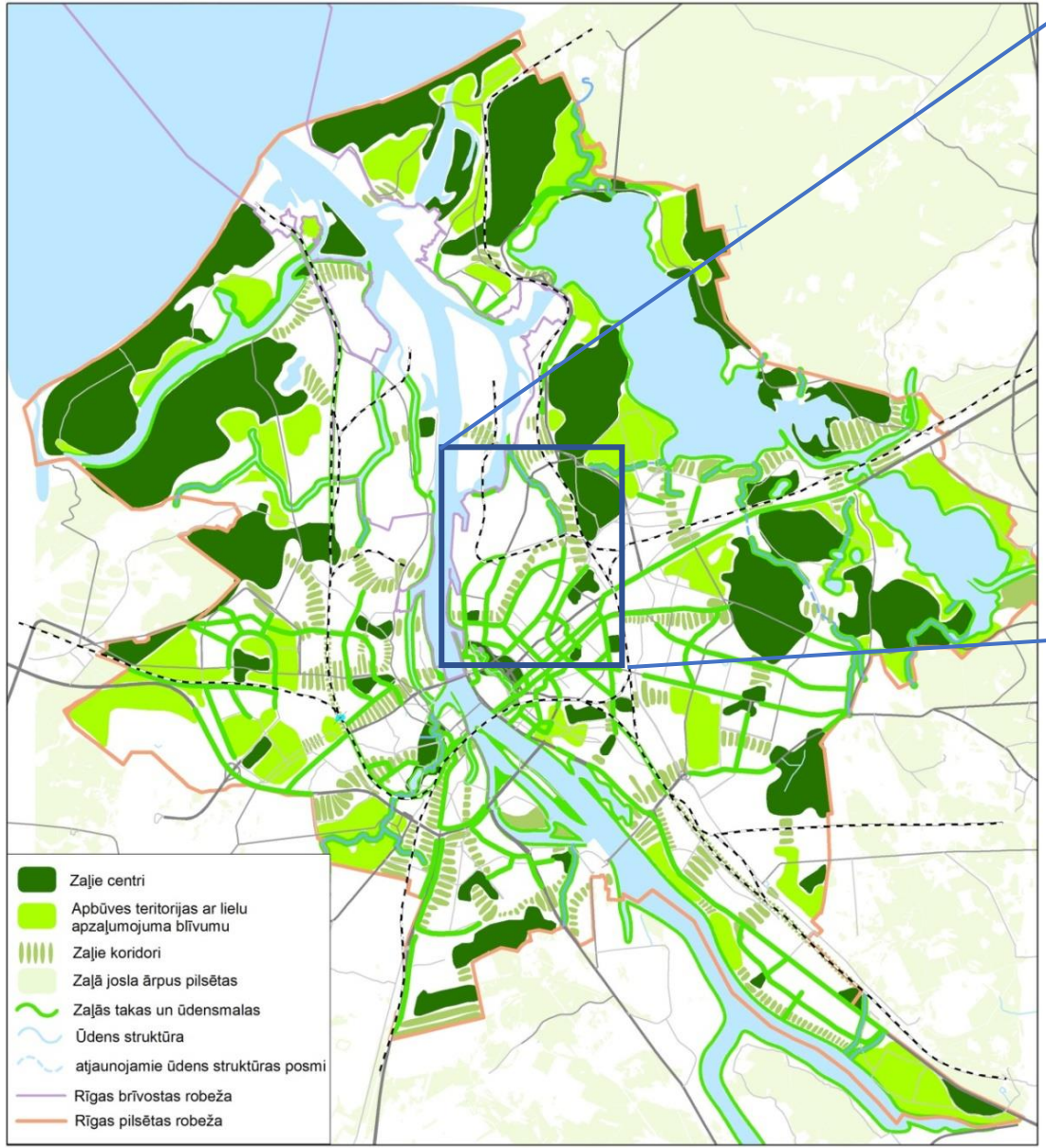
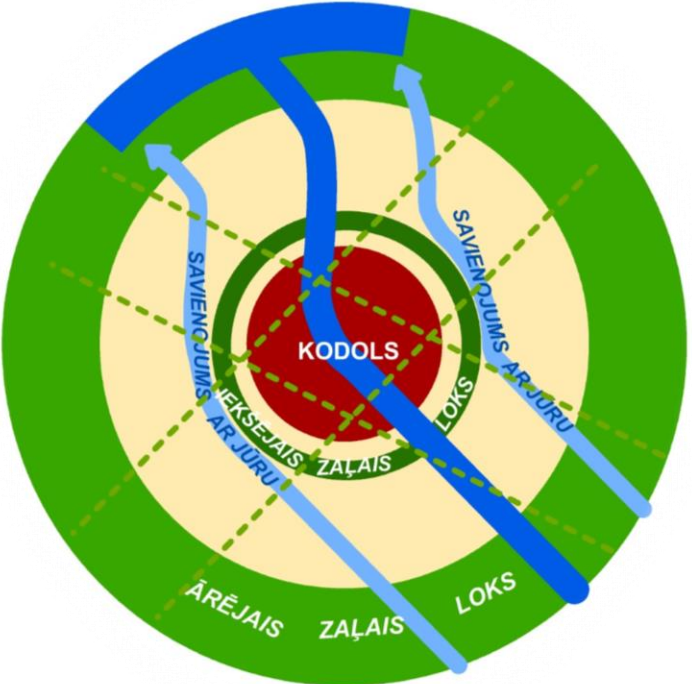


Mobility 2030

Pedestrian – cyclist – public transport
– private transport - trucks

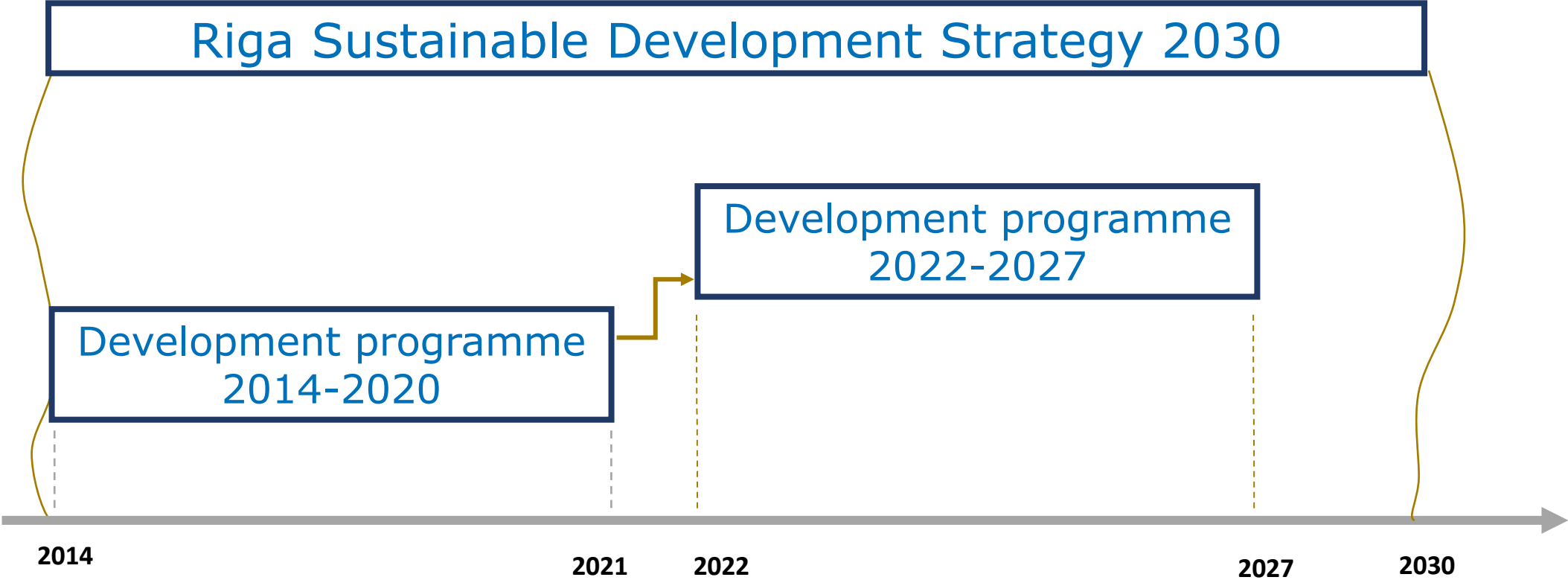


Green-Blue system



- Zaļie centri
- Apbūves teritorijas ar lielu apzaļumojuuma blīvumu
- Zaļie koridori
- Zaļā josla ārpus pilsētas
- Zaļās takas un ūdensmalas
- Ūdens struktūra
- atjaunojamie ūdens struktūras posmi
- Rīgas brīvostas robeža
- Rīgas pilsētas robeža

Development program as a tool for the implementation of the city strategy RIGA 2030

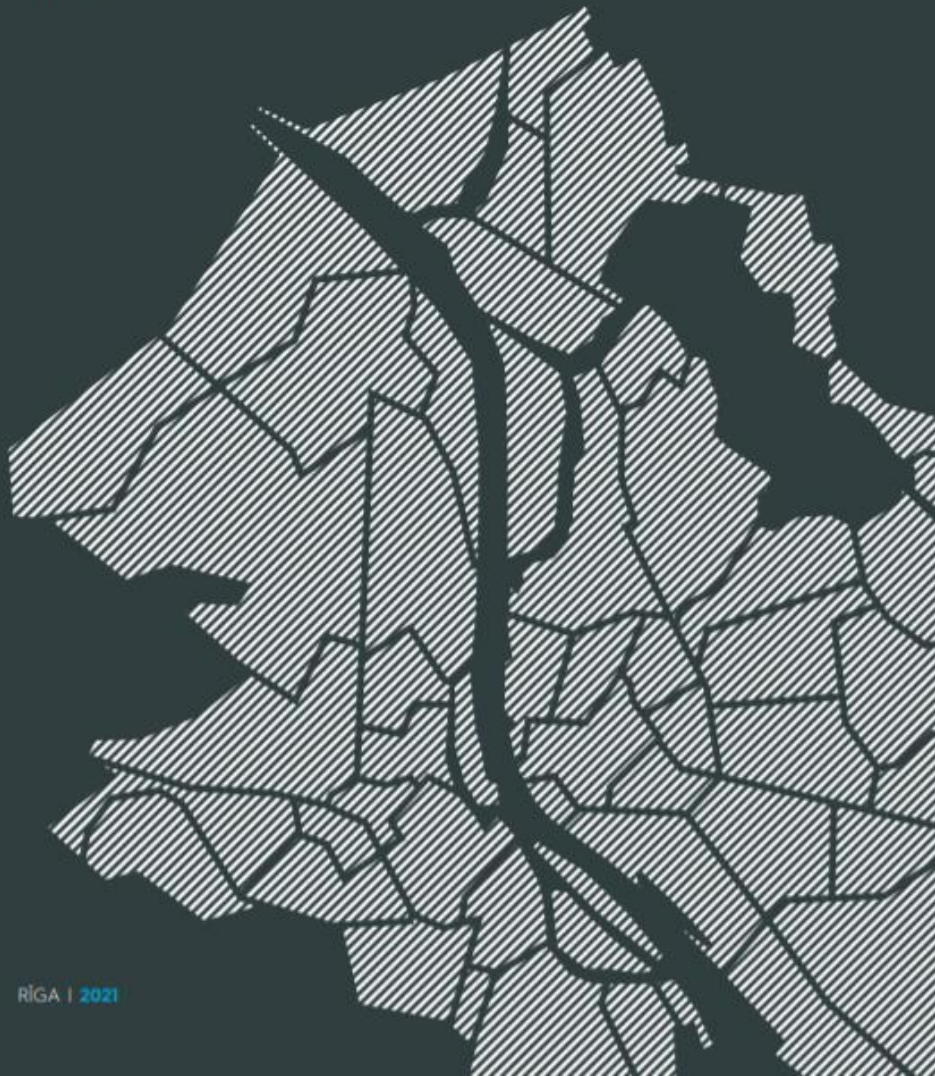


RĪGAS

ATTĪSTĪBAS PROGRAMMA
2021.–2027. GADAM

1. redakcija

APSTIPRINĀTS
ar Rīgas domes 18.08.2021.
lēmumu Nr. 795



RĪGA | 2021

RIGA

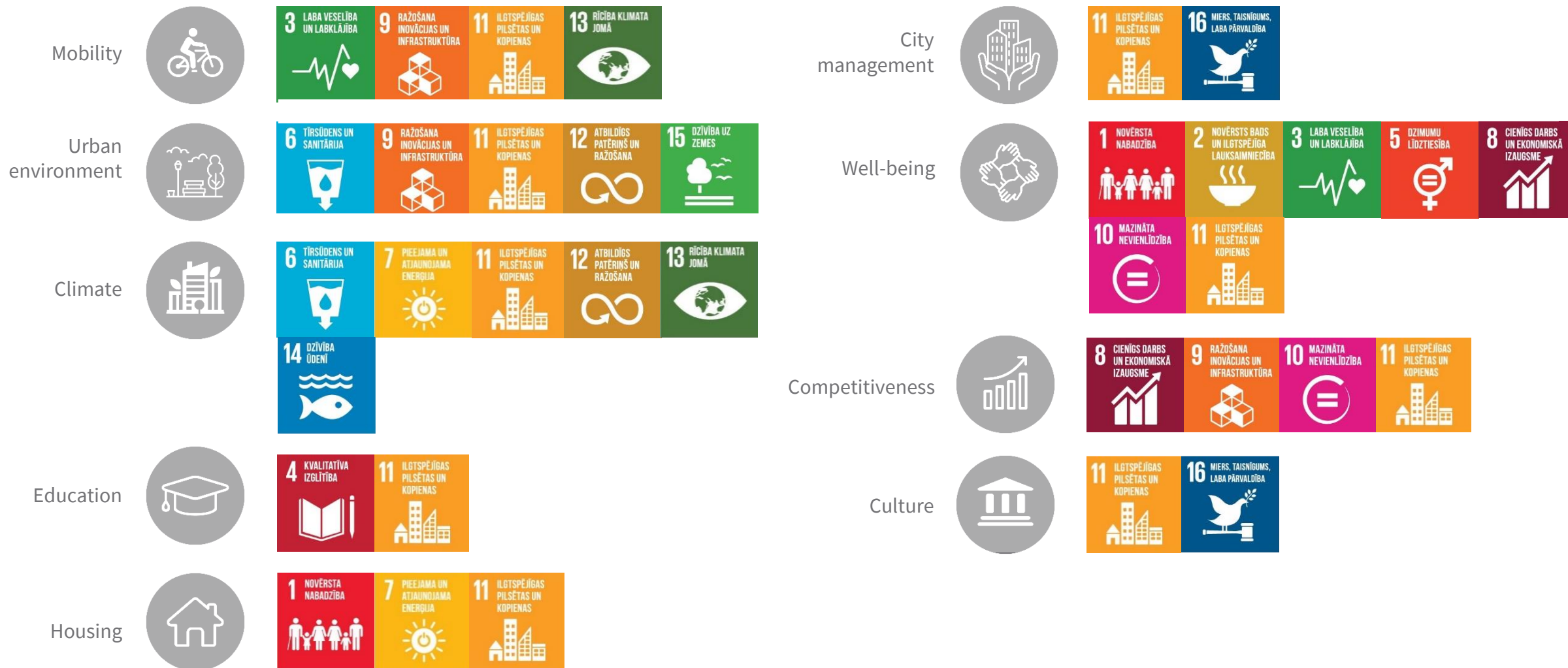
DEVELOPMENT PROGRAMME

2022-2027

DP2027 Priorities & Horizontal strands

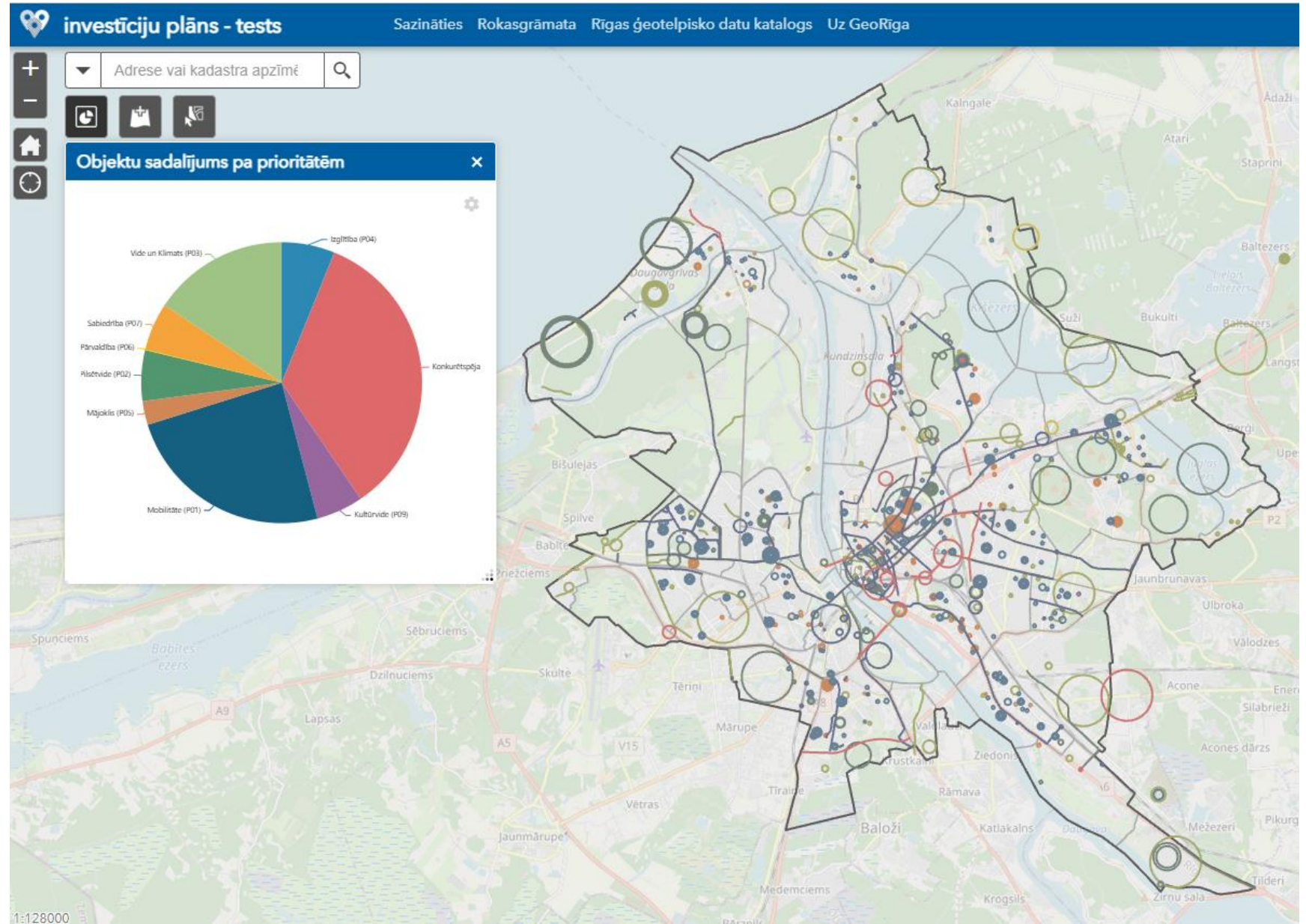


DP2027 Priorities & UN SDGs



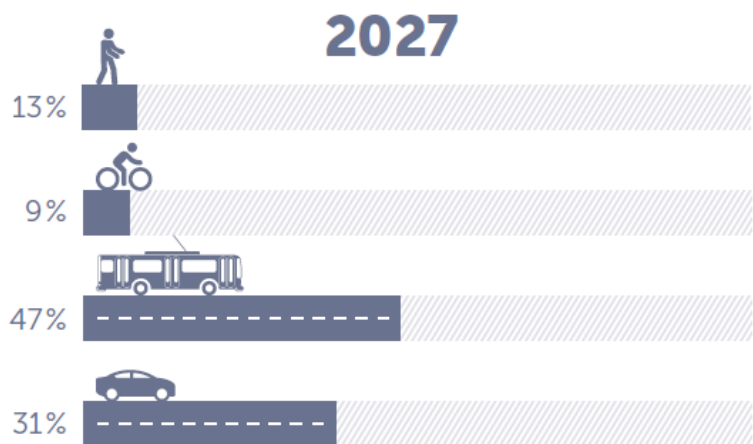
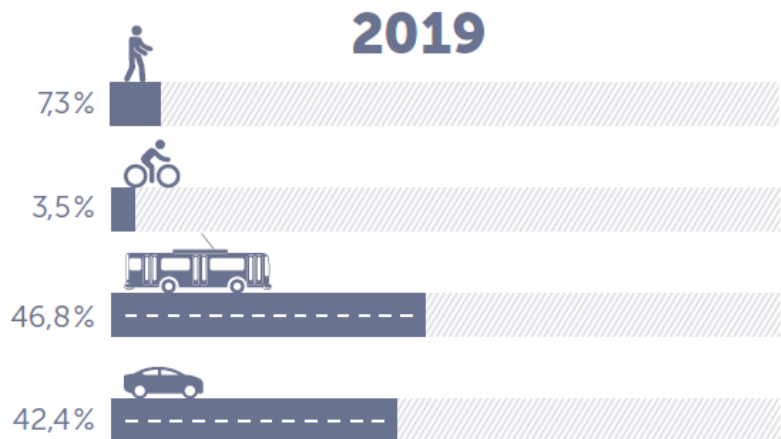
Investment plan projects

- Mobility
- Urban environment
- Climate
- Education
- Housing
- City management
- Well-being
- Competitiveness
- Culture





CONVENIENT AND ENVIRONMENTALLY FRIENDLY COMMUTING WITHIN THE CITY



Public
transport



Convenient and
safe mobility



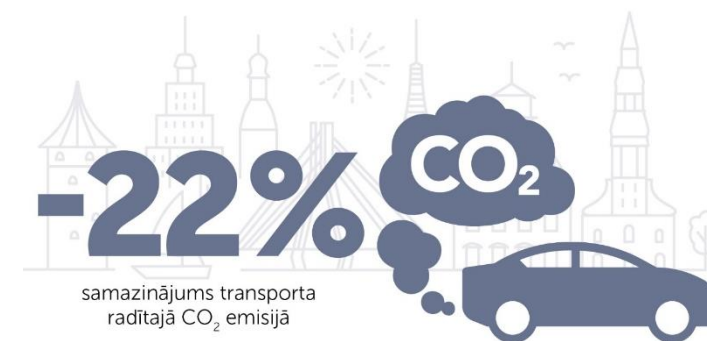
Hierarchy of
mobility



Cooperation in Riga
Metropolitan Area



Balanced
mobility

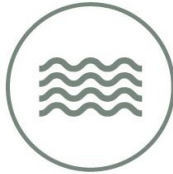




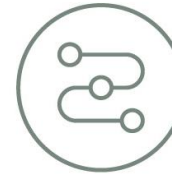
URBAN ENVIRONMENT PROMOTING QUALITY OF LIFE



**Neighbourhood
Centres**



Waterfronts



Connectivity



Green Infrastructure



**Cultural and Historical
Heritage**



**Urban Governance
Model**



**Safe Urban
Environment**



URBAN ENVIRONMENT PROMOTING QUALITY OF LIFE



Tērbatas street, 2020



New St. Ģertrūdes church square, 2021

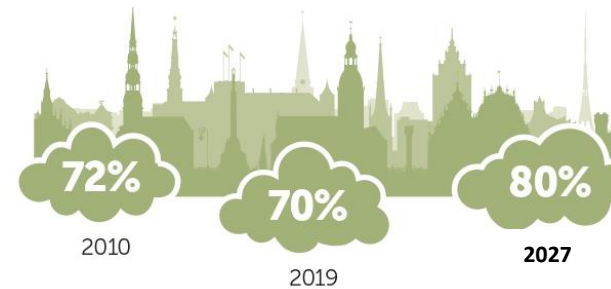


GOOD ENVIRONMENTAL QUALITY AND RESILIENT URBAN ECOSYSTEM TO MITIGATE CLIMATE CHANGE

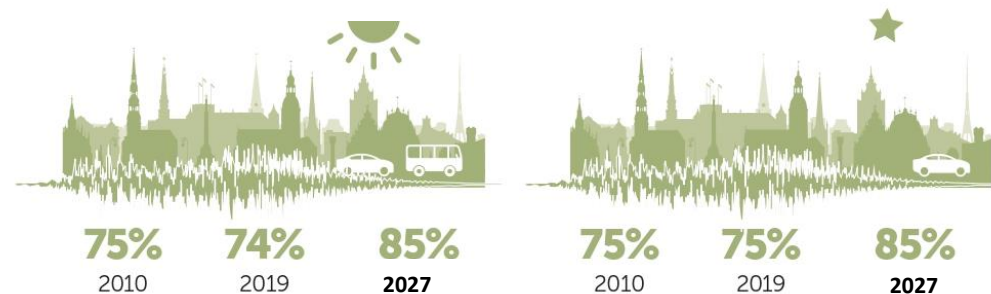
REDUCED CO₂
EMISSIONS 2020-2027



POSITIVE FEEDBACK FROM RESIDENTS ABOUT AIR QUALITY
IN THEIR NEIGHBOURHOOD



POSITIVE FEEDBACK FROM RESIDENTS ABOUT NOISE LEVELS
AT DAY AND NIGHT





GOOD ENVIRONMENTAL QUALITY AND RESILIENT URBAN ECOSYSTEM TO MITIGATE CLIMATE CHANGE



Environmental Quality Monitoring and Public Information System



Mitigating Flood Risks



Waste Management



Environmental Quality



Utilities



Climate Change Mitigation

Related activities



Top 10 projects



Low emission zone



Revitalization of
polluted water bodies



Cycling infrastructure



Healthcare infrastructure



Development of infrastructure
related to Rail Baltica



New pre-school
institutions



Housing programm



Revitalization of
markets



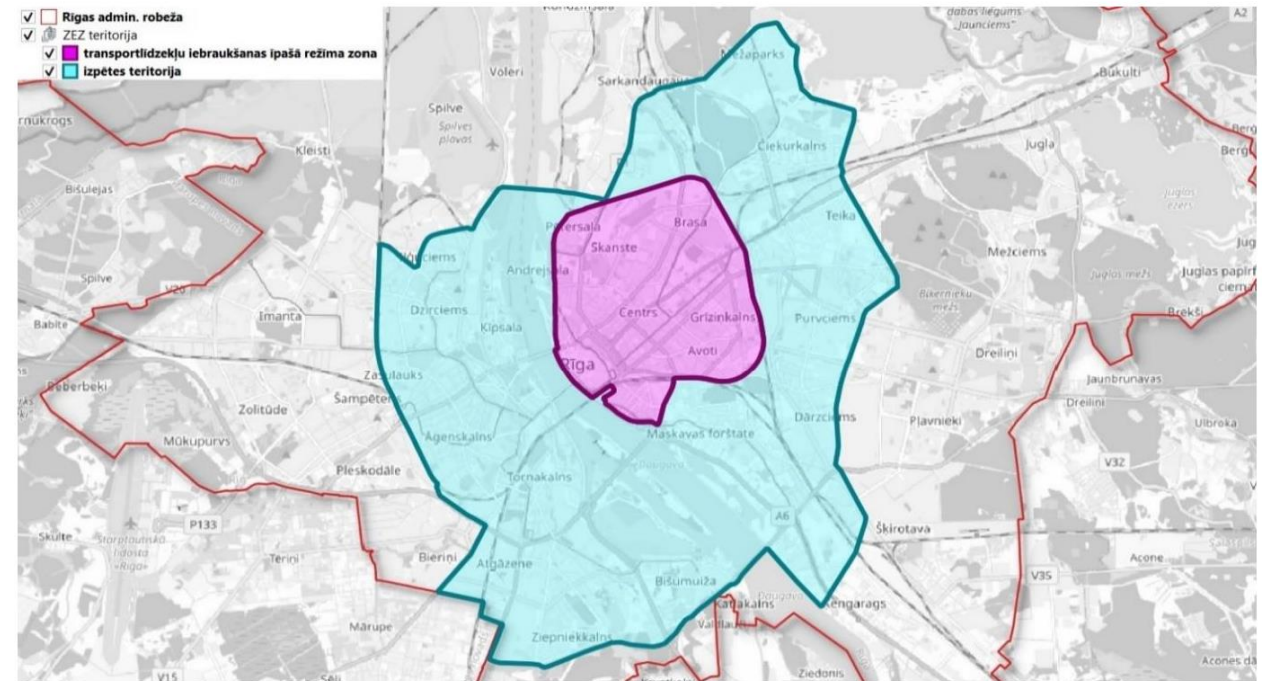
Renovation and reconstruction
of bridges



Libraries as community
centers

Low Emission Zone

- Due to exceeding air quality thresholds Riga City is about to introduce Low Emission Zone (LEZ) in central part of the city
 - 2023 – LEZ Action Plan
 - 2023–2027 Implementation of LEZ
- Promoted active modes of transport, improved urban mobility hierarchy
- Opportunity to enhance public outdoor space





Rail Baltica

Rail Baltica is a greenfield rail transport infrastructure project with a goal to integrate the Baltic States in the European rail network. The project includes five European Union countries – Poland, Lithuania, Latvia, Estonia and indirectly also Finland. It will connect Helsinki, Tallinn, Pärnu, Riga, Panevėžys, Kaunas, Vilnius, Warsaw. The Baltic part of the Rail Baltica project is referred to as the Rail Baltica Global Project.



The total length of line is 870 km



The estimated cost of the project is 5,8 billion €



Summer street experiment 2021



More than **40 trees**



Lenght 5 km



16 green islands



3 km lights



5500 plants



18 bike parking



Brīvības aleja

Baznīcas iela

Miera iela

VASARA BIŠU DRAVA

VASARA MĀKSLAS ALEJĀ

VASARA PĻAVĀ

VASARA
PRIEŽU SILĀ

VASARA ZIEDOS

VASARA DĀRZĀ

VASARA PAGALMĀ

Valņu iela

Tērbatas iela

Jaunās Ģertrūdes
baznīca

**PALDIES!
THANK YOU!**

**HAVE A NICE TIME IN
RIGA!**

