



*Ecology
moves
us*





Innovation in governance for adaptation: examples from Catalonia

Annelies Broekman

Water and Global Change Research Group CREA F

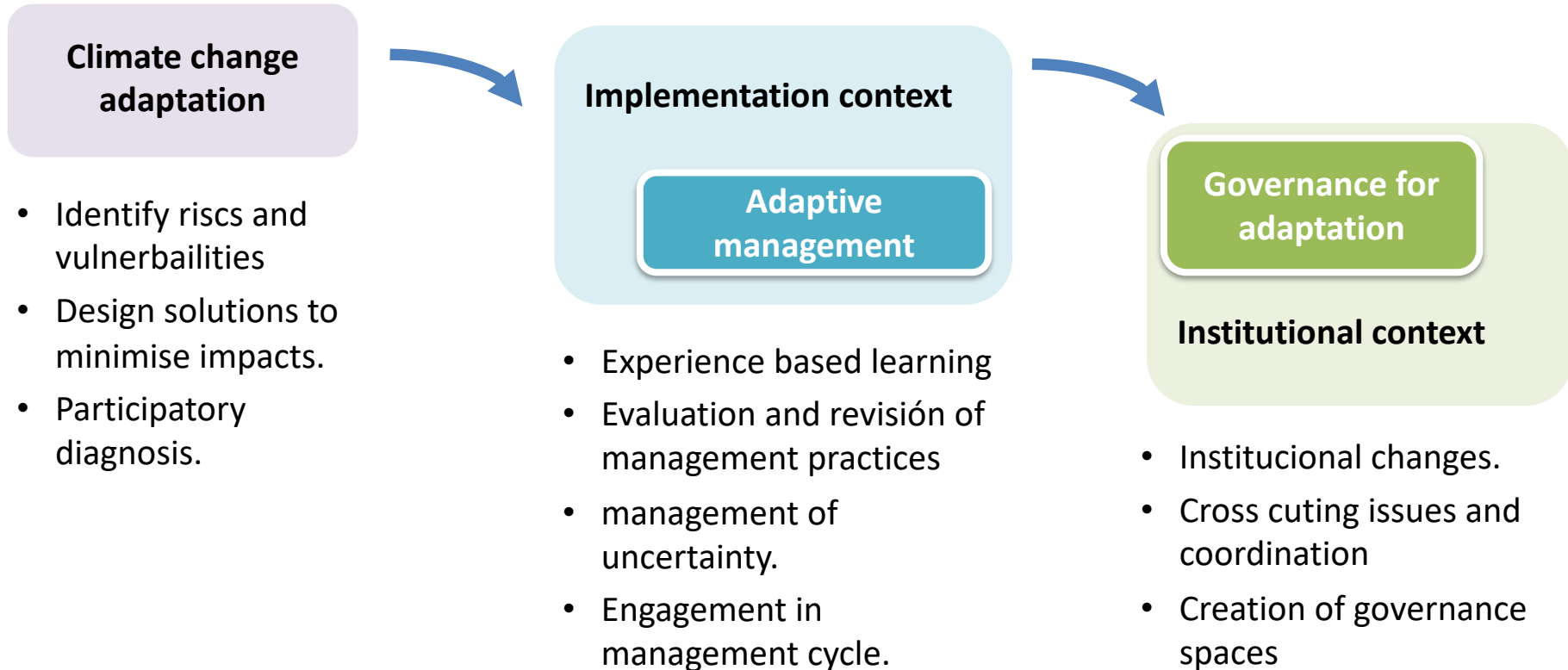
PROGRESS

**4th Interregional Training Workshop: “Landscape
governance for economic and environmental
sustainability”**

31st arch 2022, “Il Fuligno” - CSF Montedomini Firenze



Contextualisation of governance for adaptation



Contextualisation of governance for adaptation: Adaptive management



Feedback and update

Identification of challenges
and objectives

Analysis and evaluation

Formulation of solutions



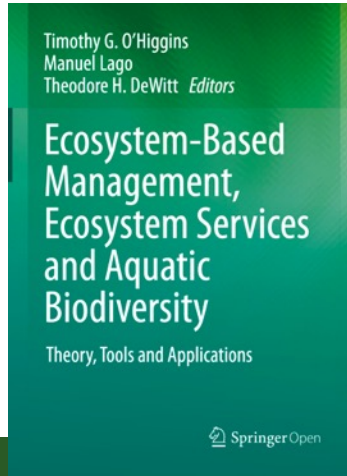
Experience based learning: continuous update and adjustment

Contextualizing governance for adaptation: Ecosystem-Based Management (EBM)



Environmental problems are “**wicked problems**”: they are persistent, have no clear ending, and involve moral choices that result in **winners and losers**.

Just as the ecological and biological elements of these problems are **dynamic and complex**, the social and political elements are also constantly changing and **do not follow linear patterns**.



Ecosystem-Based Management (EBM) is an approach developed to work on complex problems that recognizes socio-ecological systems and the need to incorporate **systems thinking** in natural resource management.

O'Higgins, 2020

Contextualizing governance for adaptation: Governance of Nature-Based Solutions



Need for a change in governance also in relation to the characteristics of the approaches and measures' characteristics:

Grey measures



- Responsibilities: clearly identified.
- Impact evaluation: expected results based on technical criteria and established protocols.

SBN



- Responsibilities: blurred, multiple actors involved.
- Impact evaluation: new engineering, more uncertainty, result based on the recovery of ecosystem functionality.

Governance model: coordinated management, participation and monitoring

Spaces of governance: La Tordera



Adaptation to global change: **participatory diagnosis and integrated management proposals** for territorial development, assuming **water as a backbone**.
Climate change as an additional stress factor on local challenges.



Making society an active participant in water adaptation to global change



Global change is expected to reduce available water resources in the Mediterranean region
How can river basins adapt?



ISACC TorDelta
Implicant la societat en l'adaptació al canvi climàtic al delta de la Tordera



Foto: Enric Sagnieba Soler



This project has received funding from the European Union's Seventh Programme for research, technological development and demonstration under grant agreement No. 612385



EUROPE for business



Un projecte de:



Col·labora:



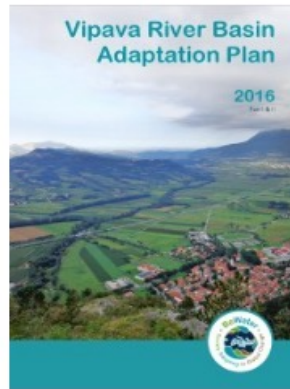
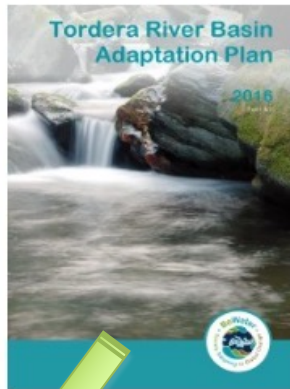
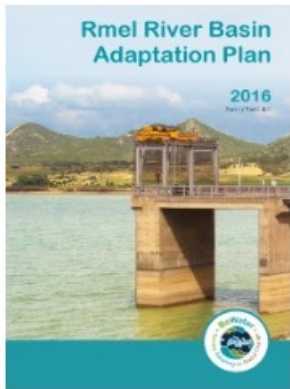
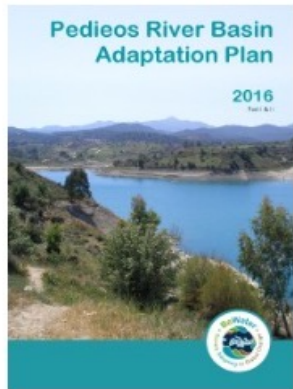
Amb el suport de:



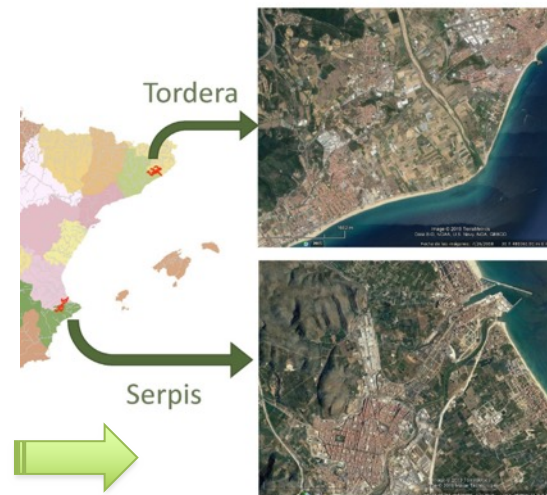
REDAPTA

Espais de governança per a l'adaptació al canvi global en rius mediterranis

Spaces of governance: La Tordera



La Tordera Delta strategy



River Serpis replication case

Governance spaces: key features



- Multi-actor platforms: multisectoral/cross cutting perspective
- Engagement of all key actors relevant for a certain goal: co-design/co-production
- Local dimension as a main focus
- Clear objectives- structured process
- Legitimation - not institutionalization-
- Communication and transparency



Plataforma Ciutadana per a la Defensa del Riu Serpis



Maresme County Council working table for climate change (METACC)

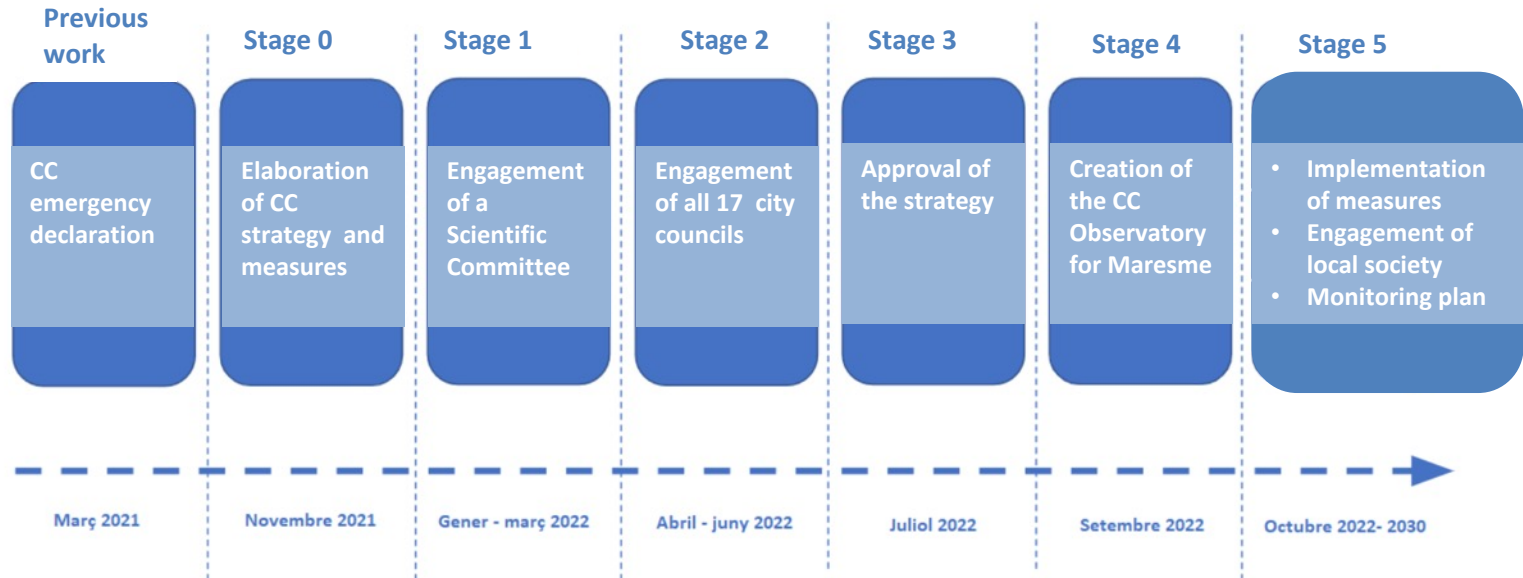


Maresme County Council working table for climate change (METACC)



**EMERGENCIA
CLIMÀTICA**

Arriba el moment d'actuar!



Maresme County Council working table for climate change (METACC)



Scientific committee:

- Transdisciplinary science streamlined into local decision making processes as a key element for framing expected impacts with research results.
- 33 voluntary researchers contributing
- 13 strategic action lines



Barriers to the adoption of the approach, basic challenges to overcome



Importance of the local dimension:

Local governments are on the direct front line of the impacts and for weighing and integrating different interests, with VERY limited means.

- **Lack of public awareness:** “People tend to underestimate the risks of natural hazards”
- **Low political priority:** “There are more urgent matters to attend to”
- **Lack of institutional cooperation:** “The integrated approach goes beyond our field of competence”
- **Lack of financing:** “No visible benefits in the short term, high costs”
- **Lack of follow-up:** “Lack of information is an excuse for inaction”
- **Lack of manpower:** “No profiles available for dealing such complexity”
- **Lack of common language:** “Experts do not understand politics and vice versa”





Thank you for your attention

CREAF

*Campus de Bellaterra (UAB). Edificio C.
08193 Cerdanyola del Vallès. BARCELONA
Tel. +34 93 581 1312*

Follow us on:

www.creaf.cat

blog.creaf.cat

