



**La Région**  
Auvergne-Rhône-Alpes

**CLUSTERIX 2.0**  
Interreg Europe



NMP-REG, ClusterFY and  
CLUSTERIX 2.0 joint workshop

Interreg Europe and Clusters  
for Recovery / focus on clusters business  
model

Tuesday, 1<sup>st</sup> March 2022



# Regional framework



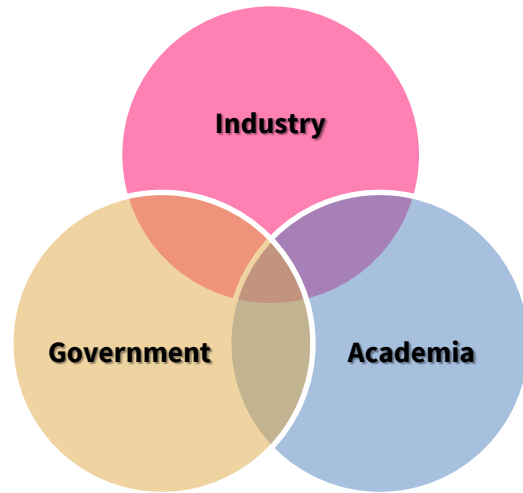
**La Région**  
Auvergne-Rhône-Alpes

▶ **12 COMPETITIVENESS CLUSTERS**

LABELLED BY THE FRENCH GOVERNMENT

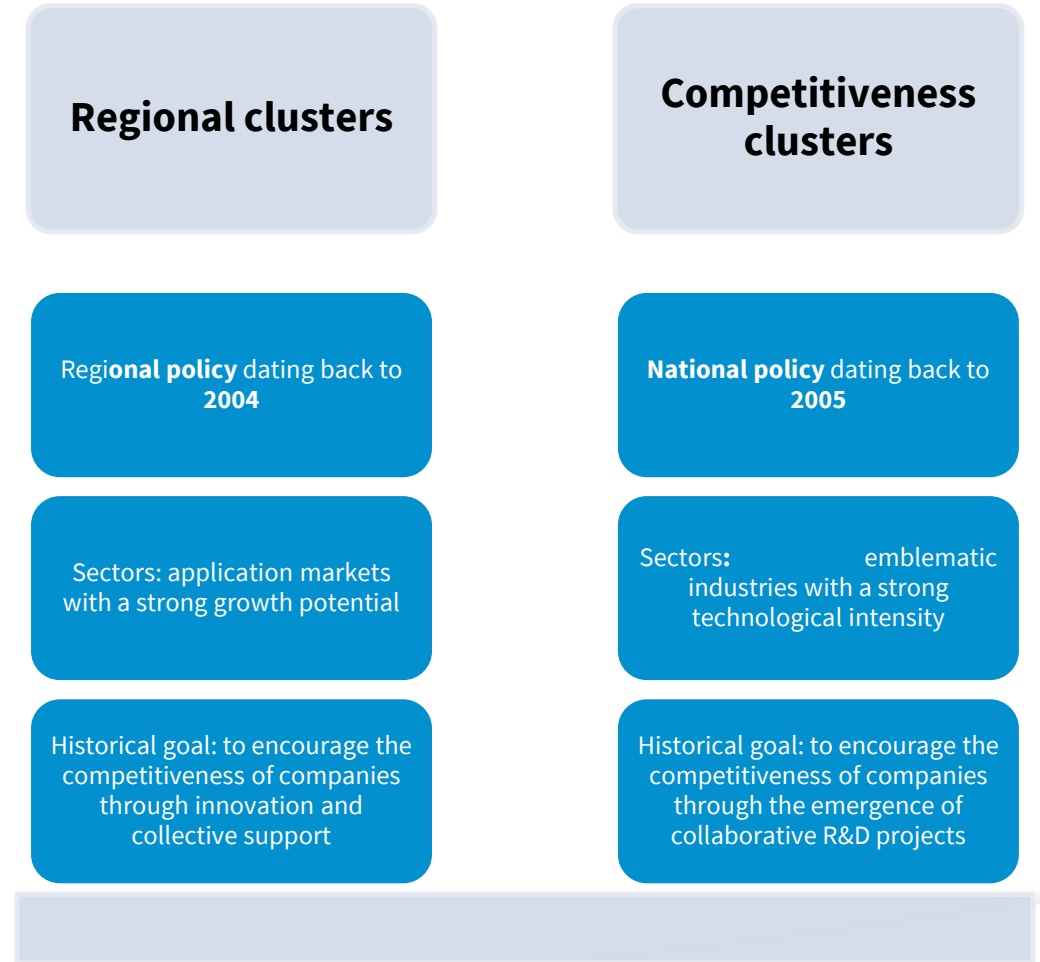
▶ **10 REGIONAL CLUSTERS**

LABELLED BY THE AUVERGNE-RHÔNE-ALPES REGION



ABOUT 5,500 MEMBERS, MAINLY SMEs,  
REPRESENTING MORE THAN 6,600 MEMBERSHIPS

**CLUSTERS AS CATALYSTS OF REGIONAL ATTRACTIVENESS AND ECONOMIC DEVELOPMENT**



**INDUSTRY OF THE FUTURE AND INDUSTRIAL PRODUCTION**



**MOBILITY AND INTELLIGENT TRANSPORT SYSTEMS**



**DIGITAL TECHNOLOGIES**



**AGRICULTURE / AGRI-FOOD / FORESTRY**



**HEALTH**



**CONSTRUCTION AND PUBLIC WORKS**



**ENERGY**



**SPORT / MOUNTAIN DEVELOPMENT / TOURISM**



# Clusters business models



**La Région**  
Auvergne-Rhône-Alpes

11

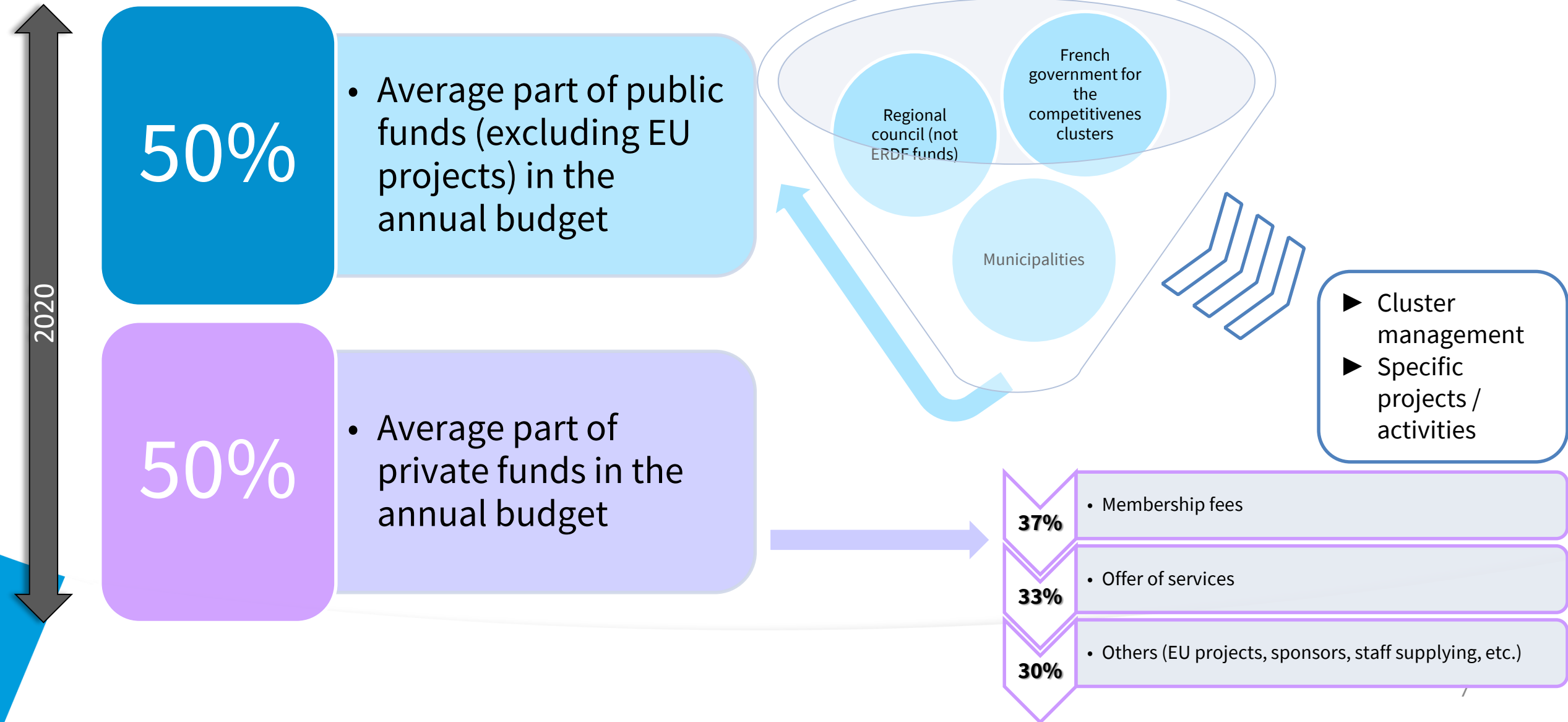
- FTE employees on average

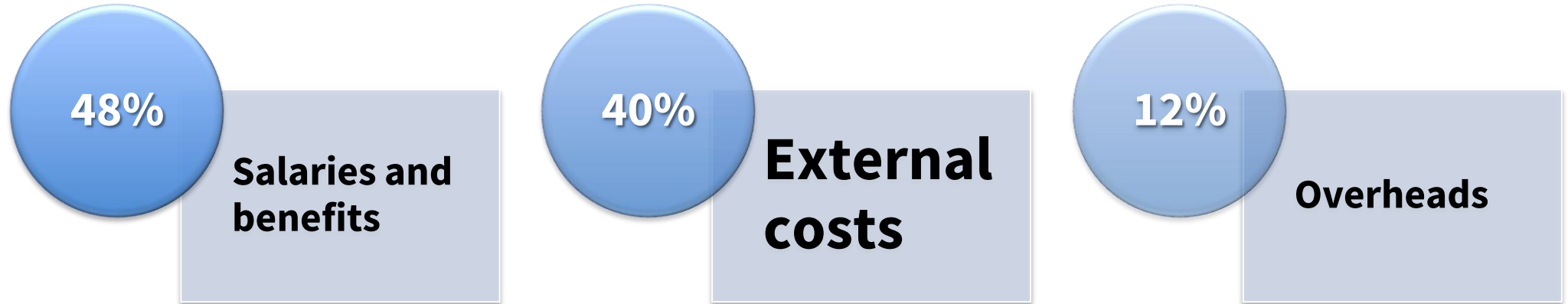
270

- Members on average

1.5 million €

- Average annual budget



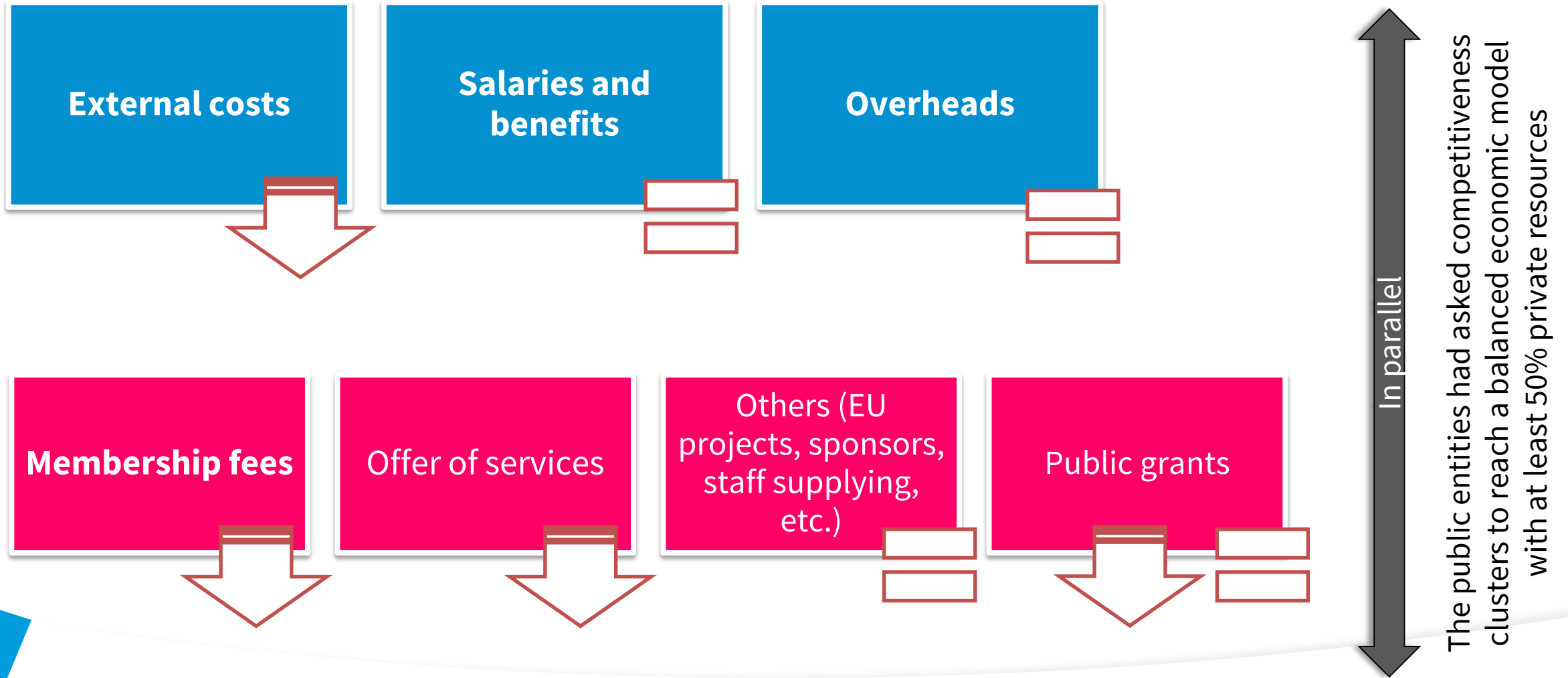




# Impacts of the COVID crisis



**La Région**  
Auvergne-Rhône-Alpes



- 1) To decrease all the expenditure items?
- 2) To ask for lower public grants?
- 3) To increase the amount of the membership fees/to look for new members?
- 4) To diversify the sources of private resources being careful to competition with other entities (e.g. creation of an investment fund)?
- 5) To introduce new lucrative services besides the membership fees?
- 6) To introduce some success fees?
- 7) To improve the participation to European projects?

*Workshop with the  
competitiveness clusters organised  
by the Auvergne-Rhône-Alpes  
Region on the 29<sup>th</sup> June 2021*

Not a unique response

It is not easy to find the  
right balance between  
public and private  
resources

The COVID crisis was a  
source of resilience and  
creativity

# Thank you for your attention!

Economic Development Department  
Service in charge of the support to clusters and regional excellence  
sectors



# La Région

## Auvergne-Rhône-Alpes

**Elisabetta SCHENA**

Industry of the future and clusters' internationalisation  
Project Manager

✉ [elisabetta.schena@auvergnerhonealpes.fr](mailto:elisabetta.schena@auvergnerhonealpes.fr)

☎ +33 4 26 73 68 62

**Conseil régional Auvergne-Rhône-Alpes /  
Lyon**

1 esplanade François Mitterrand  
CS 20033 — 69269 Cedex 2

**Tél.** 04 26 73 40 00 **Fax.** 04 26 73 42 18

**Conseil régional Auvergne-Rhône-Alpes /  
Clermont-Ferrand**

59 Boulevard Léon Jouhaux - CS 90706  
63050 Clermont-Ferrand Cedex 2

**Tél.** 04 73 31 85 85

[auvergnerhonealpes.fr](http://auvergnerhonealpes.fr)

