

A stylized, colorful illustration of a city street scene. In the foreground, a red and orange tram is stopped at a station platform. Two women are standing on the platform, and a person is visible inside the tram. A cyclist is riding past the tram. In the background, there are modern buildings, a pedestrian bridge, and a red bus. The overall style is flat and graphic with a warm color palette.

MOVE

COVID-19

**NEW CHALLENGES AND
SOLUTIONS**

GLOBAL LEADER IN PUBLIC TRANSPORTATION

SOUTH AMERICA

We have know-how adapted to the specificities of this region of the world. We are developing in Latin America: in Colombia, Chile, and with an expansion on the Brazilian metro market since 2021.

NORTH AMERICA

Widely established in Canada and the United States, we provide all types of mobility, from shuttles to autonomous vehicles and transportation for people with reduced mobility.

EUROPE

We are present across Europe and we are the area's leading operator of zero-emission vehicles.

Our presence:

France
Germany
Portugal
Sweden
Netherlands
United Kingdom
Spain
Czech Republic
Ireland

AFRICA

Developing tramway systems in Morocco, we are a major player in the renewal of the country's cities.

ASIA

We acquired "light rail" expertise by operating the historic Hong Kong tramway, the only double-deck tramway system in the world, until 2020.

OCEANIA

We have a strong presence in Australia with 5 modes of transport (tramway, ferry, coach, bus and transport on demand) and we also manage bus and rail networks in New Zealand.

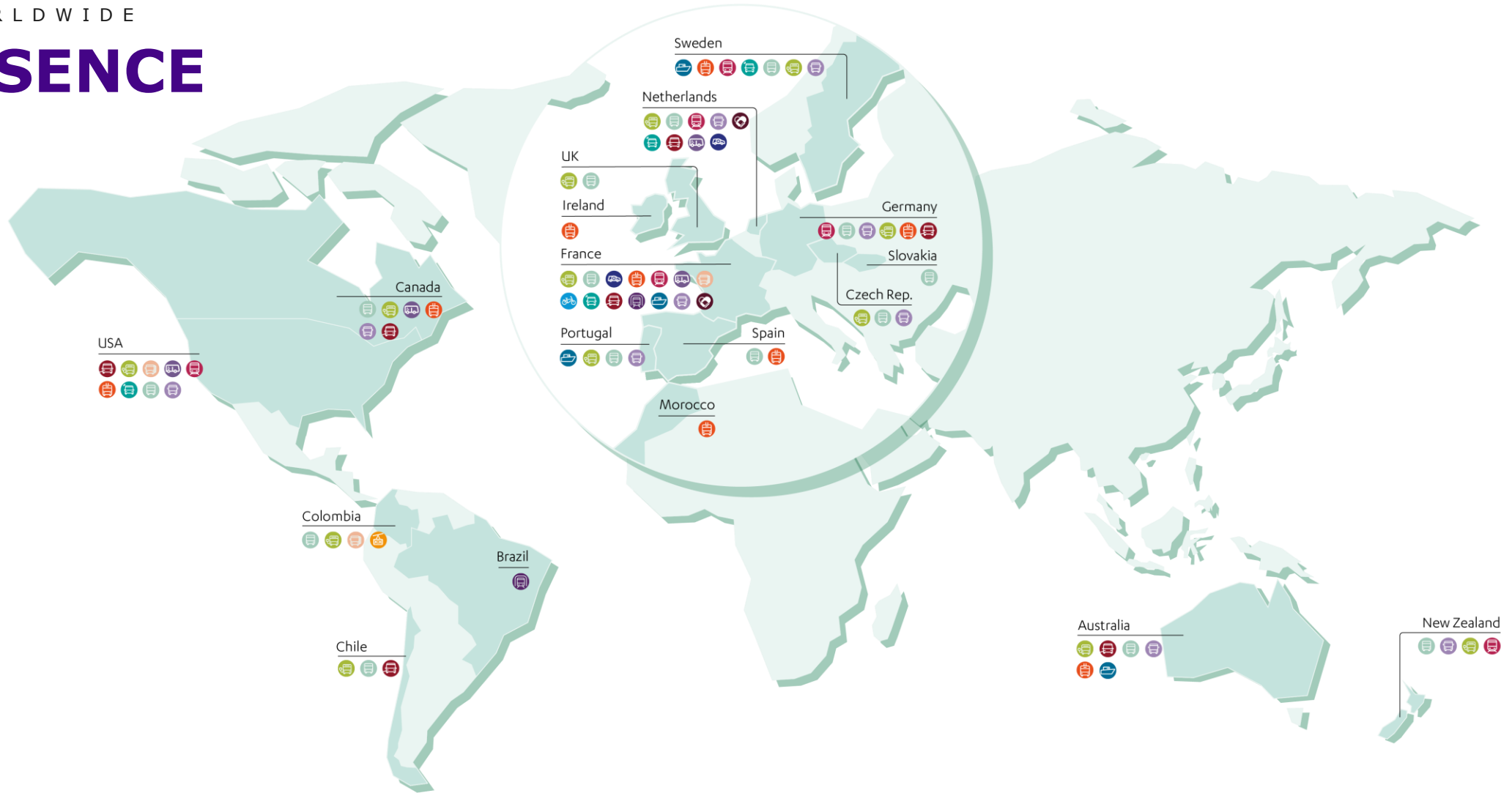


KEY FIGURES

OUTSTANDING ACHIEVEMENTS



PRESENCE

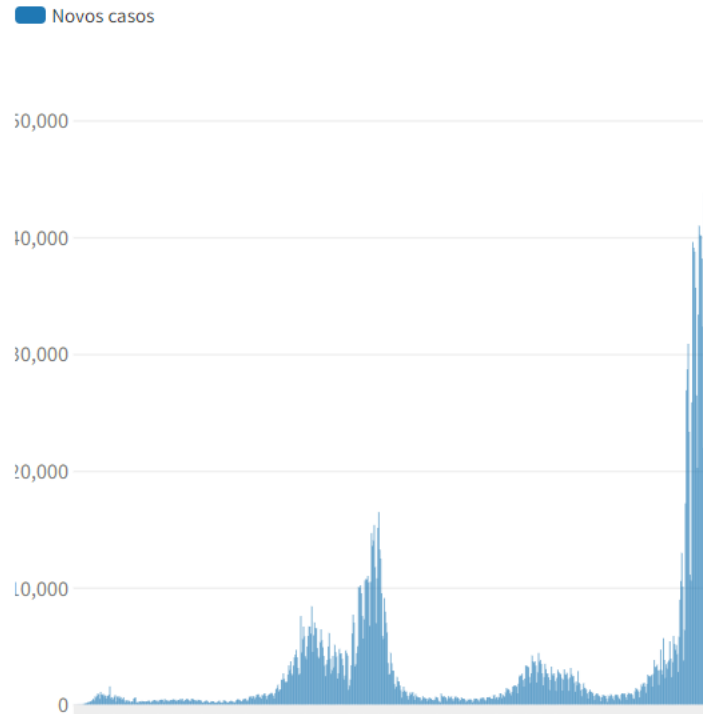


Bus	Light Rail	Transportation on-Demand	Coach	Bicycle share-service
Electric and hydrogen bus	Rail	Paratransit	Water borne transportation	Autonomous vehicle
Bus Rapid Transit	Metro	Community bus	Cable car	Ambulance

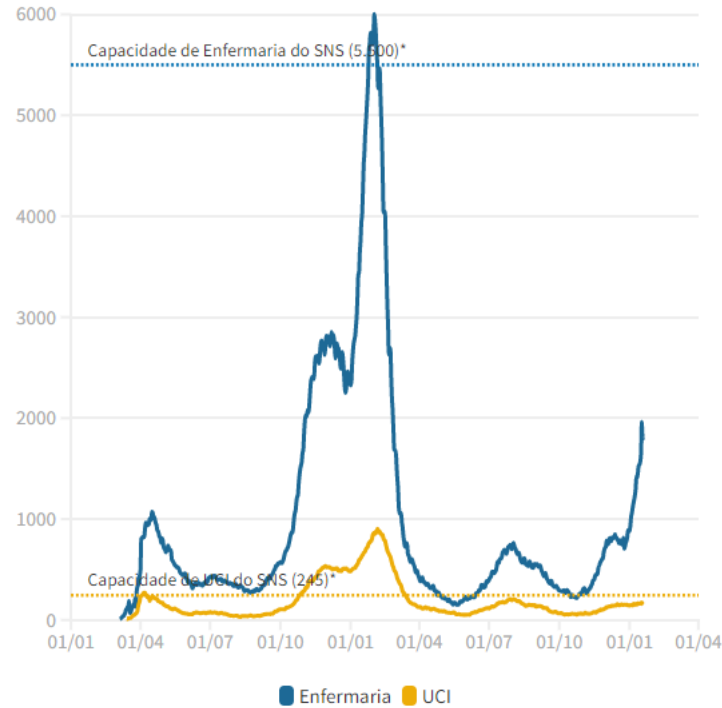
COVID-19

IMPACT 2020

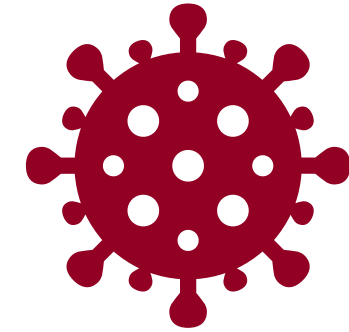
Novos Casos Diários



Evolução Internados Covid-19



Fonte: Ministério da Saúde, em resposta à Renascença
*camas alocadas a doentes com Covid-19 (atualizado a 12 de abril de 2021)



-34% KM vs 2019

-46% passengers vs 2019

COVID-19

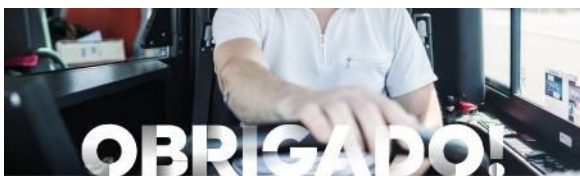
KEY MEASURES



ENTRADA NA VIATURA



- Entrar e sair das viaturas pela porta traseira, sem validação nem venda a bordo;
- Distribuição uniforme das pessoas por todo o autocarro;
- Manter uma distância de pelo menos 1 metro das outras pessoas;
- Evitar parar junto ao motorista e nos espaços próximos às portas de entrada e saída;
- Não utilizar os lugares imediatamente a seguir ao lugar do motorista.



**AOS NOSSOS HERÓIS.
AS NOSSAS EQUIPAS NA LINHA DA FRENTE.**

Aqueles que são deixam o país parado.



SAFETY FIRST

We strengthened our customer service capacity through digital channels.

We keep facilities disinfected and continually clean our fleet.

We have made the correct use of the mask mandatory and we penalize those who do not comply.

We warn about security measures to facilitate compliance.

We offer an essential service to guarantee efficient mobility throughout the territory.

COVID-19

IMPACT ON MOBILITY



TRENDS

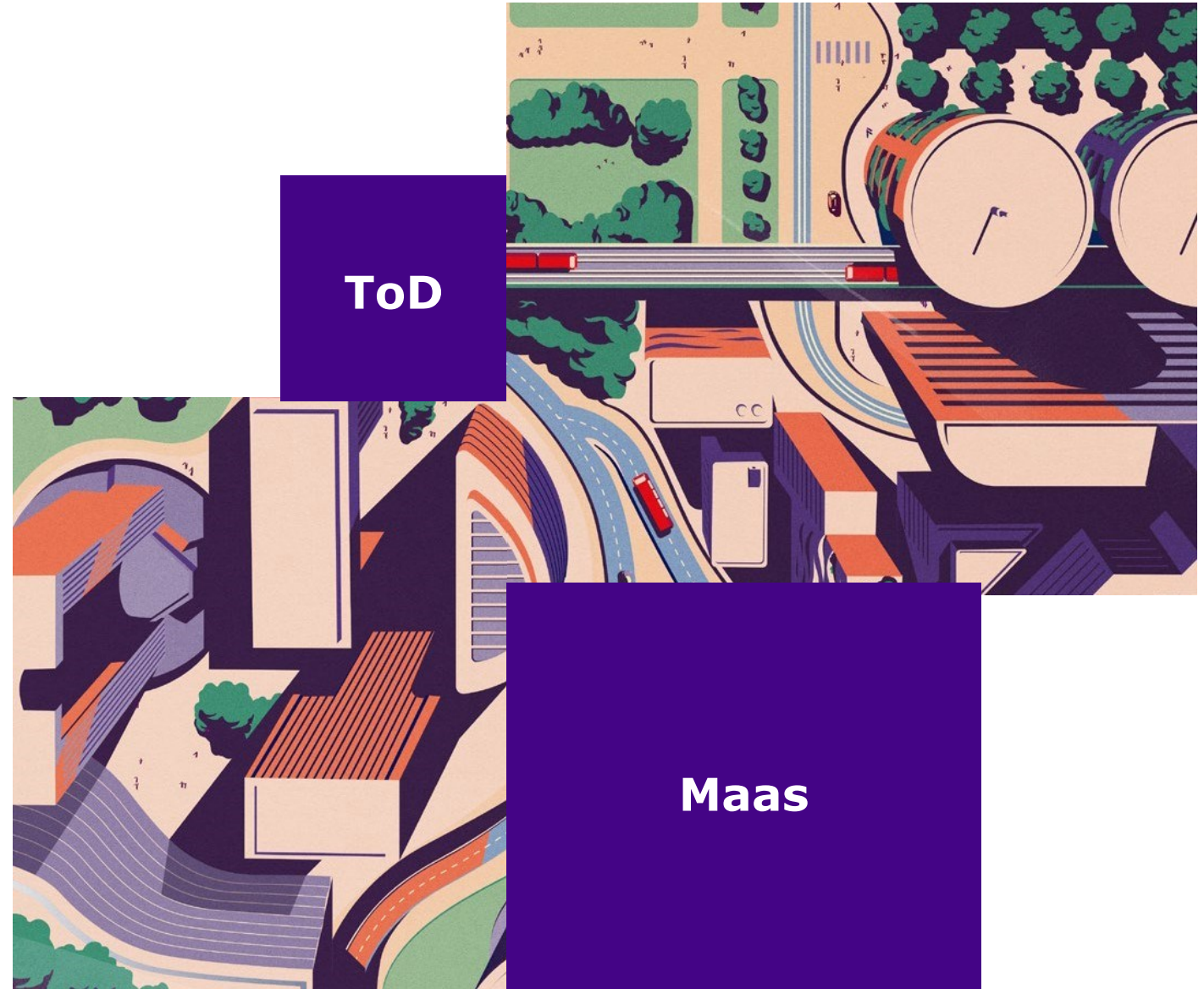
If the last few years have been about promoting public transport, the same may not happen in a post-pandemic world.

With social distancing still very much in mind, the trend will be to focus on private means, namely car, bicycle or scooter (the latter only for shorter distances).

The use of teleworking and the reduction of face-to-face classes is reducing the need for regular daily travel.

MOVING FORWARD

PROVIDING NEW & OPTIMIZED SOLUTIONS



MOVING FORWARD

MaaS

As a forerunner in "MaaS" (Mobility as a Service), we offer passengers a range of simple mobile applications to access a large choice of transport solutions. Ground-breaking tools for a trouble-free travel experience.



KEY FIGURES

32 million people covered

60 million journey searches per year

20 million data processed each day

OUR STRENGTHS

Passengers can use their mobile app to:

- choose between travel options, by calculating the itinerary that suits them best
- store their transport tickets in their telephone
- use a centralized account to pay for all their trips

CONTROL OF THE TRANSPORT CHAIN

Our "MaaS" solutions and our other digital applications enable us to collect and analyze billions of pieces of data of local interest from public and private transport operators.

MOVING FORWARD

ON-DEMAND CONNECTED TRANSPORTATION

Complementary and integrated with regular public transport networks, our solutions are set up to open up regions and provide flexibility and freedom in daily mobility.

KEY FIGURES

More than **900,000** ToD journeys per year

30% of annual reservations via smart phone



IN PORTUGAL

SIM is a project that aims to promote more sustainable mobility, providing populations in regions with a deficit in the supply of public transport, dispersed population density or low social income, with solutions adapted to their needs.

DAILY FLEXIBILITY AND FREEDOM

With 14 million passengers transported each year, we are one of the world leaders in on-demand / microtransit.

We offer flexible and efficient solutions for specific groups, serving low-density areas or periods with lower demand.

Transdev is capable of providing transport authorities with solutions ensuring multi-modal integration and offering passengers seamless travel.



THANK YOU

