

[View this email in your browser](#)

REPLACE

Interreg Europe



European Union
European Regional
Development Fund

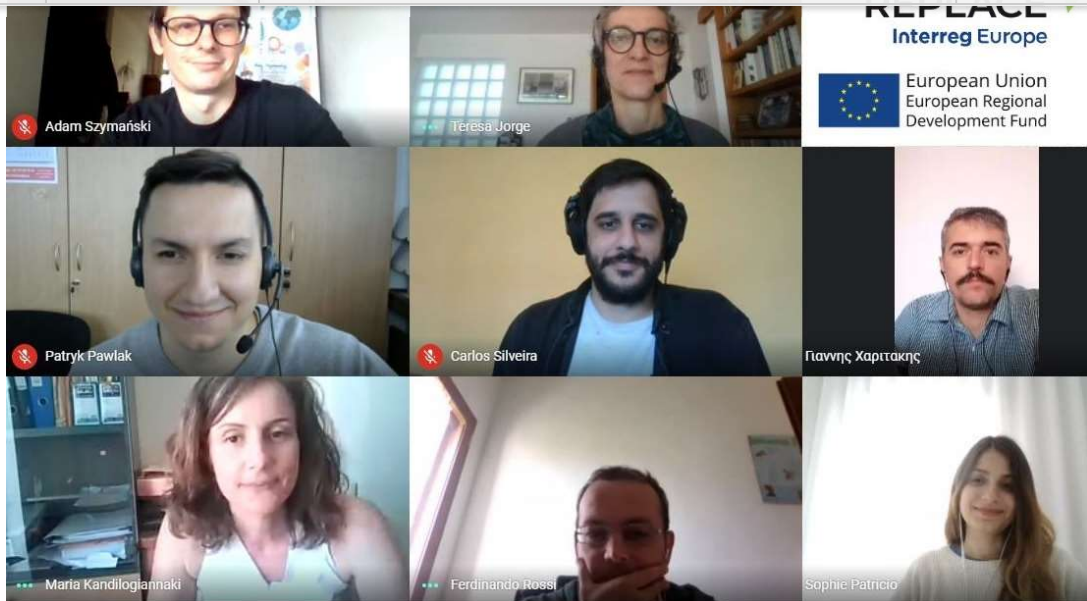
Regional Policy Action for Circular Economy

REPLACE 4th-semester newsletter

[REPLACE partnership](#) would like to take this opportunity to express and demonstrate its support to all people and organizations that are facing hardship due to the COVID-19 pandemic.

Semester number 4 started on the 1st of January 2021 and ended on the 31st of July 2021.

As the pandemic continues, provoking enormous constraints on international travels, REPLACE partnership managed to keep up with the planned activities by arranging several web meetings to proceed with the project commitment to effectively enhance Regional Policy Instruments dealing with circular economy.



REPLACE web meetings

- April 26, 2021 > **Arranging plans for the semester**

The REPLACE Partners gathered for an internal meeting to discuss the arrangements for the semester: [#replaceteam](#) maintained open the possibility to travel for physical gatherings, and organized a series of back-up online events.

<https://www.interregeurope.eu/replace/news/news-article/11867/replace-meeting-n-10/>

- May 24, 2021 > **Discussing possible pilot actions**

Another internal meeting was dedicated to the organizational aspects and to discuss the openings of the requests for possible pilot actions and additional activities. Due to the impossibility of travelling, the tasks related to the exploration of cross-regional synergies, among sectors endowed with complementarities and a great potential for the circular economy transition, had to be arranged in a remote manner and set for June 2021.

<https://www.interregeurope.eu/replace/news/news-article/12110/replace-web-meeting-n-11/>

- June 17, 2021 > **Learning outcomes of local analysis and linked cross-regional synergies**

REPLACE consortium gathered again in a virtual room to talk about the important learning outcomes of the local analysis and the related cross-regional synergies in circular economy value chains. The partners identified and agreed on the methodology to implement such line of work: Miro, an online instrument, was exploited to facilitate the co-creation and the cooperation among the participating public and managing authorities:

capabilities performed through the local analysis) linked to RIS3;

- The common sectors were then emphasised: for each possible synergy, data were enriched by the partners (relevant stakeholders, type of companies, examples of good practices). This way, partners had an overview of the others' sectors and were able to add and state their availability to collaborate.

<https://www.interregeurope.eu/replace/news/news-article/12345/replace-12th-online-meeting/>

The sectors with potential for cross-regional synergies are the following:

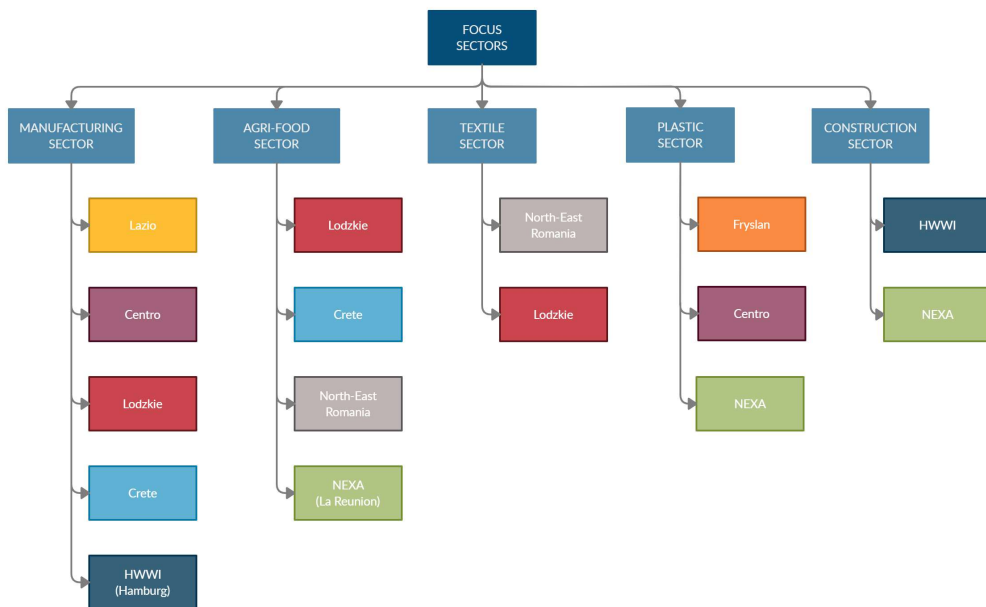
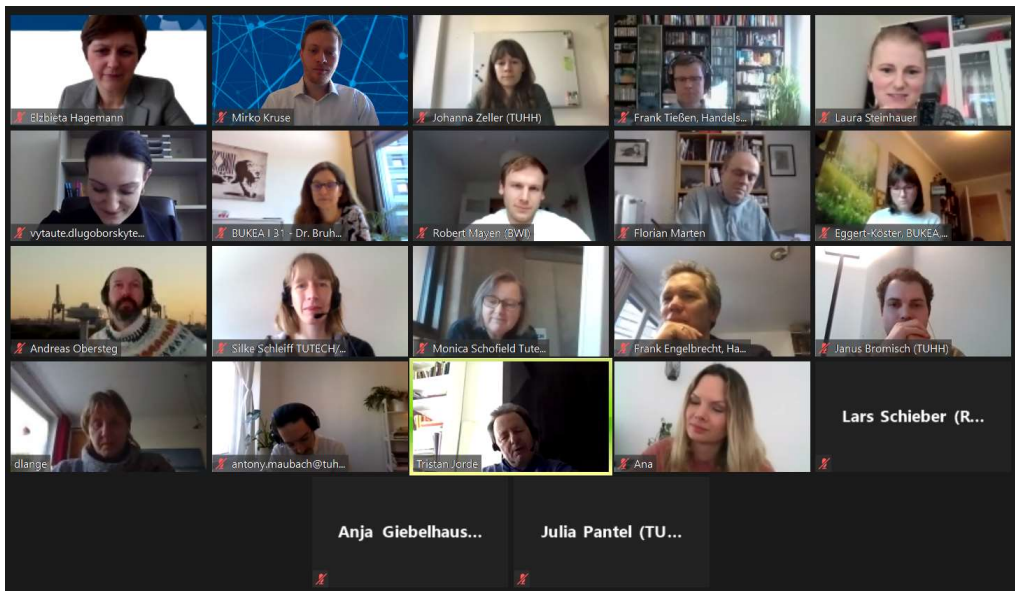


Fig. 1 Focus sectors



To engage local stakeholders in discussing circular economy, [#REPLACEteam](#) HWWI [Hamburg Institute of International Economics](#) paired up with [CIRCuiT](#) (circular construction in regenerative cities) by arranging an online debate that was held on March 02, 2021. During the event, the results of the **REPLACE Local Analysis** were presented and discussed with relevant stakeholders representing the **Quadruple Helix** actors, allowing the collection of relevant feedback.

<https://www.interregeurope.eu/replace/news/news-article/12425/replace-and-circuit-team-up/>

Find out more



Copyright © *2020* *REPLACE*, All rights reserved.

Our mailing address is:

regionalpolicy4circulareconomy@gmail.com

Want to change how you receive these emails?

You can [update your preferences](#) or [unsubscribe from this list](#).

This email was sent to <<Email Address>>

[why did I get this?](#) [unsubscribe from this list](#) [update subscription preferences](#)

REPLACE · Chaussee De Vleurgat · Brussel 1050 · Belgium

