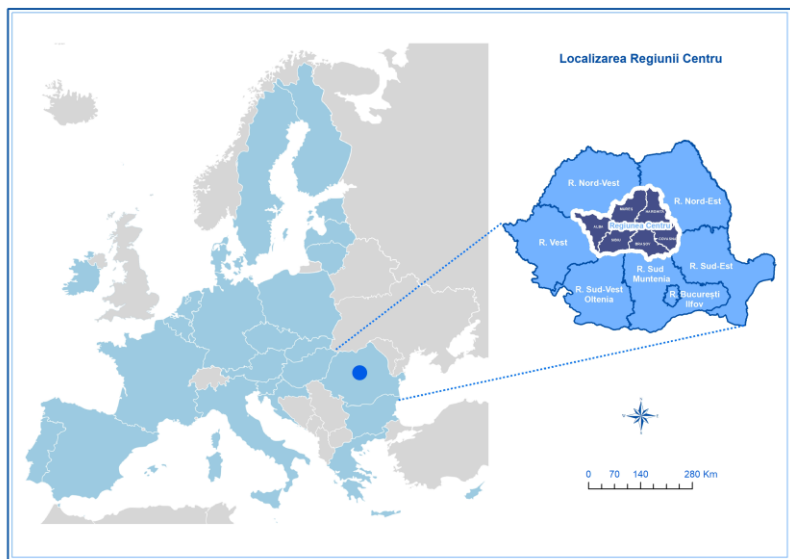


# Regional Development Agency Centru

**From Intermediate Body to Managing Authority for the  
Regional Operational Programme**

**Gabriela Tarau**  
**Regional Development Agency Centru**

# CENTRU REGION



**Centru Region:** 6 counties, 34.100 sqkm; **Population:** 2.63 Million inhab.(2020)  
**Urbanization rate:** 57.4% **Ethnic and linguistic diversity:** Romanians (61.2%), Hungarians(28.6%), Roma (4.7%), Germans (0.4%)  
**G.D.P./capita:** 20500 euro as of 2019; 3<sup>rd</sup> rank in the national hierarchy (66% of EU average)



# CENTRU REGION

## REGIONAL URBAN NETWORK



Total length of public roads in Centru Region is 11.474 km, out of which the length of modernized roads is 5914 km.

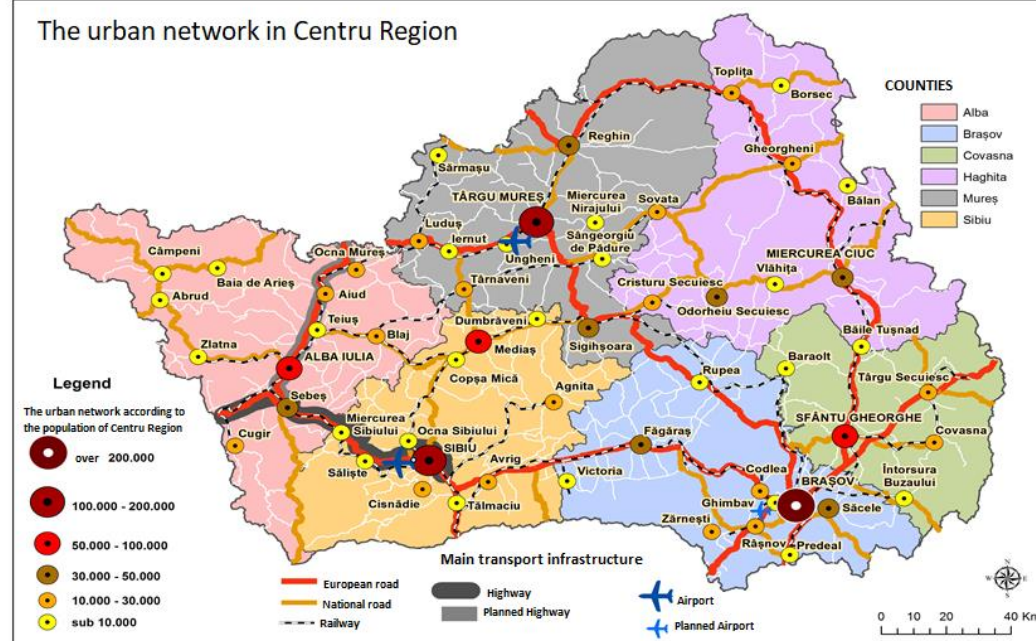
Centru Region is crossed by 4<sup>th</sup> Pan-European Transport Corridor, which ensure a fast connection between South East Europe and Central Europe.

### 57 Local Administrative Units are located in urban areas:

- 1 municipality exceeds 200,000 inhabitants,
- 2 municipalities 100,000 - 200,000 inhabitants,
- 3 municipalities 50,000 - 100,000 inhabitants,
- 7 municipalities 30,000 - 50,000 inhabitants,
- 18 municipalities 10,000 -30,000 inhabitants
- 26 municipalities < 10,000 inhabitants.

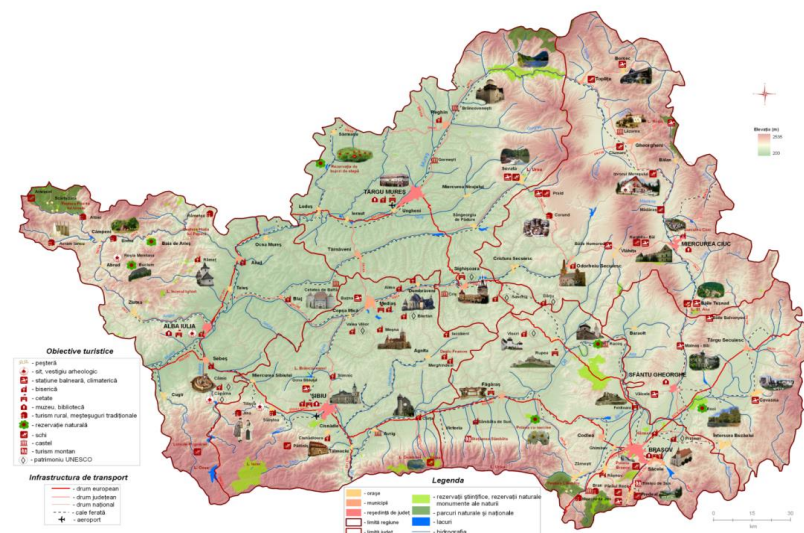
- Currently in Centru Region there are **two Metropolitan Areas**: Braşov and Tîrgu Mureş
- - other structures for supporting local public transport (ex. FUA Alba Iulia)

The urban network in Centru Region



# CENTRU REGION

## TOURISM

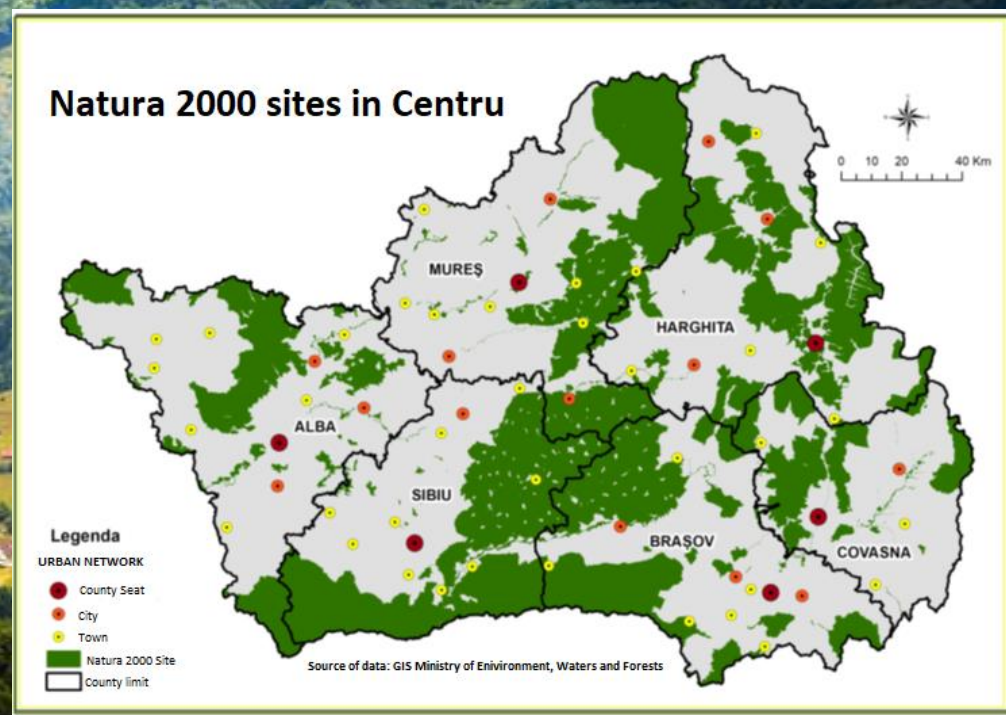


- **Rich built heritage** in both urban and rural areas with historical and architectural value: fortresses, castles, palaces, archaeological remains, churches, monasteries, museum collections, etc.
- Resources for **rural tourism** and agro tourism
- **Natural resources** for ecotourism, adventure tourism, winter sports and spa tourism



# Natural assets

47% of the region's territory is covered by mountains  
37% of the region's territory is covered by forests  
49,1% of the region's territory is covered by Natura 2000 sites



# CENTRU REGION

## ECONOMY OUTLOOK

### Stock of Foreign Direct Investments in Centru Region as of 2019:

- 7.65 Billion € (8.7% of National Stock of FDI, second place following Bucharest-Ilfov Region)

### Regional Exports in 2019:

- 10.65 Billion € (i.e. 15.5% of the total exports of Romania)

### Main groups of export goods :

- Machinery, Electrical equipment 35,9%, Means of transport, parts and components 28,1%, Metals and Objects of Metal 6,7%, Textiles and Textile Clothes 5,1%, Wood and Wood products (3.7%), Chemical Fertilizers (2.4%)

### Pillars of industry in Centru Region

- Automotive
- Food Industry
- Textile, Clothing, Leather and Footwear Industry
- Timber and Furniture
- Construction Materials
- IT, Cultural and Creative Industries
- Aerospace
- Pharmaceuticals Industry





# ABOUT RDA CENTRU

Established	1998, November 20
Legal basis	<a href="#">Law 315/2004</a> on regional development in Romania
Type of organization	<a href="#">Non government organization</a> , <a href="#">Association of public utility</a>
Action area	Centru Region – ALBA, BRAȘOV, COVASNA, HARGHITA, MUREȘ, SIBIU counties
Headquarter	Alba Iulia, Alba county
General Director	Simion Cretu
No. of employees	130
Territorial offices	<a href="#">Brașov</a> , <a href="#">Sfântu Gheorghe</a> , <a href="#">Miercurea Ciuc</a> , <a href="#">Țirgu Mureș</a> , <a href="#">Sibiu</a>

*Acting as an engine for regional development.*



# Territorial bodies for regional development (1)

## Regional Development Board Centru (RDB)

<b>Role</b>	<ul style="list-style-type: none"><li>• Decision making body without legal status;</li><li>• It was established and it works based on partnership principle</li></ul>
<b>Main tasks</b>	<ul style="list-style-type: none"><li>• Verifies and approves the Regional Development Plan;</li><li>• Approves the financial allocation for the regional development;</li><li>• Coordinates the RDA Centru's activities;</li><li>• Endorses the agreements on regional development concluded between RDA Centru and other Parts</li></ul>
<b>Structure</b>	<ul style="list-style-type: none"><li>• 24 members - 4 seats for each county of the region</li></ul>





# Territorial bodies for regional development(2)

## Regional Development Agency (RDA)

### Main responsibilities

#### Regional planning and programming

- **RDP CENTRU** (Reg. Development Plan )
- **RIS3**
- 29 studies and analyzes on regional development topics
- Member of various local or regional bodies

#### Responsible for the implementation of various programs financed by the EU or by the National Government

- Implementation Authority for **PHARE CES**
- Intermediary Body for **ROP 2007-2013** and **Competitiveness SOP 2007-2013**
- Intermediary Body for **ROP 2014-2020**
- **Managing Authority** for **ROP Centru 2021-2027**

#### Partnerships and cooperation projects with other European partners +acting as stakeholder in interregional projects

- 36 projects focused on trans- regional cooperation and capacity development,
- **198 partners from 28 countries**

#### Regional promotion and identification of new opportunities in line with principles and policies on regional development

- Supporting the new investments in the region and promoting the investment sites
- Supporting the business environment

# RDA CENTRU AS INTERMEDIATE BODY

## Main results of the implementation of the programs financed by the EU and National Funds

### Pre-accession Funds 1999-2007

**395 Phare projects**  
Total Budget ≈ 116.6 M. €

**4 Government Programs–  
144 projects**  
Total Budget ≈ 12.74 M. €

**FIDA - Project for Apuseni  
Mountains Development**  
**573 loans**  
Total Budget ≈ 7,4 M. \$

### ROP 2007-2013

**1200 submitted projects**  
Regional Budget ≈ 481,21 M. €

**499 financing agreements**  
Requested amounts ≈ 590 M. €

**432 finalized projects**  
Absorption rate ≈ 82%

**Aprox. 36% of the budget  
dedicated to projects involving  
green components:** Energy  
efficiency in buildings, rehabilitation of  
industrial polluted sites, public lighting,  
bicycle lanes

### Competitiveness SOP 2007-2013

**803 implemented  
projects**  
Total Budget ≈ 320 M.  
€

**664 finalized  
projects**  
Requested amounts ≈  
131,25 M. €

**Absorption rate:  
93,9%**  
Paid amounts ≈  
123,26 M. €

### ROP 2014-2020

Financial allocation for Centru  
Region 660.90 M. € from ERDF +  
127.99 M € from State Budget

**64 Calls for** 12 Priority Axes of the  
ROP

2388 submitted projects, total  
requested amount: 2.82 Billion €

**1041 financing agreements**  
(total requested amount: 1.27  
Billion €; total value of the  
contracted projects 1.535 Billion €

**Aprox. 43% of the projects  
contacted have a green  
components:** IP: 3.1,3.2, 4.1, 4.2,  
5.2, 13.1 (577,5 mil Euro)



# RDA CENTRU AS INTERMEDIATE BODY

Regional Operational Program: 2007-2013 & 2014-2020

From Mobility to Greener Mobility

ROP 2007-2013	I.P. 1.1
no. Projects	52
no. Beneficiary	12
Total amount (mil lei)	786.36
Total amount (mil euro)	159.37



ROP 2014-2020	I.P. 3.2	I.P. 4.1
no. Projects	10	24
no. Beneficiary	7	6
Total amount (lei)	439.44	1173.20
Total amount (euro)	89.06	237.76

127 streets over 73 km long;  
 943 thousand sqm of modernized  
 access roads and overpasses;  
 39.590,73 sqm of new built bike path;  
 99.744,68 sqm of new built / rehabilitated pedestrian  
 space;  
 22.453 sqm of unused and degraded space was  
 rehabilitated;  
 5 end-of-line stations rehabilitated;  
 2708 parking spots;  
 1 computerized management system of public  
 transport;  
 1 security monitoring system with 25 surveillance  
 cameras

Bike path : 65,485 km+ 44801 sqm  
 Bus stations : 374  
 Bikesharing stations : 44, Bike: 540  
 Park&ride (parking spots): 868  
 Pedestrian space : 55,482 km+ 204235 sqm  
 Public transport: 1 terminal (12 platforms),  
 1 garage (11740 sqm ), 4 computerized management systems, 1 traffic  
 management system, 2 eticketing system, 2 depots  
 dedicated lanes for public transport (new+modernized): 38598,26 km +  
 150051 sqm  
 Trolleybuses: 28, Minibuses: 5, electric and hybrid  
 buses:173

# RDA CENTRU AS INTERMEDIATE BODY

Regional Operational Program: 2007-2013 & 2014-2020

Energy efficiency in residential and public buildings, public lighting + I.P. 13.1

ROP 2007-2013	I.P. 1.2
no. Projects	12
no. Beneficiary	3
Total amount (mil lei)	63,66
Total amount (mil euro)	12,9

ROP 2014-2020	I.P. 3.1A	I.P. 3.1B	I.P. 3.1C	I.P. 13.1
no. Projects	23	59	11	11
no. Beneficiary	11	28	9	9
Total amount (mil lei)	184,77	344,47	134,95	134,95
Total amount (mil euro)	37,45	69,81	27,35	27,35

13 projects,  
3687 rehabilitated apartments



23 projects,  
5370 rehabilitated apartments





# RDA CENTRU AS INTERMEDIATE BODY

Regional Operational Program: 2007-2013 & 2014-2020

Urban regeneration and Green spaces in figures

ROP 2007-2013	I.P. 4.2
no. Projects	4
no. Beneficiary	3
Total amount (mil lei)	68,45
Total amount (mil euro)	13,87



ROP 2014-2020	I.P. 4.2	I.P. 5.2
no. Projects	6	8
no. Beneficiary	6	8
Total amount (mil lei)	72,46	39,79
Total amount (mil euro)	14,68	8,06

# ABOUT RDA CENTRU

## REGIONAL PLANNING

- The Regional Development Agency Centru (RDA Centru) is **the sole legal entity responsible for implementing the regional development policies in Centru Region.**
- **PARTNERSHIP – Fundamental principle for regional development**

---

### Regional partners for planning and programming activities for the 2021/2027 period

---

Committee for Regional Planning : 43 member organizations, 6 working groups at county level, 7 thematic working groups)

Coordination of elaboration work for the **Regional Development Plan 2021/2027**

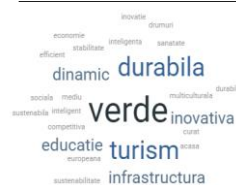
Monitoring the previous Regional Development Plan 2014/2020

Regional Consortium for Innovation – 39 member organizations: clusters, companies, universities, public authorities

Elaboration, monitoring and implementation of Smart Specialisation Strategy for Centru Region 2014/2020 (RIS3 Centru)

Updating and Revising **RIS3 Centru 2021/2027**

---



### Our Vision for 2021- 2027

**Centru Region will become a cleaner & more attractive region for its inhabitants and tourists, with a competitive economy based on knowledge and innovation, whose each citizen will take care for preserving the good state of the environment and for the sustainable use of natural resources**





# OUR VISION TOWARDS A GREENER REGION

## THE REGIONAL DEVELOPMENT PLAN 2021-2027 (RDP CENTRU)

- **The Regional Development Plan for Centru Region 2021/2027** represents the **main planning document** elaborated at regional level and assumed by the decision makers in Centru Region, Romania.
- The RDP Centru is accompanied by a **regional portfolio of strategic projects** consisting of the project proposals of the regional partners.
- **RDP is connected to the programming process at regional level and sets the ground for developing the Regional Operational Programme for Centru Region 2021-2027.**
- **Strategic areas identified in RDP 2021-2027:**

derived from the 5 objectives of the EU Cohesion Policy for 2021-2027

D.S.1 Territorial development, sustainable urban development

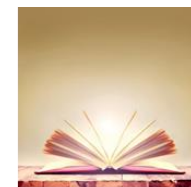
D.S.2 Economic competitiveness, research and development, innovation and smart specialization

D.S.3 Human resources, social inclusion, employment and health

D.S.4 Environment, energy efficiency and climate change

D.S.5 Tourism and cultural heritage

D.S.6 Rural development, agriculture and forestry



# OUR VISION TOWARDS A GREENER REGION

## SMART SPECIALISATION STRATEGY FOR CENTRU REGION 2021-2027 (RIS3 CENTRU)

- RIS 3 Centru supports **building efficient partnerships to deliver inclusive innovation regional processes**
- RIS 3 Centru aims to **boost innovation** in Centru Region by using the existing regional advantages & assets



### Centru Region RIS 3 Domains

Agriculture and food industry

Forestry, wood processing, furniture production  
Automotive and mechatronic industries

IT and creative industries

Textile and leather industry

Health

Aerospace industry

Tourism

Sustainable built environment



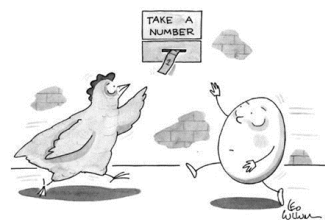


# RDA CENTRU

## COOPERATION WITH INTERNATIONAL PARTNERS

- **Cooperation is a key element in Centru Region.**
- **198 partners from 28 countries**
- From January 2007 till June 2021, RDA Centru was involved as partner in **36 regional projects**.
- These projects aimed at improving regional policies in various domains, such as energy efficiency & renewable energy production, circular economy, SMEs support, innovation and internationalization, development of rural areas, increasing the competitiveness of SMEs in the food industry, training etc.
- Total Budget: **approx. EUR 4,7 million.**

RDA Centru acts as **stakeholder** in the projects proposed and implemented by local organisations



The results of these projects contribute to their improvement of the regional strategies

**From 2021, when RDA Centru will act as MA into ROP Centru 21/27 -RDA CENTRU WILL RECEIVE action plans for its improvement**





# The new framework for cohesion policy

## **REGIONAL OPERATIONAL PROGRAMME 2021-2027**



# THE NEW FRAMEWORK FOR COHESION POLICY



- The European regulations adopted on **30.06.2021**

- Strategic approach on **5 policy objectives**

1. a more **competitive** and **smarter** Europe
2. a **greener**, low-carbon transitioning towards a net zero carbon economy
3. a more **connected** Europe by enhancing mobility
4. a more **social** and inclusive Europe
5. Europe closer to **citizens** by fostering the sustainable and integrated development of all types of territories

- Thematic focus of funds on the first two objectives:** innovation-research, digital agenda, SME support, environment and carbon economy

- Climate targets** 30% ERDF and 37% FC

- Greater **empowerment of local, urban & territorial authorities** in the management of the funds: dedicated policy objective implemented only through territorial and local development strategies- minimum 8% of the ERDF for sustainable urban development

- Simplification of rules** (single audit, SCO, single set of rules, etc.), flexibility

- Strengthening **visibility and communication**

- The **principle of partnership**

(in each phase of the implementation process)

## Priorities

**Modern focus:** green, smart, rule of law, social rights, open data



**Solidarity:** Support for less developed regions and economic transition across the EU



**Democracy:** Partnership principle & code of conduct at every stage of implementation



**Simplification:** 8 funds but 1 regulation; funds disbursed based on needs, provisions for future crises





# THE NEW FRAMEWORK OF COHESION POLICY IN ROMANIA

EU-FUNDED PROJECTS

## COHESION POLICY IN ROMANIA



The total allocation proposed for Romania through cohesion policy, in current prices, is **30.305 billion Euros**, of which:

- 17,437 billion Euro ERDF including Interreg
  - 4.628 billion Euro FC of which 1.090 billion Euro were transferred to CEF
  - 8.239 billion Euro FSE +
- + 1.947 billion Euro Just Transition Fund  
+ 29.2 billion Euro NRRP - through the Recovery and Resilience Mechanism  
+ 19.38 billion Euros through the Common Agricultural Policy

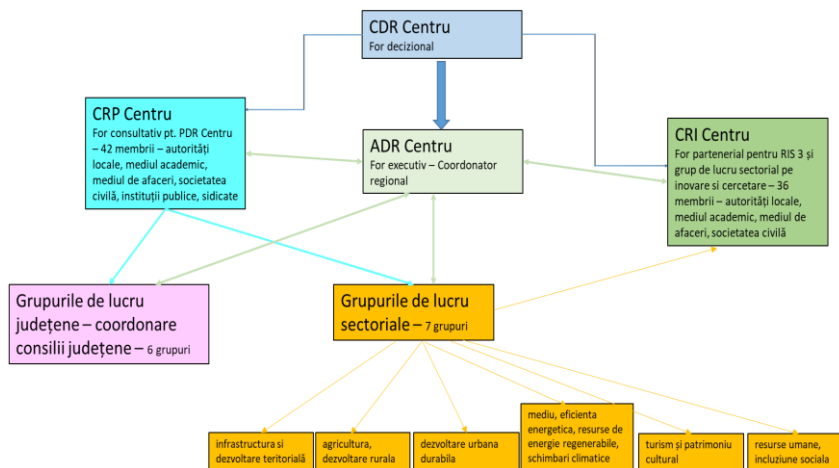
**Total Romania: 80.832 billion euros**

# ELABORATION ROP CENTRU 2021-2027

## Two way approach

### Regional level

- RDP Centru
- Smart Specialization Strategy Centru
- Regional analysis
- Consultations with regional partners
- Regional project portfolio



### National level European level

- National strategic documents
- Proposals for EC Regulations for the period 2021-2027
- EC recommendations for Romania
- Comments and discussions with the EC on previous versions

### Lessons learned

# ROP CENTRU 2021-2027

- Contains investments related to all 5 policy objectives
- Priority axes - 8 PA for investments + 1 PA of technical assistance
- Proposed budget: 1390.15 million Euros, of which 1181.62 million Euros FEDR

- RDA Centru was designated as MA for ROP 2021-2027 – OUG 122/2020
- Version 2 of ROP Centru 2021-2027

- In 2020 was elaborated the structure and a first version of the ROP 2021-2027 Centru, and discussed with the coordinating institutions at national level, with DG Regio, and also with the actors at regional level.

- At the end of April 2021, version 2 of the Program was completed, and sent to MIPE and MDLPA, and to the EC - DG Regio, but previously it was also sent to the regional partners.

- Consultations with the EC - DG Regio on this version were organized between May and June 2021





# STRUCTURE OF ROP CENTRU 2021-2027

PRIORITIES	ERDF (mil euro)
Priority 1 - A competitive region through innovation and dynamic enterprises for a smart economy	229.99
Priority 2 – A digitized region	116.38
Priority 3 - A region with environmentally friendly communities	198.71
Priority 4- A region with cities developing sustainable urban mobility	198.71
Priority 5 - An accessible region	168.03
Priority 6 – An educated region	77.83
Priority 7 – A region with sustainable tourism	21.26
Priority 8 – An attractive region	119.80
Priority - 9 - Technical Assistance	50.88

# Priority 3 ROP 2021-2027

## PO 2 , SO b(i) Promoting energy efficiency measures

### Operations of an indicative nature:

*Support to improve the energy efficiency of residential buildings (MFHs) in the Centru Region, including structural consolidation measures based on the level of exposure and vulnerability to identified risks, demonstration projects and support measures contributing to increasing the share of renewable sources in the energy consumption of these buildings;*

*Support to improve the energy efficiency of public buildings from Centru Region, including public buildings identified as historic monuments, structural consolidation measures based on the level of exposure and vulnerability to identified risks, demonstration projects and support measures contributing to increasing the share of renewable sources in the energy consumption of these buildings.*

*Support & capacity building activities/measures for public authorities (measure for supporting the public authorities in preparing/drafting "deep renovation" projects proposals, good practices guidelines, solutions etc on energy efficiency & deep renovation*

### Regional targets -

**2029**

Residential buildings

(RCO18): **3800**

**apartaments**

public buildings (RCO19):

**72600 sqm rehabilitated**



## Priority 4 ROP Centru

### PO 2 , So 3.b (vii) Improving the protection of nature and biodiversity, green infrastructure in particular in urban areas and reducing pollution

#### Operations of an indicative nature:

conservation of urban biodiversity and promote green infrastructure in urban areas / functional urban areas in the Central Region (such as interventions aiming the *reconfiguration of the street network, green corridors, revitalisation of degraded spaces, investments aimed at revitalizing degraded spaces and capitalizing them as green spaces, areas of social or economic utility*) and / or blue infrastructure in urban areas / functional urban areas from Centru Region (such as banks/shore works in urban areas, urban corridors, etc.), including technological innovations that support green infrastructure / blue infrastructure;

**Construction/ modernization / extension of green spaces** in urban areas / functional urban areas in the Central Region

Reconversion and refunctionalization of degraded, vacant or unused lands and areas within the urban areas of Centru Region

Capacity building measures for the potential beneficiaries in planning the activities, elaboration of plans / strategies / territorial studies at FUA/ ZM level, based on local urban plans, mapping the needs of an area - in correlation with the Urban Integrated Development Strategies

Reconversion and refunctionalization of degraded, vacant or unused lands and areas within the urban areas of Centru Region Animation activities an raising awareness of the population regarding the protection of nature and biodiversity in urban areas as part of the promoted projects

#### Regional targets -

**2029**

Surface of green/blue infrastructure(RCO 36)

70 ha



# Priority 4 ROP 2021-2027

## PO2, So 4.b (viii) Promoting sustainable multimodal urban mobility

- *Development of clean urban infrastructure: development of sustainable urban mobility paths, cycling infrastructure, pedestrian planning, the introduction of bike-sharing systems, monitoring systems, etc., including existing publicly owned utility infrastructure.*
- *Developing and optimising public transport through investments in rolling stock and related transport infrastructure;*
- *Development of alternative fuel infrastructures;*
- *Development of urban mobility management systems such as traffic management systems, mobility applications, park & ride systems, etc.*

### Regional targets - 2029

*Capacity of environmentally friendly rolling stock for collective public transport – 15.000 (RCO 57)*

*150 electric buses*

*Km bicycle lanes – 160 km (RCO58)*

*20 charging stations (RCO59)*

*5 digitalised mobility systems (RCO 60)*



# ROP CENTRU 2021-2027

## ➤ NEXT STEPS

- Consultations with the regional and national partners to have the final version for the types of interventions that will be included in the ROP 2021-2027 Centru, in correlations with other programs at national level.
- Elaboration of the final version of the ROP 2021-2027 for the Centru Region and submission to EC.


## HOW CAN YOU CONTRIBUTE:

- ☐ attend the consultations, respond to surveys



- ☐ prepare new interregional projects tackling ROP Centru 21/27



An aerial photograph of a lush green forest. A light-colored, winding path or road forms a large, irregular circle in the center of the image. The trees are dense and vibrant green.

# ***Thank you for your attention!***

**For more info do not hesitate to contact us**

**RDA Centru**

**Regional Policies and Programming Unit**

**12 Decebal St, Alba Iulia**

**Phone (+40) 258 - 818616**

**E-mail: [office@adrcentru.ro](mailto:office@adrcentru.ro)**