



CD-ETA
Interreg Europe



European Union
European Regional
Development Fund

Digitalized Intangible Cultural Heritage in Estonia and Estonian National Museum

Kristel Rattus, researcher-curator, kristel@erm.ee

Estonian National Museum

DIGITIZATION OF INTANGIBLE CULTURAL HERITAGE

October 17-19, 2017, Škofja Loka, Gorenjska, Slovenia



- the Museums Public Portal: the digital database for objects, photographs and other materials found in Estonian museums: www.muis.ee
- Estonian folklore databases: <http://en.folklore.ee/dbases/>
- Databases of National Archive, e.g.
 - Saaga (database of documents): <http://www.ra.ee/dgs/explorer.php>
 - Fotis (database of photographs):
<http://www.ra.ee/fotis/index.php?lang=en>
- Database of Estonian National Broadcasting: <https://arhiiv.err.ee/>
- Database of Estonian Films: <http://www.efis.ee/en>
- (Etc.)

UNESCO World Heritage Convention (1972)

- monuments: architectural works, works of monumental sculpture and painting, elements or structures of an archaeological nature, inscriptions, cave dwellings and combinations of features, which are of outstanding universal value from the point of view of history, art or science;
- groups of buildings: groups of separate or connected buildings which, because of their architecture, their homogeneity or their place in the landscape, are of outstanding universal value from the point of view of history, art or science;
- sites: works of man or the combined works of nature and man, and areas including archaeological sites which are of outstanding universal value from the historical, aesthetic, ethnological or anthropological point of view.

UNESCO Convention for the Safeguarding of the Intangible Cultural Heritage (2003, hereafter, ICHC)

- the practices, representations, expressions, knowledge, skills – as well as the instruments, objects, artefacts and cultural spaces associated therewith – that communities, groups and, in some cases, individuals recognize as part of their cultural heritage. This intangible cultural heritage, transmitted from generation to generation, is constantly recreated by communities and groups in response to their environment, their interaction with nature and their history, and provides them with a sense of identity and continuity, thus promoting respect for cultural diversity and human creativity (UNESCO Convention 2003; Article 2:1)

ICH Practices in Estonia: the Inventories (1)

- ICH Inventory of the Folk Culture Centre
 - operates under the administration of the Ministry of Culture
 - is consulted by the Estonian Council for Intangible Cultural Heritage, which also operates by the Ministry of Culture of Estonia
 - organises various training courses, arranges state support programmes for the cultural regions of Estonia, and other cultural activities
 - 2010: home page www.rahvakultuur.ee/vkpnimistu
 - in order to compile inscriptions, financial support can be applied for
 - 2010: 52 inscriptions; 2016: 153 inscriptions. The number of authors of inscriptions amounts to 46

OTSING

Täpsem otsing

• ASUSTUS, ELUKORRALDUS ja
ELUKESKKOND

• LOODUSVARADE
MAJANDAMINE

• TOIT JA TOITUMINE

• KÄSITÖÖ

• KEEL JA POEETILINE
FOLKLOOR

• KOMBESTIK JA USUND

• AJAVITELISED JA
MÄNGULISED TEGEVUSED

Eesti vaimse kultuuripärandi nimistu

Milline koht on traditsioonilistel teadmistel ja oskustel meie igapäevaelus? Kas oskame neid märgata ja väärtustada? Kas peame näiteks vajalikuks vikatiga niita, kui trimmer teeb selle töö palju kiiremini ära?

Vaimse kultuuripärandi nimistu vahendusel saad tutvuda põlvest põlve edasiantud teadmiste, oskuste, kommete ja tavadega, mis on olulised meile ja meie kaasaegsetele.

Nimistu juhindub [UNESCO vaimse kultuuripärandi kaitse konventsiooni](#) põhimõtetest ja on üks elava pärandi hoidmise ja mõtestamise vahendeid. 2010. aastal avatud veebilehte haldab Rahvakultuuri Keskus.

Osaledes nimistu sissekannete koostamises, saad ka ise vaimse pärandi märkamisele, hoidmisele, väärtustamisele ja edasi andmisele kaasa aidata. Täpsema info leiad Rahvakultuuri Keskuse [kodulehelt](#).

[Nimistu kasutusjuhend](#)

[Sissekande koostamise juhend ja vormid](#)

Nimistusse on juba kantud terve rida nähtusi, kombeid, tavasid, oskusi ja teadmisi. Lisaks saad teha tutvust nendega seotud inimeste, asutuste ja ühenduste, paikade ja piirkondadega.



[Ambla kihelkonna rahvariiete valmistamine](#)



[Haabia ehitamine Soomaal](#)



[Haapsalu sallide ja rättide kudumine](#)

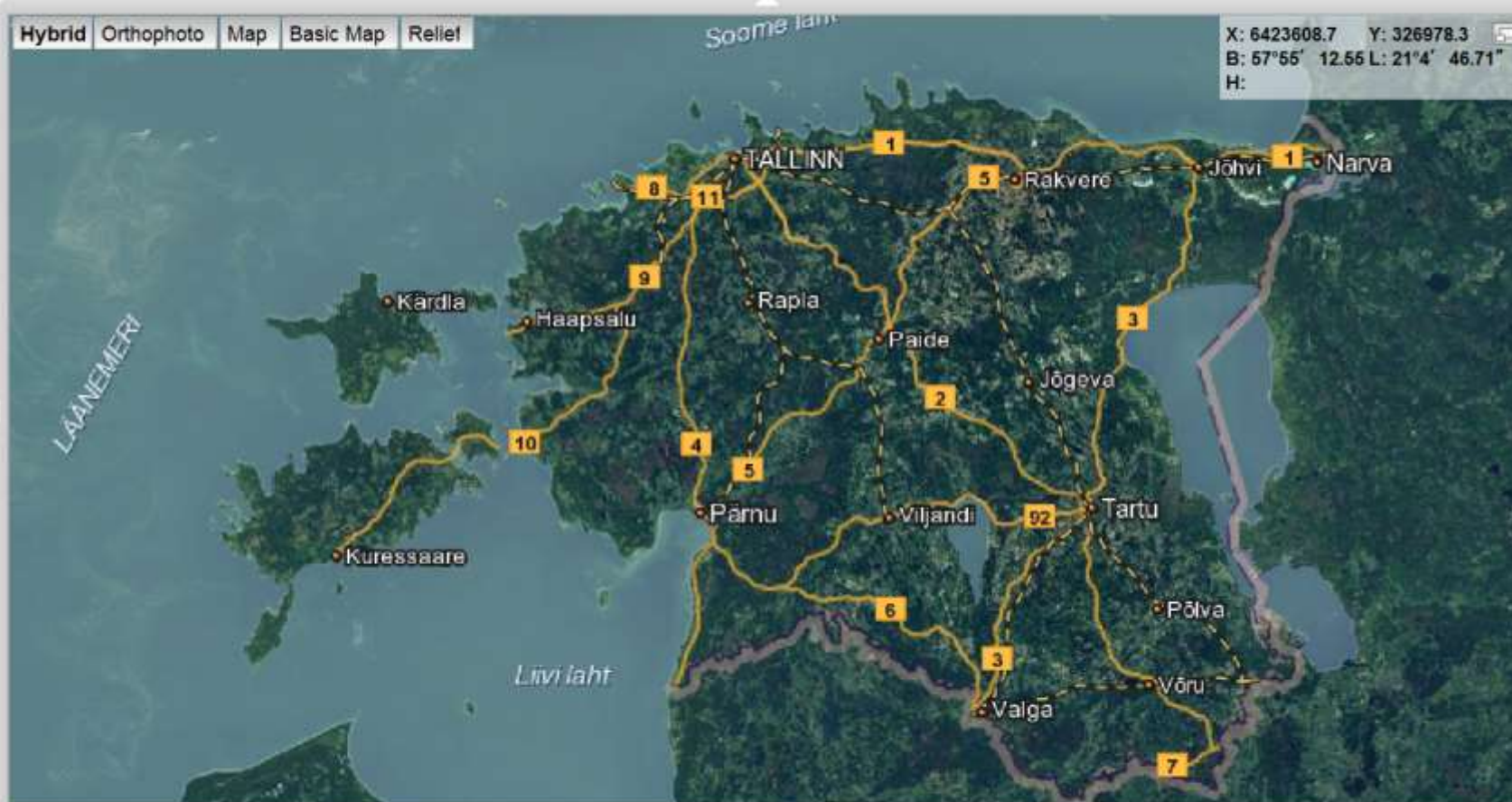
ICH Practices in Estonia: the Inventories (2)

- Heritage Culture Inventory of the State Forest Management Centre
- “the traces of the activities of previous generations in the landscape. It is part of our culture, a small piece of our national heritage. The commonest heritage cultural sites are the sites of farm buildings, stone fences, old forest tracks and place names. The typology of heritage culture is incomparably more varied – all you have to do is notice.”
(<https://www.rmkk.ee/for-a/heritage-culture/what-do-i-need-heritage-culture-for>)
- 37 000 objects have been mapped (no intangible culture phenomena, though)

File Edit View Favorites Tools Help



Hybrid Orthophoto Map Basic Map Relief



X: 6423608.7 Y: 326978.3
B: 57°55' 12.55 L: 21°4' 46.71"
H:



EST ENG

Identify

Map application

Cultural Heritage

select county

select range

select scale

Search by address/ID

ex. „Mustamäe tee 51, Tallinn“

Using comma while entering the search, a full address is searched. Using space, a proximate address is searched.

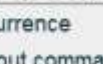
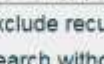
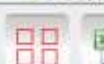
As result the first 100 items are displayed. When the searched object is not among them, specify the search criteria or use the link at the end of the search.

[Addressregister](#)

To specify the search criteria, click on the button "Show extra filters"

☐ Kuva lisafiltrite paneel

☐ Sulge lisafiltrite paneel



☐ Exclude recurrence

☒ Search without commas

Search (0/0)

Object info

Printings

Land Board Estonian Environment Agency State Forest Management Centre
e-mail: kaardirakendus@maaamet.ee phone: 6 750 866

0 50 100 150km

System solution by DATEL AS

Scale ca: 1:2136251

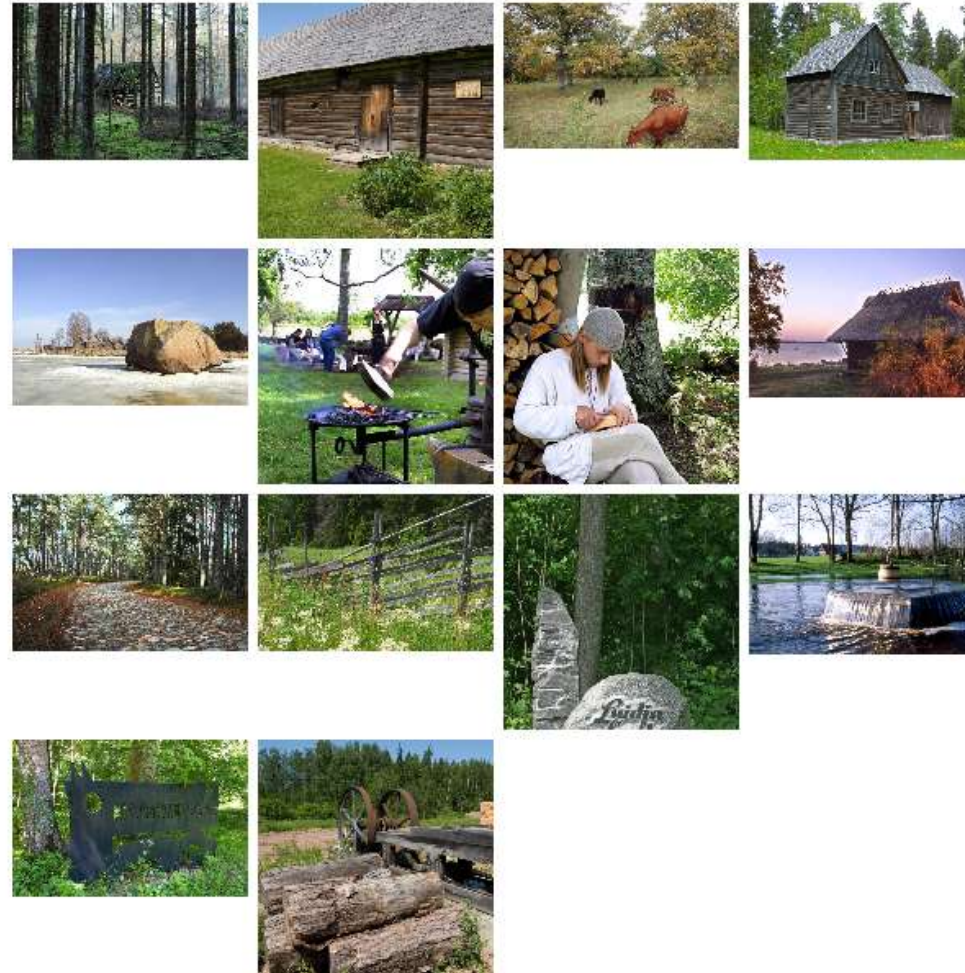
What do i need heritage culture for?

Heritage culture objects

- Database
- **Gallery**
- Koiva-Gauja heritage culture and conservation area

Heritage culture on outings

Gallery of the heritage culture objects



Digital ICH in Estonian National Museum

- 1909-1990s: Estonian pre-industrial peasant culture
- 1990s onwards: late and current everyday culture of all inhabitants of Estonia
- Collections include objects, photographs, drawings, films, manuscripts
 - ICH: traditional handicraft techniques, food culture, traditional rituals, etc.
- Digital exhibits: texts, large amounts of data, emotional and fun-providing exhibits



Thank you for your attention!

Kristel Rattus kristel.rattus@erm.ee