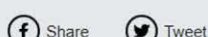




RETRACE A Systemic Approach for Regions Transitioning towards a Circular Economy

RETRACE aims at promoting systemic design as a method allowing local and regional policies move towards a circular economy when waste from one productive process becomes input in another, preventing waste being released into the environment.
RETRACE addresses the EU challenge of transitioning towards a Circular Economy following the priorities set up by the "Flagship Initiative for a Resource-efficient Europe" for a shift towards a resource-efficient, low-carbon economy to achieve sustainable growth as enshrined in Europe 2020 strategy and the EC Communication "Towards a circular economy: A zero waste programme for Europe".

[more about RETRACE project](#)



RETRACE recently



FIELD VISITS

During the first semester Retrace project partners and stakeholders have been visiting Torino and Bidart to share the good practices active in these regions.

You can see the video of [the first Field Visit in Torino \(Regione Piemonte, Italy\)](#) that was held on 19 April 2016 and was hosted by the lead partner ([Politecnico di Torino](#)). Eight Good Practices in [Regione Piemonte](#) were presented and a training on the main topics, Systemic Design and Circular Economy, was provided.

The [second Field Visit](#) in Bidart (Nouvelle Aquitaine, France) was held from 22 to 23 of September. The French partners ([Estia](#) and [Apesa](#)) presented eight good practices in their region and gave the opportunity to visit some of them in person.

REGIONAL DISSEMINATION EVENTS



Retrace partners have organized their first Regional Dissemination Event (one in each partner country) aimed at disseminating the content and objectives of RETRACE project to the wider public. Participants to the events included local mayors, representatives of local and regional organizations, enterprises and individuals: [Spain](#), [Italy](#), [Slovenia](#), [Romania](#) and [France](#).

EUROPEAN WEEK OF REGIONS AND CITIES

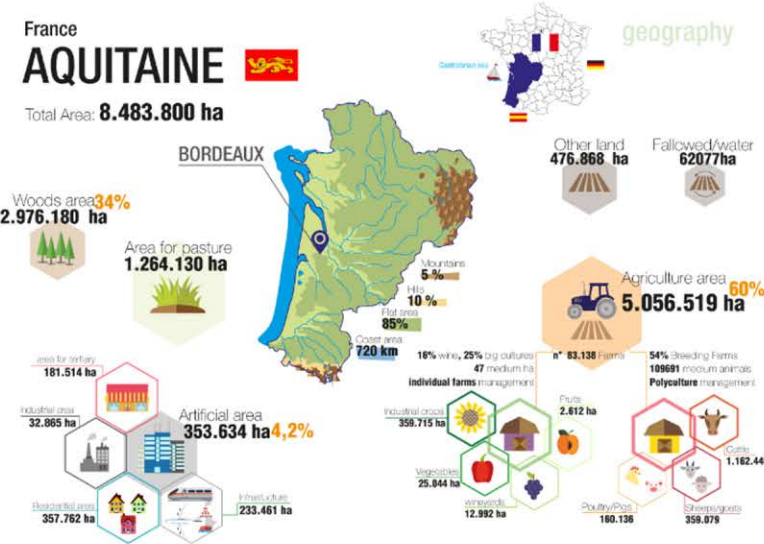


Retrace project took part to the [14th European Week of Regions and Cities](#) through the Regional Dissemination event held in Turin on 26 September, which was included as a local event.

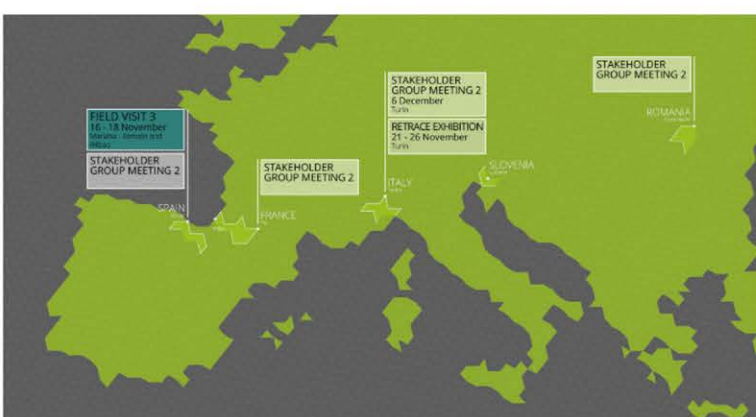
HOLISTIC DIAGNOSIS

The aim of the Holistic Diagnosis (HD) is to analyze the territorial and policy context of each partner region to identify policy gaps and bridge them through the project. The HD has been divided in three steps:

- Step 1. Holistic analysis of territories (see picture below);
- Step 2. Analysis of current policies;
- Step 3. Analysis of economic and industrial sectors.



RETRACE next events



FIELD VISIT 3
17 - 18 November
Lea-Artibai and Bilbao

It is going to be held by the Basque partners, from 17 to 18 of November.

STAKEHOLDER GROUP MEETING 2
MEETING 2
November and December

It is going to be held by each partner of Retrace project.

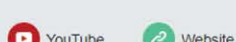
RETRACE EXHIBITION
21-26 November
Turin

FIELD VISIT 4
February
Netherlands



Interreg Europe
www.interreg.eu
[@interreg](https://twitter.com/interreg)

Retrace
www.interreg.eu/retrace
[#retrace](https://twitter.com/retrace)



Azaro Fundazioa © 2016 All rights reserved.

Our mailing address is:
projectretrace@gmail.com

Subscribe

Want to change how you receive these emails?
You can update your preferences or unsubscribe from this list

