



Gemeente
Amsterdam



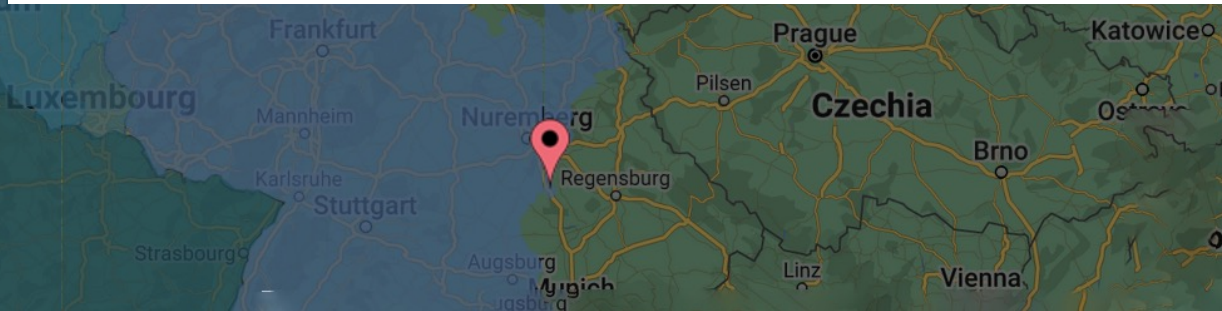
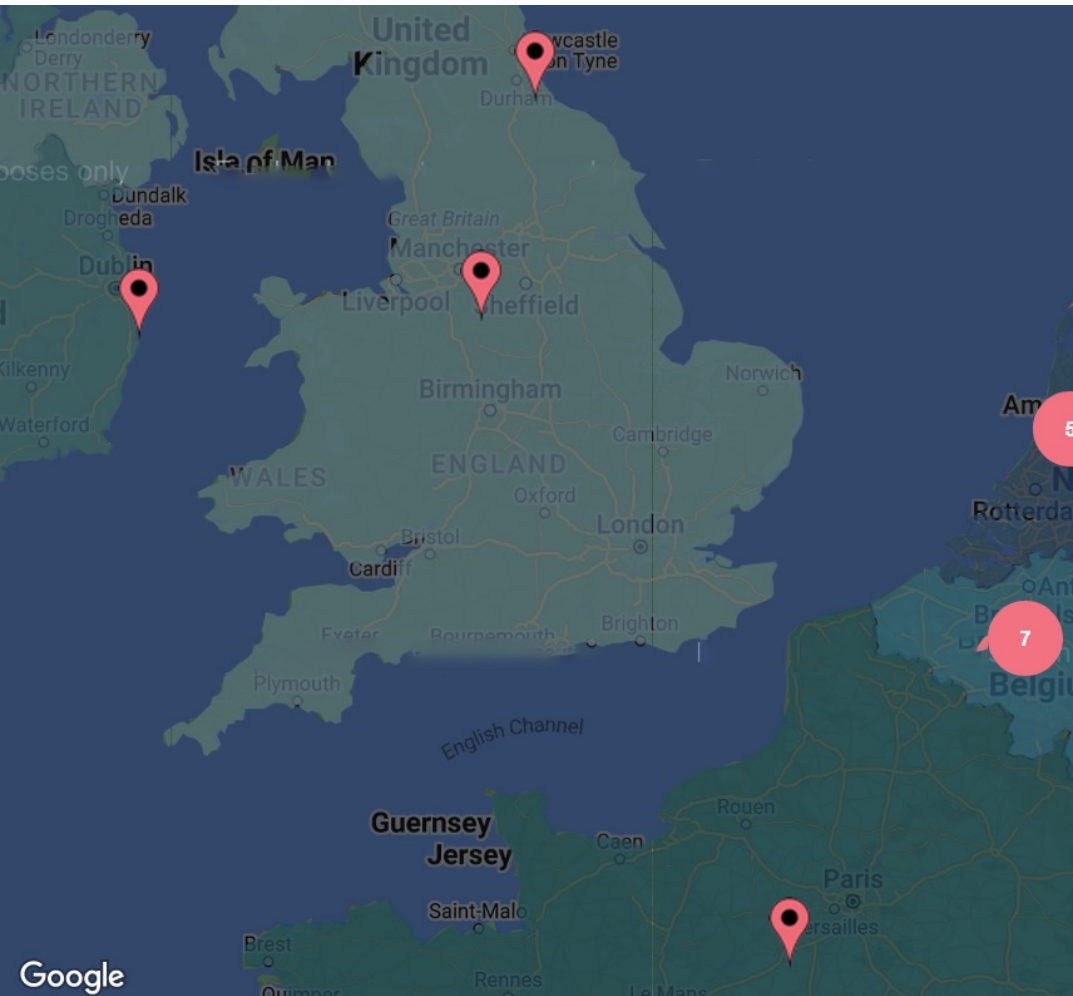
eHUBS: The alternative for car ownership?

Learned lessons for the eHUBS project

Diederik Basta, Project Manager eHUBS
City of Amsterdam



eHubs: 17 partners





Amsterdam faces major challenges

- Challenges surrounding climate are bigger than ever
- The current (mobility) system increases social inequality
- Amsterdam is growing faster than ever before

Car ownership from norm to exception





Are eHUBS the 'missing link' in this transition?

Research question Amsterdam eHUBS project

Hypothesis 1: clustering shared mobility in an eHUBS leads to more use and less car ownership

Hypothesis 2: allowing residents to participate in decisions about the location and layout of the eHUB leads to more support for the eHUB and less car ownership





Resultats eHUBS Amsterdam



Hypothesis 1: Clustering of shared mobility in an eHUBS leads to more use and less car ownership

- Not in places where freefloating shared mobility is offered
- Positive effect on the design of public space
- Car ownership does not decrease





Results eHUBS Amsterdam



Hypothesis 2: allowing residents to participate in decisions about the location and layout of the eHUB leads to more support for the eHUB and less car ownership

- There is more support, but people tend to only find the location of the eHUBS important
- Car ownership does not decrease



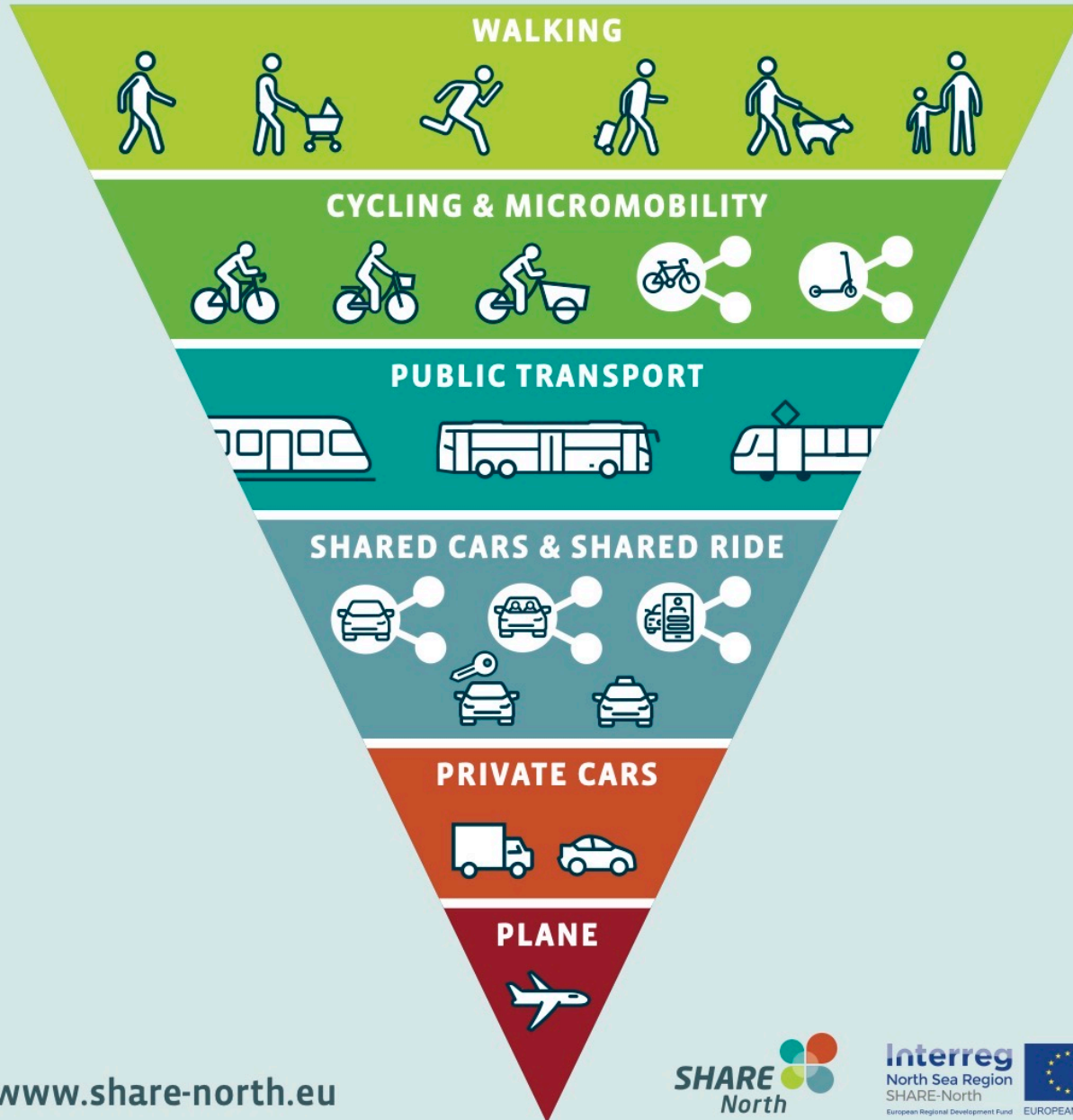
eHUBS: Not a worthy alternative for the private car

- The AUAS conducted research amongst 850 car owners





MOBILITY PYRAMID





So, what does work?

- Parking policy
- Zero emission policy
- Shared mobility and eHUBS as ~~worthy~~ alternative





Amsterdam in 10 years...

What would the city look like if hardly anyone had their own car and Amsterdammers would make use of shared mobility?





Gemeente
Amsterdam

Want to know more?

Check out the eHUBS project page at
www.nweurope.eu

Or contact me via
D.A.Basta@amsterdam.nl